

V&V Reference Report

L2 ASCDS Version : 8.4.3

Observation 55281 - L2 Version 2
Chandra X-Ray Center

L2 Processing Date : Feb 18 2012

Contents

1	Front	2
2	OBI	3
2.1	OBI	3
2.1.1	Images	3
2.1.2	Bias	3
2.1.3	Parameters	4
2.1.4	Events	4
2.2	Compared Parameters	5
2.3	Star Slots	6
2.4	FID Slots	6
A	Summary	7
A.1	Status	7
A.2	Comments	7

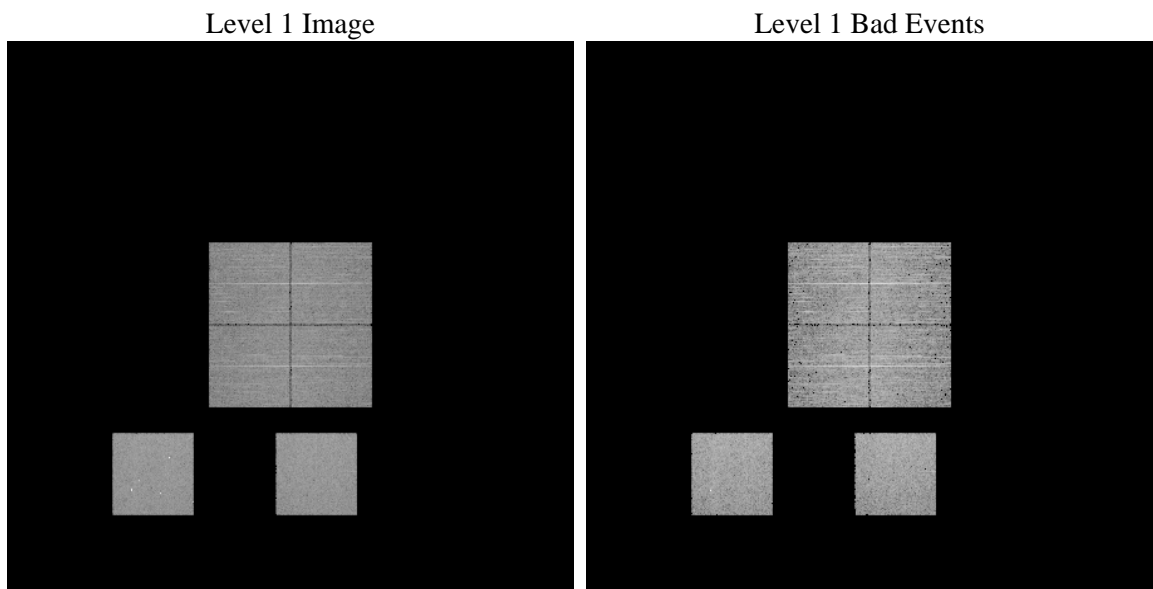
1 Front

seq_num	 	Sequence number
obs_id	55281	Observation id
title	ACIS-012357 diagnostics	Proposal title
observer	CHANDRA engineering request/realtime commanding	Principal investig
object	 	Source name
dtcycle	0	
cycle	P	events from which exps? Prim/Second/Both
ra_targ	0.0	Observer's specified target RA [deg]
dec_targ	0.0	Observer's specified target Dec [deg]
ra_nom	67.943799535148	Nominal RA [deg]
dec_nom	-60.99106530104	Nominal Dec [deg]
roll_nom	128.97023040311	Nominal Roll [deg]
revision	2	Processing version of data
ontime	5852.7999782562	Sum of GTIs [s]
livetime	5778.6883007985	Livetime [s]
ontime0	5852.7999782562	Sum of GTIs [s]
ontime1	5852.7999782562	Sum of GTIs [s]
ontime2	5852.7999782562	Sum of GTIs [s]
ontime3	5852.7999782562	Sum of GTIs [s]
ontime5	5852.7999782562	Sum of GTIs [s]
ontime7	5852.7999782562	Sum of GTIs [s]
l2events	236095	Number of level 2 events

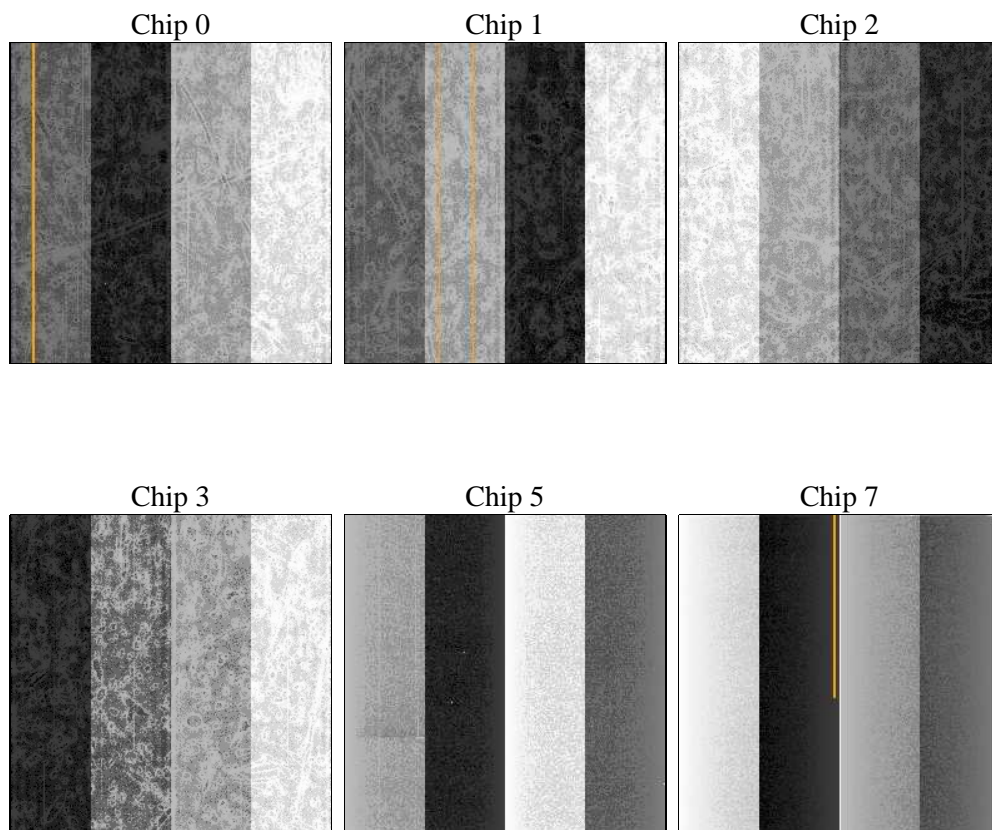
2 OBI

2.1 OBI

2.1.1 Images



2.1.2 Bias



2.1.3 Parameters

obi_num	0	Obi number	sched_exp_time	0.0	[s] Scheduled observation exposure time
ascdsver	8.4.3	Processing system revision	ontime	5852.7999782562	Sum of GTIs [s]
caldsver	4.4.8	 	ontime0	5852.7999782562	Sum of GTIs [s]
date	2012-02-18T18:31:37	Date and time of file creation	ontime1	5852.7999782562	Sum of GTIs [s]
revision	2	Processing version of data	ontime2	5852.7999782562	Sum of GTIs [s]
			ontime3	5852.7999782562	Sum of GTIs [s]
			ontime5	5852.7999782562	Sum of GTIs [s]
			ontime7	5852.7999782562	Sum of GTIs [s]
			l1events	480724	Number of level 1 events

2.1.4 Events

	ccd 0	ccd 1	ccd 2	ccd 3	ccd 5	ccd 7		ccd 0	ccd 1	ccd 2	ccd 3	ccd 5	ccd 7
level 1 events	70562	71788	71179	71670	99420	96105	grade 0 events	18084	17583	18583	18443	8341	9287
rejected events	36331	37529	36822	37436	41392	41431		25%	24%	26%	25%	8%	9%
rejected %	51%	52%	51%	52%	41%	43%	grade 1 events	85	91	113	118	129	87
								0%	0%	0%	0%	0%	0%
							grade 2 events	6403	6602	6004	6090	20442	11820
								9%	9%	8%	8%	20%	12%
							grade 3 events	2294	2276	2317	2398	2365	4884
								3%	3%	3%	3%	2%	5%
							grade 4 events	2260	2303	2342	2325	2283	4920
								3%	3%	3%	3%	2%	5%
							grade 5 events	2338	2511	2235	2588	5342	6410
								3%	3%	3%	3%	5%	6%
							grade 6 events	5239	5519	5124	5011	24624	23816
								7%	7%	7%	6%	24%	24%
							grade 7 events	33859	34903	34461	34697	35894	34881
								47%	48%	48%	48%	36%	36%

2.2 Compared Parameters

Parameter	Planned	Actual	Parameter	Planned	Actual
Instrument	ACIS	ACIS	Obspar format version number	7	7
Detector	ACIS-012357	ACIS-012357	Obspar file type	PREDICTED	ACTUAL
Grating	NONE	NONE	Obspar update status	NONE	UPDATED
Data mode	FAINT	FAINT	Number of optional ACIS chips dropped	0	0
Observation mode	SECONDARY	SECONDARY	On-chip summing requested	N	N
[deg] Pointing RA	0	67.94379953514765	Subarray requested	NONE	NONE
[deg] Pointing Dec	0	-60.99106530104004	Alternating exposures requested	N	N
[deg] Pointing Roll	0.0	128.970230403113	[s] Primary exposure time	3.2	3.2
[mm] SIM focus pos	-1.429586	-1.428180813131781			
[mm] SIM defocus	0.1037507710433287	0.1051558262725154			
[mm] SIM translation stage pos	250.455976	250.466033080201			
[mm] SIM translation stage offset	0	-0.01005468664627074			
[s] Observation start time (MET)	427951403.707569	427951402.68265			
Observation start date	2011-07-25T03:23:24	2011-07-25T03:23:22			
[s] Observation end time (MET)	427959152.707973	427959151.68306			
Observation end date	2011-07-25T05:32:33	2011-07-25T05:32:31			
Read mode	TIMED	TIMED			

2.3 Star Slots

2.4 FID Slots

A Summary

A.1 Status

V&V Scientist	Jen Lauer
V&V Date (YYYY-MM-DD)	2012.02.21
V&V Edition	1
V&V Disposition and Status	OK
V&V Charge Time	5.8527999782562

A.2 Comments