

V&V Reference Report

L2 ASCDS Version : 8.4.3

Observation 55254 - L2 Version 2
Chandra X-Ray Center

L2 Processing Date : Feb 19 2012

Contents

1	Front	2
2	OBI	3
2.1	OBI	3
2.1.1	Images	3
2.1.2	Bias	3
2.1.3	Parameters	4
2.1.4	Events	4
2.2	Compared Parameters	5
2.3	Star Slots	6
2.4	FID Slots	6
A	Summary	7
A.1	Status	7
A.2	Comments	7

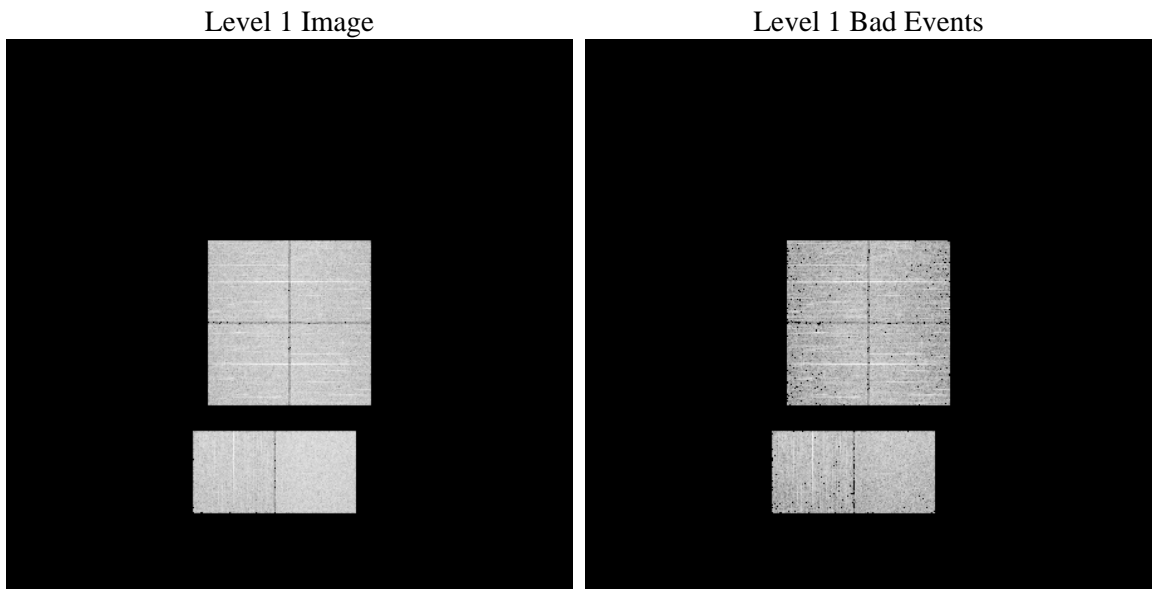
1 Front

seq_num	 	Sequence number
obs_id	55254	Observation id
title	ACIS-012367 diagnostics	Proposal title
observer	CHANDRA engineering request/realtime commanding	Principal investig
object	 	Source name
dtcycle	0	
cycle	P	events from which exps? Prim/Second/Both
ra_targ	0.0	Observer's specified target RA [deg]
dec_targ	0.0	Observer's specified target Dec [deg]
ra_nom	295.0295043763	Nominal RA [deg]
dec_nom	-30.01377825954	Nominal Dec [deg]
roll_nom	299.23637943306	Nominal Roll [deg]
revision	2	Processing version of data
ontime	4991.999981463	Sum of GTIs [s]
livetime	4928.7882718762	Livetime [s]
ontime0	4920.6971014738	Sum of GTIs [s]
ontime1	4927.1810492873	Sum of GTIs [s]
ontime2	4917.4560614824	Sum of GTIs [s]
ontime3	4914.2150214911	Sum of GTIs [s]
ontime6	4904.4937692285	Sum of GTIs [s]
ontime7	4991.999981463	Sum of GTIs [s]
l2events	174282	Number of level 2 events

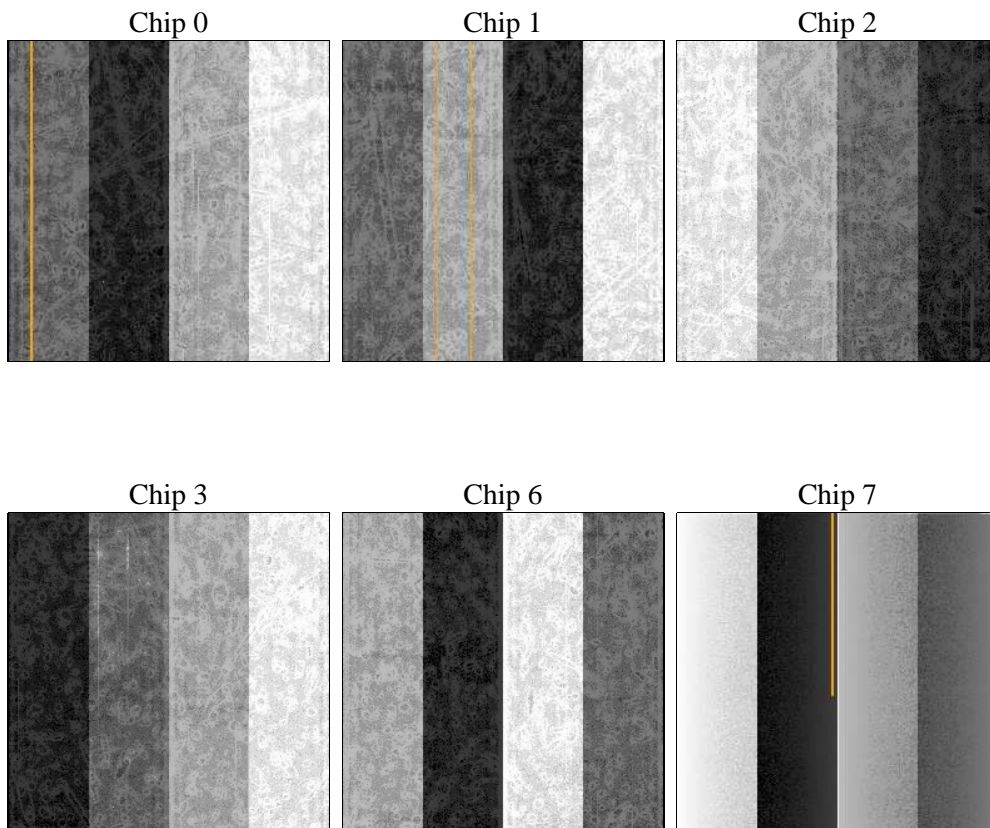
2 OBI

2.1 OBI

2.1.1 Images



2.1.2 Bias



2.1.3 Parameters

obi_num	1	Obi number	sched_exp_time	0.0	[s] Scheduled observation exposure time
ascdsver	8.4.3	Processing system revision	ontime	4991.999981463	Sum of GTIs [s]
caldsver	4.4.8	 	ontime0	4920.6971014738	Sum of GTIs [s]
date	2012-02-19T11:38:30	Date and time of file creation	ontime1	4927.1810492873	Sum of GTIs [s]
revision	2	Processing version of data	ontime2	4917.4560614824	Sum of GTIs [s]
			ontime3	4914.2150214911	Sum of GTIs [s]
			ontime6	4904.4937692285	Sum of GTIs [s]
			ontime7	4991.999981463	Sum of GTIs [s]
			l1events	385369	Number of level 1 events

2.1.4 Events

	ccd 0	ccd 1	ccd 2	ccd 3	ccd 6	ccd 7		ccd 0	ccd 1	ccd 2	ccd 3	ccd 6	ccd 7
level 1 events	60061	59268	59807	62136	63864	80233	grade 0 events	15640	15220	15846	15989	15615	7795
rejected events	32066	31221	32131	34093	35012	36431		26%	25%	26%	25%	24%	9%
rejected %	53%	52%	53%	54%	54%	45%	grade 1 events	92	69	83	105	70	72
								0%	0%	0%	0%	0%	0%
							grade 2 events	5429	5775	5010	5246	5714	10110
								9%	9%	8%	8%	8%	12%
							grade 3 events	1979	1939	2030	2090	2036	4032
								3%	3%	3%	3%	3%	5%
							grade 4 events	1925	1976	2059	2080	1913	4006
								3%	3%	3%	3%	2%	4%
							grade 5 events	1905	1972	1829	2052	2042	5186
								3%	3%	3%	3%	3%	6%
							grade 6 events	4567	4690	4352	4237	5212	20251
								7%	7%	7%	6%	8%	25%
							grade 7 events	28524	27627	28598	30337	31262	28781
								47%	46%	47%	48%	48%	35%

2.2 Compared Parameters

Parameter	Planned	Actual
Instrument	ACIS	ACIS
Detector	ACIS-012367	ACIS-012367
Grating	NONE	NONE
Data mode	FAINT	FAINT
Observation mode	SECONDARY	SECONDARY
[deg] Pointing RA	0	295.0295043763029
[deg] Pointing Dec	0	-30.01377825954005
[deg] Pointing Roll	0.0	299.2363794330562
[mm] SIM focus pos	-0.68282252473119	-0.68282252473119
[mm] SIM defocus	0.8505140384245534	0.8505140384245534
[mm] SIM translation stage pos	250.4660330802	250.4660330802
[mm] SIM translation stage offset	-0.01005726120527584	-0.01005726120527584
[s] Observation start time (MET)	429090521.117258	429090521.117258
Observation start date	2011-08-07T07:48:41	2011-08-07T07:48:41
[s] Observation end time (MET)	429098672.096465	429098672.096465
Observation end date	2011-08-07T10:04:32	2011-08-07T10:04:32
Read mode	TIMED	TIMED

Parameter	Planned	Actual
Obspar format version number	7	7
Obspar file type	PREDICTED	ACTUAL
Obspar update status	OVERRIDE	OVERRIDE
Number of optional ACIS chips dropped	0	0
On-chip summing requested	N	N
Subarray requested	NONE	NONE
Alternating exposures requested	N	N
[s] Primary exposure time	3.2	3.2

2.3 Star Slots

2.4 FID Slots

A Summary

A.1 Status

V&V Scientist	Jen Lauer
V&V Date (YYYY-MM-DD)	2012.02.21
V&V Edition	1
V&V Disposition and Status	OK
V&V Charge Time	4.991999981463

A.2 Comments