

V&V Reference Report

L2 ASCDS Version : 8.4.3

Observation 55223 - L2 Version 2
Chandra X-Ray Center

L2 Processing Date : Feb 20 2012

Contents

1	Front	2
2	OBI	3
2.1	OBI	3
2.1.1	Images	3
2.1.2	Bias	3
2.1.3	Parameters	4
2.1.4	Events	4
2.2	Compared Parameters	5
2.3	Star Slots	6
2.4	FID Slots	6
A	Summary	7
A.1	Status	7
A.2	Comments	7

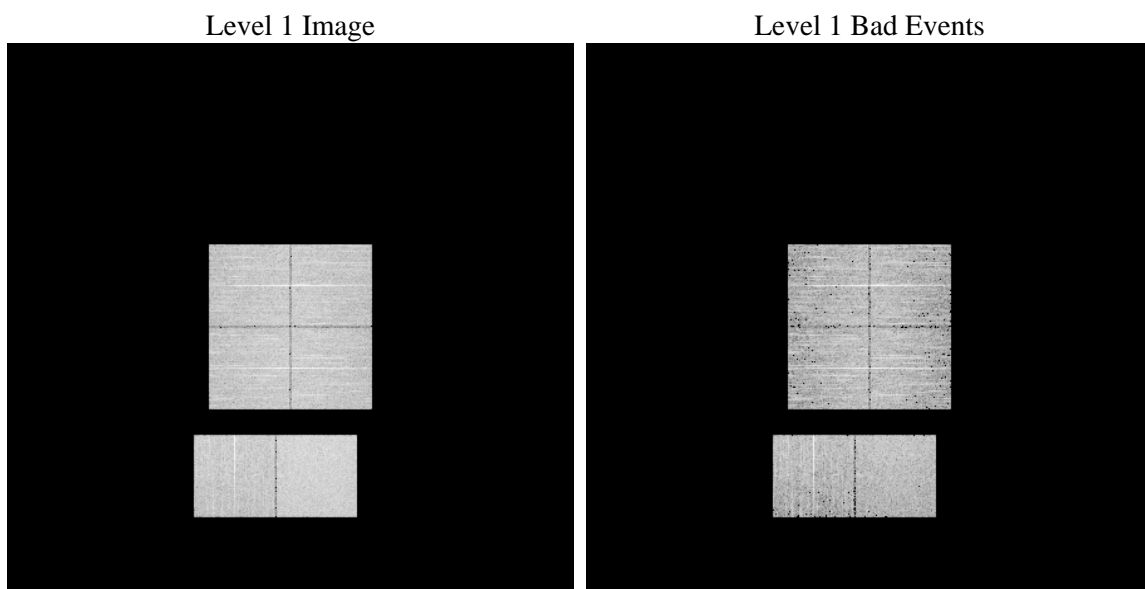
1 Front

seq_num	 	Sequence number
obs_id	55223	Observation id
title	ACIS-012367 diagnostics	Proposal title
observer	CHANDRA engineering request/realtime commanding	Principal investig
object	 	Source name
dtcycle	0	
cycle	P	events from which exps? Prim/Second/Both
ra_targ	0.0	Observer's specified target RA [deg]
dec_targ	0.0	Observer's specified target Dec [deg]
ra_nom	344.46594187705	Nominal RA [deg]
dec_nom	15.487085292837	Nominal Dec [deg]
roll_nom	154.33377635033	Nominal Roll [deg]
revision	2	Processing version of data
ontime	5292.5977376699	Sum of GTIs [s]
livetime	5225.5796782958	Livetime [s]
ontime0	5292.5884802938	Sum of GTIs [s]
ontime1	5292.5474402905	Sum of GTIs [s]
ontime2	5292.5064002872	Sum of GTIs [s]
ontime3	5292.5977376699	Sum of GTIs [s]
ontime6	5289.2243400812	Sum of GTIs [s]
ontime7	5292.5977376699	Sum of GTIs [s]
l2events	185663	Number of level 2 events

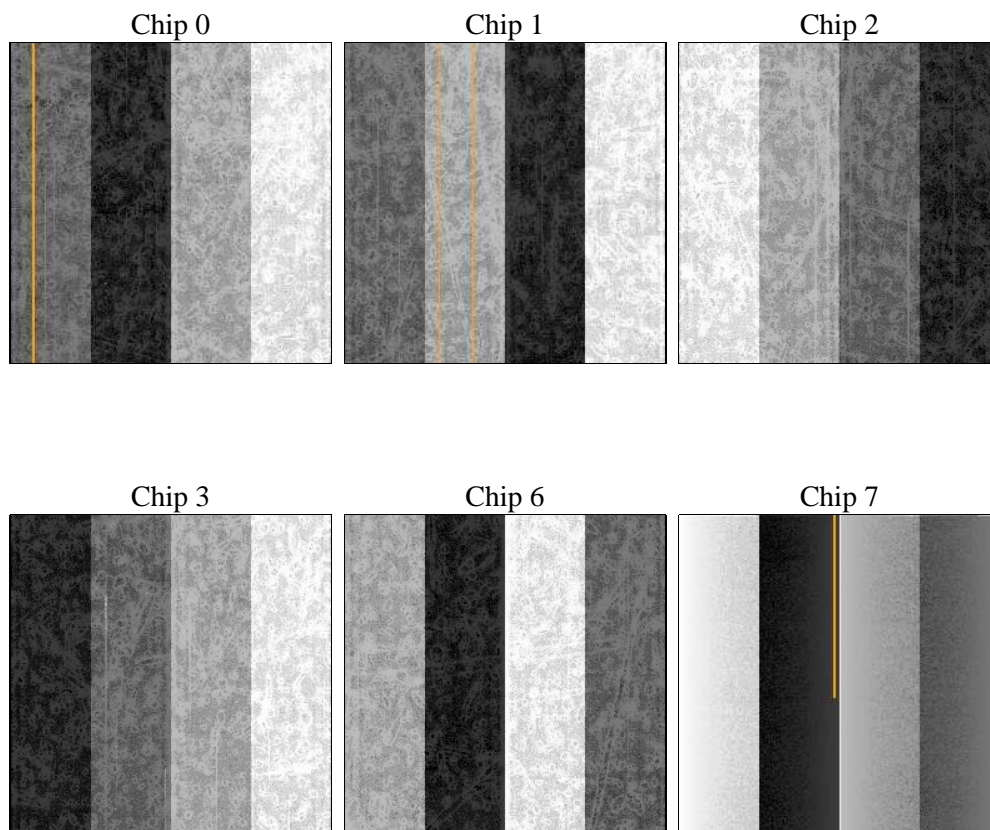
2 OBI

2.1 OBI

2.1.1 Images



2.1.2 Bias



2.1.3 Parameters

obi_num	0	Obi number	sched_exp_time	0.0	[s] Scheduled observation exposure time
ascdsver	8.4.3	Processing system revision	ontime	5292.5977376699	Sum of GTIs [s]
caldsver	4.4.8	 	ontime0	5292.5884802938	Sum of GTIs [s]
date	2012-02-20T23:48:58	Date and time of file creation	ontime1	5292.5474402905	Sum of GTIs [s]
revision	2	Processing version of data	ontime2	5292.5064002872	Sum of GTIs [s]
			ontime3	5292.5977376699	Sum of GTIs [s]
			ontime6	5289.2243400812	Sum of GTIs [s]
			ontime7	5292.5977376699	Sum of GTIs [s]
			l1events	417718	Number of level 1 events

2.1.4 Events

	ccd 0	ccd 1	ccd 2	ccd 3	ccd 6	ccd 7		ccd 0	ccd 1	ccd 2	ccd 3	ccd 6	ccd 7
level 1 events	64665	66036	66749	67269	66832	86167	grade 0 events	15075	14240	15743	16109	14129	7378
rejected events	35252	36307	37509	37547	36597	38109		23%	21%	23%	23%	21%	8%
rejected %	54%	54%	56%	55%	54%	44%	grade 1 events	96	74	90	87	78	63
								0%	0%	0%	0%	0%	0%
							grade 2 events	5717	6781	5118	5113	6877	10884
								8%	10%	7%	7%	10%	12%
							grade 3 events	1909	1841	2040	2102	1788	3914
								2%	2%	3%	3%	2%	4%
							grade 4 events	1880	1823	1969	1947	1814	3788
								2%	2%	2%	2%	2%	4%
							grade 5 events	2022	2085	1988	2127	2025	5413
								3%	3%	2%	3%	3%	6%
							grade 6 events	4832	5044	4370	4451	5627	22094
								7%	7%	6%	6%	8%	25%
							grade 7 events	33134	34148	35431	35333	34494	32633
								51%	51%	53%	52%	51%	37%

2.2 Compared Parameters

Parameter	Planned	Actual	Parameter	Planned	Actual
Instrument	ACIS	ACIS	Obspar format version number	7	7
Detector	ACIS-012367	ACIS-012367	Obspar file type	PREDICTED	ACTUAL
Grating	NONE	NONE	Obspar update status	NONE	UPDATED
Data mode	FAINT	FAINT	Number of optional ACIS chips dropped	0	0
Observation mode	SECONDARY	SECONDARY	On-chip summing requested	N	N
[deg] Pointing RA	0	344.4659418770521	Subarray requested	NONE	NONE
[deg] Pointing Dec	0	15.48708529283703	Alternating exposures requested	N	N
[deg] Pointing Roll	0.0	154.3337763503342	[s] Primary exposure time	3.2	3.2
[mm] SIM focus pos	-1.429586	-1.428180813131781			
[mm] SIM defocus	0.1037507710433287	0.1051558262725154			
[mm] SIM translation stage pos	250.455976	250.466033080201			
[mm] SIM translation stage offset	0	-0.01005468664627074			
[s] Observation start time (MET)	430460333.239102	430460332.21405			
Observation start date	2011-08-23T04:18:53	2011-08-23T04:18:52			
[s] Observation end time (MET)	430470800.539651	430470799.5146			
Observation end date	2011-08-23T07:13:21	2011-08-23T07:13:19			
Read mode	TIMED	TIMED			

2.3 Star Slots

2.4 FID Slots

A Summary

A.1 Status

V&V Scientist	Beth Sundheim
V&V Date (YYYY-MM-DD)	2012.02.22
V&V Edition	1
V&V Disposition and Status	OK
V&V Charge Time	5.2925977376699

A.2 Comments