

V&V Reference Report

L2 ASCDS Version : 8.4.3

Observation 55215 - L2 Version 2
Chandra X-Ray Center

L2 Processing Date : Feb 20 2012

Contents

1	Front	2
2	OBI	3
2.1	OBI	3
2.1.1	Images	3
2.1.2	Bias	3
2.1.3	Parameters	4
2.1.4	Events	4
2.2	Compared Parameters	5
2.3	Star Slots	6
2.4	FID Slots	6
A	Summary	7
A.1	Status	7
A.2	Comments	7

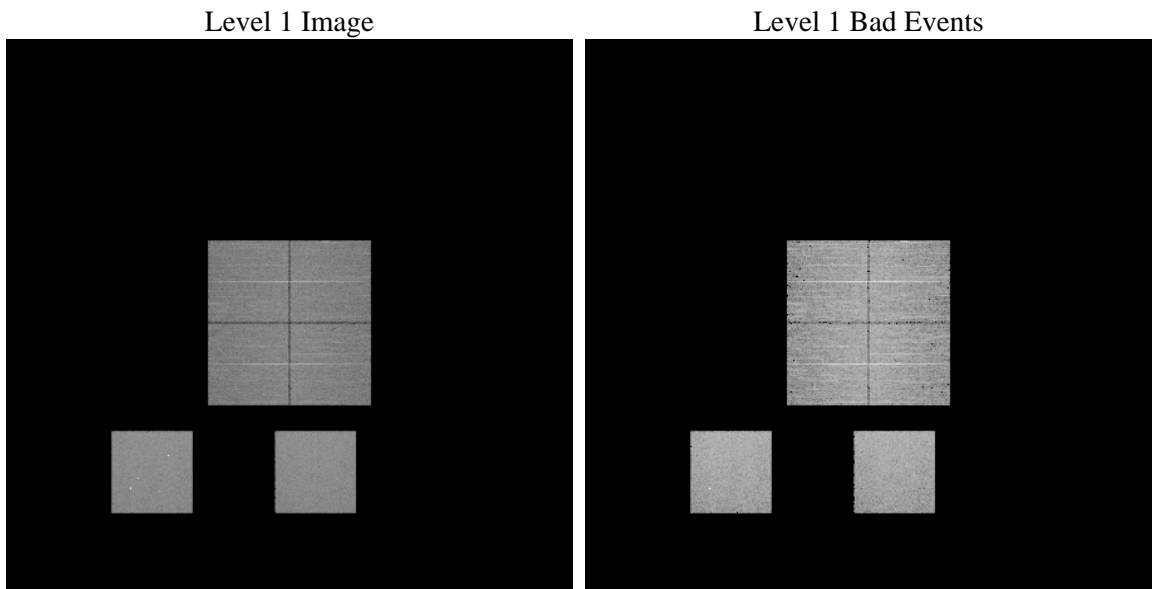
1 Front

seq_num	 	Sequence number
obs_id	55215	Observation id
title	ACIS-012357 diagnostics	Proposal title
observer	CHANDRA engineering request/realtime commanding	Principal investig
object	 	Source name
dtcycle	0	
cycle	P	events from which exps? Prim/Second/Both
ra_targ	0.0	Observer's specified target RA [deg]
dec_targ	0.0	Observer's specified target Dec [deg]
ra_nom	212.00846882184	Nominal RA [deg]
dec_nom	-7.0275237827584	Nominal Dec [deg]
roll_nom	254.12919251508	Nominal Roll [deg]
revision	2	Processing version of data
ontime	8287.9999691844	Sum of GTIs [s]
livetime	8183.0523231401	Livetime [s]
ontime0	8287.9999691844	Sum of GTIs [s]
ontime1	8287.9999691844	Sum of GTIs [s]
ontime2	8287.9999691844	Sum of GTIs [s]
ontime3	8287.9999691844	Sum of GTIs [s]
ontime5	8287.9999691844	Sum of GTIs [s]
ontime7	8287.9999691844	Sum of GTIs [s]
l2events	330475	Number of level 2 events

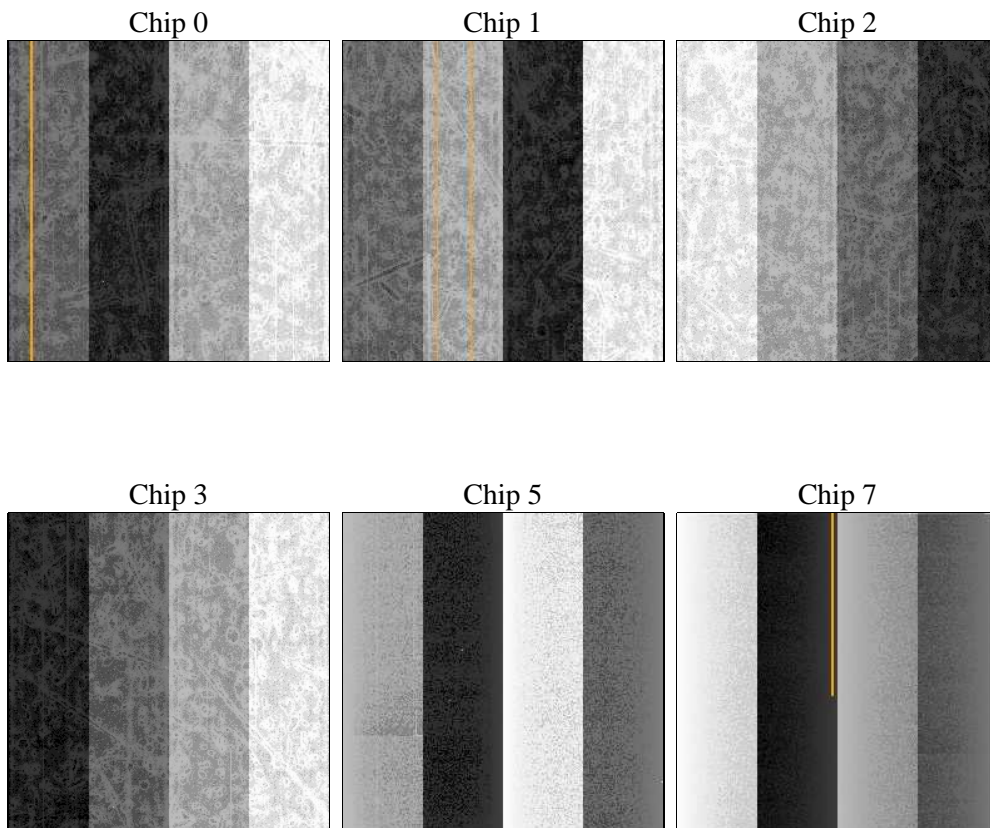
2 OBI

2.1 OBI

2.1.1 Images



2.1.2 Bias



2.1.3 Parameters

obi_num	0	Obi number	sched_exp_time	0.0	[s] Scheduled observation exposure time
ascdsver	8.4.3	Processing system revision	ontime	8287.9999691844	Sum of GTIs [s]
caldsver	4.4.8	 	ontime0	8287.9999691844	Sum of GTIs [s]
date	2012-02-21T02:32:43	Date and time of file creation	ontime1	8287.9999691844	Sum of GTIs [s]
revision	2	Processing version of data	ontime2	8287.9999691844	Sum of GTIs [s]
			ontime3	8287.9999691844	Sum of GTIs [s]
			ontime5	8287.9999691844	Sum of GTIs [s]
			ontime7	8287.9999691844	Sum of GTIs [s]
			l1events	681797	Number of level 1 events

2.1.4 Events

	ccd 0	ccd 1	ccd 2	ccd 3	ccd 5	ccd 7		ccd 0	ccd 1	ccd 2	ccd 3	ccd 5	ccd 7
level 1 events	99377	100680	98791	102759	144324	135866	grade 0 events	24865	24345	25133	25444	14153	13005
rejected events	51838	53007	51987	55045	60159	58464		25%	24%	25%	24%	9%	9%
rejected %	52%	52%	52%	53%	41%	43%	grade 1 events	136	150	161	172	487	117
								0%	0%	0%	0%	0%	0%
							grade 2 events	8879	9313	8106	8535	28427	16875
								8%	9%	8%	8%	19%	12%
							grade 3 events	3330	3150	3246	3266	3521	6803
								3%	3%	3%	3%	2%	5%
							grade 4 events	3083	3214	3263	3377	3320	6945
								3%	3%	3%	3%	2%	5%
							grade 5 events	3447	3460	3239	3695	7680	9218
								3%	3%	3%	3%	5%	6%
							grade 6 events	7382	7651	7056	7092	34775	33774
								7%	7%	7%	6%	24%	24%
							grade 7 events	48255	49397	48587	51178	51961	49129
								48%	49%	49%	49%	36%	36%

2.2 Compared Parameters

Parameter	Planned	Actual	Parameter	Planned	Actual
Instrument	ACIS	ACIS	Obspar format version number	7	7
Detector	ACIS-012357	ACIS-012357	Obspar file type	PREDICTED	ACTUAL
Grating	NONE	NONE	Obspar update status	NONE	UPDATED
Data mode	FAINT	FAINT	Number of optional ACIS chips dropped	0	0
Observation mode	SECONDARY	SECONDARY	On-chip summing requested	N	N
[deg] Pointing RA	0	212.0084688218393	Subarray requested	NONE	NONE
[deg] Pointing Dec	0	-7.027523782758387	Alternating exposures requested	N	N
[deg] Pointing Roll	0.0	254.1291925150766	[s] Primary exposure time	3.2	3.2
[mm] SIM focus pos	-1.429586	-1.428180813131781			
[mm] SIM defocus	0.1037507710433287	0.1051558262725154			
[mm] SIM translation stage pos	250.455976	250.466033080201			
[mm] SIM translation stage offset	0	-0.01005468664627074			
[s] Observation start time (MET)	431115662.923389	431115661.89842			
Observation start date	2011-08-30T18:21:03	2011-08-30T18:21:01			
[s] Observation end time (MET)	431137558.97457	431137557.94957			
Observation end date	2011-08-31T00:25:59	2011-08-31T00:25:57			
Read mode	TIMED	TIMED			

2.3 Star Slots

2.4 FID Slots

A Summary

A.1 Status

V&V Scientist	Beth Sundheim
V&V Date (YYYY-MM-DD)	2012.02.22
V&V Edition	1
V&V Disposition and Status	OK
V&V Charge Time	8.2879999691844

A.2 Comments