

V&V Reference Report

L2 ASCDS Version : 8.4.3

Observation 55196 - L2 Version 2
Chandra X-Ray Center

L2 Processing Date : Feb 22 2012

Contents

1	Front	2
2	OBI	3
2.1	OBI	3
2.1.1	Images	3
2.1.2	Bias	3
2.1.3	Parameters	4
2.1.4	Events	4
2.2	Compared Parameters	5
2.3	Star Slots	6
2.4	FID Slots	6
A	Summary	7
A.1	Status	7
A.2	Comments	7

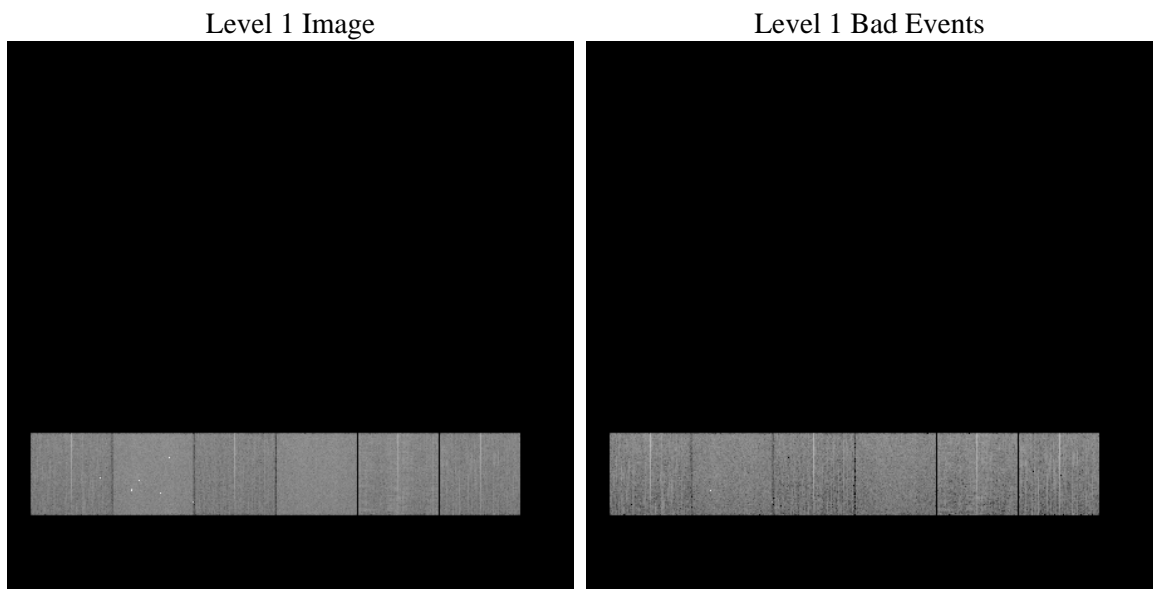
1 Front

seq_num	 	Sequence number
obs_id	55196	Observation id
title	ACIS-456789 diagnostics	Proposal title
observer	CHANDRA engineering request/realtime commanding	Principal investig
object	 	Source name
dtcycle	0	
cycle	P	events from which exps? Prim/Second/Both
ra_targ	0.0	Observer's specified target RA [deg]
dec_targ	0.0	Observer's specified target Dec [deg]
ra_nom	322.02591931662	Nominal RA [deg]
dec_nom	-19.015137360612	Nominal Dec [deg]
roll_nom	295.38481131957	Nominal Roll [deg]
revision	2	Processing version of data
ontime	8283.4784243107	Sum of GTIs [s]
livetime	8178.5880327902	Livetime [s]
ontime4	8283.3553043008	Sum of GTIs [s]
ontime5	8283.4373843074	Sum of GTIs [s]
ontime6	8283.3963443041	Sum of GTIs [s]
ontime7	8283.4784243107	Sum of GTIs [s]
ontime8	8283.3142642975	Sum of GTIs [s]
ontime9	8283.519464314	Sum of GTIs [s]
l2events	319727	Number of level 2 events

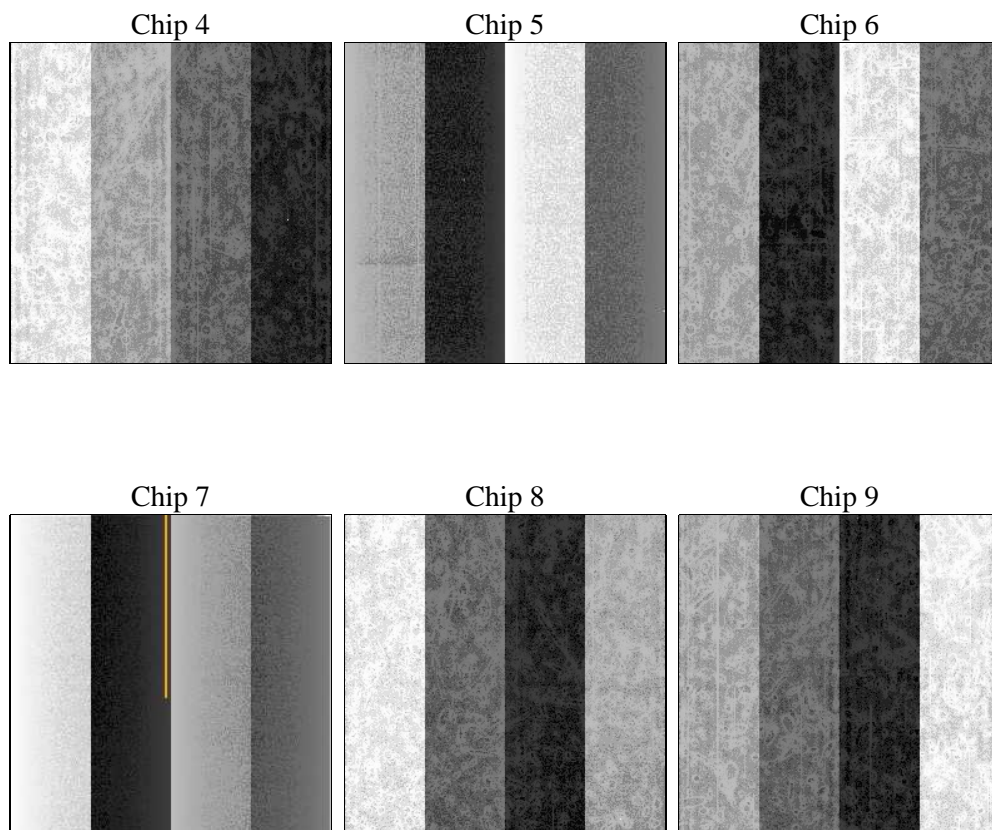
2 OBI

2.1 OBI

2.1.1 Images



2.1.2 Bias



2.1.3 Parameters

obi_num	0	Obi number	sched_exp_time	0.0	[s] Scheduled observation exposure time
ascdsver	8.4.3	Processing system revision	ontime	8283.4784243107	Sum of GTIs [s]
caldsver	4.4.8	 	ontime4	8283.3553043008	Sum of GTIs [s]
date	2012-02-22T09:53:37	Date and time of file creation	ontime5	8283.4373843074	Sum of GTIs [s]
revision	2	Processing version of data	ontime6	8283.3963443041	Sum of GTIs [s]
			ontime7	8283.4784243107	Sum of GTIs [s]
			ontime8	8283.3142642975	Sum of GTIs [s]
			ontime9	8283.519464314	Sum of GTIs [s]
			l1events	711014	Number of level 1 events

2.1.4 Events

	ccd 4	ccd 5	ccd 6	ccd 7	ccd 8	ccd 9		ccd 4	ccd 5	ccd 6	ccd 7	ccd 8	ccd 9
level 1 events	105812	143061	102235	131396	121645	106865	grade 0 events	27149	14888	24532	12396	28075	24753
rejected events	59036	60476	54407	57467	63037	59577		25%	10%	23%	9%	23%	23%
rejected %	55%	42%	53%	43%	51%	55%	grade 1 events	235	281	140	107	153	137
								0%	0%	0%	0%	0%	0%
							grade 2 events	7186	28087	8888	16130	11271	8384
								6%	19%	8%	12%	9%	7%
							grade 3 events	3237	2937	3138	6562	4545	3241
								3%	2%	3%	4%	3%	3%
							grade 4 events	3243	2871	3158	6405	4232	3235
								3%	2%	3%	4%	3%	3%
							grade 5 events	3463	7224	3604	8635	4644	3976
								3%	5%	3%	6%	3%	3%
							grade 6 events	5961	33802	8112	32436	10485	7675
								5%	23%	7%	24%	8%	7%
							grade 7 events	55338	52971	50663	48725	58240	55464
								52%	37%	49%	37%	47%	51%

2.2 Compared Parameters

Parameter	Planned	Actual	Parameter	Planned	Actual
Instrument	ACIS	ACIS	Obspar format version number	7	7
Detector	ACIS-456789	ACIS-456789	Obspar file type	PREDICTED	ACTUAL
Grating	NONE	NONE	Obspar update status	NONE	UPDATED
Data mode	FAINT	FAINT	Number of optional ACIS chips dropped	0	0
Observation mode	SECONDARY	SECONDARY	On-chip summing requested	N	N
[deg] Pointing RA	0	322.0259193166206	Subarray requested	NONE	NONE
[deg] Pointing Dec	0	-19.01513736061187	Alternating exposures requested	N	N
[deg] Pointing Roll	0.0	295.3848113195704	[s] Primary exposure time	3.2	3.2
[mm] SIM focus pos	-1.429586	-1.428180813131781			
[mm] SIM defocus	0.1037507710433287	0.1051558262725154			
[mm] SIM translation stage pos	250.455976	250.466033080201			
[mm] SIM translation stage offset	0	-0.01005468664627074			
[s] Observation start time (MET)	432029768.221373	432029767.19637			
Observation start date	2011-09-10T08:16:08	2011-09-10T08:16:07			
[s] Observation end time (MET)	432039667.671893	432039666.64689			
Observation end date	2011-09-10T11:01:08	2011-09-10T11:01:06			
Read mode	TIMED	TIMED			

2.3 Star Slots

2.4 FID Slots

A Summary

A.1 Status

V&V Scientist	Jen Lauer
V&V Date (YYYY-MM-DD)	2012.02.22
V&V Edition	1
V&V Disposition and Status	OK
V&V Charge Time	8.2834784243107

A.2 Comments