

# V&V Reference Report

## L2 ASCDS Version : 8.4.3

Observation 55184 - L2 Version 2  
Chandra X-Ray Center

L2 Processing Date : Feb 23 2012

## Contents

<b>1</b>	<b>Front</b>	<b>2</b>
<b>2</b>	<b>OBI</b>	<b>3</b>
2.1	OBI . . . . .	3
2.1.1	Images . . . . .	3
2.1.2	Bias . . . . .	3
2.1.3	Parameters . . . . .	4
2.1.4	Events . . . . .	4
2.2	Compared Parameters . . . . .	5
2.3	Star Slots . . . . .	6
2.4	FID Slots . . . . .	6
<b>A</b>	<b>Summary</b>	<b>7</b>
A.1	Status . . . . .	7
A.2	Comments . . . . .	7

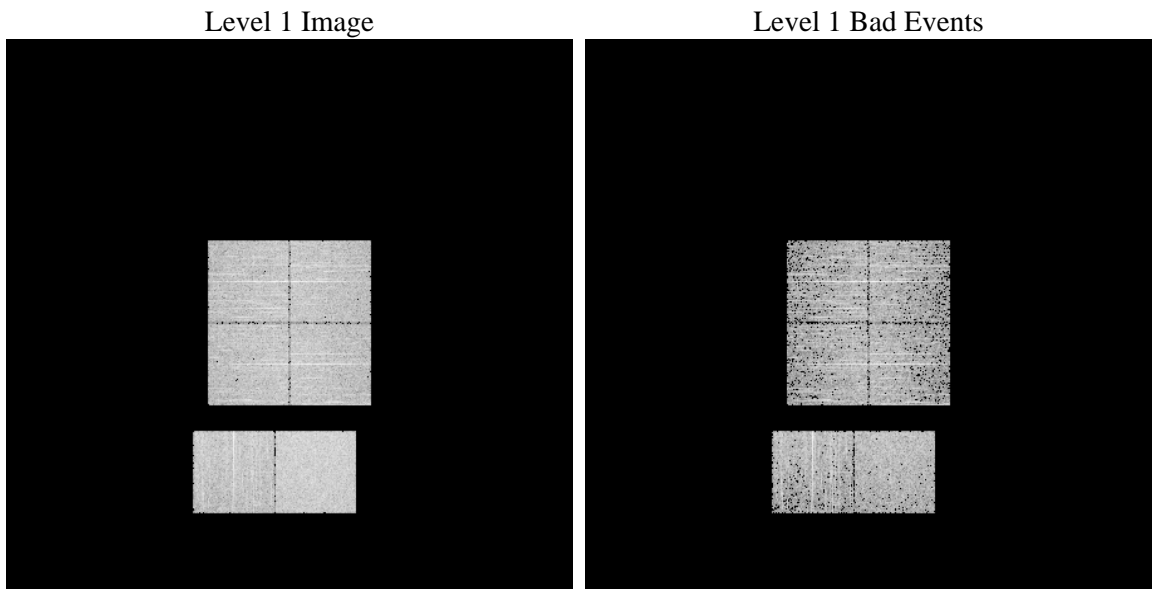
# 1 Front

seq_num	&#160	Sequence number
obs_id	55184	Observation id
title	ACIS-012367 diagnostics	Proposal title
observer	CHANDRA engineering request/realtime commanding	Principal investig
object	&#160	Source name
dtcycle	0	&#160
cycle	P	events from which exps? Prim/Second/Both
ra_targ	0.0	Observer's specified target RA [deg]
dec_targ	0.0	Observer's specified target Dec [deg]
ra_nom	351.97453052358	Nominal RA [deg]
dec_nom	22.983510864068	Nominal Dec [deg]
roll_nom	182.46130830956	Nominal Roll [deg]
revision	2	Processing version of data
ontime	3289.548032105	Sum of GTIs [s]
livetime	3247.8937941944	Livetime [s]
ontime0	3289.5890721679	Sum of GTIs [s]
ontime1	3292.799987793	Sum of GTIs [s]
ontime2	3292.7702882886	Sum of GTIs [s]
ontime3	3289.5069921613	Sum of GTIs [s]
ontime6	3292.7292482853	Sum of GTIs [s]
ontime7	3289.548032105	Sum of GTIs [s]
l2events	115691	Number of level 2 events

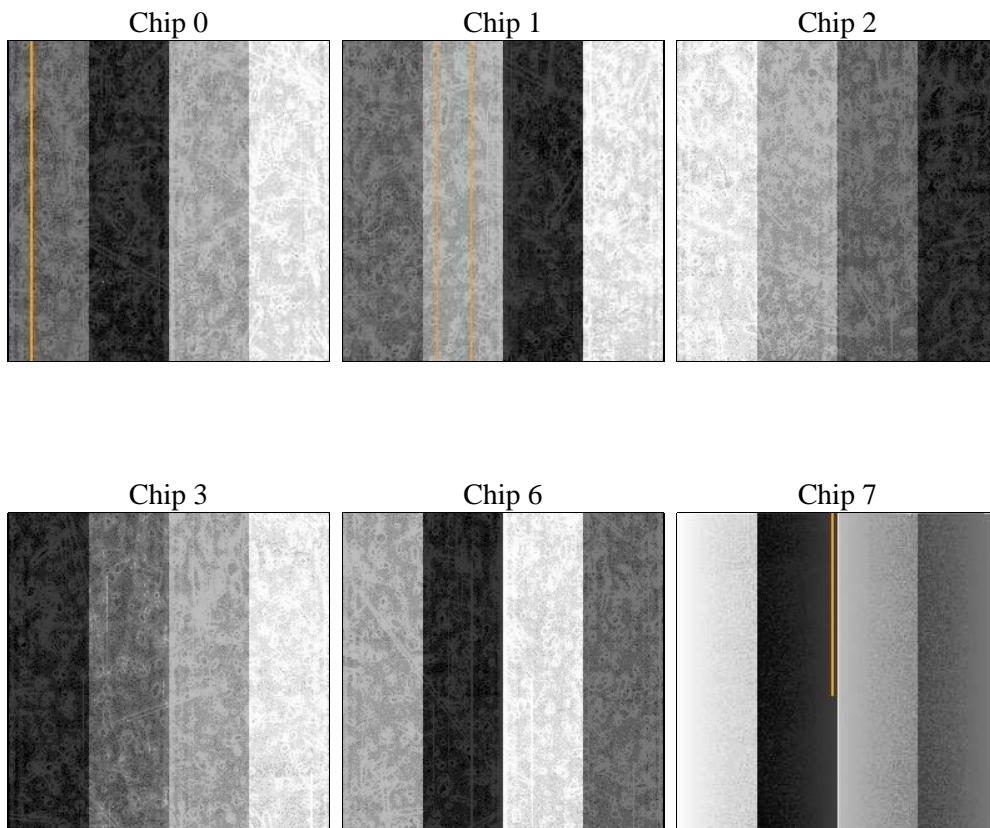
## 2 OBI

### 2.1 OBI

#### 2.1.1 Images



#### 2.1.2 Bias



### 2.1.3 Parameters

obi_num	0	Obi number	sched_exp_time	0.0	[s] Scheduled observation exposure time
ascdsver	8.4.3	Processing system revision	ontime	3289.548032105	Sum of GTIs [s]
caldsver	4.4.8	&#160	ontime0	3289.5890721679	Sum of GTIs [s]
date	2012-02-23T04:44:32	Date and time of file creation	ontime1	3292.799987793	Sum of GTIs [s]
revision	2	Processing version of data	ontime2	3292.7702882886	Sum of GTIs [s]
			ontime3	3289.5069921613	Sum of GTIs [s]
			ontime6	3292.7292482853	Sum of GTIs [s]
			ontime7	3289.548032105	Sum of GTIs [s]
			l1events	245631	Number of level 1 events

### 2.1.4 Events

	ccd 0	ccd 1	ccd 2	ccd 3	ccd 6	ccd 7		ccd 0	ccd 1	ccd 2	ccd 3	ccd 6	ccd 7
level 1 events	38387	37544	38083	38591	41044	51982	grade 0 events	9606	9507	9801	9810	9931	4986
rejected events	19981	18987	19827	20102	21843	22372		25%	25%	25%	25%	24%	9%
rejected %	52%	50%	52%	52%	53%	43%	grade 1 events	51	37	64	74	56	56
								0%	0%	0%	0%	0%	0%
							grade 2 events	3421	3658	3271	3380	3516	6438
								8%	9%	8%	8%	8%	12%
							grade 3 events	1267	1247	1242	1258	1311	2579
								3%	3%	3%	3%	3%	4%
							grade 4 events	1251	1221	1259	1327	1205	2596
								3%	3%	3%	3%	2%	4%
							grade 5 events	1245	1363	1225	1433	1459	3542
								3%	3%	3%	3%	3%	6%
							grade 6 events	2861	2924	2683	2714	3238	13011
								7%	7%	7%	7%	7%	25%
							grade 7 events	18685	17587	18538	18595	20328	18774
								48%	46%	48%	48%	49%	36%

## 2.2 Compared Parameters

Parameter	Planned	Actual	Parameter	Planned	Actual
Instrument	ACIS	ACIS	Obspar format version number	7	7
Detector	ACIS-012367	ACIS-012367	Obspar file type	PREDICTED	ACTUAL
Grating	NONE	NONE	Obspar update status	NONE	UPDATED
Data mode	FAINT	FAINT	Number of optional ACIS chips dropped	0	0
Observation mode	SECONDARY	SECONDARY	On-chip summing requested	N	N
[deg] Pointing RA	0	351.9745305235838	Subarray requested	NONE	NONE
[deg] Pointing Dec	0	22.98351086406794	Alternating exposures requested	N	N
[deg] Pointing Roll	0.0	182.4613083095574	[s] Primary exposure time	3.2	3.2
[mm] SIM focus pos	-1.429586	-1.428180813131781			
[mm] SIM defocus	0.1037507710433287	0.1051558262725154			
[mm] SIM translation stage pos	250.455976	250.466033080201			
[mm] SIM translation stage offset	0	-0.01005468664627074			
[s] Observation start time (MET)	432521046.647133	432521045.62213			
Observation start date	2011-09-16T00:44:07	2011-09-16T00:44:05			
[s] Observation end time (MET)	432526226.997404	432526225.97241			
Observation end date	2011-09-16T02:10:27	2011-09-16T02:10:25			
Read mode	TIMED	TIMED			

## **2.3 Star Slots**

## **2.4 FID Slots**

## A Summary

### A.1 Status

V&V Scientist	Beth Sundheim
V&V Date (YYYY-MM-DD)	2012.02.24
V&V Edition	1
V&V Disposition and Status	OK
V&V Charge Time	3.289548032105

### A.2 Comments