

# V&V Reference Report

## L2 ASCDS Version : 8.4.3

Observation 55111 - L2 Version 2  
Chandra X-Ray Center

L2 Processing Date : Feb 25 2012

## Contents

<b>1</b>	<b>Front</b>	<b>2</b>
<b>2</b>	<b>OBI</b>	<b>3</b>
2.1	OBI . . . . .	3
2.1.1	Images . . . . .	3
2.1.2	Bias . . . . .	3
2.1.3	Parameters . . . . .	4
2.1.4	Events . . . . .	4
2.2	Compared Parameters . . . . .	5
2.3	Star Slots . . . . .	6
2.4	FID Slots . . . . .	6
<b>A</b>	<b>Summary</b>	<b>7</b>
A.1	Status . . . . .	7
A.2	Comments . . . . .	7

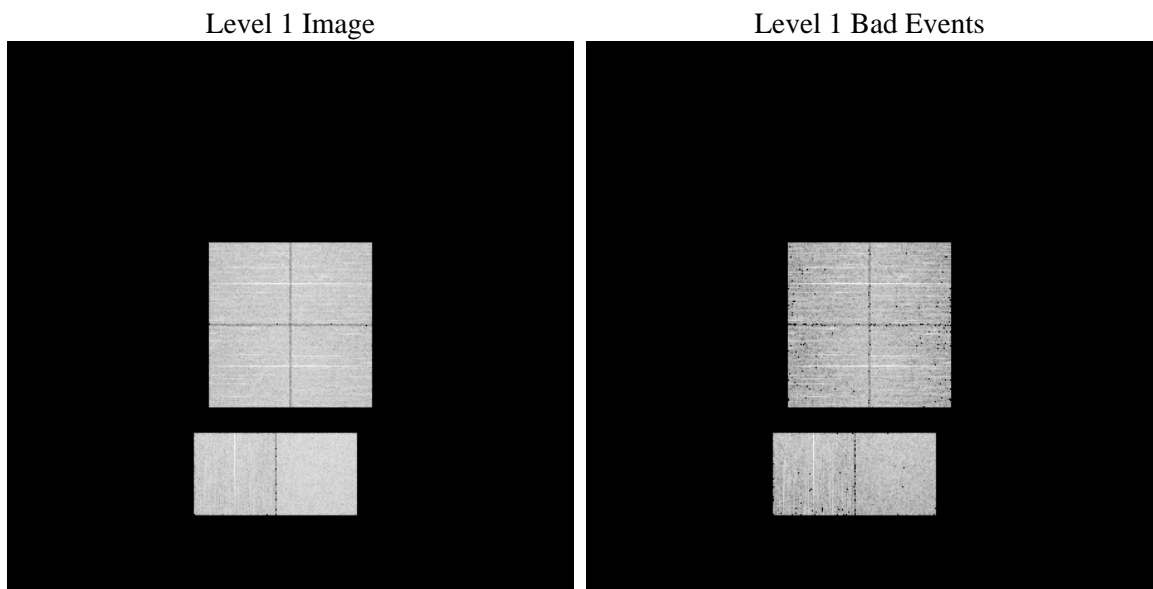
# 1 Front

seq_num	&#160	Sequence number
obs_id	55111	Observation id
title	ACIS-012367 diagnostics	Proposal title
observer	CHANDRA engineering request/realtime commanding	Principal investig
object	&#160	Source name
dtcycle	0	&#160
cycle	P	events from which exps? Prim/Second/Both
ra_targ	0.0	Observer's specified target RA [deg]
dec_targ	0.0	Observer's specified target Dec [deg]
ra_nom	52.969518656459	Nominal RA [deg]
dec_nom	17.018327652371	Nominal Dec [deg]
roll_nom	100.55759106199	Nominal Roll [deg]
revision	2	Processing version of data
ontime	6070.3999774456	Sum of GTIs [s]
livetime	5993.5329177751	Livetime [s]
ontime0	6070.3632502556	Sum of GTIs [s]
ontime1	6070.3222102523	Sum of GTIs [s]
ontime2	6070.281170249	Sum of GTIs [s]
ontime3	6070.3859565258	Sum of GTIs [s]
ontime6	6070.2401302457	Sum of GTIs [s]
ontime7	6070.3999774456	Sum of GTIs [s]
l2events	206874	Number of level 2 events

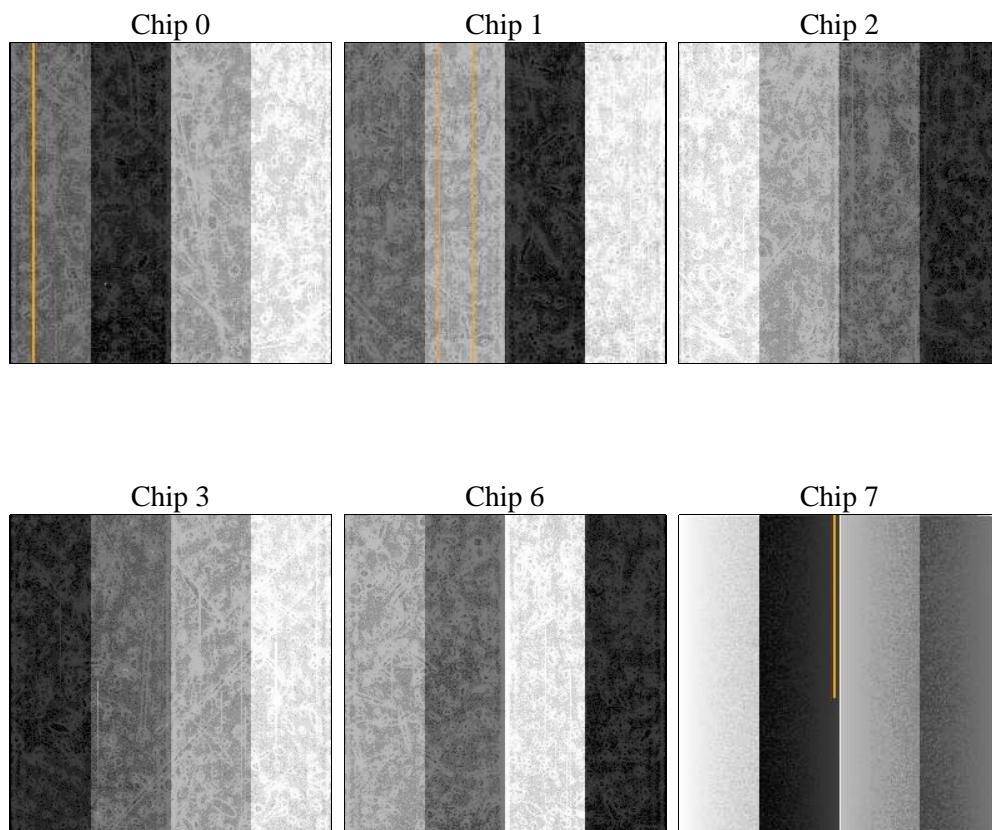
## 2 OBI

### 2.1 OBI

#### 2.1.1 Images



#### 2.1.2 Bias



### 2.1.3 Parameters

obi_num	0	Obi number	sched_exp_time	0.0	[s] Scheduled observation exposure time
ascdsver	8.4.3	Processing system revision	ontime	6070.3999774456	Sum of GTIs [s]
caldsver	4.4.8	&#160	ontime0	6070.3632502556	Sum of GTIs [s]
date	2012-02-25T06:14:25	Date and time of file creation	ontime1	6070.3222102523	Sum of GTIs [s]
revision	2	Processing version of data	ontime2	6070.281170249	Sum of GTIs [s]
			ontime3	6070.3859565258	Sum of GTIs [s]
			ontime6	6070.2401302457	Sum of GTIs [s]
			ontime7	6070.3999774456	Sum of GTIs [s]
			l1events	452627	Number of level 1 events

### 2.1.4 Events

	ccd 0	ccd 1	ccd 2	ccd 3	ccd 6	ccd 7		ccd 0	ccd 1	ccd 2	ccd 3	ccd 6	ccd 7
level 1 events	70355	72173	69288	72225	74466	94120	grade 0 events	17133	16712	17755	17853	16871	8286
rejected events	37397	38877	36580	38925	40347	41653		24%	23%	25%	24%	22%	8%
rejected %	53%	53%	52%	53%	54%	44%	grade 1 events	87	97	110	112	69	72
								0%	0%	0%	0%	0%	0%
							grade 2 events	6161	6890	5593	5848	7016	11766
								8%	9%	8%	8%	9%	12%
							grade 3 events	2272	2137	2223	2363	2169	4425
								3%	2%	3%	3%	2%	4%
							grade 4 events	2279	2122	2230	2331	2095	4273
								3%	2%	3%	3%	2%	4%
							grade 5 events	2285	2257	2272	2473	2363	6045
								3%	3%	3%	3%	3%	6%
							grade 6 events	5113	5435	4907	4905	5968	23717
								7%	7%	7%	6%	8%	25%
							grade 7 events	35025	36523	34198	36340	37915	35536
								49%	50%	49%	50%	50%	37%

## 2.2 Compared Parameters

Parameter	Planned	Actual	Parameter	Planned	Actual
Instrument	ACIS	ACIS	Obspar format version number	7	7
Detector	ACIS-012367	ACIS-012367	Obspar file type	PREDICTED	ACTUAL
Grating	NONE	NONE	Obspar update status	NONE	UPDATED
Data mode	FAINT	FAINT	Number of optional ACIS chips dropped	0	0
Observation mode	SECONDARY	SECONDARY	On-chip summing requested	N	N
[deg] Pointing RA	0	52.96951865645855	Subarray requested	NONE	NONE
[deg] Pointing Dec	0	17.01832765237091	Alternating exposures requested	N	N
[deg] Pointing Roll	0.0	100.5575910619897	[s] Primary exposure time	3.2	3.2
[mm] SIM focus pos	-1.429586	-1.428180813131781			
[mm] SIM defocus	0.1037507710433287	0.1051558262725154			
[mm] SIM translation stage pos	250.455976	250.466033080201			
[mm] SIM translation stage offset	0	-0.01005468664627074			
[s] Observation start time (MET)	435260273.190878	435260272.16587			
Observation start date	2011-10-17T17:37:53	2011-10-17T17:37:52			
[s] Observation end time (MET)	435270970.091441	435270969.06643			
Observation end date	2011-10-17T20:36:10	2011-10-17T20:36:09			
Read mode	TIMED	TIMED			

## **2.3 Star Slots**

## **2.4 FID Slots**

## A Summary

### A.1 Status

V&V Scientist	Jen Lauer
V&V Date (YYYY-MM-DD)	2012.02.27
V&V Edition	1
V&V Disposition and Status	OK
V&V Charge Time	6.0703999774456

### A.2 Comments