

# V&V Reference Report

## L2 ASCDS Version : 8.4.3

Observation 55026 - L2 Version 2  
Chandra X-Ray Center

L2 Processing Date : Feb 27 2012

## Contents

<b>1</b>	<b>Front</b>	<b>2</b>
<b>2</b>	<b>OBI</b>	<b>3</b>
2.1	OBI . . . . .	3
2.1.1	Images . . . . .	3
2.1.2	Bias . . . . .	3
2.1.3	Parameters . . . . .	4
2.1.4	Events . . . . .	4
2.2	Compared Parameters . . . . .	5
2.3	Star Slots . . . . .	6
2.4	FID Slots . . . . .	6
<b>A</b>	<b>Summary</b>	<b>7</b>
A.1	Status . . . . .	7
A.2	Comments . . . . .	7

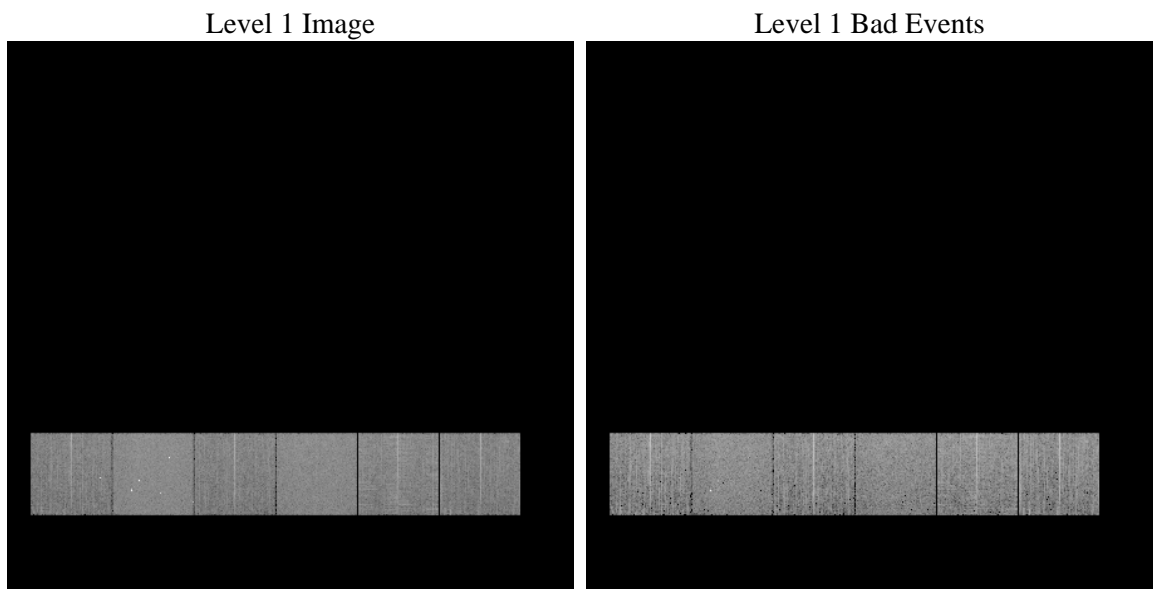
# 1 Front

seq_num	&#160	Sequence number
obs_id	55026	Observation id
title	ACIS-456789 diagnostics	Proposal title
observer	CHANDRA engineering request/realtime commanding	Principal investig
object	&#160	Source name
dtcycle	0	&#160
cycle	P	events from which exps? Prim/Second/Both
ra_targ	0.0	Observer's specified target RA [deg]
dec_targ	0.0	Observer's specified target Dec [deg]
ra_nom	97.978438276343	Nominal RA [deg]
dec_nom	30.021799251983	Nominal Dec [deg]
roll_nom	97.917629409782	Nominal Roll [deg]
revision	2	Processing version of data
ontime	5587.1999792457	Sum of GTIs [s]
livetime	5516.4514889005	Livetime [s]
ontime4	5587.1999792457	Sum of GTIs [s]
ontime5	5587.1999792457	Sum of GTIs [s]
ontime6	5587.1999792457	Sum of GTIs [s]
ontime7	5587.1999792457	Sum of GTIs [s]
ontime8	5587.1999792457	Sum of GTIs [s]
ontime9	5587.1999792457	Sum of GTIs [s]
l2events	214347	Number of level 2 events

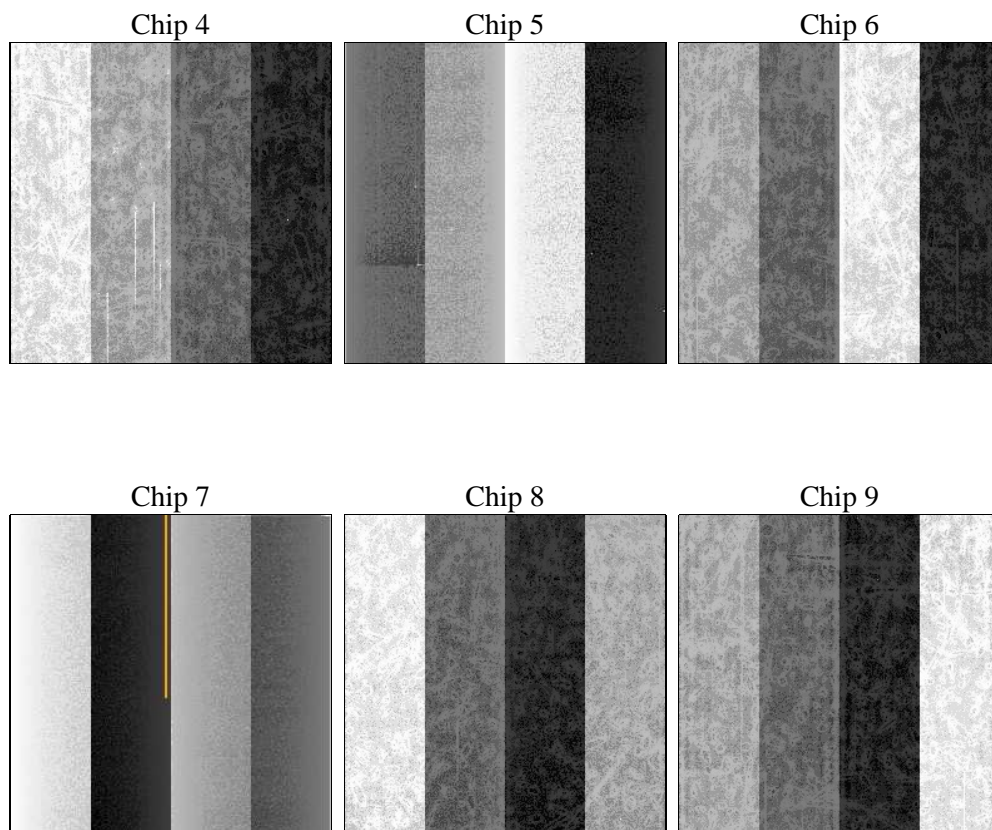
## 2 OBI

### 2.1 OBI

#### 2.1.1 Images



#### 2.1.2 Bias



### 2.1.3 Parameters

obi_num	1	Obi number	sched_exp_time	0.0	[s] Scheduled observation exposure time
ascdsver	8.4.3	Processing system revision	ontime	5587.1999792457	Sum of GTIs [s]
caldbver	4.4.8	&#160	ontime4	5587.1999792457	Sum of GTIs [s]
date	2012-02-27T15:00:06	Date and time of file creation	ontime5	5587.1999792457	Sum of GTIs [s]
revision	2	Processing version of data	ontime6	5587.1999792457	Sum of GTIs [s]
			ontime7	5587.1999792457	Sum of GTIs [s]
			ontime8	5587.1999792457	Sum of GTIs [s]
			ontime9	5587.1999792457	Sum of GTIs [s]
			l1events	495704	Number of level 1 events

### 2.1.4 Events

	ccd 4	ccd 5	ccd 6	ccd 7	ccd 8	ccd 9		ccd 4	ccd 5	ccd 6	ccd 7	ccd 8	ccd 9
level 1 events	72345	100682	72876	90767	85024	74010	grade 0 events	17910	10045	16752	8546	18598	16244
rejected events	41810	43435	41138	40576	46070	43365		24%	9%	22%	9%	21%	21%
rejected %	57%	43%	56%	44%	54%	58%	grade 1 events	134	246	79	74	109	105
								0%	0%	0%	0%	0%	0%
							grade 2 events	4924	19623	6073	10877	7758	5587
								6%	19%	8%	11%	9%	7%
							grade 3 events	2205	2322	2102	4546	3042	2168
								3%	2%	2%	5%	3%	2%
							grade 4 events	2161	2294	2110	4544	3025	2174
								2%	2%	2%	5%	3%	2%
							grade 5 events	2467	5544	2577	6246	3282	2879
								3%	5%	3%	6%	3%	3%
							grade 6 events	4083	24176	5419	22754	7408	5150
								5%	24%	7%	25%	8%	6%
							grade 7 events	38461	36432	37764	33180	41802	39703
								53%	36%	51%	36%	49%	53%

## 2.2 Compared Parameters

Parameter	Planned	Actual	Parameter	Planned	Actual
Instrument	ACIS	ACIS	Obspar format version number	7	7
Detector	ACIS-456789	ACIS-456789	Obspar file type	PREDICTED	ACTUAL
Grating	NONE	NONE	Obspar update status	OVERRIDE	OVERRIDE
Data mode	FAINT	FAINT	Number of optional ACIS chips dropped	0	0
Observation mode	SECONDARY	SECONDARY	On-chip summing requested	N	N
[deg] Pointing RA	0	97.97843827634253	Subarray requested	NONE	NONE
[deg] Pointing Dec	0	30.02179925198271	Alternating exposures requested	N	N
[deg] Pointing Roll	0.0	97.91762940978191	[s] Primary exposure time	3.2	3.2
SIM focus pos (mm)	-1.4281808131	-1.4281808131			
[mm] SIM defocus	0.1051557500557434	0.1051557500557434			
SIM translation stage pos (mm)	250.4660330802	250.4660330802			
[mm] SIM translation stage offset	-0.01005726120527584	-0.01005726120527584			
[s] Observation start time (MET)	438885952.368958	438885952.368958			
Observation start date	2011-11-28T16:45:52	2011-11-28T16:45:52			
[s] Observation end time (MET)	438892921.817525	438892921.817525			
Observation end date	2011-11-28T18:42:02	2011-11-28T18:42:01			
Read mode	TIMED	TIMED			

## 2.3 Star Slots

## 2.4 FID Slots

## A Summary

### A.1 Status

V&V Scientist	Beth Sundheim
V&V Date (YYYY-MM-DD)	2012.02.28
V&V Edition	1
V&V Disposition and Status	OK
V&V Charge Time	5.5871999792457

### A.2 Comments