

V&V Reference Report

L2 ASCDS Version : 8.4.3

Observation 55021 - L2 Version 2
Chandra X-Ray Center

L2 Processing Date : Feb 27 2012

Contents

1	Front	2
2	OBI	3
2.1	OBI	3
2.1.1	Images	3
2.1.2	Bias	3
2.1.3	Parameters	4
2.1.4	Events	4
2.2	Compared Parameters	5
2.3	Star Slots	6
2.4	FID Slots	6
A	Summary	7
A.1	Status	7
A.2	Comments	7

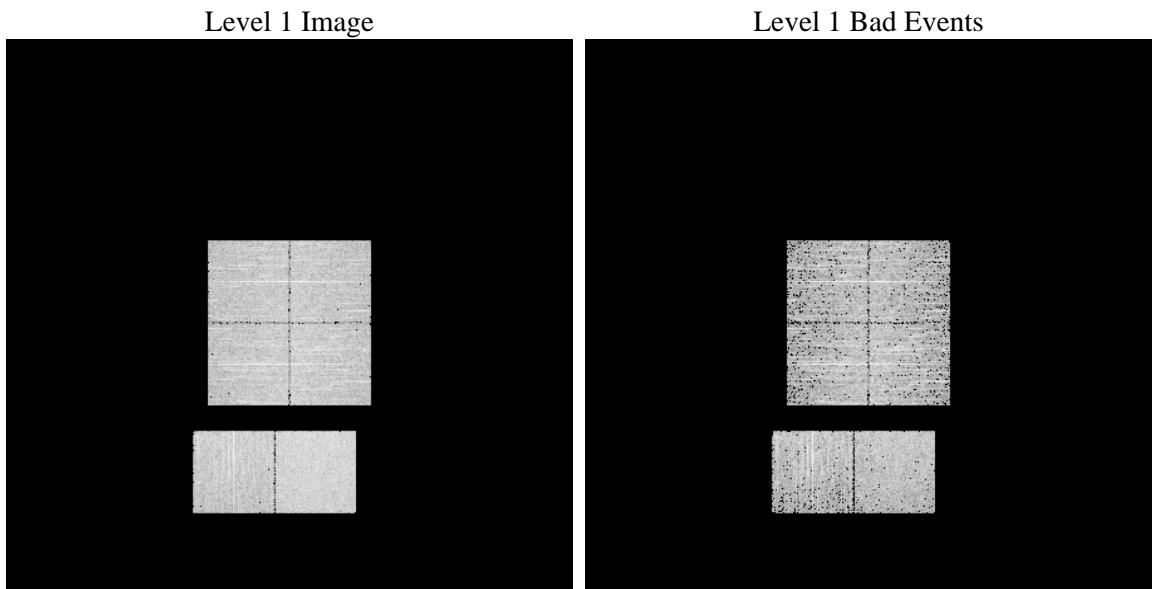
1 Front

seq_num	 	Sequence number
obs_id	55021	Observation id
title	ACIS-012367 diagnostics	Proposal title
observer	CHANDRA engineering request/realtime commanding	Principal investig
object	 	Source name
dtcycle	0	
cycle	P	events from which exps? Prim/Second/Both
ra_targ	0.0	Observer's specified target RA [deg]
dec_targ	0.0	Observer's specified target Dec [deg]
ra_nom	40.023888579159	Nominal RA [deg]
dec_nom	13.98310112693	Nominal Dec [deg]
roll_nom	290.81750842571	Nominal Roll [deg]
revision	2	Processing version of data
ontime	3209.5999881029	Sum of GTIs [s]
livetime	3168.9581004645	Livetime [s]
ontime0	3209.5999881029	Sum of GTIs [s]
ontime1	3209.5999881029	Sum of GTIs [s]
ontime2	3209.5999881029	Sum of GTIs [s]
ontime3	3209.5999881029	Sum of GTIs [s]
ontime6	3209.5999881029	Sum of GTIs [s]
ontime7	3209.5999881029	Sum of GTIs [s]
l2events	110464	Number of level 2 events

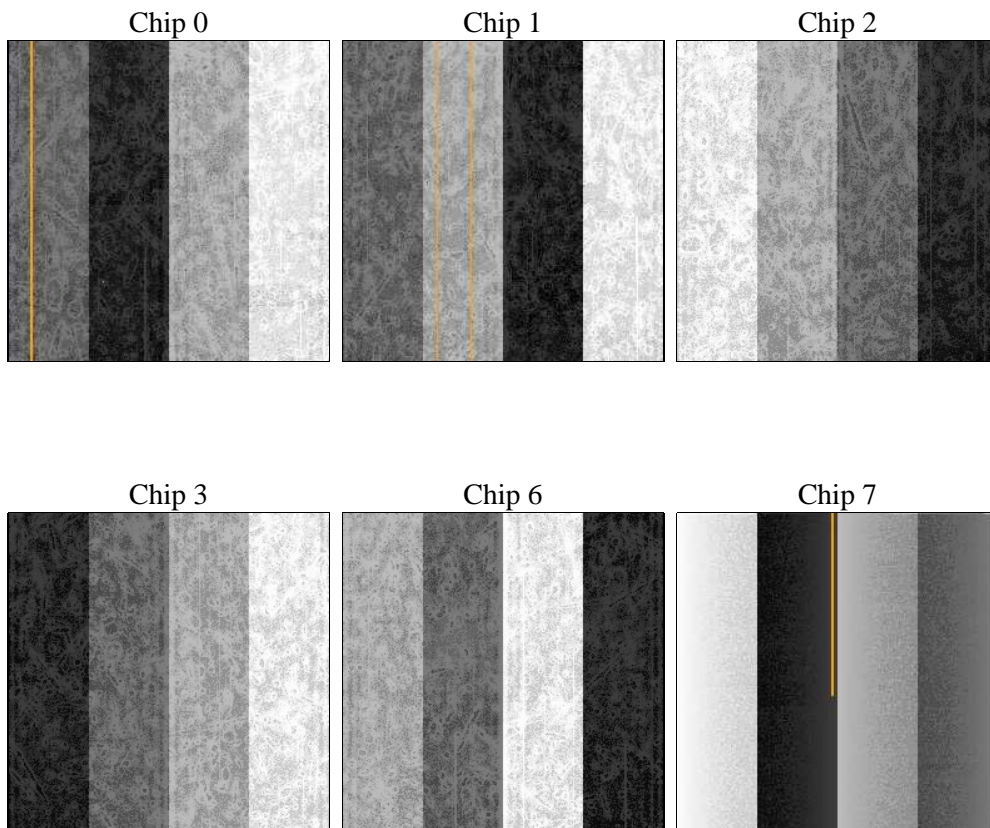
2 OBI

2.1 OBI

2.1.1 Images



2.1.2 Bias



2.1.3 Parameters

obi_num	1	Obi number	sched_exp_time	0.0	[s] Scheduled observation exposure time
ascdsver	8.4.3	Processing system revision	ontime	3209.5999881029	Sum of GTIs [s]
caldsver	4.4.8	 	ontime0	3209.5999881029	Sum of GTIs [s]
date	2012-02-28T00:36:24	Date and time of file creation	ontime1	3209.5999881029	Sum of GTIs [s]
revision	2	Processing version of data	ontime2	3209.5999881029	Sum of GTIs [s]
			ontime3	3209.5999881029	Sum of GTIs [s]
			ontime6	3209.5999881029	Sum of GTIs [s]
			ontime7	3209.5999881029	Sum of GTIs [s]
			l1events	252743	Number of level 1 events

2.1.4 Events

	ccd 0	ccd 1	ccd 2	ccd 3	ccd 6	ccd 7		ccd 0	ccd 1	ccd 2	ccd 3	ccd 6	ccd 7
level 1 events	38071	38237	39977	41530	41862	53066	grade 0 events	9425	9110	9661	9580	9520	4919
rejected events	20730	20772	22387	24056	23646	24201		24%	23%	24%	23%	22%	9%
rejected %	54%	54%	55%	57%	56%	45%	grade 1 events	48	48	69	52	49	48
								0%	0%	0%	0%	0%	0%
							grade 2 events	3293	3540	3182	3188	3616	6296
								8%	9%	7%	7%	8%	11%
							grade 3 events	1230	1196	1232	1254	1179	2675
								3%	3%	3%	3%	2%	5%
							grade 4 events	1183	1196	1229	1305	1161	2649
								3%	3%	3%	3%	2%	4%
							grade 5 events	1352	1351	1301	1439	1487	3658
								3%	3%	3%	3%	3%	6%
							grade 6 events	2662	2894	2746	2636	3227	13097
								6%	7%	6%	6%	7%	24%
							grade 7 events	18878	18902	20557	22076	21623	19724
								49%	49%	51%	53%	51%	37%

2.2 Compared Parameters

Parameter	Planned	Actual
Instrument	ACIS	ACIS
Detector	ACIS-012367	ACIS-012367
Grating	NONE	NONE
Data mode	FAINT	FAINT
Observation mode	SECONDARY	SECONDARY
[deg] Pointing RA	0	40.02388857915882
[deg] Pointing Dec	0	13.98310112693016
[deg] Pointing Roll	0.0	290.8175084257082
SIM focus pos (mm)	-1.4281808131	-1.4281808131
[mm] SIM defocus	0.1051557500557434	0.1051557500557434
SIM translation stage pos (mm)	250.4660330802	250.4660330802
[mm] SIM translation stage offset	-0.01005726120527584	-0.01005726120527584
[s] Observation start time (MET)	439116938.181157	439116938.181157
Observation start date	2011-12-01T08:55:38	2011-12-01T08:55:38
[s] Observation end time (MET)	439121486.584497	439121486.584497
Observation end date	2011-12-01T10:11:27	2011-12-01T10:11:26
Read mode	TIMED	TIMED

Parameter	Planned	Actual
Obspar format version number	7	7
Obspar file type	PREDICTED	ACTUAL
Obspar update status	OVERRIDE	OVERRIDE
Number of optional ACIS chips dropped	0	0
On-chip summing requested	N	N
Subarray requested	NONE	NONE
Alternating exposures requested	N	N
[s] Primary exposure time	3.2	3.2

2.3 Star Slots

2.4 FID Slots

A Summary

A.1 Status

V&V Scientist	Beth Sundheim
V&V Date (YYYY-MM-DD)	2012.02.29
V&V Edition	1
V&V Disposition and Status	OK
V&V Charge Time	3.2095999881029

A.2 Comments