

# V&V Reference Report

## L2 ASCDS Version : 8.4.5

Observation 56245 - L2 Version 2  
Chandra X-Ray Center

L2 Processing Date : Jun 26 2012

## Contents

<b>1</b>	<b>Front</b>	<b>2</b>
<b>2</b>	<b>OBI</b>	<b>3</b>
2.1	OBI . . . . .	3
2.1.1	Images . . . . .	3
2.1.2	Bias . . . . .	3
2.1.3	Parameters . . . . .	4
2.1.4	Events . . . . .	4
2.2	Compared Parameters . . . . .	5
2.3	Star Slots . . . . .	6
2.4	FID Slots . . . . .	6
<b>A</b>	<b>Summary</b>	<b>7</b>
A.1	Status . . . . .	7
A.2	Comments . . . . .	7

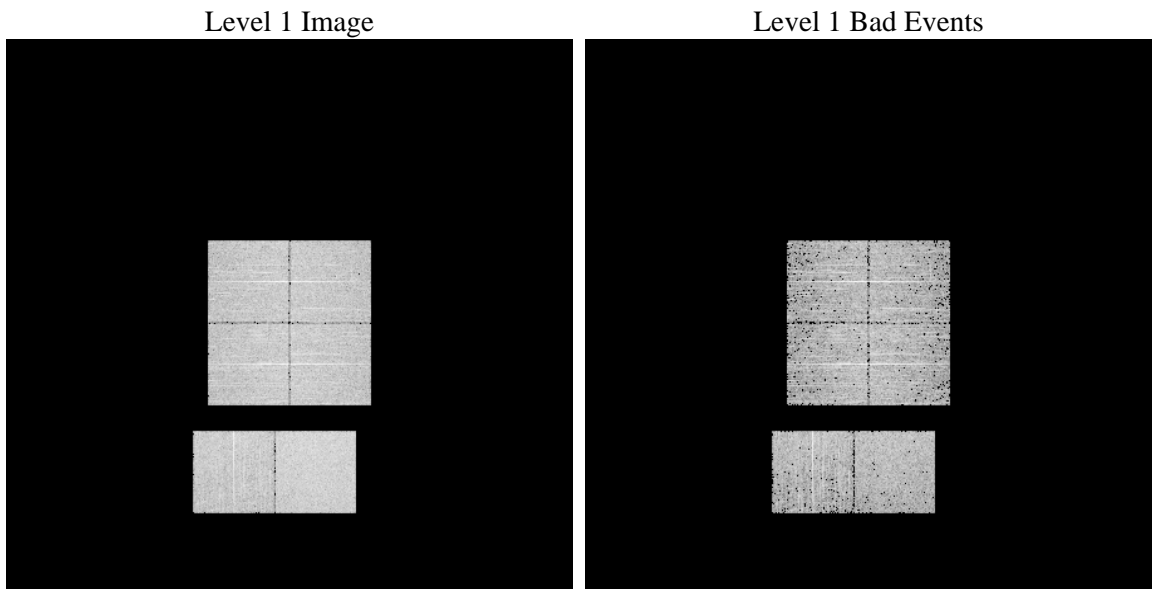
# 1 Front

seq_num	&#160	Sequence number
obs_id	56245	Observation id
title	ACIS-012367 diagnostics	Proposal title
observer	CHANDRA engineering request/realtime commanding	Principal investig
object	&#160	Source name
dtcycle	0	&#160
cycle	P	events from which exps? Prim/Second/Both
ra_targ	0.0	Observer's specified target RA [deg]
dec_targ	0.0	Observer's specified target Dec [deg]
ra_nom	244.02104884331	Nominal RA [deg]
dec_nom	-33.97719915452	Nominal Dec [deg]
roll_nom	19.658999570999	Nominal Roll [deg]
revision	2	Processing version of data
ontime	3283.1392373443	Sum of GTIs [s]
livetime	3241.5661514519	Livetime [s]
ontime0	3285.8171023726	Sum of GTIs [s]
ontime1	3285.7760623693	Sum of GTIs [s]
ontime2	3285.735022366	Sum of GTIs [s]
ontime3	3283.1392373443	Sum of GTIs [s]
ontime6	3285.6939823627	Sum of GTIs [s]
ontime7	3283.1392373443	Sum of GTIs [s]
l2events	156869	Number of level 2 events

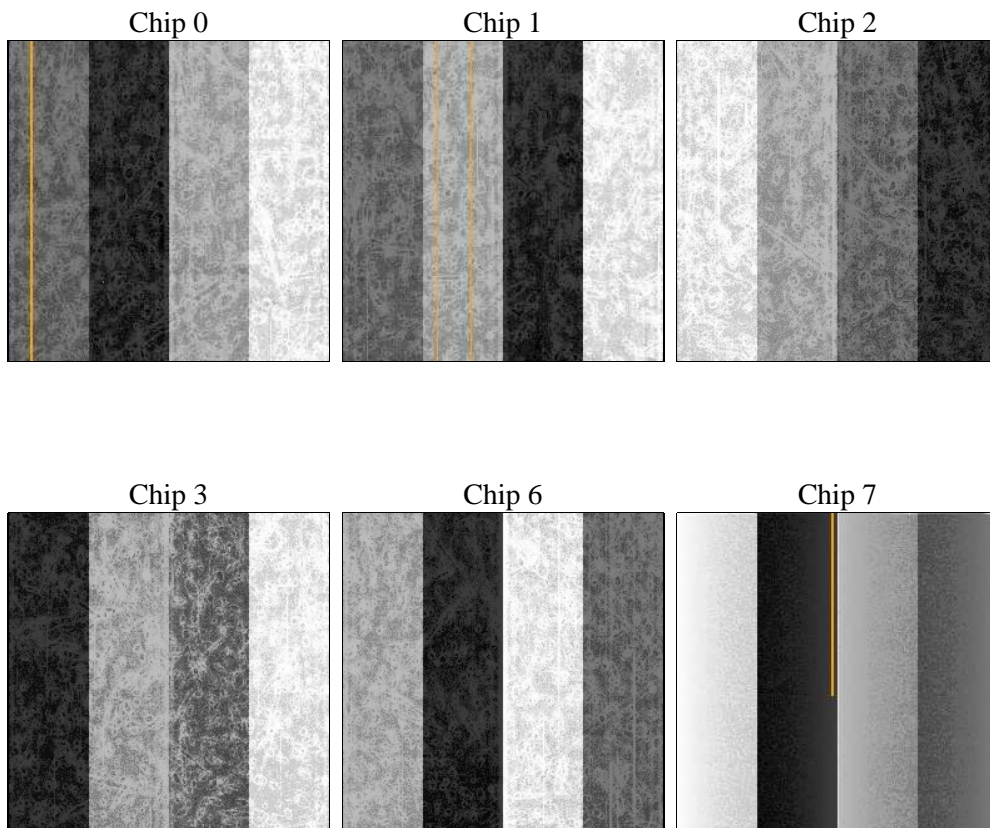
## 2 OBI

### 2.1 OBI

#### 2.1.1 Images



#### 2.1.2 Bias



### 2.1.3 Parameters

obi_num	0	Obi number	sched_exp_time	0.0	[s] Scheduled observation exposure time
ascdsver	8.4.5	Processing system revision	ontime	3283.1392373443	Sum of GTIs [s]
caldsver	4.4.10	&#160	ontime0	3285.8171023726	Sum of GTIs [s]
date	2012-06-26T04:09:12	Date and time of file creation	ontime1	3285.7760623693	Sum of GTIs [s]
revision	2	Processing version of data	ontime2	3285.735022366	Sum of GTIs [s]
			ontime3	3283.1392373443	Sum of GTIs [s]
			ontime6	3285.6939823627	Sum of GTIs [s]
			ontime7	3283.1392373443	Sum of GTIs [s]
			l1events	321277	Number of level 1 events

### 2.1.4 Events

	ccd 0	ccd 1	ccd 2	ccd 3	ccd 6	ccd 7		ccd 0	ccd 1	ccd 2	ccd 3	ccd 6	ccd 7
level 1 events	49663	49762	52039	51900	52713	65200	grade 0 events	13374	13166	13664	13574	13399	7012
rejected events	24645	24471	26646	26802	26808	25836		26%	26%	26%	26%	25%	10%
rejected %	49%	49%	51%	51%	50%	39%	grade 1 events	86	80	98	99	79	54
								0%	0%	0%	0%	0%	0%
							grade 2 events	4517	4873	4470	4476	4632	8665
								9%	9%	8%	8%	8%	13%
							grade 3 events	1729	1588	1842	1708	1683	3567
								3%	3%	3%	3%	3%	5%
							grade 4 events	1726	1638	1691	1812	1800	3560
								3%	3%	3%	3%	3%	5%
							grade 5 events	1516	1617	1454	1669	1677	4242
								3%	3%	2%	3%	3%	6%
							grade 6 events	3672	4026	3726	3528	4391	16560
								7%	8%	7%	6%	8%	25%
							grade 7 events	23043	22774	25094	25034	25052	21540
								46%	45%	48%	48%	47%	33%

## 2.2 Compared Parameters

Parameter	Planned	Actual	Parameter	Planned	Actual
Instrument	ACIS	ACIS	Obspar format version number	7	7
Detector	ACIS-012367	ACIS-012367	Obspar file type	PREDICTED	ACTUAL
Grating	NONE	NONE	Obspar update status	NONE	UPDATED
Data mode	FAINT	FAINT	Number of optional ACIS chips dropped	0	0
Observation mode	SECONDARY	SECONDARY	On-chip summing requested	N	N
[deg] Pointing RA	0	244.0210488433125	Subarray requested	NONE	NONE
[deg] Pointing Dec	0	-33.9771991545201	Alternating exposures requested	N	N
[deg] Pointing Roll	0.0	19.65899957099942	[s] Primary exposure time	3.2	3.2
[mm] SIM focus pos	-1.429586	-1.428180813131781			
[mm] SIM defocus	0.1037507710433287	0.1051558262725154			
[mm] SIM translation stage pos	250.455976	250.466033080201			
[mm] SIM translation stage offset	0	-0.01005468664627074			
[s] Observation start time (MET)	390907576.219091	390907575.19409			
Observation start date	2010-05-22T09:26:16	2010-05-22T09:26:15			
[s] Observation end time (MET)	390919376.019692	390919374.99469			
Observation end date	2010-05-22T12:42:56	2010-05-22T12:42:54			
Read mode	TIMED	TIMED			

## 2.3 Star Slots

## 2.4 FID Slots

## A Summary

### A.1 Status

V&V Scientist	Beth Sundheim
V&V Date (YYYY-MM-DD)	2012.07.03
V&V Edition	1
V&V Disposition and Status	OK
V&V Charge Time	3.2831392373443

### A.2 Comments