

V&V Reference Report

L2 ASCDS Version : 8.4.5

Observation 56121 - L2 Version 2
Chandra X-Ray Center

L2 Processing Date : Jun 30 2012

Contents

1	Front	2
2	OBI	3
2.1	OBI	3
2.1.1	Images	3
2.1.2	Bias	3
2.1.3	Parameters	4
2.1.4	Events	4
2.2	Compared Parameters	5
2.3	Star Slots	6
2.4	FID Slots	6
A	Summary	7
A.1	Status	7
A.2	Comments	7

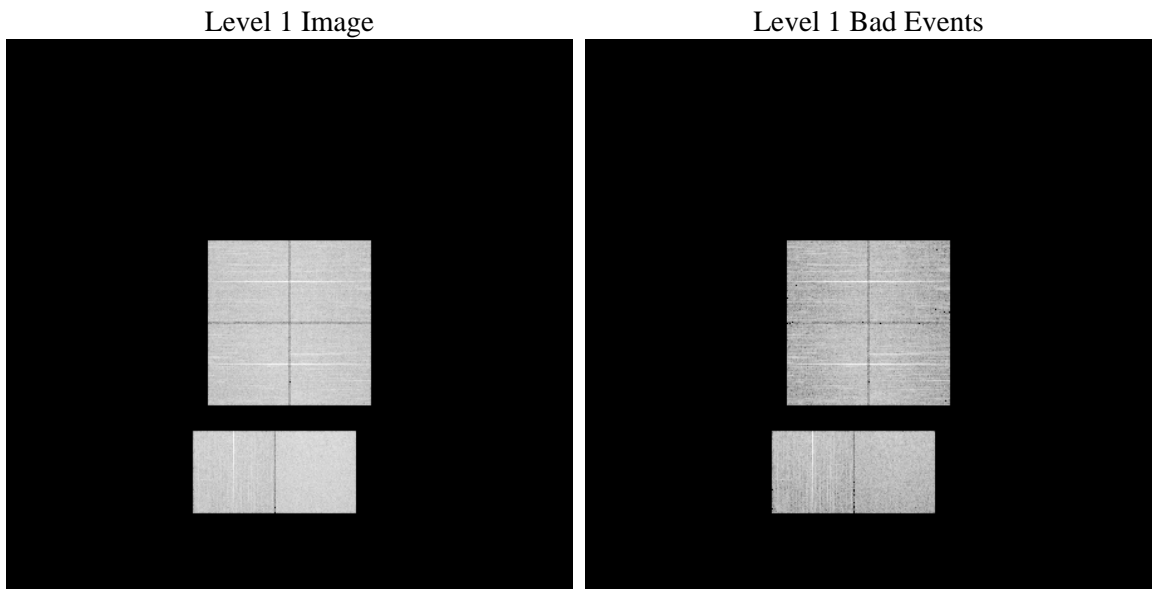
1 Front

seq_num	 	Sequence number
obs_id	56121	Observation id
title	ACIS-012367 diagnostics	Proposal title
observer	CHANDRA engineering request/realtime commanding	Principal investig
object	 	Source name
dtcycle	0	
cycle	P	events from which exps? Prim/Second/Both
ra_targ	0.0	Observer's specified target RA [deg]
dec_targ	0.0	Observer's specified target Dec [deg]
ra_nom	288.97923394884	Nominal RA [deg]
dec_nom	1.9801488930623	Nominal Dec [deg]
roll_nom	190.84514099304	Nominal Roll [deg]
revision	2	Processing version of data
ontime	8278.3999692202	Sum of GTIs [s]
livetime	8173.5738841559	Livetime [s]
ontime0	8278.3999692202	Sum of GTIs [s]
ontime1	8278.3999692202	Sum of GTIs [s]
ontime2	8278.3999692202	Sum of GTIs [s]
ontime3	8278.3999692202	Sum of GTIs [s]
ontime6	8278.3999692202	Sum of GTIs [s]
ontime7	8278.3999692202	Sum of GTIs [s]
l2events	377470	Number of level 2 events

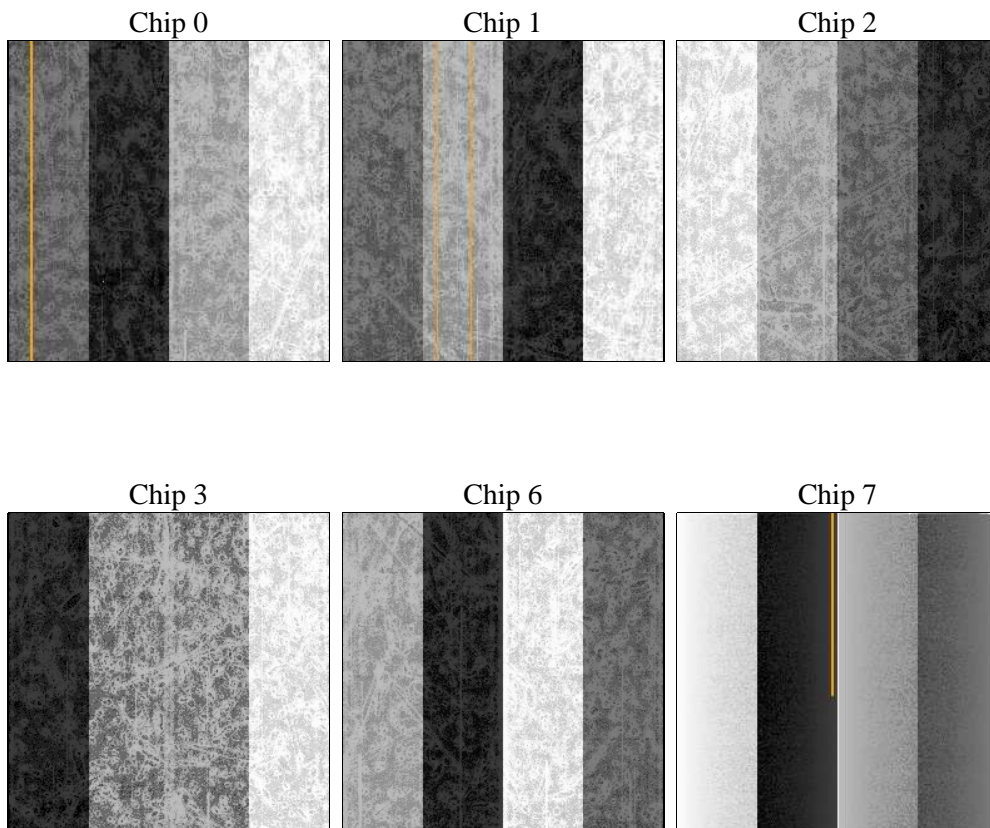
2 OBI

2.1 OBI

2.1.1 Images



2.1.2 Bias



2.1.3 Parameters

obi_num	0	Obi number	sched_exp_time	0.0	[s] Scheduled observation exposure time
ascdsver	8.4.5	Processing system revision	ontime	8278.3999692202	Sum of GTIs [s]
caldsver	4.5.0	 	ontime0	8278.3999692202	Sum of GTIs [s]
date	2012-06-30T04:03:46	Date and time of file creation	ontime1	8278.3999692202	Sum of GTIs [s]
revision	2	Processing version of data	ontime2	8278.3999692202	Sum of GTIs [s]
			ontime3	8278.3999692202	Sum of GTIs [s]
			ontime6	8278.3999692202	Sum of GTIs [s]
			ontime7	8278.3999692202	Sum of GTIs [s]
			l1events	806485	Number of level 1 events

2.1.4 Events

	ccd 0	ccd 1	ccd 2	ccd 3	ccd 6	ccd 7		ccd 0	ccd 1	ccd 2	ccd 3	ccd 6	ccd 7
level 1 events	125918	125081	128787	130616	132664	163419	grade 0 events	31903	30572	32668	33189	31397	16022
rejected events	65461	64484	68909	69572	70382	68558		25%	24%	25%	25%	23%	9%
rejected %	51%	51%	53%	53%	53%	41%	grade 1 events	217	173	247	252	151	151
								0%	0%	0%	0%	0%	0%
							grade 2 events	11174	12321	10181	10467	12049	21054
								8%	9%	7%	8%	9%	12%
							grade 3 events	4106	3904	4060	4202	3930	8257
								3%	3%	3%	3%	2%	5%
							grade 4 events	4056	4063	4042	4166	3934	8170
								3%	3%	3%	3%	2%	4%
							grade 5 events	3668	3852	3563	4058	3860	10336
								2%	3%	2%	3%	2%	6%
							grade 6 events	9218	9737	8927	9043	10972	41358
								7%	7%	6%	6%	8%	25%
							grade 7 events	61576	60459	65099	65239	66371	58071
								48%	48%	50%	49%	50%	35%

2.2 Compared Parameters

Parameter	Planned	Actual	Parameter	Planned	Actual
Instrument	ACIS	ACIS	Obspar format version number	7	7
Detector	ACIS-012367	ACIS-012367	Obspar file type	PREDICTED	ACTUAL
Grating	NONE	NONE	Obspar update status	NONE	UPDATED
Data mode	FAINT	FAINT	Number of optional ACIS chips dropped	0	0
Observation mode	SECONDARY	SECONDARY	On-chip summing requested	N	N
[deg] Pointing RA	0	288.9792339488372	Subarray requested	NONE	NONE
[deg] Pointing Dec	0	1.980148893062255	Alternating exposures requested	N	N
[deg] Pointing Roll	0.0	190.8451409930381	[s] Primary exposure time	3.2	3.2
[mm] SIM focus pos	-1.429586	-1.428180813131781			
[mm] SIM defocus	0.1037507710433287	0.1051558262725154			
[mm] SIM translation stage pos	250.455976	250.466033080201			
[mm] SIM translation stage offset	0	-0.01005468664627074			
[s] Observation start time (MET)	395506353.753701	395506352.72869			
Observation start date	2010-07-14T14:52:34	2010-07-14T14:52:32			
[s] Observation end time (MET)	395517745.604283	395517744.57927			
Observation end date	2010-07-14T18:02:26	2010-07-14T18:02:24			
Read mode	TIMED	TIMED			

2.3 Star Slots

2.4 FID Slots

A Summary

A.1 Status

V&V Scientist	Jen Lauer
V&V Date (YYYY-MM-DD)	2012.07.09
V&V Edition	1
V&V Disposition and Status	OK
V&V Charge Time	8.2783999692202

A.2 Comments