

V&V Reference Report

L2 ASCDS Version : 8.4.5

Observation 56097 - L2 Version 2
Chandra X-Ray Center

L2 Processing Date : Jul 1 2012

Contents

1	Front	2
2	OBI	3
2.1	OBI	3
2.1.1	Images	3
2.1.2	Bias	3
2.1.3	Parameters	4
2.1.4	Events	4
2.2	Compared Parameters	5
2.3	Star Slots	6
2.4	FID Slots	6
A	Summary	7
A.1	Status	7
A.2	Comments	7

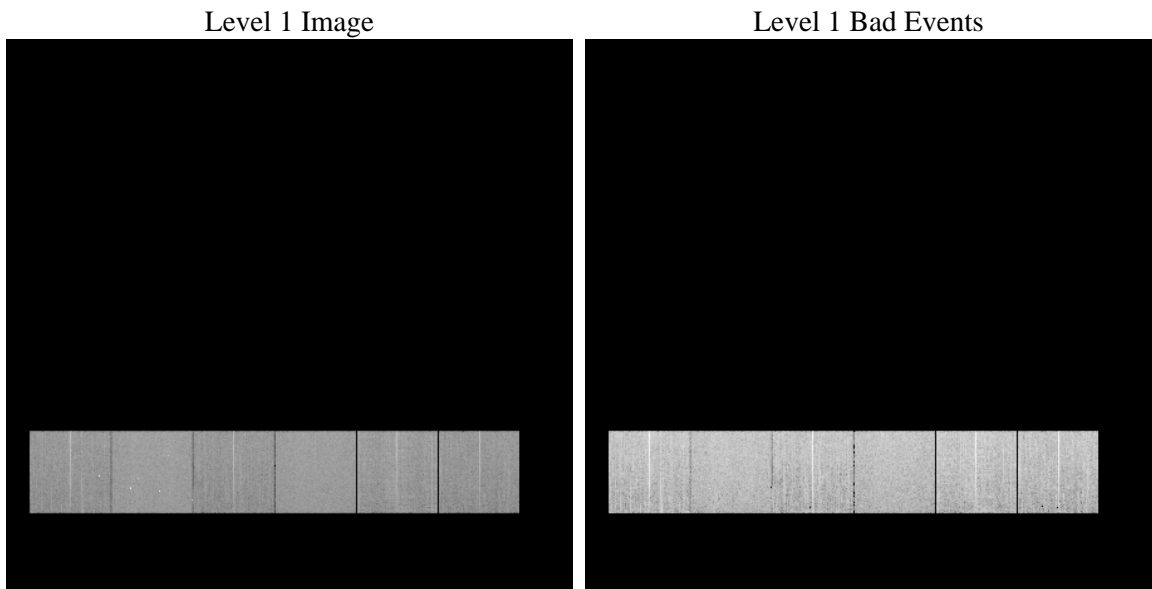
1 Front

seq_num	 	Sequence number
obs_id	56097	Observation id
title	ACIS-456789 diagnostics	Proposal title
observer	CHANDRA engineering request/realtime commanding	Principal investig
object	 	Source name
dtcycle	0	
cycle	P	events from which exps? Prim/Second/Both
ra_targ	0.0	Observer's specified target RA [deg]
dec_targ	0.0	Observer's specified target Dec [deg]
ra_nom	174.05370764989	Nominal RA [deg]
dec_nom	55.688168976902	Nominal Dec [deg]
roll_nom	302.46072128038	Nominal Roll [deg]
revision	2	Processing version of data
ontime	8278.3999692202	Sum of GTIs [s]
livetime	8173.5738841559	Livetime [s]
ontime4	8278.3999692202	Sum of GTIs [s]
ontime5	8278.3999692202	Sum of GTIs [s]
ontime6	8278.3999692202	Sum of GTIs [s]
ontime7	8278.3999692202	Sum of GTIs [s]
ontime8	8278.3999692202	Sum of GTIs [s]
ontime9	8278.3999692202	Sum of GTIs [s]
l2events	417012	Number of level 2 events

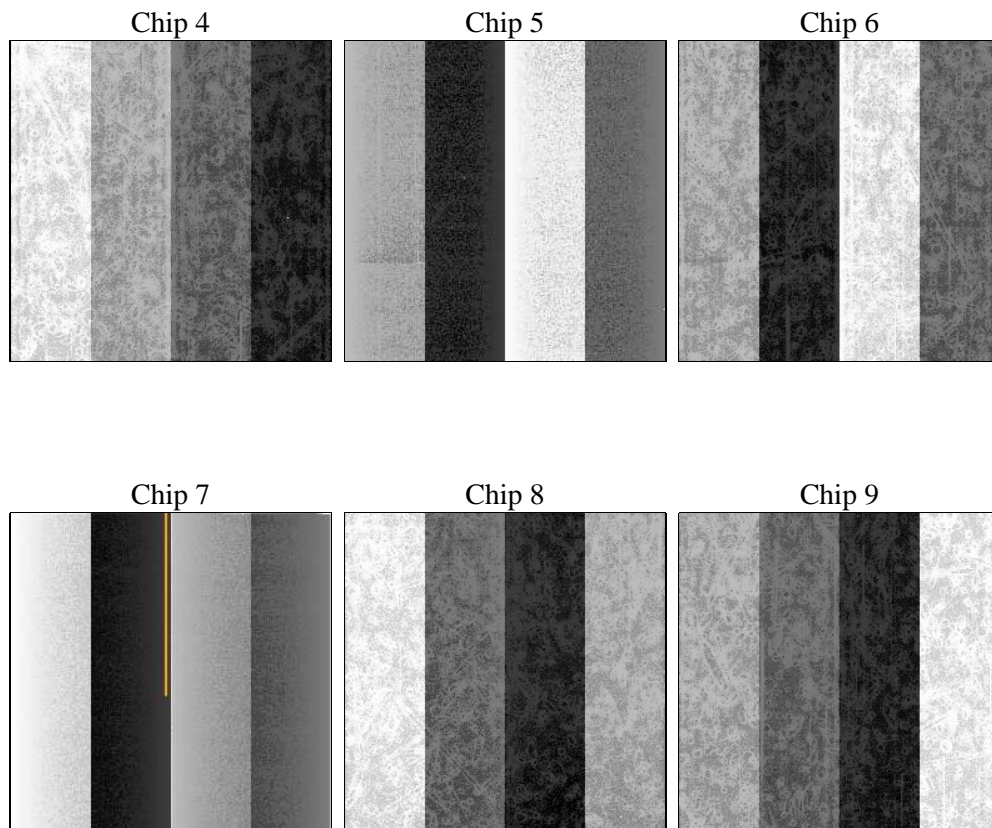
2 OBI

2.1 OBI

2.1.1 Images



2.1.2 Bias



2.1.3 Parameters

obi_num	0	Obi number	sched_exp_time	0.0	[s] Scheduled observation exposure time
ascdsver	8.4.5	Processing system revision	ontime	8278.3999692202	Sum of GTIs [s]
caldsver	4.5.0	 	ontime4	8278.3999692202	Sum of GTIs [s]
date	2012-07-01T03:30:52	Date and time of file creation	ontime5	8278.3999692202	Sum of GTIs [s]
revision	2	Processing version of data	ontime6	8278.3999692202	Sum of GTIs [s]
			ontime7	8278.3999692202	Sum of GTIs [s]
			ontime8	8278.3999692202	Sum of GTIs [s]
			ontime9	8278.3999692202	Sum of GTIs [s]
			l1events	884432	Number of level 1 events

2.1.4 Events

	ccd 4	ccd 5	ccd 6	ccd 7	ccd 8	ccd 9		ccd 4	ccd 5	ccd 6	ccd 7	ccd 8	ccd 9
level 1 events	135240	168840	132230	162421	155126	130575	grade 0 events	34572	15181	32289	17038	37073	32348
rejected events	74034	68913	69883	66238	77763	69630		25%	8%	24%	10%	23%	24%
rejected %	54%	40%	52%	40%	50%	53%	grade 1 events	277	291	179	168	269	196
								0%	0%	0%	0%	0%	0%
							grade 2 events	9998	34316	11449	21193	14821	10674
								7%	20%	8%	13%	9%	8%
							grade 3 events	4272	4691	4028	8681	5814	4059
								3%	2%	3%	5%	3%	3%
							grade 4 events	4245	4525	4134	8808	5677	4082
								3%	2%	3%	5%	3%	3%
							grade 5 events	4003	9296	4221	10614	5542	4708
								2%	5%	3%	6%	3%	3%
							grade 6 events	8136	41214	10468	40463	14011	9782
								6%	24%	7%	24%	9%	7%
							grade 7 events	69737	59326	65462	55456	71919	64726
								51%	35%	49%	34%	46%	49%

2.2 Compared Parameters

Parameter	Planned	Actual	Parameter	Planned	Actual
Instrument	ACIS	ACIS	Obspar format version number	7	7
Detector	ACIS-456789	ACIS-456789	Obspar file type	PREDICTED	ACTUAL
Grating	NONE	NONE	Obspar update status	NONE	UPDATED
Data mode	FAINT	FAINT	Number of optional ACIS chips dropped	0	0
Observation mode	SECONDARY	SECONDARY	On-chip summing requested	N	N
[deg] Pointing RA	0	174.0537076498902	Subarray requested	NONE	NONE
[deg] Pointing Dec	0	55.68816897690236	Alternating exposures requested	N	N
[deg] Pointing Roll	0.0	302.46072128038	[s] Primary exposure time	3.2	3.2
[mm] SIM focus pos	-1.429586	-1.428180813131781			
[mm] SIM defocus	0.1037507710433287	0.1051558262725154			
[mm] SIM translation stage pos	250.455976	250.466033080201			
[mm] SIM translation stage offset	0	-0.01005468664627074			
[s] Observation start time (MET)	397072771.133761	397072770.10878			
Observation start date	2010-08-01T17:59:31	2010-08-01T17:59:30			
[s] Observation end time (MET)	397083613.584315	397083612.55933			
Observation end date	2010-08-01T21:00:14	2010-08-01T21:00:12			
Read mode	TIMED	TIMED			

2.3 Star Slots

2.4 FID Slots

A Summary

A.1 Status

V&V Scientist	Jen Lauer
V&V Date (YYYY-MM-DD)	2012.07.10
V&V Edition	1
V&V Disposition and Status	OK
V&V Charge Time	8.2783999692202

A.2 Comments