

V&V Reference Report

L2 ASCDS Version : 8.4.5

Observation 56064 - L2 Version 2
Chandra X-Ray Center

L2 Processing Date : Jul 2 2012

Contents

1	Front	2
2	OBI	3
2.1	OBI	3
2.1.1	Images	3
2.1.2	Bias	3
2.1.3	Parameters	4
2.1.4	Events	4
2.2	Compared Parameters	5
2.3	Star Slots	6
2.4	FID Slots	6
A	Summary	7
A.1	Status	7
A.2	Comments	7

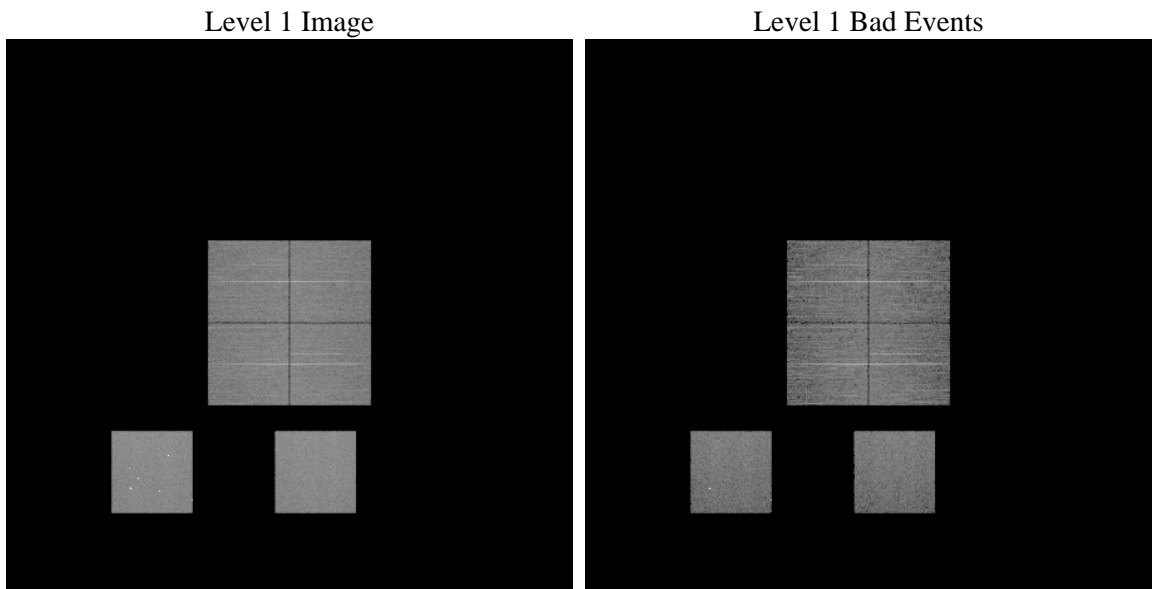
1 Front

seq_num	 	Sequence number
obs_id	56064	Observation id
title	ACIS-012357 diagnostics	Proposal title
observer	CHANDRA engineering request/realtime commanding	Principal investig
object	 	Source name
dtcycle	0	
cycle	P	events from which exps? Prim/Second/Both
ra_targ	0.0	Observer's specified target RA [deg]
dec_targ	0.0	Observer's specified target Dec [deg]
ra_nom	310.99811125983	Nominal RA [deg]
dec_nom	2.9699750213605	Nominal Dec [deg]
roll_nom	234.2591283622	Nominal Roll [deg]
revision	2	Processing version of data
ontime	8281.5999692082	Sum of GTIs [s]
livetime	8176.7333638173	Livetime [s]
ontime0	8281.5999692082	Sum of GTIs [s]
ontime1	8281.5999692082	Sum of GTIs [s]
ontime2	8281.5999692082	Sum of GTIs [s]
ontime3	8281.5999692082	Sum of GTIs [s]
ontime5	8281.5999692082	Sum of GTIs [s]
ontime7	8281.5999692082	Sum of GTIs [s]
l2events	407435	Number of level 2 events

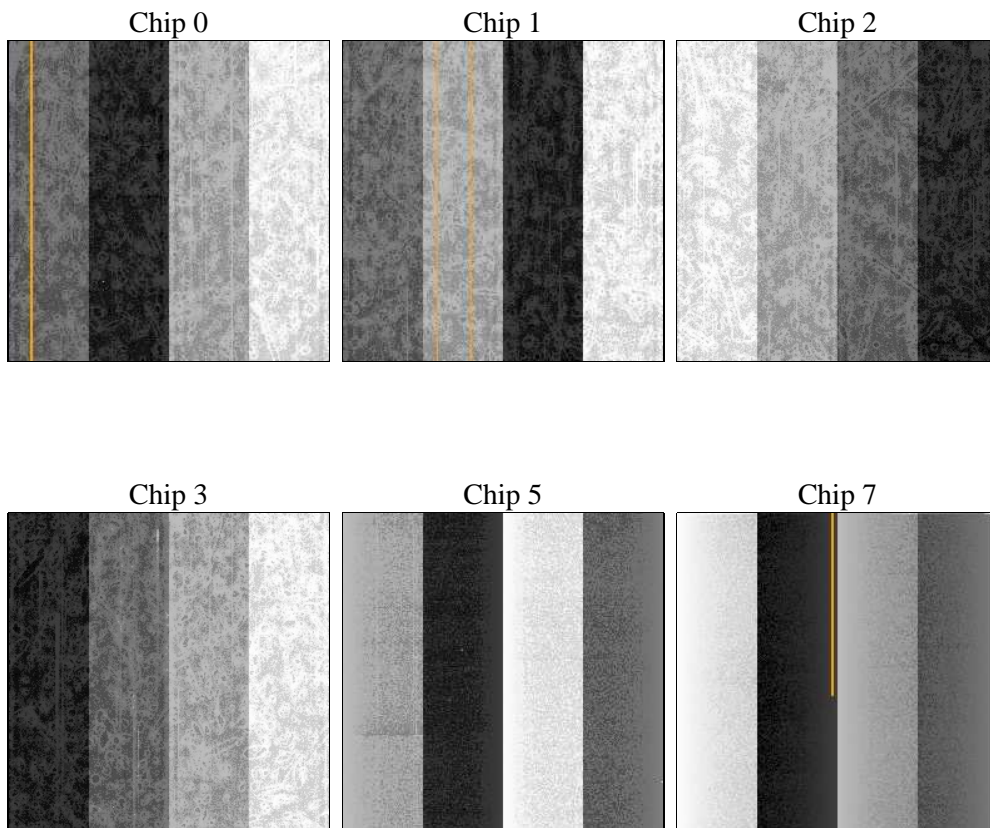
2 OBI

2.1 OBI

2.1.1 Images



2.1.2 Bias



2.1.3 Parameters

obi_num	0	Obi number	sched_exp_time	0.0	[s] Scheduled observation exposure time
ascdsver	8.4.5	Processing system revision	ontime	8281.5999692082	Sum of GTIs [s]
caldsver	4.5.0	 	ontime0	8281.5999692082	Sum of GTIs [s]
date	2012-07-02T06:39:59	Date and time of file creation	ontime1	8281.5999692082	Sum of GTIs [s]
revision	2	Processing version of data	ontime2	8281.5999692082	Sum of GTIs [s]
			ontime3	8281.5999692082	Sum of GTIs [s]
			ontime5	8281.5999692082	Sum of GTIs [s]
			ontime7	8281.5999692082	Sum of GTIs [s]
			l1events	832463	Number of level 1 events

2.1.4 Events

	ccd 0	ccd 1	ccd 2	ccd 3	ccd 5	ccd 7		ccd 0	ccd 1	ccd 2	ccd 3	ccd 5	ccd 7
level 1 events	121130	121644	126071	127960	174120	161538	grade 0 events	31689	30961	31626	32416	17919	16302
rejected events	61504	61738	67137	68273	71231	66945		26%	25%	25%	25%	10%	10%
rejected %	50%	50%	53%	53%	40%	41%	grade 1 events	243	188	214	253	249	142
								0%	0%	0%	0%	0%	0%
							grade 2 events	10809	11474	10317	10360	34897	20701
								8%	9%	8%	8%	20%	12%
							grade 3 events	4066	3940	4126	4042	4241	8501
								3%	3%	3%	3%	2%	5%
							grade 4 events	4030	3977	4146	4108	4156	8573
								3%	3%	3%	3%	2%	5%
							grade 5 events	3893	3934	3573	4313	9399	10555
								3%	3%	2%	3%	5%	6%
							grade 6 events	9032	9554	8752	8761	41714	40516
								7%	7%	6%	6%	23%	25%
							grade 7 events	57368	57616	63317	63707	61545	56248
								47%	47%	50%	49%	35%	34%

2.2 Compared Parameters

Parameter	Planned	Actual	Parameter	Planned	Actual
Instrument	ACIS	ACIS	Obspar format version number	7	7
Detector	ACIS-012357	ACIS-012357	Obspar file type	PREDICTED	ACTUAL
Grating	NONE	NONE	Obspar update status	NONE	UPDATED
Data mode	FAINT	FAINT	Number of optional ACIS chips dropped	0	0
Observation mode	SECONDARY	SECONDARY	On-chip summing requested	N	N
[deg] Pointing RA	0	310.9981112598324	Subarray requested	NONE	NONE
[deg] Pointing Dec	0	2.969975021360545	Alternating exposures requested	N	N
[deg] Pointing Roll	0.0	234.2591283622046	[s] Primary exposure time	3.2	3.2
[mm] SIM focus pos	-1.429586	-1.428180813131781			
[mm] SIM defocus	0.1037507710433287	0.1051558262725154			
[mm] SIM translation stage pos	250.455976	250.466033080201			
[mm] SIM translation stage offset	0	-0.01005468664627074			
[s] Observation start time (MET)	398900645.527336	398900644.50234			
Observation start date	2010-08-22T21:44:06	2010-08-22T21:44:04			
[s] Observation end time (MET)	398927141.778694	398927140.7537			
Observation end date	2010-08-23T05:05:42	2010-08-23T05:05:40			
Read mode	TIMED	TIMED			

2.3 Star Slots

2.4 FID Slots

A Summary

A.1 Status

V&V Scientist	Jen Lauer
V&V Date (YYYY-MM-DD)	2012.07.10
V&V Edition	1
V&V Disposition and Status	OK
V&V Charge Time	8.2815999692082

A.2 Comments