

# V&V Reference Report

## L2 ASCDS Version : 8.4.5

Observation 56057 - L2 Version 2  
Chandra X-Ray Center

L2 Processing Date : Jul 2 2012

## Contents

<b>1</b>	<b>Front</b>	<b>2</b>
<b>2</b>	<b>OBI</b>	<b>3</b>
2.1	OBI . . . . .	3
2.1.1	Images . . . . .	3
2.1.2	Bias . . . . .	3
2.1.3	Parameters . . . . .	4
2.1.4	Events . . . . .	4
2.2	Compared Parameters . . . . .	5
2.3	Star Slots . . . . .	6
2.4	FID Slots . . . . .	6
<b>A</b>	<b>Summary</b>	<b>7</b>
A.1	Status . . . . .	7
A.2	Comments . . . . .	7

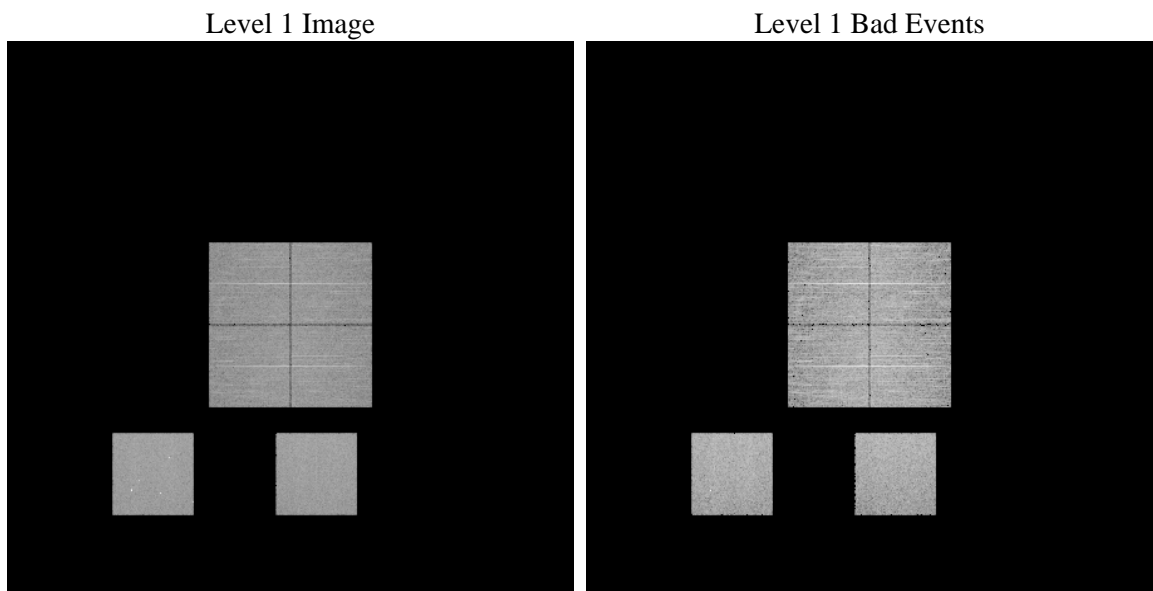
# 1 Front

seq_num	&#160	Sequence number
obs_id	56057	Observation id
title	ACIS-012357 diagnostics	Proposal title
observer	CHANDRA engineering request/realtime commanding	Principal investig
object	&#160	Source name
dtcycle	0	&#160
cycle	P	events from which exps? Prim/Second/Both
ra_targ	0.0	Observer's specified target RA [deg]
dec_targ	0.0	Observer's specified target Dec [deg]
ra_nom	347.71389004446	Nominal RA [deg]
dec_nom	-31.973789975394	Nominal Dec [deg]
roll_nom	32.950367588381	Nominal Roll [deg]
revision	2	Processing version of data
ontime	6531.199975729	Sum of GTIs [s]
livetime	6448.4979890198	Livetime [s]
ontime0	6531.199975729	Sum of GTIs [s]
ontime1	6531.199975729	Sum of GTIs [s]
ontime2	6531.199975729	Sum of GTIs [s]
ontime3	6531.199975729	Sum of GTIs [s]
ontime5	6531.199975729	Sum of GTIs [s]
ontime7	6531.199975729	Sum of GTIs [s]
l2events	322055	Number of level 2 events

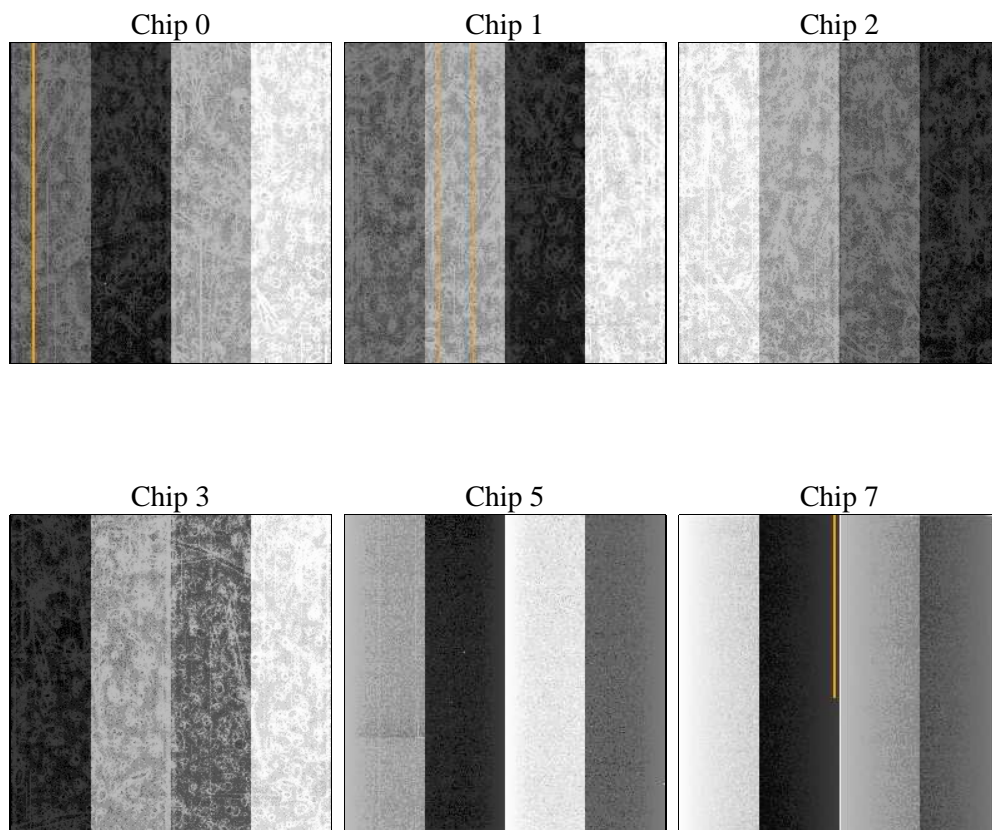
## 2 OBI

### 2.1 OBI

#### 2.1.1 Images



#### 2.1.2 Bias



### 2.1.3 Parameters

obi_num	0	Obi number	sched_exp_time	0.0	[s] Scheduled observation exposure time
ascdsver	8.4.5	Processing system revision	ontime	6531.199975729	Sum of GTIs [s]
caldsver	4.5.0	&#160	ontime0	6531.199975729	Sum of GTIs [s]
date	2012-07-02T07:30:38	Date and time of file creation	ontime1	6531.199975729	Sum of GTIs [s]
revision	2	Processing version of data	ontime2	6531.199975729	Sum of GTIs [s]
			ontime3	6531.199975729	Sum of GTIs [s]
			ontime5	6531.199975729	Sum of GTIs [s]
			ontime7	6531.199975729	Sum of GTIs [s]
			l1events	640936	Number of level 1 events

### 2.1.4 Events

	ccd 0	ccd 1	ccd 2	ccd 3	ccd 5	ccd 7		ccd 0	ccd 1	ccd 2	ccd 3	ccd 5	ccd 7
level 1 events	94420	96246	96932	100568	128028	124742	grade 0 events	24916	24708	25568	25735	10479	13160
rejected events	47246	48622	49546	52804	52470	50719		26%	25%	26%	25%	8%	10%
rejected %	50%	50%	51%	52%	40%	40%	grade 1 events	186	133	171	179	160	92
								0%	0%	0%	0%	0%	0%
							grade 2 events	8589	9209	8308	8407	26960	15898
								9%	9%	8%	8%	21%	12%
							grade 3 events	3280	3193	3370	3297	3265	6699
								3%	3%	3%	3%	2%	5%
							grade 4 events	3217	3097	3333	3356	3072	6726
								3%	3%	3%	3%	2%	5%
							grade 5 events	3034	2933	2768	3408	6831	8173
								3%	3%	2%	3%	5%	6%
							grade 6 events	7190	7450	6823	6989	31819	31578
								7%	7%	7%	6%	24%	25%
							grade 7 events	44008	45523	46591	49197	45442	42416
								46%	47%	48%	48%	35%	34%

## 2.2 Compared Parameters

Parameter	Planned	Actual	Parameter	Planned	Actual
Instrument	ACIS	ACIS	Obspar format version number	7	7
Detector	ACIS-012357	ACIS-012357	Obspar file type	PREDICTED	ACTUAL
Grating	NONE	NONE	Obspar update status	NONE	UPDATED
Data mode	FAINT	FAINT	Number of optional ACIS chips dropped	0	0
Observation mode	SECONDARY	SECONDARY	On-chip summing requested	N	N
[deg] Pointing RA	0	347.7138900444601	Subarray requested	NONE	NONE
[deg] Pointing Dec	0	-31.97378997539447	Alternating exposures requested	N	N
[deg] Pointing Roll	0.0	32.95036758838143	[s] Primary exposure time	3.2	3.2
[mm] SIM focus pos	-1.429586	-1.428180813131781			
[mm] SIM defocus	0.1037507710433287	0.1051558262725154			
[mm] SIM translation stage pos	250.455976	250.4635187648994			
[mm] SIM translation stage offset	0	-0.007540371344731511			
[s] Observation start time (MET)	399166665.840978	399166664.81597			
Observation start date	2010-08-25T23:37:46	2010-08-25T23:37:44			
[s] Observation end time (MET)	399175095.44141	399175094.4164			
Observation end date	2010-08-26T01:58:15	2010-08-26T01:58:14			
Read mode	TIMED	TIMED			

## **2.3 Star Slots**

## **2.4 FID Slots**

## **A Summary**

### **A.1 Status**

V&V Scientist	Jen Lauer
V&V Date (YYYY-MM-DD)	2012.07.10
V&V Edition	1
V&V Disposition and Status	OK
V&V Charge Time	6.531199975729

### **A.2 Comments**