

V&V Reference Report

L2 ASCDS Version : 8.4.5

Observation 55998 - L2 Version 2
Chandra X-Ray Center

L2 Processing Date : Jul 4 2012

Contents

1	Front	2
2	OBI	3
2.1	OBI	3
2.1.1	Images	3
2.1.2	Bias	3
2.1.3	Parameters	4
2.1.4	Events	4
2.2	Compared Parameters	5
2.3	Star Slots	6
2.4	FID Slots	6
A	Summary	7
A.1	Status	7
A.2	Comments	7

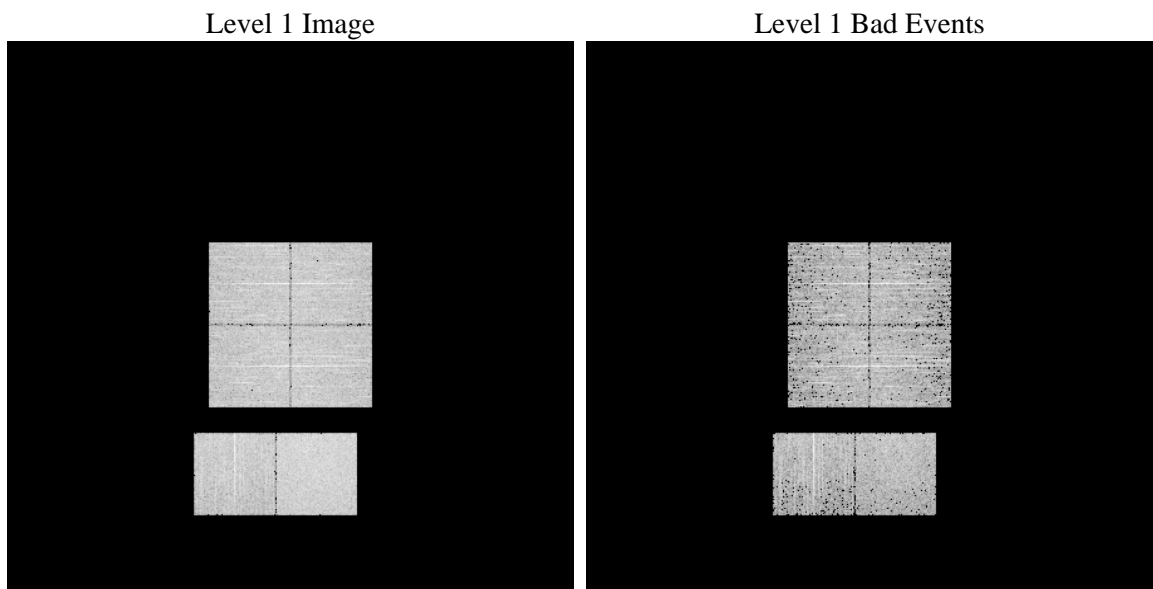
1 Front

seq_num	 	Sequence number
obs_id	55998	Observation id
title	ACIS-012367 diagnostics	Proposal title
observer	CHANDRA engineering request/realtime commanding	Principal investig
object	 	Source name
dtcycle	0	
cycle	P	events from which exps? Prim/Second/Both
ra_targ	0.0	Observer's specified target RA [deg]
dec_targ	0.0	Observer's specified target Dec [deg]
ra_nom	275.02220926858	Nominal RA [deg]
dec_nom	-45.323786351748	Nominal Dec [deg]
roll_nom	270.43774745153	Nominal Roll [deg]
revision	2	Processing version of data
ontime	3292.799987793	Sum of GTIs [s]
livetime	3251.1045716614	Livetime [s]
ontime0	3292.799987793	Sum of GTIs [s]
ontime1	3292.799987793	Sum of GTIs [s]
ontime2	3292.799987793	Sum of GTIs [s]
ontime3	3292.799987793	Sum of GTIs [s]
ontime6	3292.799987793	Sum of GTIs [s]
ontime7	3292.799987793	Sum of GTIs [s]
l2events	144800	Number of level 2 events

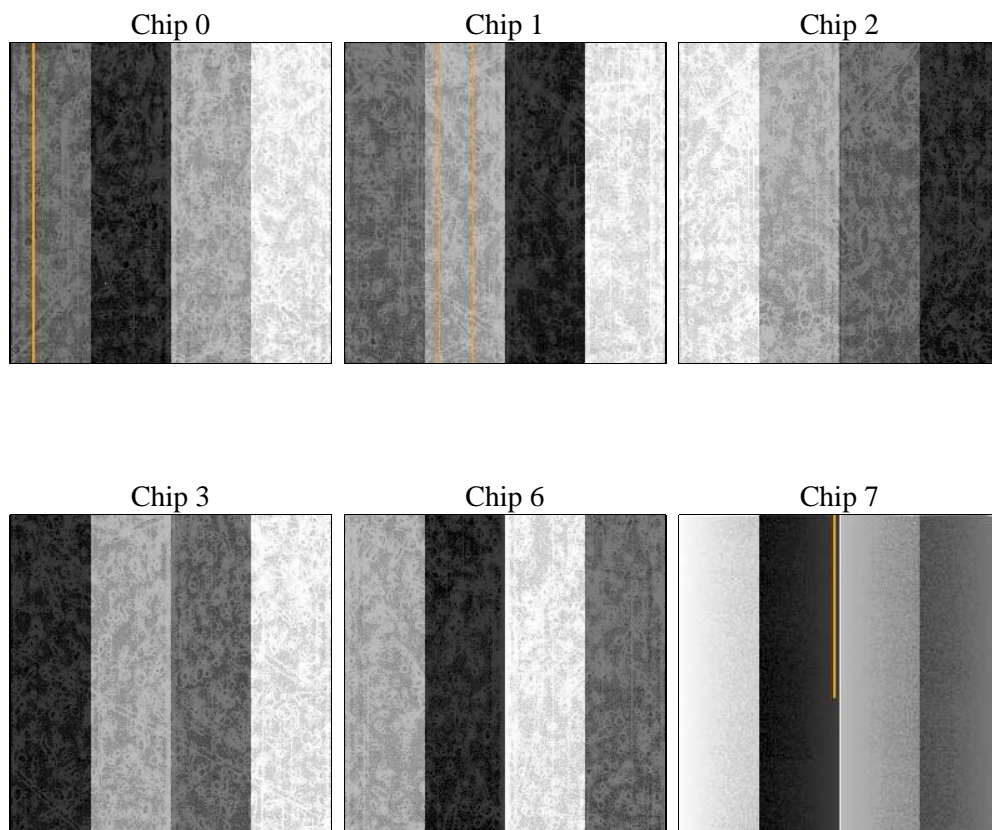
2 OBI

2.1 OBI

2.1.1 Images



2.1.2 Bias



2.1.3 Parameters

obi_num	0	Obi number	sched_exp_time	0.0	[s] Scheduled observation exposure time
ascdsver	8.4.5	Processing system revision	ontime	3292.799987793	Sum of GTIs [s]
caldsver	4.5.0	 	ontime0	3292.799987793	Sum of GTIs [s]
date	2012-07-04T06:07:23	Date and time of file creation	ontime1	3292.799987793	Sum of GTIs [s]
revision	2	Processing version of data	ontime2	3292.799987793	Sum of GTIs [s]
			ontime3	3292.799987793	Sum of GTIs [s]
			ontime6	3292.799987793	Sum of GTIs [s]
			ontime7	3292.799987793	Sum of GTIs [s]
			l1events	303772	Number of level 1 events

2.1.4 Events

	ccd 0	ccd 1	ccd 2	ccd 3	ccd 6	ccd 7		ccd 0	ccd 1	ccd 2	ccd 3	ccd 6	ccd 7
level 1 events	47132	47396	48051	49204	49223	62766	grade 0 events	11985	12117	12431	12363	12370	6528
rejected events	24220	24035	24928	26091	25341	25957		25%	25%	25%	25%	25%	10%
rejected %	51%	50%	51%	53%	51%	41%	grade 1 events	75	79	99	103	62	62
								0%	0%	0%	0%	0%	0%
							grade 2 events	4345	4413	4095	4159	4319	7898
								9%	9%	8%	8%	8%	12%
							grade 3 events	1547	1547	1553	1631	1527	3361
								3%	3%	3%	3%	3%	5%
							grade 4 events	1574	1552	1672	1625	1593	3346
								3%	3%	3%	3%	3%	5%
							grade 5 events	1536	1436	1385	1607	1587	4099
								3%	3%	2%	3%	3%	6%
							grade 6 events	3486	3754	3398	3357	4100	15720
								7%	7%	7%	6%	8%	25%
							grade 7 events	22584	22498	23418	24359	23665	21752
								47%	47%	48%	49%	48%	34%

2.2 Compared Parameters

Parameter	Planned	Actual	Parameter	Planned	Actual
Instrument	ACIS	ACIS	Obspar format version number	7	7
Detector	ACIS-012367	ACIS-012367	Obspar file type	PREDICTED	ACTUAL
Grating	NONE	NONE	Obspar update status	NONE	UPDATED
Data mode	FAINT	FAINT	Number of optional ACIS chips dropped	0	0
Observation mode	SECONDARY	SECONDARY	On-chip summing requested	N	N
[deg] Pointing RA	0	275.0222092685783	Subarray requested	NONE	NONE
[deg] Pointing Dec	0	-45.32378635174828	Alternating exposures requested	N	N
[deg] Pointing Roll	0.0	270.4377474515276	[s] Primary exposure time	3.2	3.2
[mm] SIM focus pos	-1.429586	-1.428180813131781			
[mm] SIM defocus	0.1037507710433287	0.1051558262725154			
[mm] SIM translation stage pos	250.455976	250.466033080201			
[mm] SIM translation stage offset	0	-0.01005468664627074			
[s] Observation start time (MET)	402365613.105082	402365612.08008			
Observation start date	2010-10-02T00:13:33	2010-10-02T00:13:32			
[s] Observation end time (MET)	402369905.805303	402369904.7803			
Observation end date	2010-10-02T01:25:06	2010-10-02T01:25:04			
Read mode	TIMED	TIMED			

2.3 Star Slots

2.4 FID Slots

A Summary

A.1 Status

V&V Scientist	Jen Lauer
V&V Date (YYYY-MM-DD)	2012.07.12
V&V Edition	1
V&V Disposition and Status	OK
V&V Charge Time	3.292799987793

A.2 Comments