

V&V Reference Report

L2 ASCDS Version : 8.4.5

Observation 55828 - L2 Version 3
Chandra X-Ray Center

L2 Processing Date : Jul 9 2012

Contents

1	Front	2
2	OBI	3
2.1	OBI	3
2.1.1	Images	3
2.1.2	Bias	3
2.1.3	Parameters	4
2.1.4	Events	4
2.2	Compared Parameters	5
2.3	Star Slots	6
2.4	FID Slots	6
A	Summary	7
A.1	Status	7
A.2	Comments	7

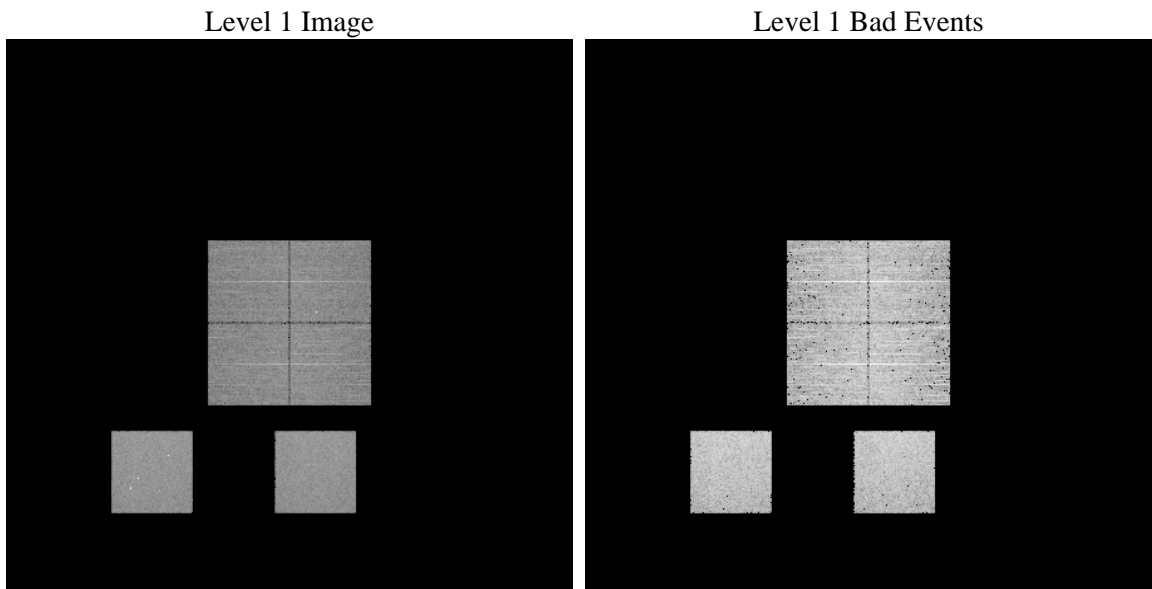
1 Front

seq_num	 	Sequence number
obs_id	55828	Observation id
title	ACIS-012357 diagnostics	Proposal title
observer	CHANDRA engineering request/realtime commanding	Principal investig
object	 	Source name
dtcycle	0	
cycle	P	events from which exps? Prim/Second/Both
ra_targ	0.0	Observer's specified target RA [deg]
dec_targ	0.0	Observer's specified target Dec [deg]
ra_nom	260.08074723275	Nominal RA [deg]
dec_nom	22.705479521506	Nominal Dec [deg]
roll_nom	310.70514834405	Nominal Roll [deg]
revision	3	Processing version of data
ontime	4527.8162924051	Sum of GTIs [s]
livetime	4470.482356187	Livetime [s]
ontime0	4527.7752524018	Sum of GTIs [s]
ontime1	4527.7342123985	Sum of GTIs [s]
ontime2	4527.6931723952	Sum of GTIs [s]
ontime3	4527.8573324084	Sum of GTIs [s]
ontime5	4527.6521323919	Sum of GTIs [s]
ontime7	4527.8162924051	Sum of GTIs [s]
l2events	213098	Number of level 2 events

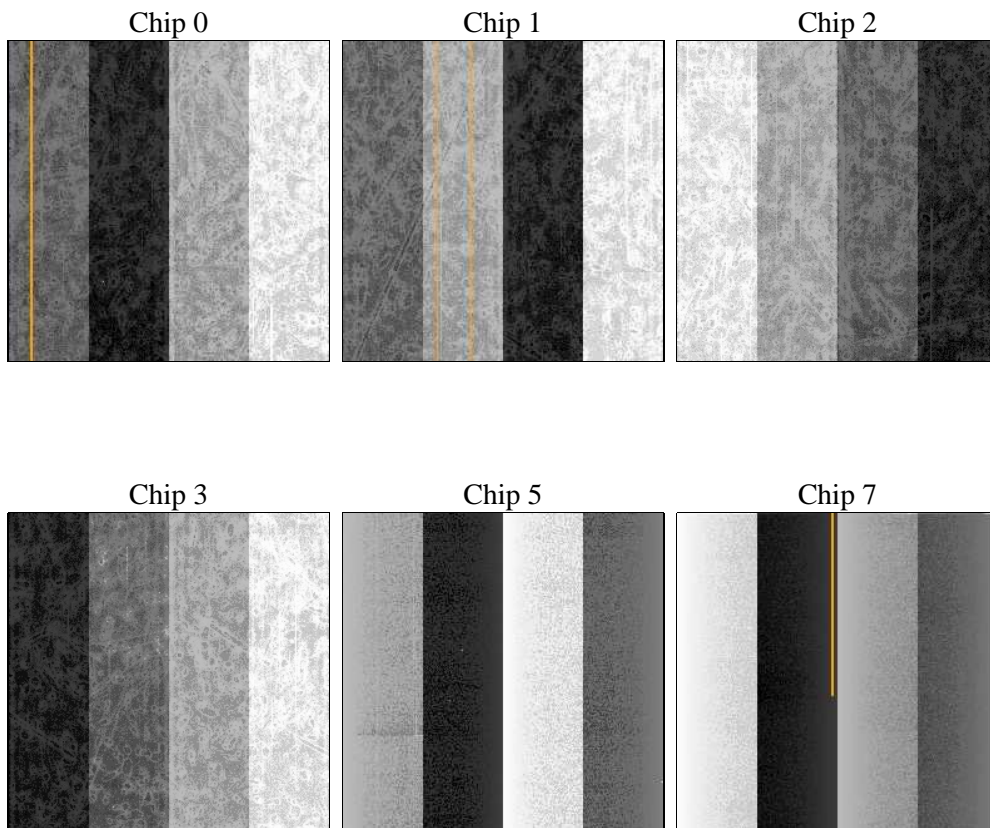
2 OBI

2.1 OBI

2.1.1 Images



2.1.2 Bias



2.1.3 Parameters

obi_num	0	Obi number	sched_exp_time	0.0	[s] Scheduled observation exposure time
ascdsver	8.4.5	Processing system revision	ontime	4527.8162924051	Sum of GTIs [s]
caldbver	4.5.0	 	ontime0	4527.7752524018	Sum of GTIs [s]
date	2012-07-09T13:24:47	Date and time of file creation	ontime1	4527.7342123985	Sum of GTIs [s]
revision	3	Processing version of data	ontime2	4527.6931723952	Sum of GTIs [s]
			ontime3	4527.8573324084	Sum of GTIs [s]
			ontime5	4527.6521323919	Sum of GTIs [s]
			ontime7	4527.8162924051	Sum of GTIs [s]
			l1events	436758	Number of level 1 events

2.1.4 Events

	ccd 0	ccd 1	ccd 2	ccd 3	ccd 5	ccd 7		ccd 0	ccd 1	ccd 2	ccd 3	ccd 5	ccd 7
level 1 events	62141	65181	65069	68513	89537	86317	grade 0 events	16299	17275	16797	16974	8638	8663
rejected events	31532	32999	33979	37400	37173	36861		26%	26%	25%	24%	9%	10%
rejected %	50%	50%	52%	54%	41%	42%	grade 1 events	113	109	118	114	119	81
								0%	0%	0%	0%	0%	0%
							grade 2 events	5727	6189	5678	5606	18184	11207
								9%	9%	8%	8%	20%	12%
							grade 3 events	2135	2164	2162	2244	2135	4530
								3%	3%	3%	3%	2%	5%
							grade 4 events	2113	2085	2200	2186	2163	4670
								3%	3%	3%	3%	2%	5%
							grade 5 events	2036	2175	1980	2293	4812	5854
								3%	3%	3%	3%	5%	6%
							grade 6 events	4759	5004	4727	4552	22011	21186
								7%	7%	7%	6%	24%	24%
							grade 7 events	28959	30180	31407	34544	31475	30126
								46%	46%	48%	50%	35%	34%

2.2 Compared Parameters

Parameter	Planned	Actual
Instrument	ACIS	ACIS
Detector	ACIS-012357	ACIS-012357
Grating	NONE	NONE
Data mode	FAINT	FAINT
Observation mode	SECONDARY	SECONDARY
[deg] Pointing RA	0	260.0807472327496
[deg] Pointing Dec	0	22.7054795215062
[deg] Pointing Roll	0.0	310.7051483440484
[mm] SIM focus pos	-1.4281808131	-1.4281808131
[mm] SIM defocus	0.1051557500557434	0.1051557500557434
[mm] SIM translation stage pos	250.4660330802	250.4660330802
[mm] SIM translation stage offset	-0.01005726120527584	-0.01005726120527584
[s] Observation start time (MET)	407813611.385532	407813611.385532
Observation start date	2010-12-04T01:33:31	2010-12-04T01:33:31
[s] Observation end time (MET)	407819469.708524	407819469.708524
Observation end date	2010-12-04T03:11:10	2010-12-04T03:11:09
Read mode	TIMED	TIMED

Parameter	Planned	Actual
Obspar format version number	7	7
Obspar file type	PREDICTED	ACTUAL
Obspar update status	OVERRIDE	OVERRIDE
Number of optional ACIS chips dropped	0	0
On-chip summing requested	N	N
Subarray requested	NONE	NONE
Alternating exposures requested	N	N
[s] Primary exposure time	3.2	3.2

2.3 Star Slots

2.4 FID Slots

A Summary

A.1 Status

V&V Scientist	Beth Sundheim
V&V Date (YYYY-MM-DD)	2012.07.12
V&V Edition	1
V&V Disposition and Status	OK
V&V Charge Time	4.5278162924051

A.2 Comments

A spatial region of the original bias map for CCD = 1 suffered from anomalously high data values. Pixels in the event data that were bias-corrected by one of the original affected bias pixels may have an apparent energy shift. While the change in energy is expected to be small (~20 eV), it depends on many parameters that have not yet been fully explored for this bias anomaly. The bias map for CCD = 1 has been reconstructed for this processing to remove this anomaly using scaled data from a comparable bias map from another observation.