

# V&V Reference Report

## L2 ASCDS Version : 8.4.5

Observation 55776 - L2 Version 2  
Chandra X-Ray Center

L2 Processing Date : Jul 8 2012

## Contents

<b>1</b>	<b>Front</b>	<b>2</b>
<b>2</b>	<b>OBI</b>	<b>3</b>
2.1	OBI . . . . .	3
2.1.1	Images . . . . .	3
2.1.2	Bias . . . . .	3
2.1.3	Parameters . . . . .	4
2.1.4	Events . . . . .	4
2.2	Compared Parameters . . . . .	5
2.3	Star Slots . . . . .	6
2.4	FID Slots . . . . .	6
<b>A</b>	<b>Summary</b>	<b>7</b>
A.1	Status . . . . .	7
A.2	Comments . . . . .	7

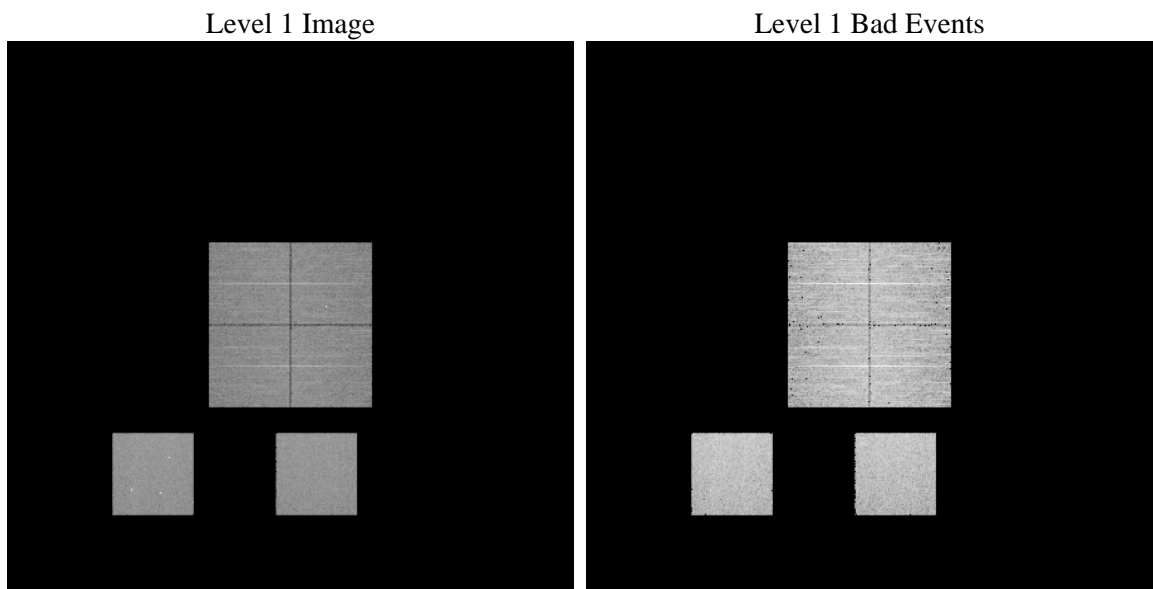
# 1 Front

seq_num	&#160	Sequence number
obs_id	55776	Observation id
title	ACIS-012357 diagnostics	Proposal title
observer	CHANDRA engineering request/realtime commanding	Principal investig
object	&#160	Source name
dtcycle	0	&#160
cycle	P	events from which exps? Prim/Second/Both
ra_targ	0.0	Observer's specified target RA [deg]
dec_targ	0.0	Observer's specified target Dec [deg]
ra_nom	277.01512786	Nominal RA [deg]
dec_nom	29.016880449293	Nominal Dec [deg]
roll_nom	359.29284075421	Nominal Roll [deg]
revision	2	Processing version of data
ontime	6161.7964850664	Sum of GTIs [s]
livetime	6083.7721077841	Livetime [s]
ontime0	6161.7554450631	Sum of GTIs [s]
ontime1	6161.7144050598	Sum of GTIs [s]
ontime2	6161.6733650565	Sum of GTIs [s]
ontime3	6161.8375250697	Sum of GTIs [s]
ontime5	6161.6323250532	Sum of GTIs [s]
ontime7	6161.7964850664	Sum of GTIs [s]
l2events	284066	Number of level 2 events

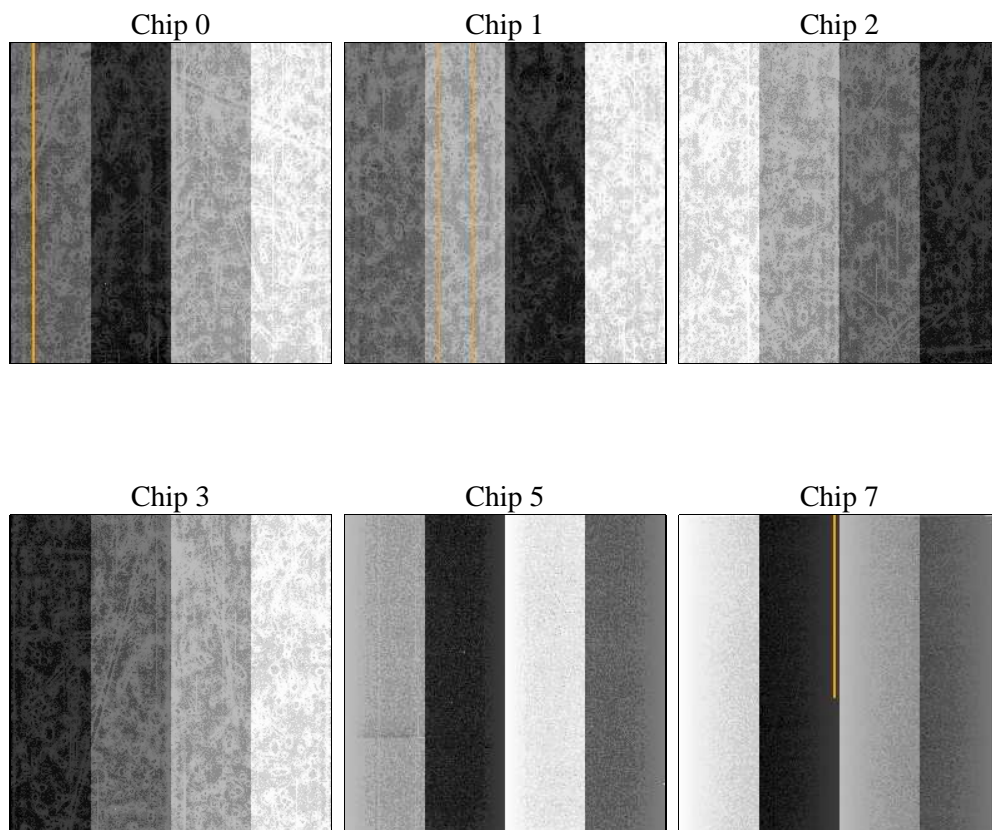
## 2 OBI

### 2.1 OBI

#### 2.1.1 Images



#### 2.1.2 Bias



### 2.1.3 Parameters

obi_num	0	Obi number	sched_exp_time	0.0	[s] Scheduled observation exposure time
ascdsver	8.4.5	Processing system revision	ontime	6161.7964850664	Sum of GTIs [s]
caldsver	4.5.0	&#160	ontime0	6161.7554450631	Sum of GTIs [s]
date	2012-07-08T22:54:18	Date and time of file creation	ontime1	6161.7144050598	Sum of GTIs [s]
revision	2	Processing version of data	ontime2	6161.6733650565	Sum of GTIs [s]
			ontime3	6161.8375250697	Sum of GTIs [s]
			ontime5	6161.6323250532	Sum of GTIs [s]
			ontime7	6161.7964850664	Sum of GTIs [s]
			l1events	577978	Number of level 1 events

### 2.1.4 Events

	ccd 0	ccd 1	ccd 2	ccd 3	ccd 5	ccd 7		ccd 0	ccd 1	ccd 2	ccd 3	ccd 5	ccd 7
level 1 events	86843	86730	85337	88732	117365	112971	grade 0 events	21792	22580	22172	22615	10230	11538
rejected events	45388	43869	44225	47044	48461	47029		25%	26%	25%	25%	8%	10%
rejected %	52%	50%	51%	53%	41%	41%	grade 1 events	133	119	155	140	198	93
								0%	0%	0%	0%	0%	0%
							grade 2 events	7753	8119	7313	7312	24259	14242
								8%	9%	8%	8%	20%	12%
							grade 3 events	2801	2829	2871	2805	2739	6018
								3%	3%	3%	3%	2%	5%
							grade 4 events	2750	2751	2774	2863	2687	5963
								3%	3%	3%	3%	2%	5%
							grade 5 events	2898	2867	2684	3053	6161	7714
								3%	3%	3%	3%	5%	6%
							grade 6 events	6378	6613	5997	6111	29029	28209
								7%	7%	7%	6%	24%	24%
							grade 7 events	42338	40852	41371	43833	42062	39194
								48%	47%	48%	49%	35%	34%

## 2.2 Compared Parameters

Parameter	Planned	Actual	Parameter	Planned	Actual
Instrument	ACIS	ACIS	Obspar format version number	7	7
Detector	ACIS-012357	ACIS-012357	Obspar file type	PREDICTED	ACTUAL
Grating	NONE	NONE	Obspar update status	NONE	UPDATED
Data mode	FAINT	FAINT	Number of optional ACIS chips dropped	0	0
Observation mode	SECONDARY	SECONDARY	On-chip summing requested	N	N
[deg] Pointing RA	0	277.0151278599969	Subarray requested	NONE	NONE
[deg] Pointing Dec	0	29.01688044929308	Alternating exposures requested	N	N
[deg] Pointing Roll	0.0	359.2928407542134	[s] Primary exposure time	3.2	3.2
[mm] SIM focus pos	-1.429586	-1.428180813131781			
[mm] SIM defocus	0.1037507710433287	0.1051558262725154			
[mm] SIM translation stage pos	250.455976	250.466033080201			
[mm] SIM translation stage offset	0	-0.01005468664627074			
[s] Observation start time (MET)	409868765.191568	409868764.16657			
Observation start date	2010-12-27T20:26:05	2010-12-27T20:26:04			
[s] Observation end time (MET)	409882670.342286	409882669.31729			
Observation end date	2010-12-28T00:17:50	2010-12-28T00:17:49			
Read mode	TIMED	TIMED			

## **2.3 Star Slots**

## **2.4 FID Slots**

## A Summary

### A.1 Status

V&V Scientist	Jen Lauer
V&V Date (YYYY-MM-DD)	2012.07.18
V&V Edition	1
V&V Disposition and Status	OK
V&V Charge Time	6.1617964850664

### A.2 Comments