

V&V Reference Report

L2 ASCDS Version : 8.4.4

Observation 57364 - L2 Version 2
Chandra X-Ray Center

L2 Processing Date : May 30 2012

Contents

1	Front	2
2	OBI	3
2.1	OBI	3
2.1.1	Images	3
2.1.2	Bias	3
2.1.3	Parameters	4
2.1.4	Events	4
2.2	Compared Parameters	5
2.3	Star Slots	6
2.4	FID Slots	6
A	Summary	7
A.1	Status	7
A.2	Comments	7

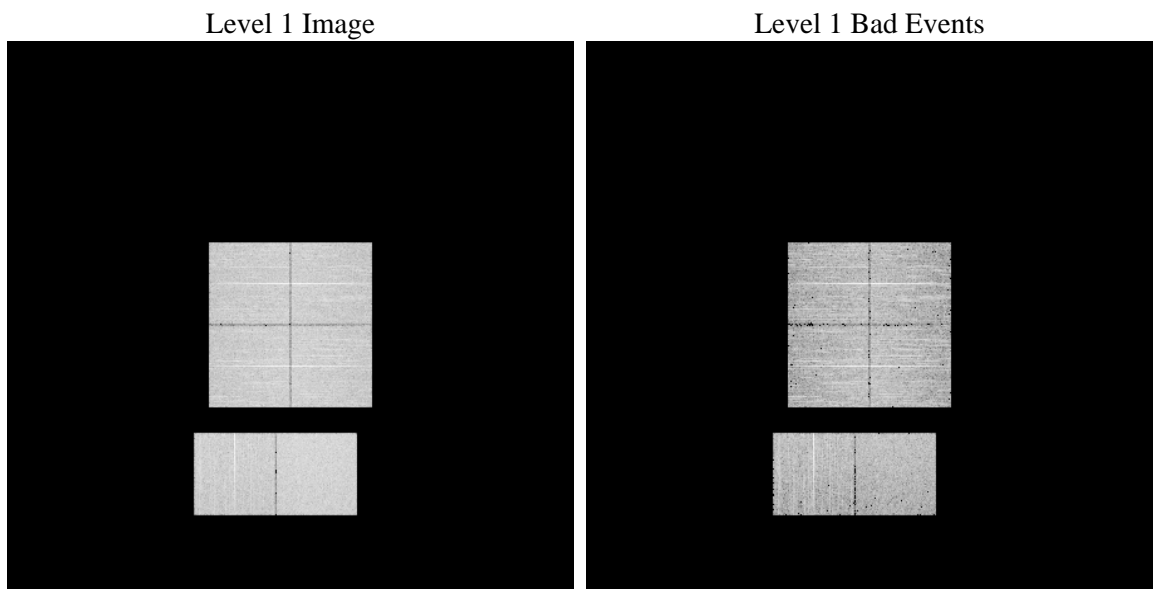
1 Front

seq_num	 	Sequence number
obs_id	57364	Observation id
title	ACIS-012367 diagnostics	Proposal title
observer	CHANDRA engineering request/realtime commanding	Principal investig
object	 	Source name
dtcycle	0	
cycle	P	events from which exps? Prim/Second/Both
ra_targ	0.0	Observer's specified target RA [deg]
dec_targ	0.0	Observer's specified target Dec [deg]
ra_nom	119.03810585813	Nominal RA [deg]
dec_nom	-4.0071473149842	Nominal Dec [deg]
roll_nom	350.98855984707	Nominal Roll [deg]
revision	2	Processing version of data
ontime	4694.3999825716	Sum of GTIs [s]
livetime	4634.956663364	Livetime [s]
ontime0	4694.3999825716	Sum of GTIs [s]
ontime1	4694.3999825716	Sum of GTIs [s]
ontime2	4694.3999825716	Sum of GTIs [s]
ontime3	4694.3999825716	Sum of GTIs [s]
ontime6	4694.3999825716	Sum of GTIs [s]
ontime7	4694.3999825716	Sum of GTIs [s]
l2events	298028	Number of level 2 events

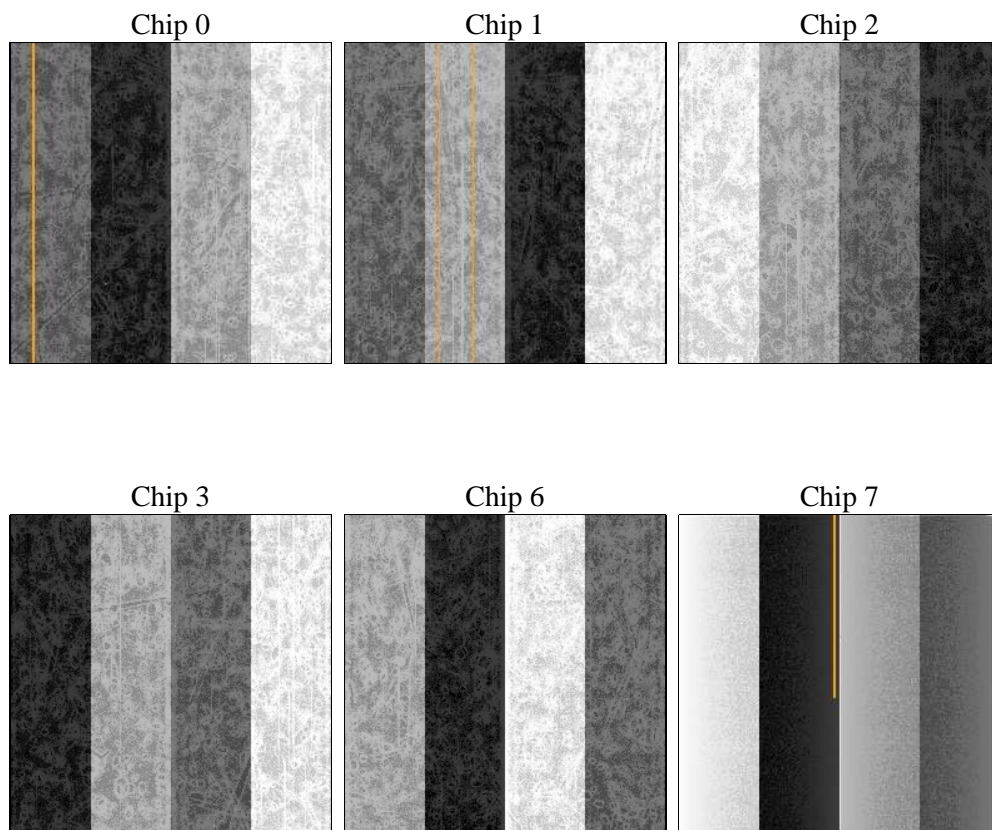
2 OBI

2.1 OBI

2.1.1 Images



2.1.2 Bias



2.1.3 Parameters

obi_num	0	Obi number	sched_exp_time	0.0	[s] Scheduled observation exposure time
ascdsver	8.4.4	Processing system revision	ontime	4694.3999825716	Sum of GTIs [s]
caldbver	4.4.9	 	ontime0	4694.3999825716	Sum of GTIs [s]
date	2012-05-30T05:03:10	Date and time of file creation	ontime1	4694.3999825716	Sum of GTIs [s]
revision	2	Processing version of data	ontime2	4694.3999825716	Sum of GTIs [s]
			ontime3	4694.3999825716	Sum of GTIs [s]
			ontime6	4694.3999825716	Sum of GTIs [s]
			ontime7	4694.3999825716	Sum of GTIs [s]
			l1events	567253	Number of level 1 events

2.1.4 Events

	ccd 0	ccd 1	ccd 2	ccd 3	ccd 6	ccd 7		ccd 0	ccd 1	ccd 2	ccd 3	ccd 6	ccd 7
level 1 events	89223	89156	91877	93937	94073	108987	grade 0 events	25724	25382	26501	26711	26766	13567
rejected events	41091	40515	43376	45067	43110	39084		28%	28%	28%	28%	28%	12%
rejected %	46%	45%	47%	47%	45%	35%	grade 1 events	206	152	214	204	155	106
								0%	0%	0%	0%	0%	0%
							grade 2 events	8677	9085	8410	8511	8988	15206
								9%	10%	9%	9%	9%	13%
							grade 3 events	3217	3271	3296	3346	3331	6509
								3%	3%	3%	3%	3%	5%
							grade 4 events	3263	3250	3225	3267	3346	6444
								3%	3%	3%	3%	3%	5%
							grade 5 events	2305	2373	2213	2603	2515	6424
								2%	2%	2%	2%	2%	5%
							grade 6 events	7251	7653	7069	7035	8532	28177
								8%	8%	7%	7%	9%	25%
							grade 7 events	38580	37990	40949	42260	40440	32554
								43%	42%	44%	44%	42%	29%

2.2 Compared Parameters

Parameter	Planned	Actual	Parameter	Planned	Actual
Instrument	ACIS	ACIS	Obspar format version number	7	7
Detector	ACIS-012367	ACIS-012367	Obspar file type	PREDICTED	ACTUAL
Grating	NONE	NONE	Obspar update status	NONE	UPDATED
Data mode	FAINT	FAINT	Number of optional ACIS chips dropped	0	0
Observation mode	SECONDARY	SECONDARY	On-chip summing requested	N	N
[deg] Pointing RA	0	119.038105858129	Subarray requested	NONE	NONE
[deg] Pointing Dec	0	-4.007147314984202	Alternating exposures requested	N	N
[deg] Pointing Roll	0.0	350.9885598470708	[s] Primary exposure time	3.2	3.2
[mm] SIM focus pos	-1.429586	-0.6828225247311905			
[mm] SIM defocus	0.1037507710433287	0.8505141146731063			
[mm] SIM translation stage pos	250.455976	250.466033080201			
[mm] SIM translation stage offset	0	-0.01005468664627074			
[s] Observation start time (MET)	348860938.407065	348860937.38205			
Observation start date	2009-01-20T17:48:58	2009-01-20T17:48:57			
[s] Observation end time (MET)	348868371.707433	348868370.68242			
Observation end date	2009-01-20T19:52:52	2009-01-20T19:52:50			
Read mode	TIMED	TIMED			

2.3 Star Slots

2.4 FID Slots

A Summary

A.1 Status

V&V Scientist	Beth Sundheim
V&V Date (YYYY-MM-DD)	2012.06.04
V&V Edition	1
V&V Disposition and Status	OK
V&V Charge Time	4.6943999825716

A.2 Comments