

V&V Reference Report

L2 ASCDS Version : 8.4.4

Observation 57357 - L2 Version 2
Chandra X-Ray Center

L2 Processing Date : May 30 2012

Contents

1	Front	2
2	OBI	3
2.1	OBI	3
2.1.1	Images	3
2.1.2	Bias	3
2.1.3	Parameters	4
2.1.4	Events	4
2.2	Compared Parameters	5
2.3	Star Slots	6
2.4	FID Slots	6
A	Summary	7
A.1	Status	7
A.2	Comments	7

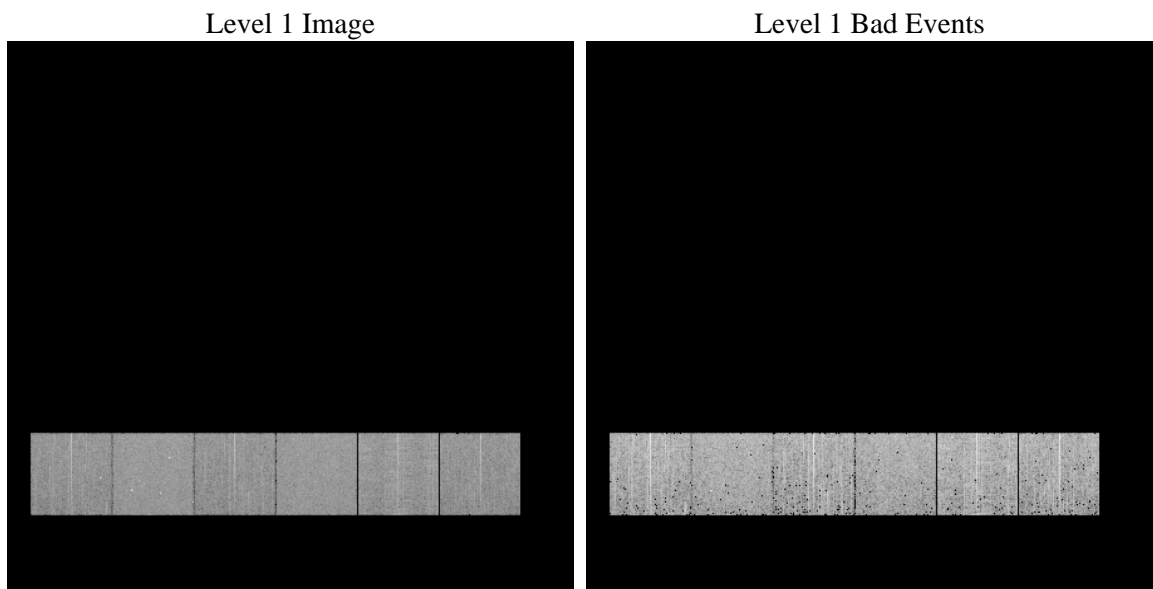
1 Front

seq_num	 	Sequence number
obs_id	57357	Observation id
title	ACIS-456789 diagnostics	Proposal title
observer	CHANDRA engineering request/realtime commanding	Principal investig
object	 	Source name
dtcycle	0	
cycle	P	events from which exps? Prim/Second/Both
ra_targ	0.0	Observer's specified target RA [deg]
dec_targ	0.0	Observer's specified target Dec [deg]
ra_nom	119.02160862651	Nominal RA [deg]
dec_nom	-3.9906727195353	Nominal Dec [deg]
roll_nom	344.51256228993	Nominal Roll [deg]
revision	2	Processing version of data
ontime	3269.3477931023	Sum of GTIs [s]
livetime	3227.9493427811	Livetime [s]
ontime4	3269.4709131122	Sum of GTIs [s]
ontime5	3269.3888331056	Sum of GTIs [s]
ontime6	3269.4298631549	Sum of GTIs [s]
ontime7	3269.3477931023	Sum of GTIs [s]
ontime8	3270.3999878764	Sum of GTIs [s]
ontime9	3269.306743145	Sum of GTIs [s]
l2events	219995	Number of level 2 events

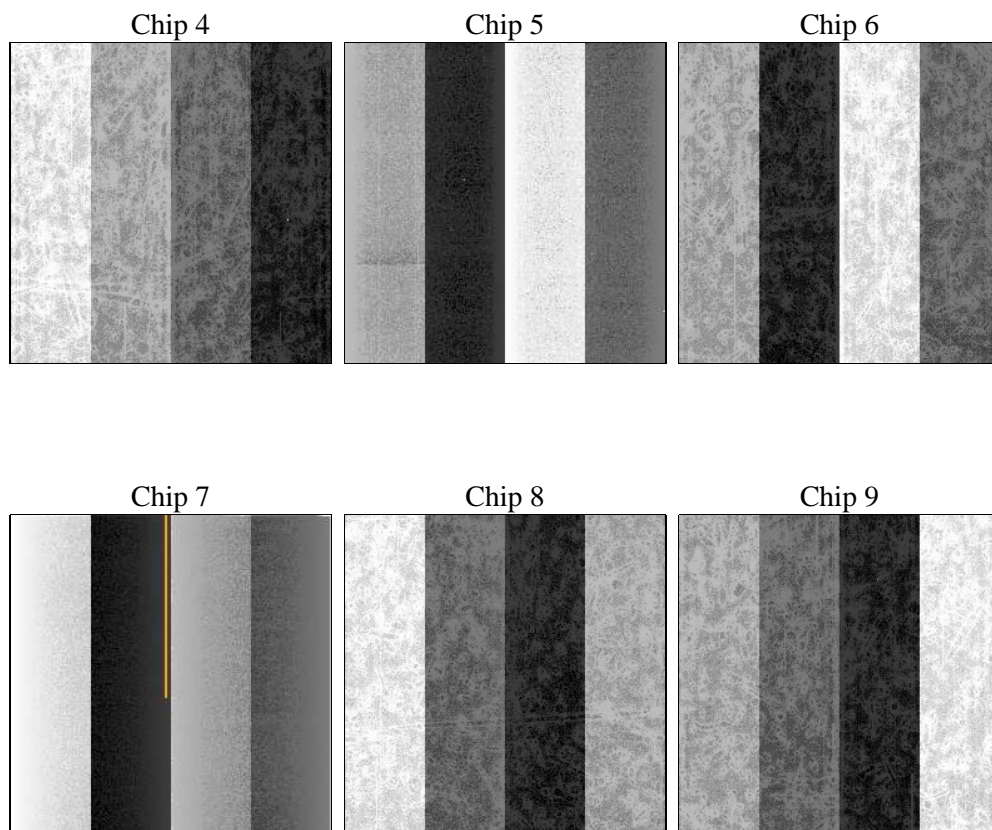
2 OBI

2.1 OBI

2.1.1 Images



2.1.2 Bias



2.1.3 Parameters

obi_num	0	Obi number	sched_exp_time	0.0	[s] Scheduled observation exposure time
ascdsver	8.4.4	Processing system revision	ontime	3269.3477931023	Sum of GTIs [s]
caldsver	4.4.9	 	ontime4	3269.4709131122	Sum of GTIs [s]
date	2012-05-30T07:13:40	Date and time of file creation	ontime5	3269.3888331056	Sum of GTIs [s]
revision	2	Processing version of data	ontime6	3269.4298631549	Sum of GTIs [s]
			ontime7	3269.3477931023	Sum of GTIs [s]
			ontime8	3270.3999878764	Sum of GTIs [s]
			ontime9	3269.306743145	Sum of GTIs [s]
			l1events	429082	Number of level 1 events

2.1.4 Events

	ccd 4	ccd 5	ccd 6	ccd 7	ccd 8	ccd 9		ccd 4	ccd 5	ccd 6	ccd 7	ccd 8	ccd 9
level 1 events	66274	78979	65950	76733	76426	64720	grade 0 events	18954	8036	18362	9112	20471	17921
rejected events	32960	29843	31023	28495	35546	30941		28%	10%	27%	11%	26%	27%
rejected %	49%	37%	47%	37%	46%	47%	grade 1 events	188	120	110	63	145	120
								0%	0%	0%	0%	0%	0%
							grade 2 events	5460	17382	6236	10458	7605	5974
								8%	22%	9%	13%	9%	9%
							grade 3 events	2275	2323	2345	4505	2981	2365
								3%	2%	3%	5%	3%	3%
							grade 4 events	2294	2244	2185	4554	2870	2217
								3%	2%	3%	5%	3%	3%
							grade 5 events	1626	4101	1758	4563	2291	1923
								2%	5%	2%	5%	2%	2%
							grade 6 events	4331	19151	5799	19609	6988	5302
								6%	24%	8%	25%	9%	8%
							grade 7 events	31146	25622	29155	23869	33075	28898
								46%	32%	44%	31%	43%	44%

2.2 Compared Parameters

Parameter	Planned	Actual	Parameter	Planned	Actual
Instrument	ACIS	ACIS	Obspar format version number	7	7
Detector	ACIS-456789	ACIS-456789	Obspar file type	PREDICTED	ACTUAL
Grating	NONE	NONE	Obspar update status	NONE	UPDATED
Data mode	FAINT	FAINT	Number of optional ACIS chips dropped	0	0
Observation mode	SECONDARY	SECONDARY	On-chip summing requested	N	N
[deg] Pointing RA	0	119.0216086265074	Subarray requested	NONE	NONE
[deg] Pointing Dec	0	-3.990672719535275	Alternating exposures requested	N	N
[deg] Pointing Roll	0.0	344.5125622899301	[s] Primary exposure time	3.2	3.2
[mm] SIM focus pos	-1.429586	-0.7809083437167272			
[mm] SIM defocus	0.1037507710433287	0.7524282956875696			
[mm] SIM translation stage pos	250.455976	250.466033080201			
[mm] SIM translation stage offset	0	-0.01005468664627074			
[s] Observation start time (MET)	349090991.468462	349090990.44343			
Observation start date	2009-01-23T09:43:11	2009-01-23T09:43:10			
[s] Observation end time (MET)	349098193.118819	349098192.09379			
Observation end date	2009-01-23T11:43:13	2009-01-23T11:43:12			
Read mode	TIMED	TIMED			

2.3 Star Slots

2.4 FID Slots

A Summary

A.1 Status

V&V Scientist	Jen Lauer
V&V Date (YYYY-MM-DD)	2012.06.04
V&V Edition	1
V&V Disposition and Status	OK
V&V Charge Time	3.2693477931023

A.2 Comments