

V&V Reference Report

L2 ASCDS Version : 8.4.4

Observation 57338 - L2 Version 2
Chandra X-Ray Center

L2 Processing Date : May 30 2012

Contents

1	Front	2
2	OBI	3
2.1	OBI	3
2.1.1	Images	3
2.1.2	Bias	3
2.1.3	Parameters	4
2.1.4	Events	4
2.2	Compared Parameters	5
2.3	Star Slots	6
2.4	FID Slots	6
A	Summary	7
A.1	Status	7
A.2	Comments	7

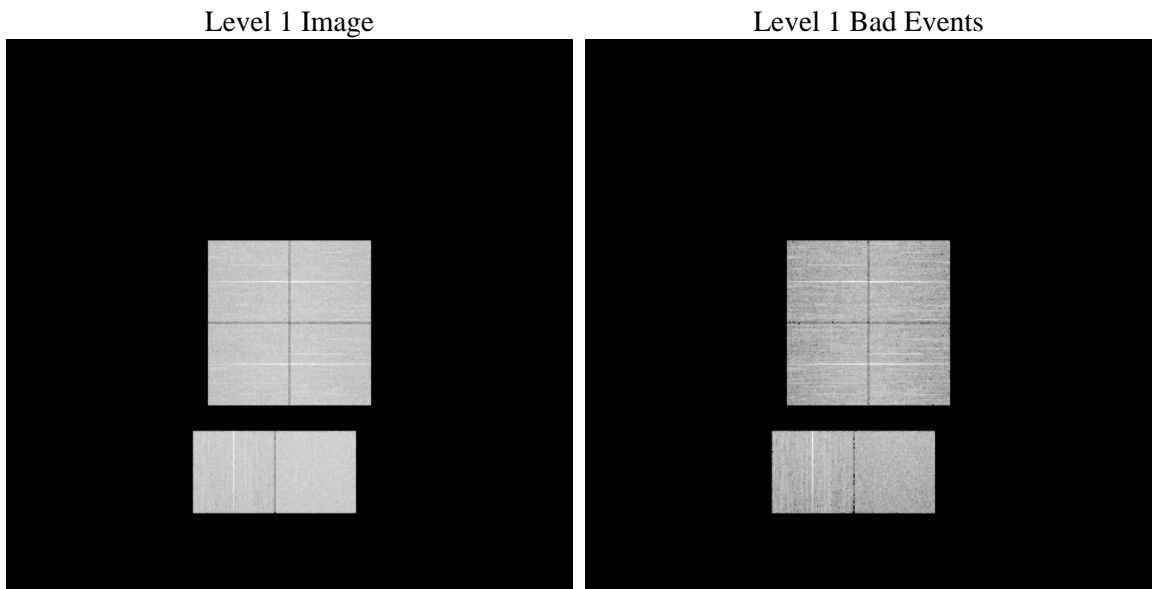
1 Front

seq_num	 	Sequence number
obs_id	57338	Observation id
title	ACIS-012367 diagnostics	Proposal title
observer	CHANDRA engineering request/realtime commanding	Principal investig
object	 	Source name
dtcycle	0	
cycle	P	events from which exps? Prim/Second/Both
ra_targ	0.0	Observer's specified target RA [deg]
dec_targ	0.0	Observer's specified target Dec [deg]
ra_nom	137.91950080948	Nominal RA [deg]
dec_nom	-5.4787800527282	Nominal Dec [deg]
roll_nom	14.614963210296	Nominal Roll [deg]
revision	2	Processing version of data
ontime	7475.1999722123	Sum of GTIs [s]
livetime	7380.5444891391	Livetime [s]
ontime0	7475.1999722123	Sum of GTIs [s]
ontime1	7475.1999722123	Sum of GTIs [s]
ontime2	7475.1999722123	Sum of GTIs [s]
ontime3	7475.1999722123	Sum of GTIs [s]
ontime6	7475.1999722123	Sum of GTIs [s]
ontime7	7475.1999722123	Sum of GTIs [s]
l2events	463029	Number of level 2 events

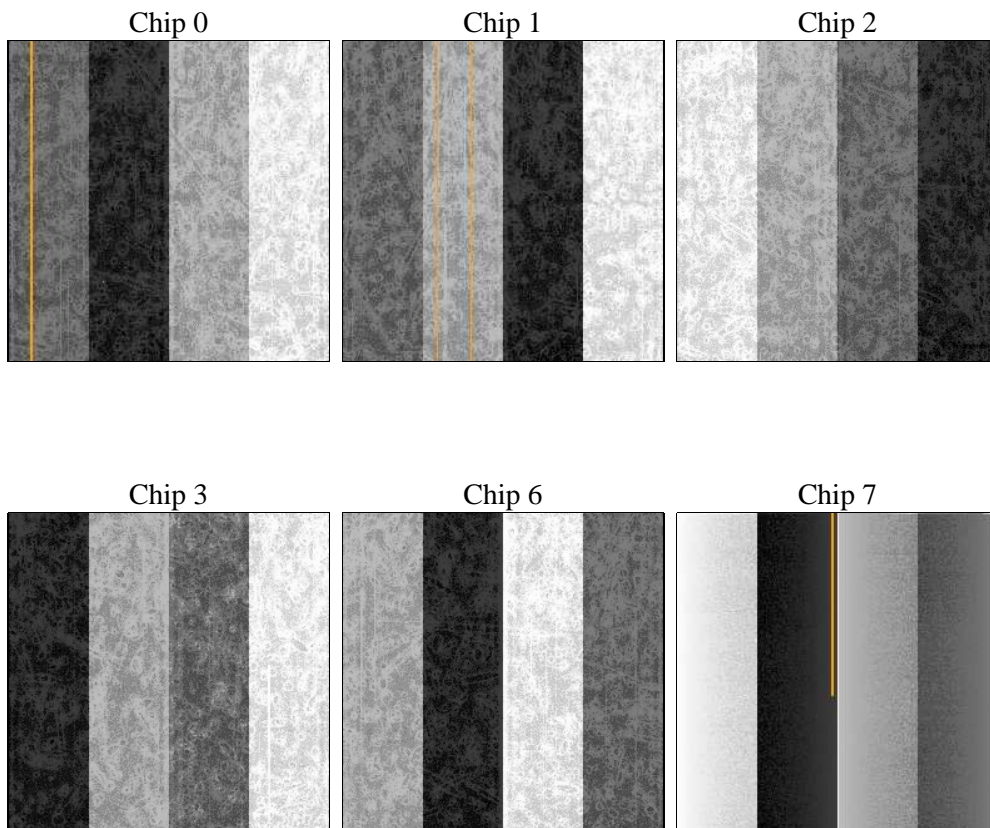
2 OBI

2.1 OBI

2.1.1 Images



2.1.2 Bias



2.1.3 Parameters

obi_num	0	Obi number	sched_exp_time	0.0	[s] Scheduled observation exposure time
ascdsver	8.4.4	Processing system revision	ontime	7475.1999722123	Sum of GTIs [s]
caldsver	4.4.9	 	ontime0	7475.1999722123	Sum of GTIs [s]
date	2012-05-30T09:52:44	Date and time of file creation	ontime1	7475.1999722123	Sum of GTIs [s]
revision	2	Processing version of data	ontime2	7475.1999722123	Sum of GTIs [s]
			ontime3	7475.1999722123	Sum of GTIs [s]
			ontime6	7475.1999722123	Sum of GTIs [s]
			ontime7	7475.1999722123	Sum of GTIs [s]
			l1events	899996	Number of level 1 events

2.1.4 Events

	ccd 0	ccd 1	ccd 2	ccd 3	ccd 6	ccd 7		ccd 0	ccd 1	ccd 2	ccd 3	ccd 6	ccd 7
level 1 events	139364	144690	143570	148151	151407	172814	grade 0 events	40362	40106	41063	41993	40998	20623
rejected events	64591	68412	68645	72020	73256	63717		28%	27%	28%	28%	27%	11%
rejected %	46%	47%	47%	48%	48%	36%	grade 1 events	305	237	311	343	239	147
								0%	0%	0%	0%	0%	0%
							grade 2 events	13343	14495	12918	13078	14225	23667
								9%	10%	8%	8%	9%	13%
							grade 3 events	4936	5118	5089	5187	5017	9909
								3%	3%	3%	3%	3%	5%
							grade 4 events	4865	5031	5178	5232	4998	9912
								3%	3%	3%	3%	3%	5%
							grade 5 events	3610	3657	3443	3979	3897	10186
								2%	2%	2%	2%	2%	5%
							grade 6 events	11499	11761	10896	10887	13159	45302
								8%	8%	7%	7%	8%	26%
							grade 7 events	60444	64285	64672	67452	68874	53068
								43%	44%	45%	45%	45%	30%

2.2 Compared Parameters

Parameter	Planned	Actual	Parameter	Planned	Actual
Instrument	ACIS	ACIS	Obspar format version number	7	7
Detector	ACIS-012367	ACIS-012367	Obspar file type	PREDICTED	ACTUAL
Grating	NONE	NONE	Obspar update status	NONE	UPDATED
Data mode	FAINT	FAINT	Number of optional ACIS chips dropped	0	0
Observation mode	SECONDARY	SECONDARY	On-chip summing requested	N	N
[deg] Pointing RA	0	137.9195008094795	Subarray requested	NONE	NONE
[deg] Pointing Dec	0	-5.478780052728178	Alternating exposures requested	N	N
[deg] Pointing Roll	0.0	14.61496321029632	[s] Primary exposure time	3.2	3.2
[mm] SIM focus pos	-1.429586	-0.7809083437167272			
[mm] SIM defocus	0.1037507710433287	0.7524282956875696			
[mm] SIM translation stage pos	250.455976	250.466033080201			
[mm] SIM translation stage offset	0	-0.01005468664627074			
[s] Observation start time (MET)	349589086.143088	349589085.11811			
Observation start date	2009-01-29T04:04:46	2009-01-29T04:04:45			
[s] Observation end time (MET)	349598307.043544	349598306.01856			
Observation end date	2009-01-29T06:38:27	2009-01-29T06:38:26			
Read mode	TIMED	TIMED			

2.3 Star Slots

2.4 FID Slots

A Summary

A.1 Status

V&V Scientist	Beth Sundheim
V&V Date (YYYY-MM-DD)	2012.06.04
V&V Edition	1
V&V Disposition and Status	OK
V&V Charge Time	7.4751999722123

A.2 Comments