

# V&V Reference Report

## L2 ASCDS Version : 8.4.4

Observation 57242 - L2 Version 2  
Chandra X-Ray Center

L2 Processing Date : Jun 2 2012

## Contents

<b>1</b>	<b>Front</b>	<b>2</b>
<b>2</b>	<b>OBI</b>	<b>3</b>
2.1	OBI . . . . .	3
2.1.1	Images . . . . .	3
2.1.2	Bias . . . . .	3
2.1.3	Parameters . . . . .	4
2.1.4	Events . . . . .	4
2.2	Compared Parameters . . . . .	5
2.3	Star Slots . . . . .	6
2.4	FID Slots . . . . .	6
<b>A</b>	<b>Summary</b>	<b>7</b>
A.1	Status . . . . .	7
A.2	Comments . . . . .	7

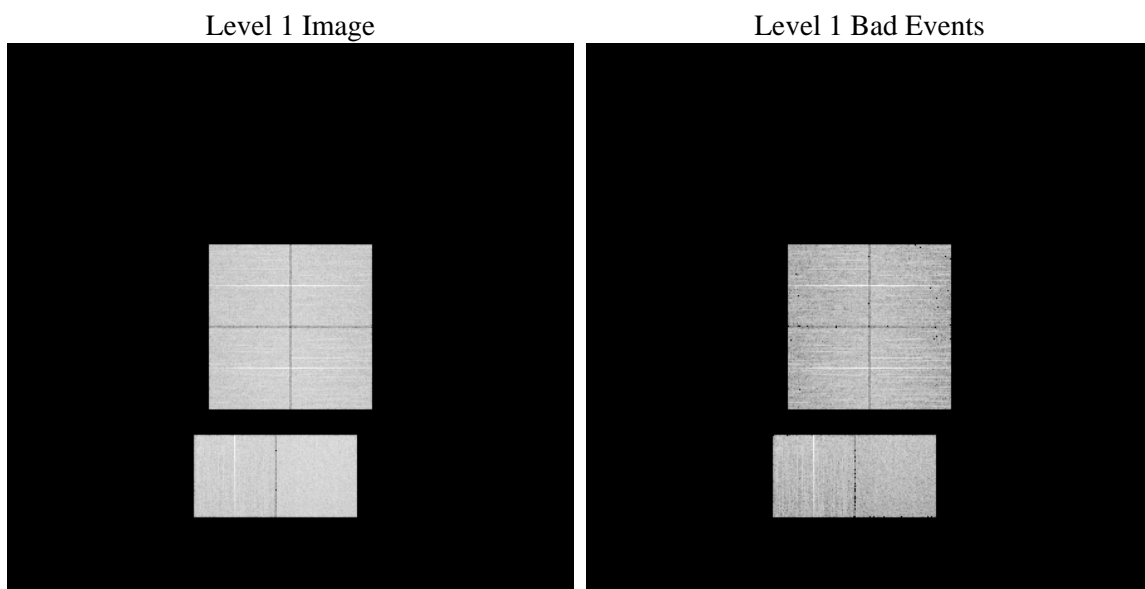
# 1 Front

seq_num	&#160	Sequence number
obs_id	57242	Observation id
title	ACIS-012367 diagnostics	Proposal title
observer	CHANDRA engineering request/realtime commanding	Principal investig
object	&#160	Source name
dtcycle	0	&#160
cycle	P	events from which exps? Prim/Second/Both
ra_targ	0.0	Observer's specified target RA [deg]
dec_targ	0.0	Observer's specified target Dec [deg]
ra_nom	182.36824571942	Nominal RA [deg]
dec_nom	25.399284242878	Nominal Dec [deg]
roll_nom	148.6184373878	Nominal Roll [deg]
revision	2	Processing version of data
ontime	6137.5999771953	Sum of GTIs [s]
livetime	6059.881990665	Livetime [s]
ontime0	6134.3589769006	Sum of GTIs [s]
ontime1	6137.5999771953	Sum of GTIs [s]
ontime2	6137.5999771953	Sum of GTIs [s]
ontime3	6137.5999771953	Sum of GTIs [s]
ontime6	6137.5999771953	Sum of GTIs [s]
ontime7	6137.5999771953	Sum of GTIs [s]
l2events	375612	Number of level 2 events

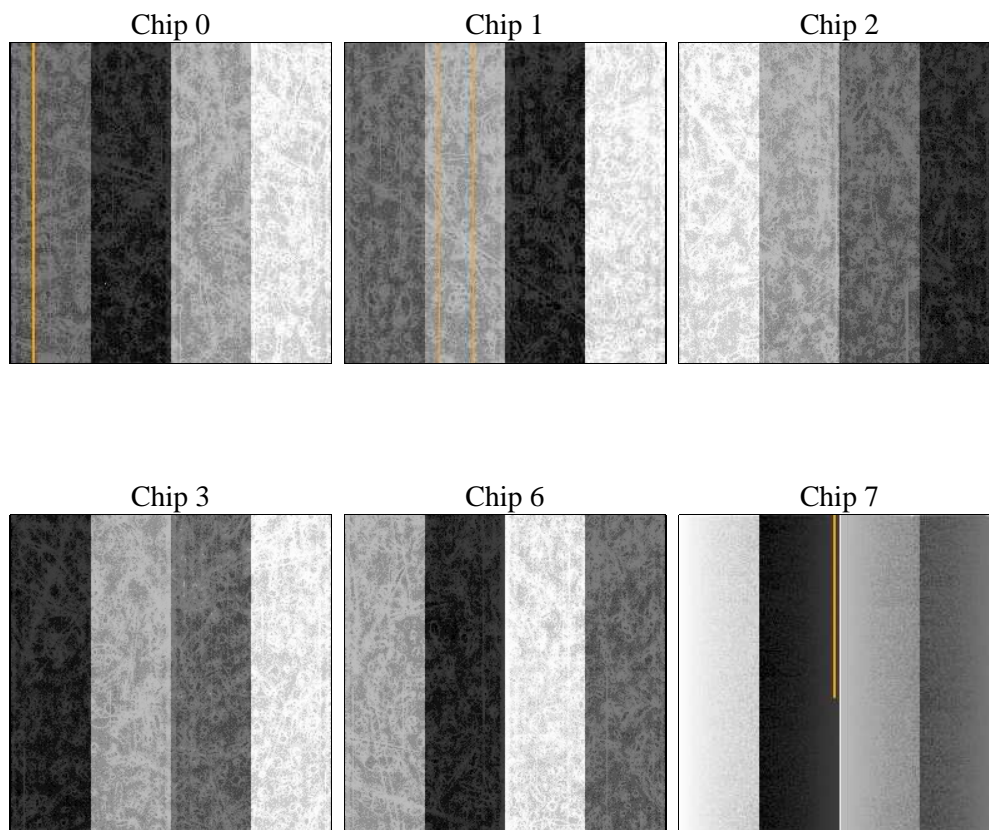
## 2 OBI

### 2.1 OBI

#### 2.1.1 Images



#### 2.1.2 Bias



### 2.1.3 Parameters

obi_num	0	Obi number	sched_exp_time	0.0	[s] Scheduled observation exposure time
ascdsver	8.4.4	Processing system revision	ontime	6137.5999771953	Sum of GTIs [s]
caldsver	4.4.9	&#160	ontime0	6134.3589769006	Sum of GTIs [s]
date	2012-06-02T09:36:48	Date and time of file creation	ontime1	6137.5999771953	Sum of GTIs [s]
revision	2	Processing version of data	ontime2	6137.5999771953	Sum of GTIs [s]
			ontime3	6137.5999771953	Sum of GTIs [s]
			ontime6	6137.5999771953	Sum of GTIs [s]
			ontime7	6137.5999771953	Sum of GTIs [s]
			l1events	732472	Number of level 1 events

### 2.1.4 Events

	ccd 0	ccd 1	ccd 2	ccd 3	ccd 6	ccd 7		ccd 0	ccd 1	ccd 2	ccd 3	ccd 6	ccd 7
level 1 events	113957	115587	117941	120861	121680	142446	grade 0 events	32709	32122	33227	33433	33146	16740
rejected events	53110	54423	56947	59444	58379	53064		28%	27%	28%	27%	27%	11%
rejected %	46%	47%	48%	49%	47%	37%	grade 1 events	282	200	282	282	253	114
								0%	0%	0%	0%	0%	0%
							grade 2 events	10992	11534	10495	10776	11323	19425
								9%	9%	8%	8%	9%	13%
							grade 3 events	4158	4075	4157	4258	4124	8483
								3%	3%	3%	3%	3%	5%
							grade 4 events	4060	4033	4234	4119	4101	8209
								3%	3%	3%	3%	3%	5%
							grade 5 events	3186	3192	3052	3410	3403	8734
								2%	2%	2%	2%	2%	6%
							grade 6 events	8928	9400	8881	8831	10607	36525
								7%	8%	7%	7%	8%	25%
							grade 7 events	49642	51031	53613	55752	54723	44216
								43%	44%	45%	46%	44%	31%

## 2.2 Compared Parameters

Parameter	Planned	Actual	Parameter	Planned	Actual
Instrument	ACIS	ACIS	Obspar format version number	7	7
Detector	ACIS-012367	ACIS-012367	Obspar file type	PREDICTED	ACTUAL
Grating	NONE	NONE	Obspar update status	NONE	UPDATED
Data mode	FAINT	FAINT	Number of optional ACIS chips dropped	0	0
Observation mode	SECONDARY	SECONDARY	On-chip summing requested	N	N
[deg] Pointing RA	0	182.3682457194178	Subarray requested	NONE	NONE
[deg] Pointing Dec	0	25.39928424287775	Alternating exposures requested	N	N
[deg] Pointing Roll	0.0	148.6184373878026	[s] Primary exposure time	3.2	3.2
[mm] SIM focus pos	-1.429586	-0.6828225247311905			
[mm] SIM defocus	0.1037507710433287	0.8505141146731063			
[mm] SIM translation stage pos	250.455976	250.466033080201			
[mm] SIM translation stage offset	0	-0.01005468664627074			
[s] Observation start time (MET)	353016725.263136	353016724.23815			
Observation start date	2009-03-09T20:12:05	2009-03-09T20:12:04			
[s] Observation end time (MET)	353024584.963526	353024583.93854			
Observation end date	2009-03-09T22:23:05	2009-03-09T22:23:03			
Read mode	TIMED	TIMED			

## **2.3 Star Slots**

## **2.4 FID Slots**

## A Summary

### A.1 Status

V&V Scientist	Jen Lauer
V&V Date (YYYY-MM-DD)	2012.06.07
V&V Edition	1
V&V Disposition and Status	OK
V&V Charge Time	6.1375999771953

### A.2 Comments