

# V&V Reference Report

## L2 ASCDS Version : 8.4.4

Observation 57225 - L2 Version 2  
Chandra X-Ray Center

L2 Processing Date : Jun 4 2012

## Contents

<b>1</b>	<b>Front</b>	<b>2</b>
<b>2</b>	<b>OBI</b>	<b>3</b>
2.1	OBI . . . . .	3
2.1.1	Images . . . . .	3
2.1.2	Bias . . . . .	3
2.1.3	Parameters . . . . .	4
2.1.4	Events . . . . .	4
2.2	Compared Parameters . . . . .	5
2.3	Star Slots . . . . .	6
2.4	FID Slots . . . . .	6
<b>A</b>	<b>Summary</b>	<b>7</b>
A.1	Status . . . . .	7
A.2	Comments . . . . .	7

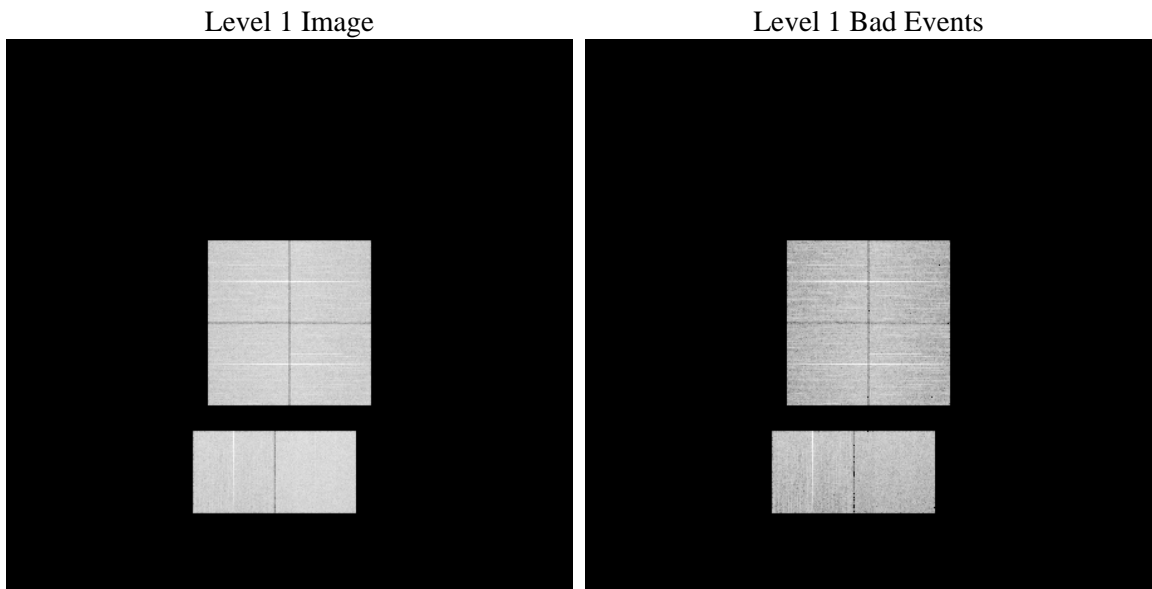
# 1 Front

seq_num	&#160	Sequence number
obs_id	57225	Observation id
title	ACIS-012367 diagnostics	Proposal title
observer	CHANDRA engineering request/realtime commanding	Principal investig
object	&#160	Source name
dtcycle	0	&#160
cycle	P	events from which exps? Prim/Second/Both
ra_targ	0.0	Observer's specified target RA [deg]
dec_targ	0.0	Observer's specified target Dec [deg]
ra_nom	193.46942058723	Nominal RA [deg]
dec_nom	20.251087733148	Nominal Dec [deg]
roll_nom	144.87582946323	Nominal Roll [deg]
revision	2	Processing version of data
ontime	8454.3355152607	Sum of GTIs [s]
livetime	8347.2816283768	Livetime [s]
ontime0	8454.376555264	Sum of GTIs [s]
ontime1	8454.3999685645	Sum of GTIs [s]
ontime2	8454.3999685645	Sum of GTIs [s]
ontime3	8454.2944752574	Sum of GTIs [s]
ontime6	8454.3999685645	Sum of GTIs [s]
ontime7	8454.3355152607	Sum of GTIs [s]
l2events	514475	Number of level 2 events

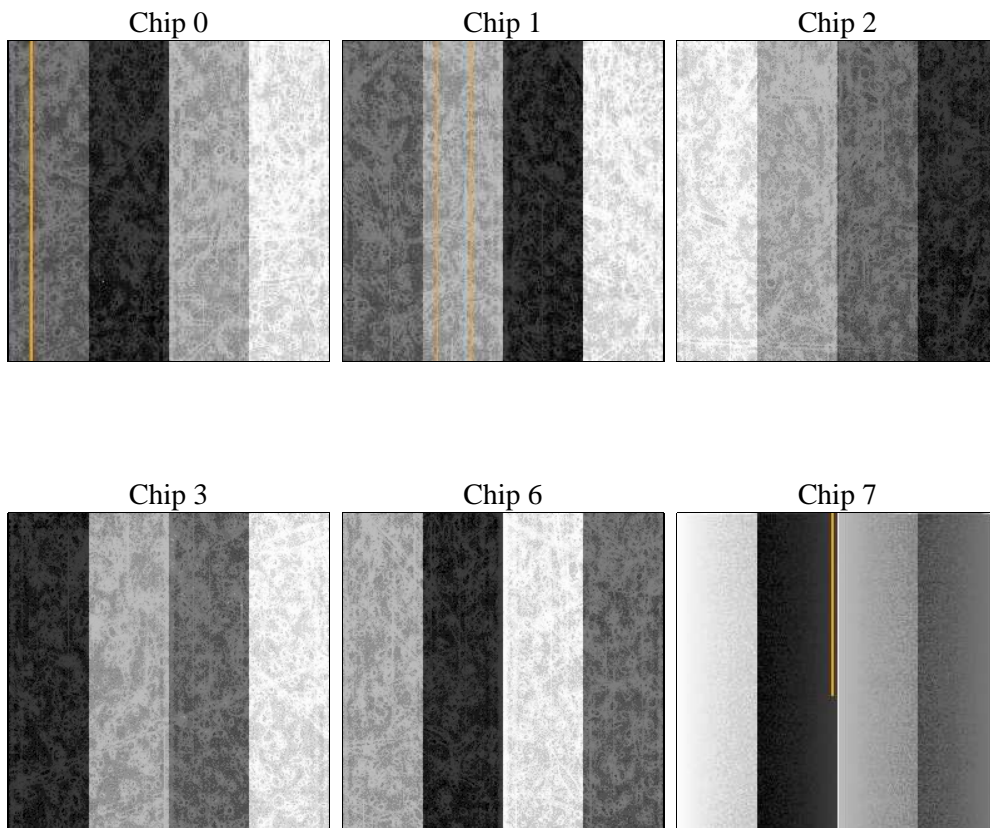
## 2 OBI

### 2.1 OBI

#### 2.1.1 Images



#### 2.1.2 Bias



### 2.1.3 Parameters

obi_num	0	Obi number	sched_exp_time	0.0	[s] Scheduled observation exposure time
ascdsver	8.4.4	Processing system revision	ontime	8454.3355152607	Sum of GTIs [s]
caldsver	4.4.9	&#160	ontime0	8454.376555264	Sum of GTIs [s]
date	2012-06-02T20:03:28	Date and time of file creation	ontime1	8454.3999685645	Sum of GTIs [s]
revision	2	Processing version of data	ontime2	8454.3999685645	Sum of GTIs [s]
			ontime3	8454.2944752574	Sum of GTIs [s]
			ontime6	8454.3999685645	Sum of GTIs [s]
			ontime7	8454.3355152607	Sum of GTIs [s]
			l1events	1003666	Number of level 1 events

### 2.1.4 Events

	ccd 0	ccd 1	ccd 2	ccd 3	ccd 6	ccd 7		ccd 0	ccd 1	ccd 2	ccd 3	ccd 6	ccd 7
level 1 events	159948	157507	159729	164947	165464	196071	grade 0 events	44650	43653	45159	45362	45568	23127
rejected events	76175	73907	76681	81422	79005	72920		27%	27%	28%	27%	27%	11%
rejected %	47%	46%	48%	49%	47%	37%	grade 1 events	352	281	411	387	271	188
								0%	0%	0%	0%	0%	0%
							grade 2 events	15131	15691	14402	14592	15304	26694
								9%	9%	9%	8%	9%	13%
							grade 3 events	5656	5742	5625	5631	5652	11261
								3%	3%	3%	3%	3%	5%
							grade 4 events	5710	5568	5638	5763	5563	11376
								3%	3%	3%	3%	3%	5%
							grade 5 events	4239	4378	4059	4629	4653	11563
								2%	2%	2%	2%	2%	5%
							grade 6 events	12626	12946	12224	12177	14372	50693
								7%	8%	7%	7%	8%	25%
							grade 7 events	71584	69248	72211	76406	74081	61169
								44%	43%	45%	46%	44%	31%

## 2.2 Compared Parameters

Parameter	Planned	Actual	Parameter	Planned	Actual
Instrument	ACIS	ACIS	Obspar format version number	7	7
Detector	ACIS-012367	ACIS-012367	Obspar file type	PREDICTED	ACTUAL
Grating	NONE	NONE	Obspar update status	NONE	UPDATED
Data mode	FAINT	FAINT	Number of optional ACIS chips dropped	0	0
Observation mode	SECONDARY	SECONDARY	On-chip summing requested	N	N
[deg] Pointing RA	0	193.4694205872314	Subarray requested	NONE	NONE
[deg] Pointing Dec	0	20.25108773314826	Alternating exposures requested	N	N
[deg] Pointing Roll	0.0	144.8758294632259	[s] Primary exposure time	3.2	3.2
[mm] SIM focus pos	-1.429586	-0.7809083437167272			
[mm] SIM defocus	0.1037507710433287	0.7524282956875696			
[mm] SIM translation stage pos	250.455976	250.466033080201			
[mm] SIM translation stage offset	0	-0.01005468664627074			
[s] Observation start time (MET)	353930734.208553	353930733.18355			
Observation start date	2009-03-20T10:05:34	2009-03-20T10:05:33			
[s] Observation end time (MET)	353943415.509183	353943414.48418			
Observation end date	2009-03-20T13:36:56	2009-03-20T13:36:54			
Read mode	TIMED	TIMED			

## **2.3 Star Slots**

## **2.4 FID Slots**

## A Summary

### A.1 Status

V&V Scientist	Jen Lauer
V&V Date (YYYY-MM-DD)	2012.06.08
V&V Edition	1
V&V Disposition and Status	OK
V&V Charge Time	8.4543355152607

### A.2 Comments