

V&V Reference Report

L2 ASCDS Version : 8.4.4

Observation 57170 - L2 Version 2
Chandra X-Ray Center

L2 Processing Date : Jun 4 2012

Contents

1	Front	2
2	OBI	3
2.1	OBI	3
2.1.1	Images	3
2.1.2	Bias	3
2.1.3	Parameters	4
2.1.4	Events	4
2.2	Compared Parameters	5
2.3	Star Slots	6
2.4	FID Slots	6
A	Summary	7
A.1	Status	7
A.2	Comments	7

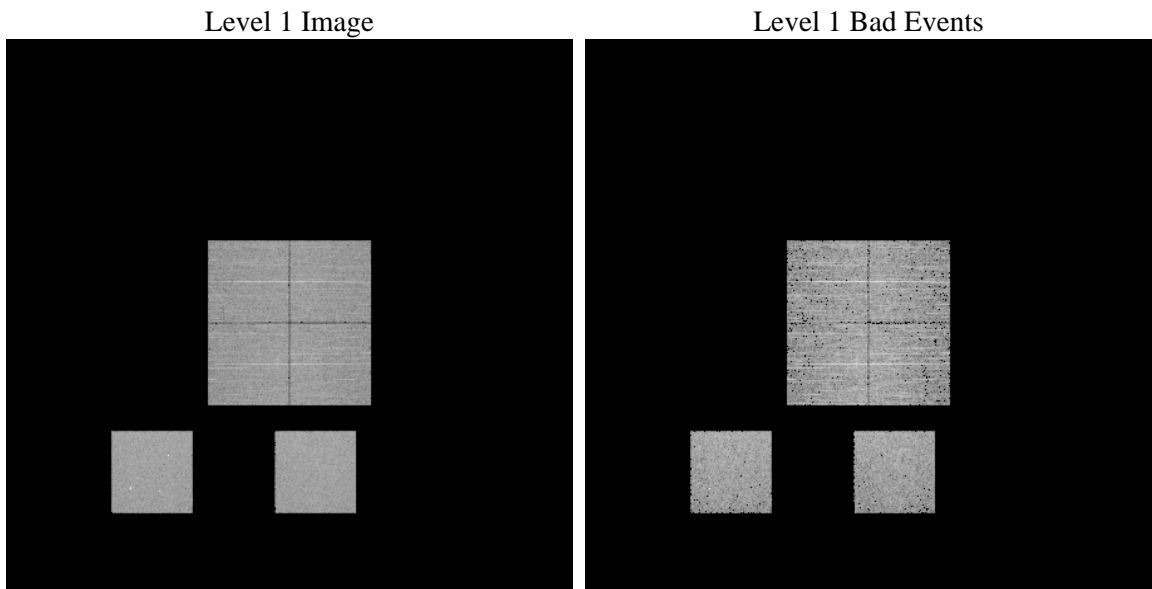
1 Front

seq_num	 	Sequence number
obs_id	57170	Observation id
title	ACIS-012357 diagnostics	Proposal title
observer	CHANDRA engineering request/realtime commanding	Principal investig
object	 	Source name
dtcycle	0	
cycle	P	events from which exps? Prim/Second/Both
ra_targ	0.0	Observer's specified target RA [deg]
dec_targ	0.0	Observer's specified target Dec [deg]
ra_nom	209.99939025566	Nominal RA [deg]
dec_nom	3.0021966254182	Nominal Dec [deg]
roll_nom	163.98111139956	Nominal Roll [deg]
revision	2	Processing version of data
ontime	3270.3999878764	Sum of GTIs [s]
livetime	3228.9882140315	Livetime [s]
ontime0	3270.3999878764	Sum of GTIs [s]
ontime1	3270.3999878764	Sum of GTIs [s]
ontime2	3270.3999878764	Sum of GTIs [s]
ontime3	3267.1590175629	Sum of GTIs [s]
ontime5	3270.3826047182	Sum of GTIs [s]
ontime7	3270.3999878764	Sum of GTIs [s]
l2events	209542	Number of level 2 events

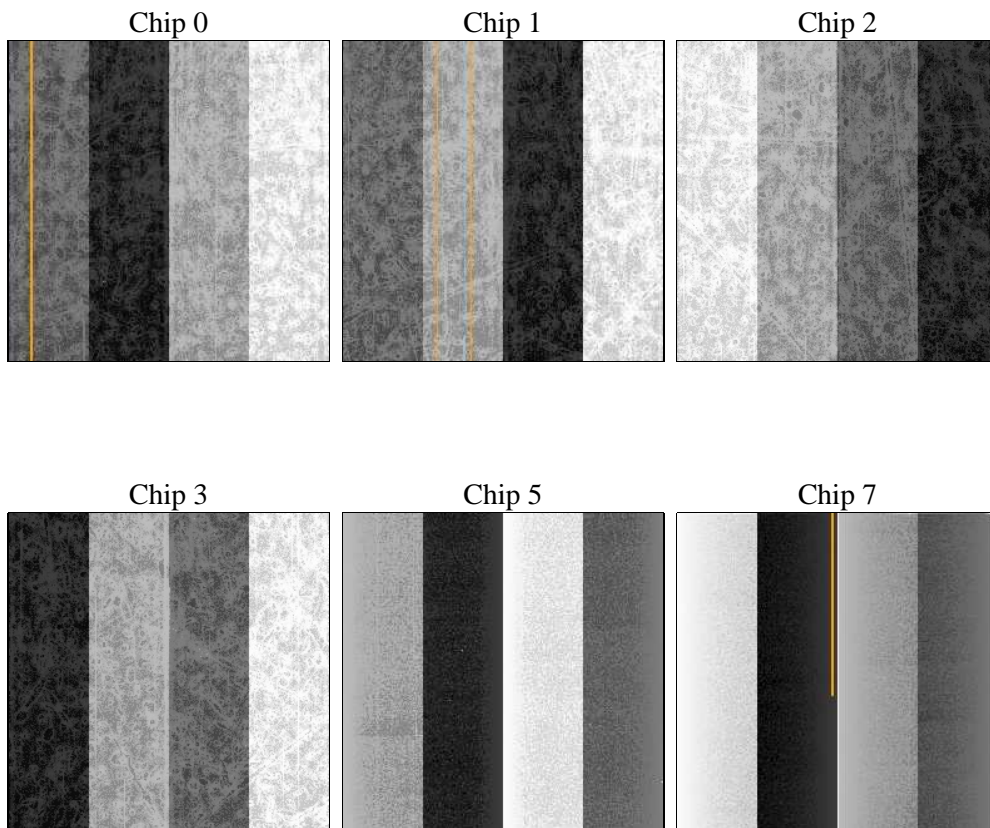
2 OBI

2.1 OBI

2.1.1 Images



2.1.2 Bias



2.1.3 Parameters

obi_num	0	Obi number	sched_exp_time	0.0	[s] Scheduled observation exposure time
ascdsver	8.4.4	Processing system revision	ontime	3270.3999878764	Sum of GTIs [s]
caldsver	4.4.9	 	ontime0	3270.3999878764	Sum of GTIs [s]
date	2012-06-04T17:21:15	Date and time of file creation	ontime1	3270.3999878764	Sum of GTIs [s]
revision	2	Processing version of data	ontime2	3270.3999878764	Sum of GTIs [s]
			ontime3	3267.1590175629	Sum of GTIs [s]
			ontime5	3270.3826047182	Sum of GTIs [s]
			ontime7	3270.3999878764	Sum of GTIs [s]
			l1events	394194	Number of level 1 events

2.1.4 Events

	ccd 0	ccd 1	ccd 2	ccd 3	ccd 5	ccd 7		ccd 0	ccd 1	ccd 2	ccd 3	ccd 5	ccd 7
level 1 events	60242	60001	62044	62013	76040	73854	grade 0 events	17068	16822	17048	17481	7518	8862
rejected events	28578	28083	30605	29977	28950	27065		28%	28%	27%	28%	9%	11%
rejected %	47%	46%	49%	48%	38%	36%	grade 1 events	110	106	147	121	109	68
								0%	0%	0%	0%	0%	0%
							grade 2 events	5702	5892	5499	5529	16697	10084
								9%	9%	8%	8%	21%	13%
							grade 3 events	2092	2127	2156	2194	2225	4371
								3%	3%	3%	3%	2%	5%
							grade 4 events	2137	2189	2190	2189	2131	4338
								3%	3%	3%	3%	2%	5%
							grade 5 events	1593	1699	1468	1682	3967	4507
								2%	2%	2%	2%	5%	6%
							grade 6 events	4698	4926	4577	4669	18558	19183
								7%	8%	7%	7%	24%	25%
							grade 7 events	26842	26240	28959	28148	24835	22441
								44%	43%	46%	45%	32%	30%

2.2 Compared Parameters

Parameter	Planned	Actual	Parameter	Planned	Actual
Instrument	ACIS	ACIS	Obspar format version number	7	7
Detector	ACIS-012357	ACIS-012357	Obspar file type	PREDICTED	ACTUAL
Grating	NONE	NONE	Obspar update status	NONE	UPDATED
Data mode	FAINT	FAINT	Number of optional ACIS chips dropped	0	0
Observation mode	SECONDARY	SECONDARY	On-chip summing requested	N	N
[deg] Pointing RA	0	209.9993902556594	Subarray requested	NONE	NONE
[deg] Pointing Dec	0	3.002196625418231	Alternating exposures requested	N	N
[deg] Pointing Roll	0.0	163.9811113995602	[s] Primary exposure time	3.2	3.2
[mm] SIM focus pos	-1.429586	-0.7809083437167272			
[mm] SIM defocus	0.1037507710433287	0.7524282956875696			
[mm] SIM translation stage pos	250.455976	250.466033080201			
[mm] SIM translation stage offset	0	-0.01005468664627074			
[s] Observation start time (MET)	356402222.531484	356402221.50648			
Observation start date	2009-04-18T00:37:03	2009-04-18T00:37:01			
[s] Observation end time (MET)	356410428.681893	356410427.65689			
Observation end date	2009-04-18T02:53:49	2009-04-18T02:53:47			
Read mode	TIMED	TIMED			

2.3 Star Slots

2.4 FID Slots

A Summary

A.1 Status

V&V Scientist	Beth Sundheim
V&V Date (YYYY-MM-DD)	2012.06.08
V&V Edition	1
V&V Disposition and Status	OK
V&V Charge Time	3.2703999878764

A.2 Comments