

V&V Reference Report

L2 ASCDS Version : 8.4.5

Observation 57144 - L2 Version 2
Chandra X-Ray Center

L2 Processing Date : Jun 6 2012

Contents

1	Front	2
2	OBI	3
2.1	OBI	3
2.1.1	Images	3
2.1.2	Bias	3
2.1.3	Parameters	4
2.1.4	Events	4
2.2	Compared Parameters	5
2.3	Star Slots	6
2.4	FID Slots	6
A	Summary	7
A.1	Status	7
A.2	Comments	7

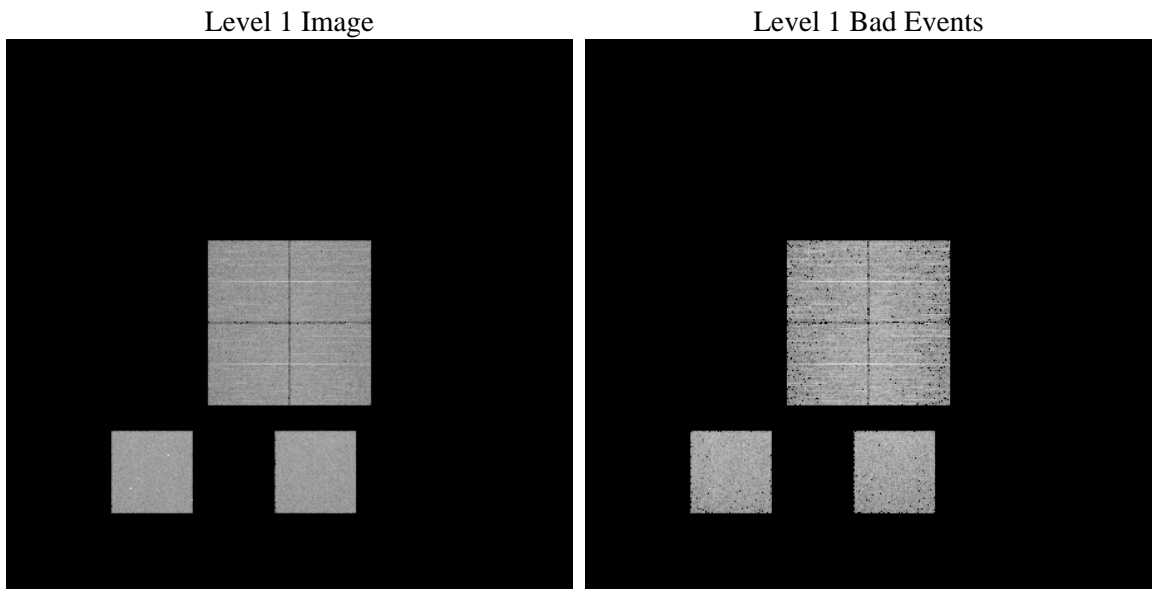
1 Front

seq_num	 	Sequence number
obs_id	57144	Observation id
title	ACIS-012357 diagnostics	Proposal title
observer	CHANDRA engineering request/realtime commanding	Principal investig
object	 	Source name
dtcycle	0	
cycle	P	events from which exps? Prim/Second/Both
ra_targ	0.0	Observer's specified target RA [deg]
dec_targ	0.0	Observer's specified target Dec [deg]
ra_nom	217.82403573952	Nominal RA [deg]
dec_nom	0.40602079432895	Nominal Dec [deg]
roll_nom	162.66983456803	Nominal Roll [deg]
revision	2	Processing version of data
ontime	3276.1194829941	Sum of GTIs [s]
livetime	3234.6352854581	Livetime [s]
ontime0	3276.0784429908	Sum of GTIs [s]
ontime1	3276.0374029875	Sum of GTIs [s]
ontime2	3275.9963629842	Sum of GTIs [s]
ontime3	3276.1605229974	Sum of GTIs [s]
ontime5	3275.9553229809	Sum of GTIs [s]
ontime7	3276.1194829941	Sum of GTIs [s]
l2events	210367	Number of level 2 events

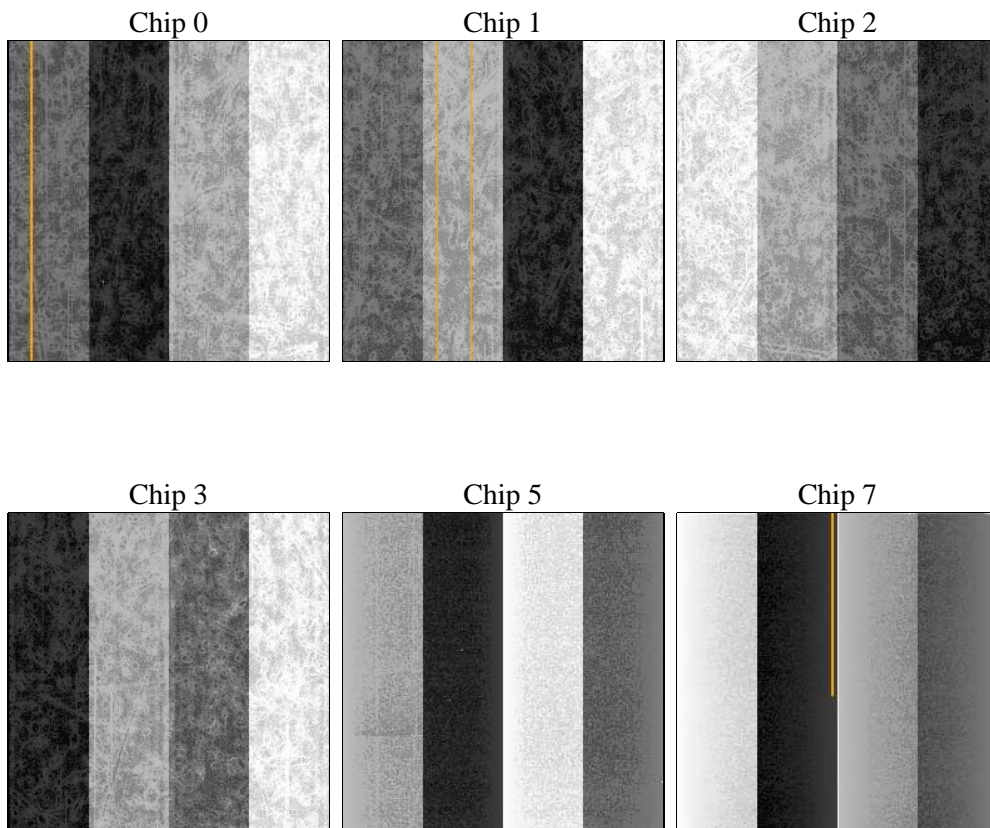
2 OBI

2.1 OBI

2.1.1 Images



2.1.2 Bias



2.1.3 Parameters

obi_num	0	Obi number	sched_exp_time	0.0	[s] Scheduled observation exposure time
ascdsver	8.4.5	Processing system revision	ontime	3276.1194829941	Sum of GTIs [s]
caldsver	4.4.10	 	ontime0	3276.0784429908	Sum of GTIs [s]
date	2012-06-06T10:03:07	Date and time of file creation	ontime1	3276.0374029875	Sum of GTIs [s]
revision	2	Processing version of data	ontime2	3275.9963629842	Sum of GTIs [s]
			ontime3	3276.1605229974	Sum of GTIs [s]
			ontime5	3275.9553229809	Sum of GTIs [s]
			ontime7	3276.1194829941	Sum of GTIs [s]
			l1events	397051	Number of level 1 events

2.1.4 Events

	ccd 0	ccd 1	ccd 2	ccd 3	ccd 5	ccd 7		ccd 0	ccd 1	ccd 2	ccd 3	ccd 5	ccd 7
level 1 events	59408	60502	61410	63714	77156	74861	grade 0 events	16840	16776	17425	17506	7277	8666
rejected events	27884	28664	29466	31602	29412	28132		28%	27%	28%	27%	9%	11%
rejected %	46%	47%	47%	49%	38%	37%	grade 1 events	111	120	134	160	151	70
								0%	0%	0%	0%	0%	0%
							grade 2 events	5652	5931	5541	5635	17027	10033
								9%	9%	9%	8%	22%	13%
							grade 3 events	2142	2020	2180	2154	2179	4415
								3%	3%	3%	3%	2%	5%
							grade 4 events	2178	2070	2167	2132	2100	4302
								3%	3%	3%	3%	2%	5%
							grade 5 events	1670	1639	1489	1815	4047	4642
								2%	2%	2%	2%	5%	6%
							grade 6 events	4712	5041	4631	4685	19161	19313
								7%	8%	7%	7%	24%	25%
							grade 7 events	26103	26905	27843	29627	25214	23420
								43%	44%	45%	46%	32%	31%

2.2 Compared Parameters

Parameter	Planned	Actual	Parameter	Planned	Actual
Instrument	ACIS	ACIS	Obspar format version number	7	7
Detector	ACIS-012357	ACIS-012357	Obspar file type	PREDICTED	ACTUAL
Grating	NONE	NONE	Obspar update status	NONE	UPDATED
Data mode	FAINT	FAINT	Number of optional ACIS chips dropped	0	0
Observation mode	SECONDARY	SECONDARY	On-chip summing requested	N	N
[deg] Pointing RA	0	217.8240357395181	Subarray requested	NONE	NONE
[deg] Pointing Dec	0	0.4060207943289502	Alternating exposures requested	N	N
[deg] Pointing Roll	0.0	162.6698345680301	[s] Primary exposure time	3.2	3.2
[mm] SIM focus pos	-1.429586	-0.7809083437167272			
[mm] SIM defocus	0.1037507710433287	0.7524282956875696			
[mm] SIM translation stage pos	250.455976	250.4635187648994			
[mm] SIM translation stage offset	0	-0.007540371344731511			
[s] Observation start time (MET)	357087670.815618	357087669.79063			
Observation start date	2009-04-25T23:01:11	2009-04-25T23:01:09			
[s] Observation end time (MET)	357117043.217081	357117042.19209			
Observation end date	2009-04-26T07:10:43	2009-04-26T07:10:42			
Read mode	TIMED	TIMED			

2.3 Star Slots

2.4 FID Slots

A Summary

A.1 Status

V&V Scientist	Beth Sundheim
V&V Date (YYYY-MM-DD)	2012.06.08
V&V Edition	1
V&V Disposition and Status	OK
V&V Charge Time	3.2761194829941

A.2 Comments