

V&V Reference Report

L2 ASCDS Version : 8.4.5

Observation 57061 - L2 Version 2
Chandra X-Ray Center

L2 Processing Date : Jun 8 2012

Contents

1	Front	2
2	OBI	3
2.1	OBI	3
2.1.1	Images	3
2.1.2	Bias	3
2.1.3	Parameters	4
2.1.4	Events	4
2.2	Compared Parameters	5
2.3	Star Slots	6
2.4	FID Slots	6
A	Summary	7
A.1	Status	7
A.2	Comments	7

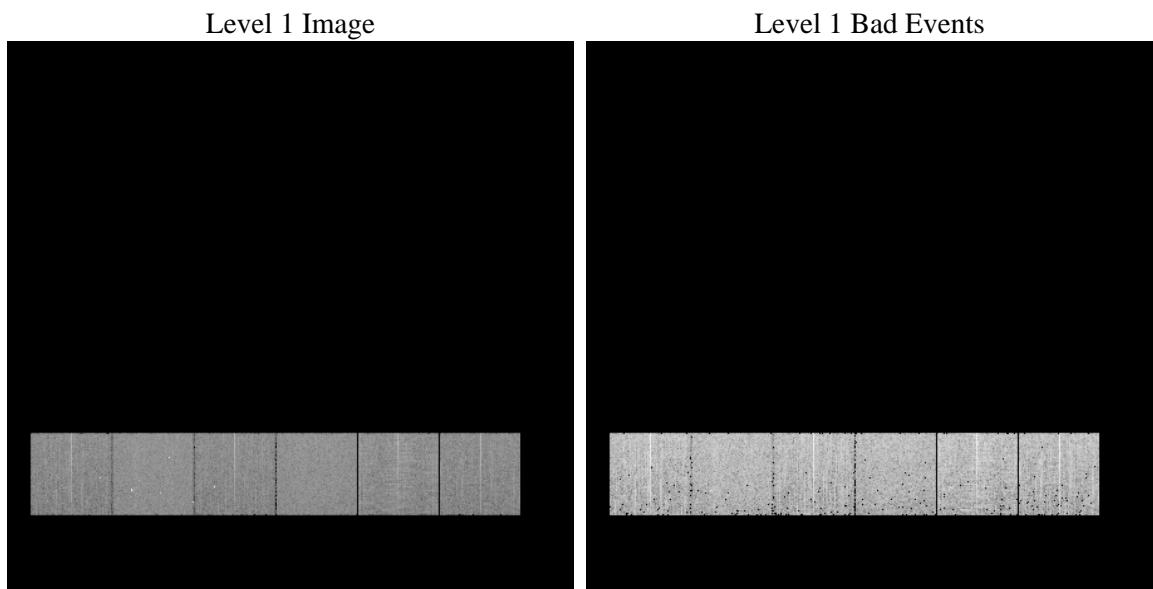
1 Front

seq_num	 	Sequence number
obs_id	57061	Observation id
title	ACIS-456789 diagnostics	Proposal title
observer	CHANDRA engineering request/realtime commanding	Principal investig
object	 	Source name
dtcycle	0	
cycle	P	events from which exps? Prim/Second/Both
ra_targ	0.0	Observer's specified target RA [deg]
dec_targ	0.0	Observer's specified target Dec [deg]
ra_nom	76.912197568039	Nominal RA [deg]
dec_nom	-31.02707413169	Nominal Dec [deg]
roll_nom	181.83562616934	Nominal Roll [deg]
revision	2	Processing version of data
ontime	3273.1735580564	Sum of GTIs [s]
livetime	3231.7266635957	Livetime [s]
ontime4	3273.0504380465	Sum of GTIs [s]
ontime5	3273.1325180531	Sum of GTIs [s]
ontime6	3273.0914780498	Sum of GTIs [s]
ontime7	3273.1735580564	Sum of GTIs [s]
ontime8	3273.0093980432	Sum of GTIs [s]
ontime9	3273.2145980597	Sum of GTIs [s]
l2events	206886	Number of level 2 events

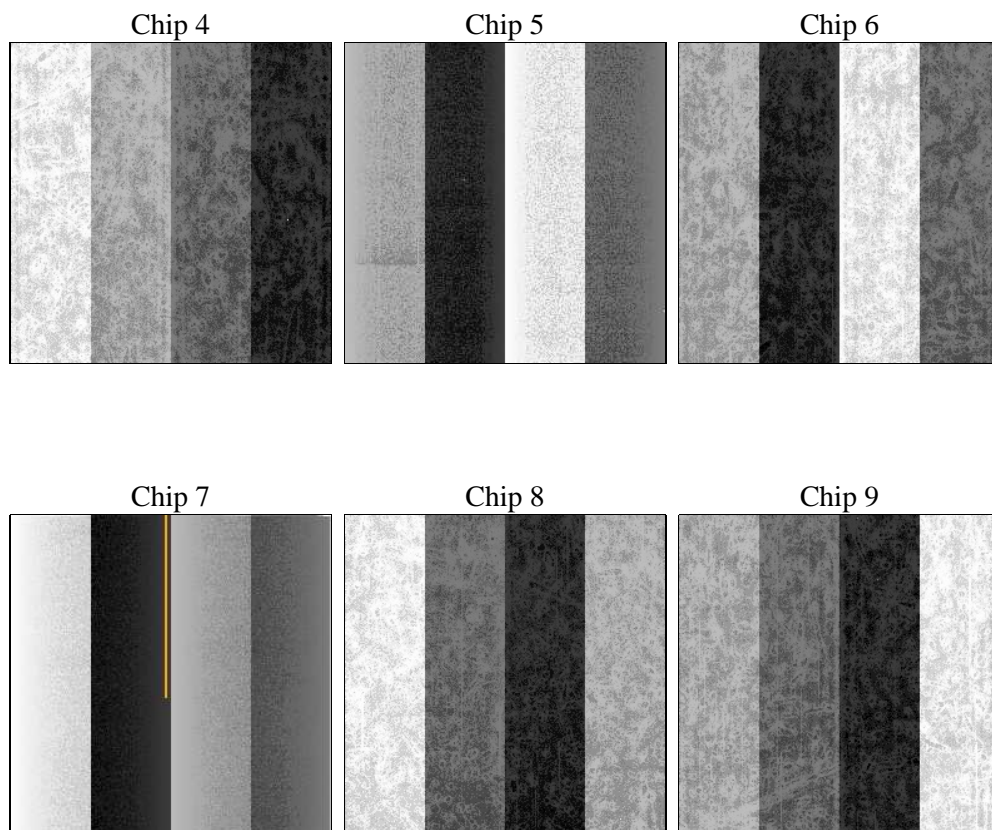
2 OBI

2.1 OBI

2.1.1 Images



2.1.2 Bias



2.1.3 Parameters

obi_num	0	Obi number	sched_exp_time	0.0	[s] Scheduled observation exposure time
ascdsver	8.4.5	Processing system revision	ontime	3273.1735580564	Sum of GTIs [s]
caldsver	4.4.10	 	ontime4	3273.0504380465	Sum of GTIs [s]
date	2012-06-08T09:30:16	Date and time of file creation	ontime5	3273.1325180531	Sum of GTIs [s]
revision	2	Processing version of data	ontime6	3273.0914780498	Sum of GTIs [s]
			ontime7	3273.1735580564	Sum of GTIs [s]
			ontime8	3273.0093980432	Sum of GTIs [s]
			ontime9	3273.2145980597	Sum of GTIs [s]
			l1events	420815	Number of level 1 events

2.1.4 Events

	ccd 4	ccd 5	ccd 6	ccd 7	ccd 8	ccd 9		ccd 4	ccd 5	ccd 6	ccd 7	ccd 8	ccd 9
level 1 events	63874	78792	65685	75171	73426	63867	grade 0 events	17404	7759	16988	8631	18507	16617
rejected events	33445	30233	32301	28837	35315	32609		27%	9%	25%	11%	25%	26%
rejected %	52%	38%	49%	38%	48%	51%	grade 1 events	180	179	115	64	138	127
								0%	0%	0%	0%	0%	0%
							grade 2 events	4881	17318	6750	9911	7299	5476
								7%	21%	10%	13%	9%	8%
							grade 3 events	2115	2329	2136	4274	2848	2059
								3%	2%	3%	5%	3%	3%
							grade 4 events	2099	2247	2127	4296	2783	2087
								3%	2%	3%	5%	3%	3%
							grade 5 events	1742	4101	1816	4664	2361	1947
								2%	5%	2%	6%	3%	3%
							grade 6 events	3930	18906	5383	19222	6674	5019
								6%	23%	8%	25%	9%	7%
							grade 7 events	31523	25953	30370	24109	32816	30535
								49%	32%	46%	32%	44%	47%

2.2 Compared Parameters

Parameter	Planned	Actual	Parameter	Planned	Actual
Instrument	ACIS	ACIS	Obspar format version number	7	7
Detector	ACIS-456789	ACIS-456789	Obspar file type	PREDICTED	ACTUAL
Grating	NONE	NONE	Obspar update status	NONE	UPDATED
Data mode	FAINT	FAINT	Number of optional ACIS chips dropped	0	0
Observation mode	SECONDARY	SECONDARY	On-chip summing requested	N	N
[deg] Pointing RA	0	76.91219756803935	Subarray requested	NONE	NONE
[deg] Pointing Dec	0	-31.02707413168969	Alternating exposures requested	N	N
[deg] Pointing Roll	0.0	181.8356261693376	[s] Primary exposure time	3.2	3.2
[mm] SIM focus pos	-1.429586	-0.6828225247311905			
[mm] SIM defocus	0.1037507710433287	0.8505141146731063			
[mm] SIM translation stage pos	250.455976	250.466033080201			
[mm] SIM translation stage offset	0	-0.01005468664627074			
[s] Observation start time (MET)	360746361.347899	360746360.32288			
Observation start date	2009-06-07T07:19:21	2009-06-07T07:19:20			
[s] Observation end time (MET)	360751266.998144	360751265.97313			
Observation end date	2009-06-07T08:41:07	2009-06-07T08:41:05			
Read mode	TIMED	TIMED			

2.3 Star Slots

2.4 FID Slots

A Summary

A.1 Status

V&V Scientist	Beth Sundheim
V&V Date (YYYY-MM-DD)	2012.06.12
V&V Edition	1
V&V Disposition and Status	OK
V&V Charge Time	3.2731735580564

A.2 Comments