

V&V Reference Report

L2 ASCDS Version : 8.4.5

Observation 56904 - L2 Version 2
Chandra X-Ray Center

L2 Processing Date : Jun 11 2012

Contents

1	Front	2
2	OBI	3
2.1	OBI	3
2.1.1	Images	3
2.1.2	Bias	3
2.1.3	Parameters	4
2.1.4	Events	4
2.2	Compared Parameters	5
2.3	Star Slots	6
2.4	FID Slots	6
A	Summary	7
A.1	Status	7
A.2	Comments	7

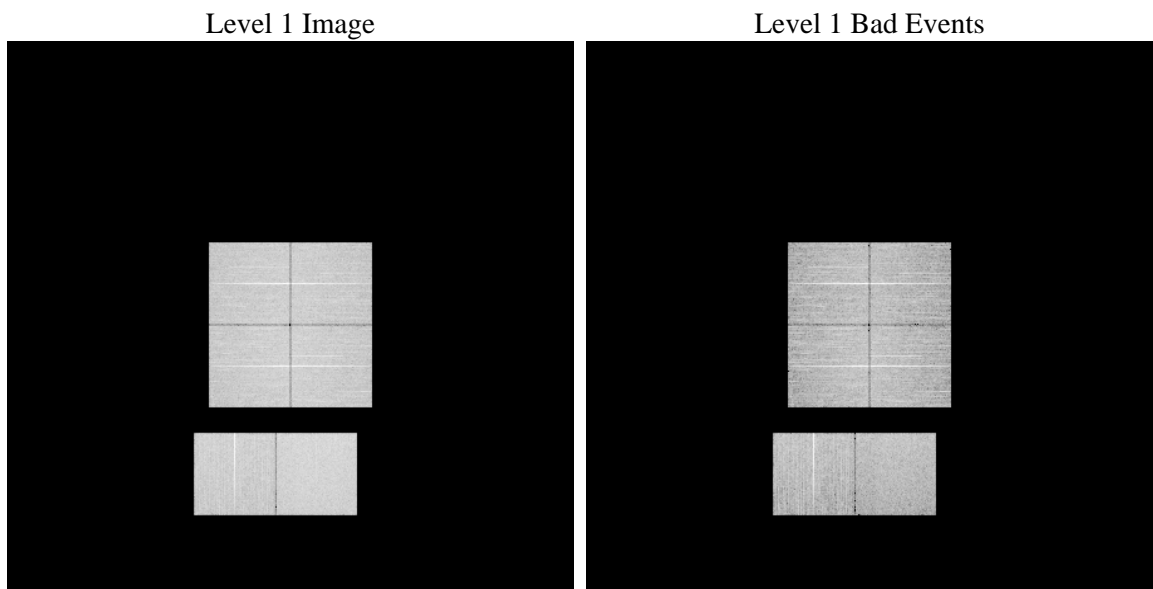
1 Front

seq_num	 	Sequence number
obs_id	56904	Observation id
title	ACIS-012367 diagnostics	Proposal title
observer	CHANDRA engineering request/realtime commanding	Principal investig
object	 	Source name
dtcycle	0	
cycle	P	events from which exps? Prim/Second/Both
ra_targ	0.0	Observer's specified target RA [deg]
dec_targ	0.0	Observer's specified target Dec [deg]
ra_nom	5.9785720337002	Nominal RA [deg]
dec_nom	-7.9807010075303	Nominal Dec [deg]
roll_nom	104.89123332456	Nominal Roll [deg]
revision	2	Processing version of data
ontime	8451.1999685764	Sum of GTIs [s]
livetime	8344.1857858726	Livetime [s]
ontime0	8451.1999685764	Sum of GTIs [s]
ontime1	8451.1999685764	Sum of GTIs [s]
ontime2	8451.1999685764	Sum of GTIs [s]
ontime3	8451.1999685764	Sum of GTIs [s]
ontime6	8451.1999685764	Sum of GTIs [s]
ontime7	8451.1999685764	Sum of GTIs [s]
l2events	464138	Number of level 2 events

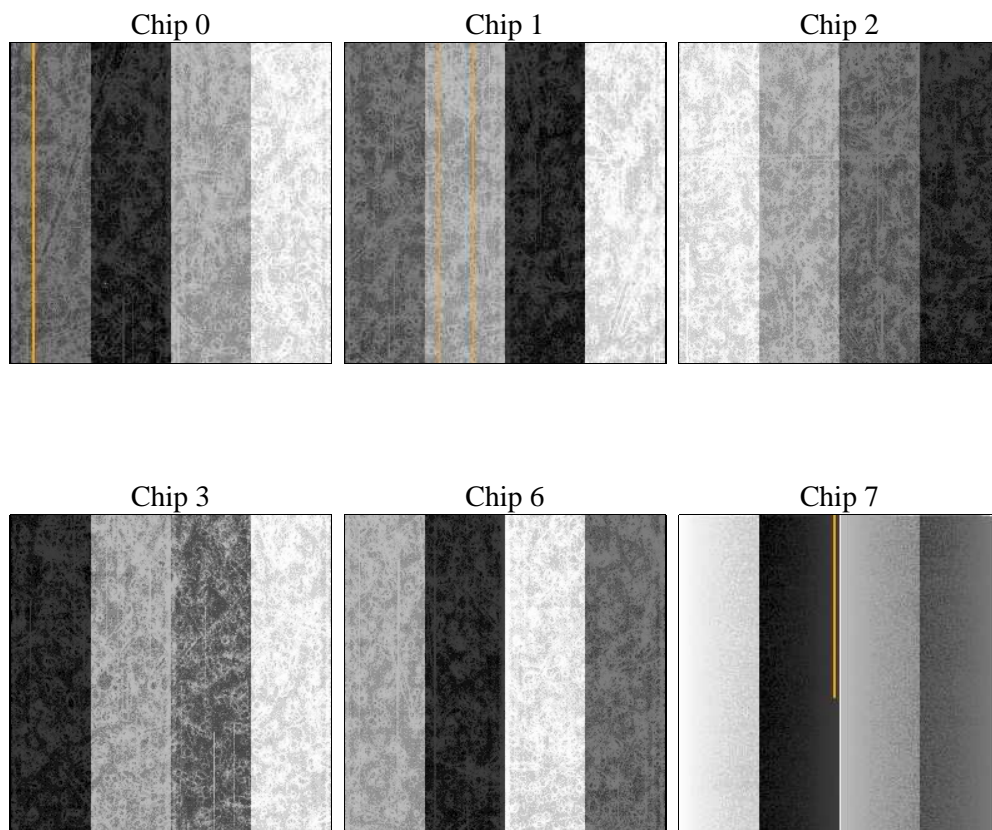
2 OBI

2.1 OBI

2.1.1 Images



2.1.2 Bias



2.1.3 Parameters

obi_num	2	Obi number	sched_exp_time	0.0	[s] Scheduled observation exposure time
ascdsver	8.4.5	Processing system revision	ontime	8451.1999685764	Sum of GTIs [s]
caldsver	4.4.10	 	ontime0	8451.1999685764	Sum of GTIs [s]
date	2012-06-11T15:27:42	Date and time of file creation	ontime1	8451.1999685764	Sum of GTIs [s]
revision	2	Processing version of data	ontime2	8451.1999685764	Sum of GTIs [s]
			ontime3	8451.1999685764	Sum of GTIs [s]
			ontime6	8451.1999685764	Sum of GTIs [s]
			ontime7	8451.1999685764	Sum of GTIs [s]
			l1events	957823	Number of level 1 events

2.1.4 Events

	ccd 0	ccd 1	ccd 2	ccd 3	ccd 6	ccd 7		ccd 0	ccd 1	ccd 2	ccd 3	ccd 6	ccd 7
level 1 events	151165	147141	155903	156488	160355	186771	grade 0 events	39486	37713	41005	41326	38285	19583
rejected events	76515	71918	81389	80947	83243	73093		26%	25%	26%	26%	23%	10%
rejected %	50%	48%	52%	51%	51%	39%	grade 1 events	255	221	296	333	234	167
								0%	0%	0%	0%	0%	0%
							grade 2 events	13794	15738	12511	12619	15640	25400
								9%	10%	8%	8%	9%	13%
							grade 3 events	4959	4743	5173	5273	4885	9721
								3%	3%	3%	3%	3%	5%
							grade 4 events	4988	4810	5046	5136	4759	9838
								3%	3%	3%	3%	2%	5%
							grade 5 events	3875	4001	3796	4364	4182	10776
								2%	2%	2%	2%	2%	5%
							grade 6 events	11423	12219	10779	11187	13543	49136
								7%	8%	6%	7%	8%	26%
							grade 7 events	72385	67696	77297	76250	78827	62150
								47%	46%	49%	48%	49%	33%

2.2 Compared Parameters

Parameter	Planned	Actual	Parameter	Planned	Actual
Instrument	ACIS	ACIS	Obspar format version number	7	7
Detector	ACIS-012367	ACIS-012367	Obspar file type	PREDICTED	ACTUAL
Grating	NONE	NONE	Obspar update status	NONE	UPDATED
Data mode	FAINT	FAINT	Number of optional ACIS chips dropped	0	0
Observation mode	SECONDARY	SECONDARY	On-chip summing requested	N	N
[deg] Pointing RA	0	5.978572033700243	Subarray requested	NONE	NONE
[deg] Pointing Dec	0	-7.980701007530281	Alternating exposures requested	N	N
[deg] Pointing Roll	0.0	104.8912333245551	[s] Primary exposure time	3.2	3.2
[mm] SIM focus pos	-1.429586	-0.7809083437167272			
[mm] SIM defocus	0.1037507710433287	0.7524282956875696			
[mm] SIM translation stage pos	250.455976	250.4635187648994			
[mm] SIM translation stage offset	0	-0.007540371344731511			
[s] Observation start time (MET)	366037575.612537	366037574.58752			
Observation start date	2009-08-07T13:06:16	2009-08-07T13:06:14			
[s] Observation end time (MET)	366047755.913047	366047754.88803			
Observation end date	2009-08-07T15:55:56	2009-08-07T15:55:54			
Read mode	TIMED	TIMED			

2.3 Star Slots

2.4 FID Slots

A Summary

A.1 Status

V&V Scientist	Jen Lauer
V&V Date (YYYY-MM-DD)	2012.06.14
V&V Edition	1
V&V Disposition and Status	OK
V&V Charge Time	8.4511999685764

A.2 Comments