

# V&V Reference Report

## L2 ASCDS Version : 8.4.5

Observation 56860 - L2 Version 2  
Chandra X-Ray Center

L2 Processing Date : Jun 12 2012

## Contents

<b>1</b>	<b>Front</b>	<b>2</b>
<b>2</b>	<b>OBI</b>	<b>3</b>
2.1	OBI . . . . .	3
2.1.1	Images . . . . .	3
2.1.2	Bias . . . . .	3
2.1.3	Parameters . . . . .	4
2.1.4	Events . . . . .	4
2.2	Compared Parameters . . . . .	5
2.3	Star Slots . . . . .	6
2.4	FID Slots . . . . .	6
<b>A</b>	<b>Summary</b>	<b>7</b>
A.1	Status . . . . .	7
A.2	Comments . . . . .	7

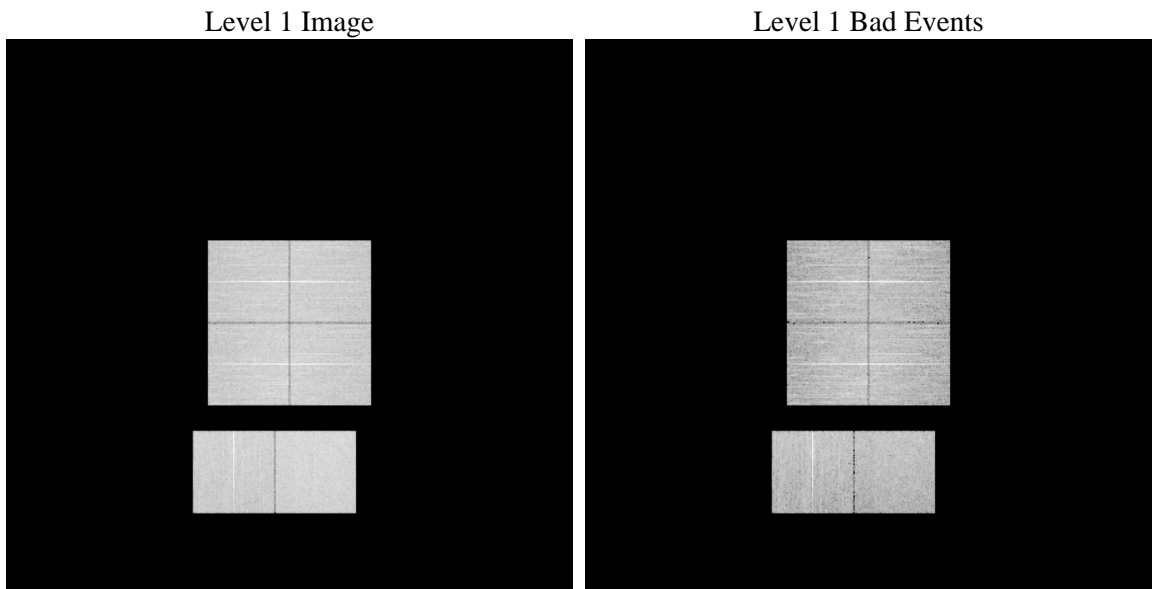
# 1 Front

seq_num	&#160	Sequence number
obs_id	56860	Observation id
title	ACIS-012367 diagnostics	Proposal title
observer	CHANDRA engineering request/realtime commanding	Principal investig
object	&#160	Source name
dtcycle	0	&#160
cycle	P	events from which exps? Prim/Second/Both
ra_targ	0.0	Observer's specified target RA [deg]
dec_targ	0.0	Observer's specified target Dec [deg]
ra_nom	344.46983202363	Nominal RA [deg]
dec_nom	30.487680275837	Nominal Dec [deg]
roll_nom	172.46915110938	Nominal Roll [deg]
revision	2	Processing version of data
ontime	7506.4111252427	Sum of GTIs [s]
livetime	7411.3604277567	Livetime [s]
ontime0	7506.3700852394	Sum of GTIs [s]
ontime1	7506.3290452361	Sum of GTIs [s]
ontime2	7503.0470644236	Sum of GTIs [s]
ontime3	7506.452165246	Sum of GTIs [s]
ontime6	7506.2469652295	Sum of GTIs [s]
ontime7	7506.4111252427	Sum of GTIs [s]
l2events	412685	Number of level 2 events

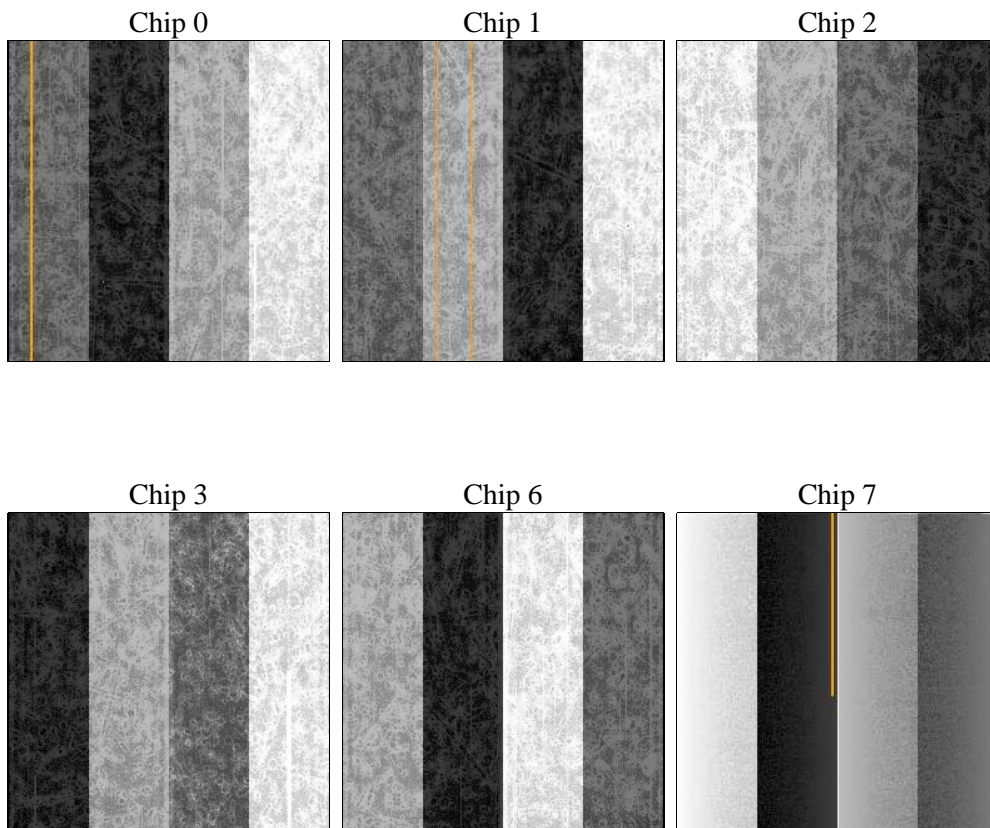
## 2 OBI

### 2.1 OBI

#### 2.1.1 Images



#### 2.1.2 Bias



### 2.1.3 Parameters

obi_num	0	Obi number	sched_exp_time	0.0	[s] Scheduled observation exposure time
ascdsver	8.4.5	Processing system revision	ontime	7506.4111252427	Sum of GTIs [s]
caldsver	4.4.10	&#160	ontime0	7506.3700852394	Sum of GTIs [s]
date	2012-06-12T15:45:36	Date and time of file creation	ontime1	7506.3290452361	Sum of GTIs [s]
revision	2	Processing version of data	ontime2	7503.0470644236	Sum of GTIs [s]
			ontime3	7506.452165246	Sum of GTIs [s]
			ontime6	7506.2469652295	Sum of GTIs [s]
			ontime7	7506.4111252427	Sum of GTIs [s]
			l1events	850344	Number of level 1 events

### 2.1.4 Events

	ccd 0	ccd 1	ccd 2	ccd 3	ccd 6	ccd 7		ccd 0	ccd 1	ccd 2	ccd 3	ccd 6	ccd 7
level 1 events	132556	133337	140288	137912	141280	164971	grade 0 events	35157	34538	36184	36461	35739	18046
rejected events	66213	66351	73778	71034	72432	64192		26%	25%	25%	26%	25%	10%
rejected %	49%	49%	52%	51%	51%	38%	grade 1 events	280	186	294	287	226	132
								0%	0%	0%	0%	0%	0%
							grade 2 events	12151	13114	11304	11727	12494	21915
								9%	9%	8%	8%	8%	13%
							grade 3 events	4399	4418	4571	4551	4472	9107
								3%	3%	3%	3%	3%	5%
							grade 4 events	4324	4439	4568	4514	4482	8942
								3%	3%	3%	3%	3%	5%
							grade 5 events	3764	3736	3379	4039	3963	10176
								2%	2%	2%	2%	2%	6%
							grade 6 events	10350	10501	9915	9654	11682	42807
								7%	7%	7%	7%	8%	25%
							grade 7 events	62131	62405	70073	66679	68222	53846
								46%	46%	49%	48%	48%	32%

## 2.2 Compared Parameters

Parameter	Planned	Actual	Parameter	Planned	Actual
Instrument	ACIS	ACIS	Obspar format version number	7	7
Detector	ACIS-012367	ACIS-012367	Obspar file type	PREDICTED	ACTUAL
Grating	NONE	NONE	Obspar update status	NONE	UPDATED
Data mode	FAINT	FAINT	Number of optional ACIS chips dropped	0	0
Observation mode	SECONDARY	SECONDARY	On-chip summing requested	N	N
[deg] Pointing RA	0	344.4698320236294	Subarray requested	NONE	NONE
[deg] Pointing Dec	0	30.4876802758367	Alternating exposures requested	N	N
[deg] Pointing Roll	0.0	172.469151109381	[s] Primary exposure time	3.2	3.2
[mm] SIM focus pos	-1.429586	-0.6828225247311905			
[mm] SIM defocus	0.1037507710433287	0.8505141146731063			
[mm] SIM translation stage pos	250.455976	250.466033080201			
[mm] SIM translation stage offset	0	-0.01005468664627074			
[s] Observation start time (MET)	368092048.815424	368092047.79042			
Observation start date	2009-08-31T07:47:29	2009-08-31T07:47:27			
[s] Observation end time (MET)	368103780.966012	368103779.94101			
Observation end date	2009-08-31T11:03:01	2009-08-31T11:02:59			
Read mode	TIMED	TIMED			

## 2.3 Star Slots

## 2.4 FID Slots

## **A Summary**

### **A.1 Status**

V&V Scientist	Jen Lauer
V&V Date (YYYY-MM-DD)	2012.06.15
V&V Edition	1
V&V Disposition and Status	OK
V&V Charge Time	7.5064111252427

### **A.2 Comments**