

V&V Reference Report

L2 ASCDS Version : 8.4.5

Observation 56851 - L2 Version 2
Chandra X-Ray Center

L2 Processing Date : Jun 13 2012

Contents

1	Front	2
2	OBI	3
2.1	OBI	3
2.1.1	Images	3
2.1.2	Bias	3
2.1.3	Parameters	4
2.1.4	Events	4
2.2	Compared Parameters	5
2.3	Star Slots	6
2.4	FID Slots	6
A	Summary	7
A.1	Status	7
A.2	Comments	7

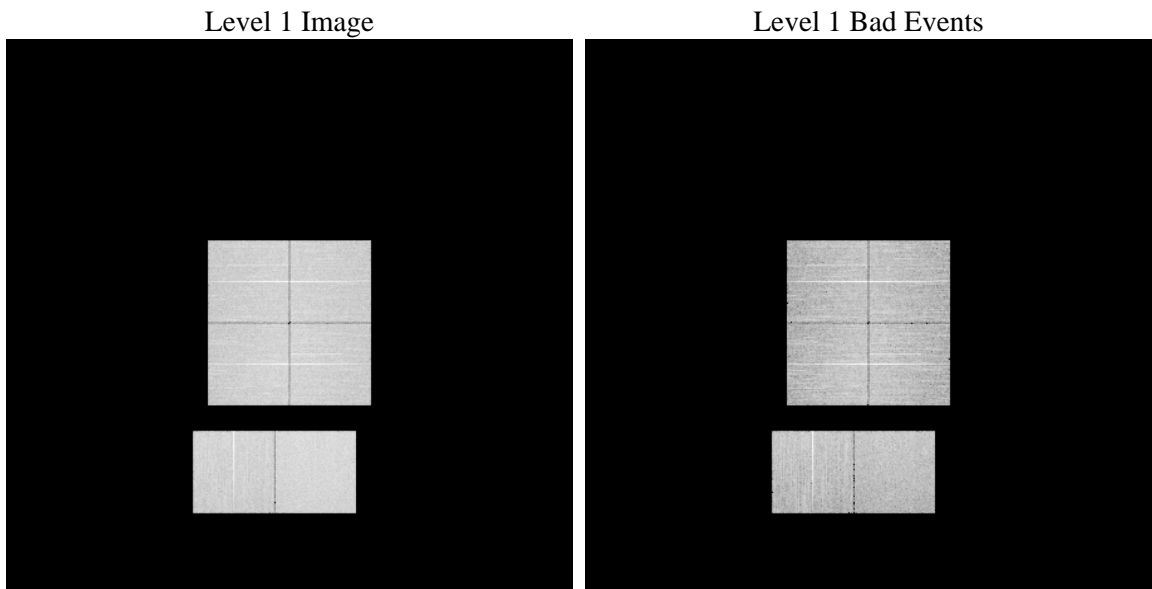
1 Front

seq_num	 	Sequence number
obs_id	56851	Observation id
title	ACIS-012367 diagnostics	Proposal title
observer	CHANDRA engineering request/realtime commanding	Principal investig
object	 	Source name
dtcycle	0	
cycle	P	events from which exps? Prim/Second/Both
ra_targ	0.0	Observer's specified target RA [deg]
dec_targ	0.0	Observer's specified target Dec [deg]
ra_nom	2.0320744936653	Nominal RA [deg]
dec_nom	5.3978516859484	Nominal Dec [deg]
roll_nom	123.19110933347	Nominal Roll [deg]
revision	2	Processing version of data
ontime	8038.3999701142	Sum of GTIs [s]
livetime	7936.6129095493	Livetime [s]
ontime0	8035.1589797735	Sum of GTIs [s]
ontime1	8038.3999701142	Sum of GTIs [s]
ontime2	8038.3999701142	Sum of GTIs [s]
ontime3	8038.3999701142	Sum of GTIs [s]
ontime6	8038.3999701142	Sum of GTIs [s]
ontime7	8038.3999701142	Sum of GTIs [s]
l2events	466715	Number of level 2 events

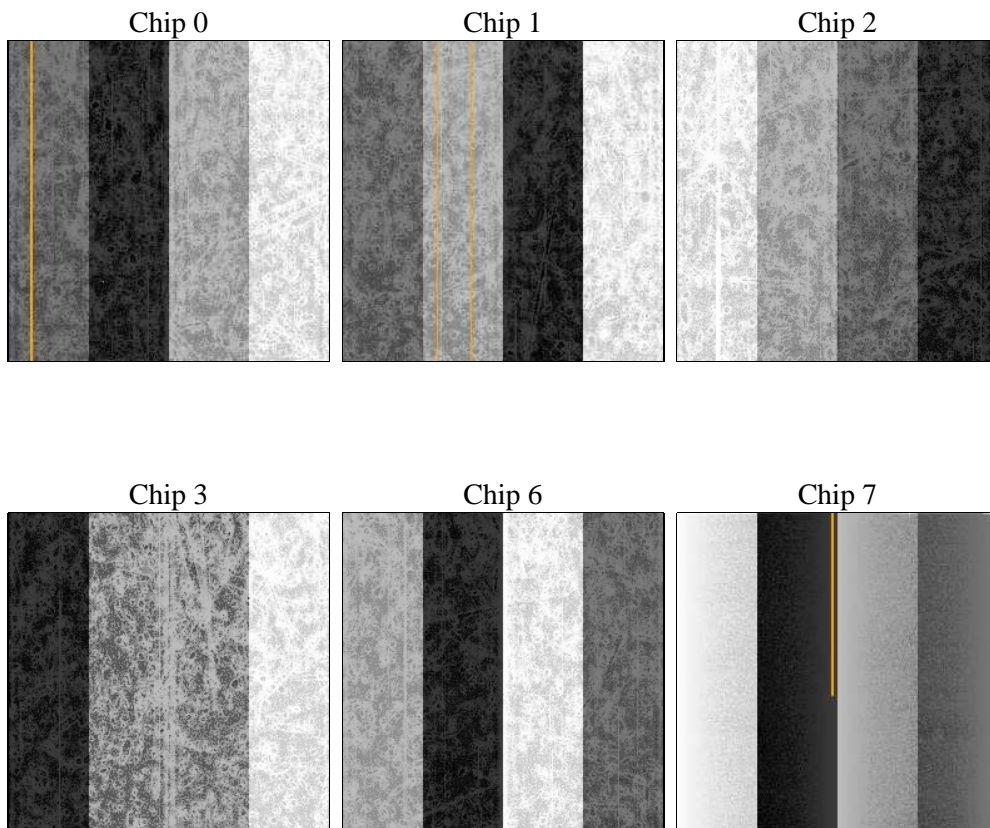
2 OBI

2.1 OBI

2.1.1 Images



2.1.2 Bias



2.1.3 Parameters

obi_num	0	Obi number	sched_exp_time	0.0	[s] Scheduled observation exposure time
ascdsver	8.4.5	Processing system revision	ontime	8038.3999701142	Sum of GTIs [s]
caldsver	4.4.10	 	ontime0	8035.1589797735	Sum of GTIs [s]
date	2012-06-13T03:02:17	Date and time of file creation	ontime1	8038.3999701142	Sum of GTIs [s]
revision	2	Processing version of data	ontime2	8038.3999701142	Sum of GTIs [s]
			ontime3	8038.3999701142	Sum of GTIs [s]
			ontime6	8038.3999701142	Sum of GTIs [s]
			ontime7	8038.3999701142	Sum of GTIs [s]
			l1events	961203	Number of level 1 events

2.1.4 Events

	ccd 0	ccd 1	ccd 2	ccd 3	ccd 6	ccd 7		ccd 0	ccd 1	ccd 2	ccd 3	ccd 6	ccd 7
level 1 events	150640	150353	155732	155795	161130	187553	grade 0 events	41679	40672	42088	42666	42155	21715
rejected events	75027	74460	80653	79896	82411	75170		27%	27%	27%	27%	26%	11%
rejected %	49%	49%	51%	51%	51%	40%	grade 1 events	296	260	353	357	301	173
								0%	0%	0%	0%	0%	0%
							grade 2 events	14103	14978	13422	13518	14544	25422
								9%	9%	8%	8%	9%	13%
							grade 3 events	5264	5140	5371	5466	5194	10645
								3%	3%	3%	3%	3%	5%
							grade 4 events	5279	5244	5231	5375	5241	10546
								3%	3%	3%	3%	3%	5%
							grade 5 events	4182	4402	3862	4536	4437	11722
								2%	2%	2%	2%	2%	6%
							grade 6 events	11888	12467	11417	11521	14251	47617
								7%	8%	7%	7%	8%	25%
							grade 7 events	67949	67190	73988	72356	75007	59713
								45%	44%	47%	46%	46%	31%

2.2 Compared Parameters

Parameter	Planned	Actual
Instrument	ACIS	ACIS
Detector	ACIS-012367	ACIS-012367
Grating	NONE	NONE
Data mode	FAINT	FAINT
Observation mode	SECONDARY	SECONDARY
[deg] Pointing RA	0	2.032074493665331
[deg] Pointing Dec	0	5.397851685948391
[deg] Pointing Roll	0.0	123.1911093334705
[mm] SIM focus pos	-0.78090834371673	-0.78090834371673
[mm] SIM defocus	0.7524282194390134	0.7524282194390134
[mm] SIM translation stage pos	250.4660330802	250.4660330802
[mm] SIM translation stage offset	-0.01005726120527584	-0.01005726120527584
[s] Observation start time (MET)	368510090.986375	368510090.986375
Observation start date	2009-09-05T03:54:51	2009-09-05T03:54:50
[s] Observation end time (MET)	368519639.961054	368519639.961054
Observation end date	2009-09-05T06:34:00	2009-09-05T06:33:59
Read mode	TIMED	TIMED

Parameter	Planned	Actual
Obspar format version number	7	7
Obspar file type	PREDICTED	ACTUAL
Obspar update status	OVERRIDE	OVERRIDE
Number of optional ACIS chips dropped	0	0
On-chip summing requested	N	N
Subarray requested	NONE	NONE
Alternating exposures requested	N	N
[s] Primary exposure time	3.2	3.2

2.3 Star Slots

2.4 FID Slots

A Summary

A.1 Status

V&V Scientist	Jen Lauer
V&V Date (YYYY-MM-DD)	2012.06.15
V&V Edition	1
V&V Disposition and Status	OK
V&V Charge Time	8.0383999701142

A.2 Comments