

# V&V Reference Report

## L2 ASCDS Version : 8.4.5

Observation 56790 - L2 Version 2  
Chandra X-Ray Center

L2 Processing Date : Jun 14 2012

## Contents

<b>1</b>	<b>Front</b>	<b>2</b>
<b>2</b>	<b>OBI</b>	<b>3</b>
2.1	OBI . . . . .	3
2.1.1	Images . . . . .	3
2.1.2	Bias . . . . .	3
2.1.3	Parameters . . . . .	4
2.1.4	Events . . . . .	4
2.2	Compared Parameters . . . . .	5
2.3	Star Slots . . . . .	6
2.4	FID Slots . . . . .	6
<b>A</b>	<b>Summary</b>	<b>7</b>
A.1	Status . . . . .	7
A.2	Comments . . . . .	7

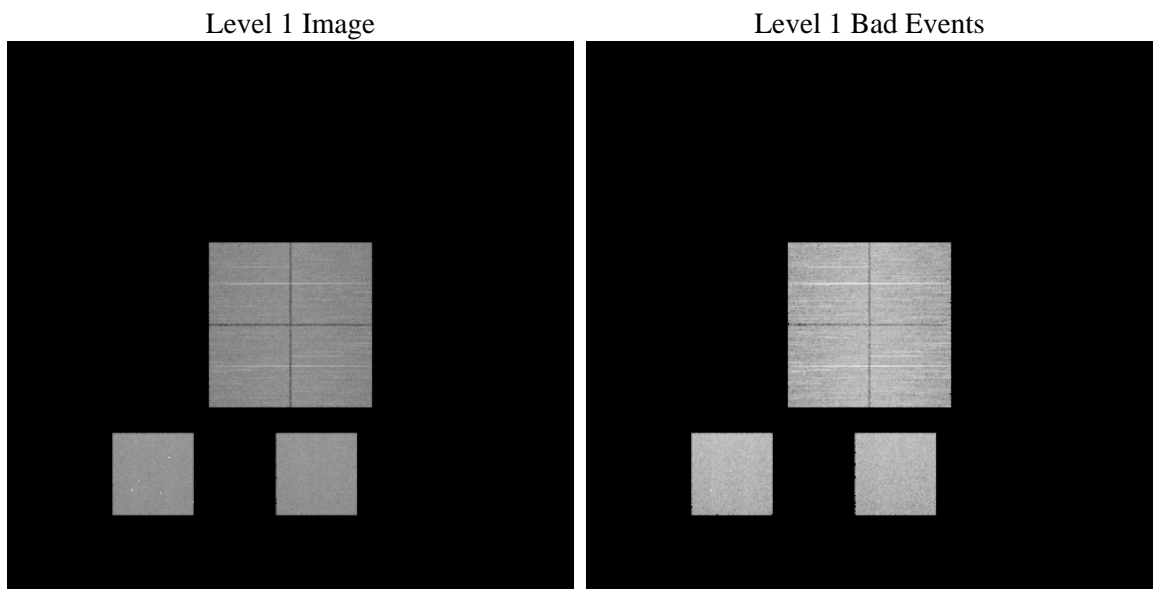
# 1 Front

seq_num	&#160	Sequence number
obs_id	56790	Observation id
title	ACIS-012357 diagnostics	Proposal title
observer	CHANDRA engineering request/realtime commanding	Principal investig
object	&#160	Source name
dtcycle	0	&#160
cycle	P	events from which exps? Prim/Second/Both
ra_targ	0.0	Observer's specified target RA [deg]
dec_targ	0.0	Observer's specified target Dec [deg]
ra_nom	34.67324134788	Nominal RA [deg]
dec_nom	1.2064545949808	Nominal Dec [deg]
roll_nom	104.85226760637	Nominal Roll [deg]
revision	2	Processing version of data
ontime	7990.399970293	Sum of GTIs [s]
livetime	7889.220714628	Livetime [s]
ontime0	7987.1589800715	Sum of GTIs [s]
ontime1	7990.399970293	Sum of GTIs [s]
ontime2	7983.9181092978	Sum of GTIs [s]
ontime3	7990.399970293	Sum of GTIs [s]
ontime5	7990.399970293	Sum of GTIs [s]
ontime7	7990.399970293	Sum of GTIs [s]
l2events	477485	Number of level 2 events

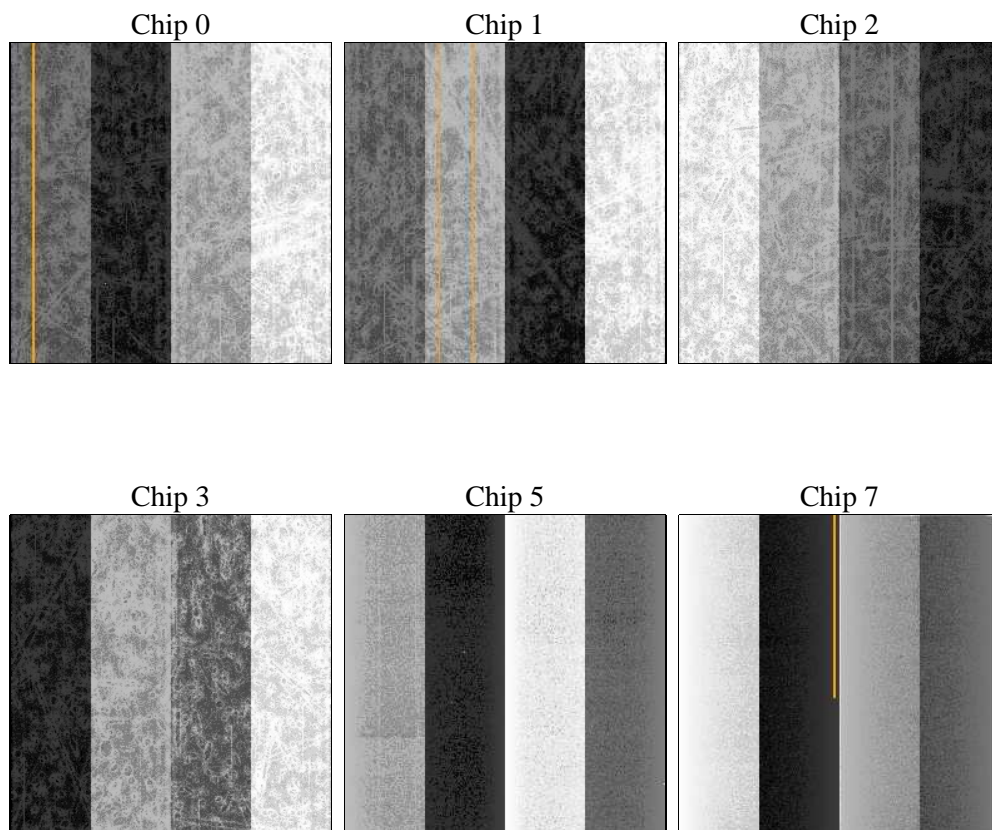
## 2 OBI

### 2.1 OBI

#### 2.1.1 Images



#### 2.1.2 Bias



### 2.1.3 Parameters

obi_num	0	Obi number	sched_exp_time	0.0	[s] Scheduled observation exposure time
ascdsver	8.4.5	Processing system revision	ontime	7990.399970293	Sum of GTIs [s]
caldsver	4.4.10	&#160	ontime0	7987.1589800715	Sum of GTIs [s]
date	2012-06-14T14:37:29	Date and time of file creation	ontime1	7990.399970293	Sum of GTIs [s]
revision	2	Processing version of data	ontime2	7983.9181092978	Sum of GTIs [s]
			ontime3	7990.399970293	Sum of GTIs [s]
			ontime5	7990.399970293	Sum of GTIs [s]
			ontime7	7990.399970293	Sum of GTIs [s]
			l1events	972748	Number of level 1 events

### 2.1.4 Events

	ccd 0	ccd 1	ccd 2	ccd 3	ccd 5	ccd 7		ccd 0	ccd 1	ccd 2	ccd 3	ccd 5	ccd 7
level 1 events	147305	144253	150509	153575	191839	185267	grade 0 events	39009	38092	39668	39608	18288	20461
rejected events	76919	73657	79852	82968	79058	76199		26%	26%	26%	25%	9%	11%
rejected %	52%	51%	53%	54%	41%	41%	grade 1 events	281	236	343	306	249	178
								0%	0%	0%	0%	0%	0%
							grade 2 events	13222	13867	12708	12808	41024	24457
								8%	9%	8%	8%	21%	13%
							grade 3 events	4983	5062	5033	5087	5284	10294
								3%	3%	3%	3%	2%	5%
							grade 4 events	4834	4797	5129	4995	5229	10268
								3%	3%	3%	3%	2%	5%
							grade 5 events	4336	4288	3839	4685	10241	11769
								2%	2%	2%	3%	5%	6%
							grade 6 events	10907	11221	10571	10697	46898	47353
								7%	7%	7%	6%	24%	25%
							grade 7 events	69733	66690	73218	75389	64626	60487
								47%	46%	48%	49%	33%	32%

## 2.2 Compared Parameters

Parameter	Planned	Actual
Instrument	ACIS	ACIS
Detector	ACIS-012357	ACIS-012357
Grating	NONE	NONE
Data mode	FAINT	FAINT
Observation mode	SECONDARY	SECONDARY
[deg] Pointing RA	0	34.67324134787975
[deg] Pointing Dec	0	1.206454594980762
[deg] Pointing Roll	0.0	104.8522676063729
[mm] SIM focus pos	-0.78090834371673	-0.78090834371673
[mm] SIM defocus	0.7524282194390134	0.7524282194390134
[mm] SIM translation stage pos	250.4660330802	250.4660330802
[mm] SIM translation stage offset	-0.01005726120527584	-0.01005726120527584
[s] Observation start time (MET)	371022938.062562	371022938.062562
Observation start date	2009-10-04T05:55:38	2009-10-04T05:55:38
[s] Observation end time (MET)	371032486.299683	371032486.299683
Observation end date	2009-10-04T08:34:46	2009-10-04T08:34:46
Read mode	TIMED	TIMED

Parameter	Planned	Actual
Obspar format version number	7	7
Obspar file type	PREDICTED	ACTUAL
Obspar update status	OVERRIDE	OVERRIDE
Number of optional ACIS chips dropped	0	0
On-chip summing requested	N	N
Subarray requested	NONE	NONE
Alternating exposures requested	N	N
[s] Primary exposure time	3.2	3.2

## 2.3 Star Slots

## 2.4 FID Slots

## A Summary

### A.1 Status

V&V Scientist	Beth Sundheim
V&V Date (YYYY-MM-DD)	2012.06.18
V&V Edition	1
V&V Disposition and Status	OK
V&V Charge Time	7.990399970293

### A.2 Comments