

# V&V Reference Report

## L2 ASCDS Version : 8.4.5

Observation 56727 - L2 Version 2  
Chandra X-Ray Center

L2 Processing Date : Jun 15 2012

## Contents

<b>1</b>	<b>Front</b>	<b>2</b>
<b>2</b>	<b>OBI</b>	<b>3</b>
2.1	OBI . . . . .	3
2.1.1	Images . . . . .	3
2.1.2	Bias . . . . .	3
2.1.3	Parameters . . . . .	4
2.1.4	Events . . . . .	4
2.2	Compared Parameters . . . . .	5
2.3	Star Slots . . . . .	6
2.4	FID Slots . . . . .	6
<b>A</b>	<b>Summary</b>	<b>7</b>
A.1	Status . . . . .	7
A.2	Comments . . . . .	7

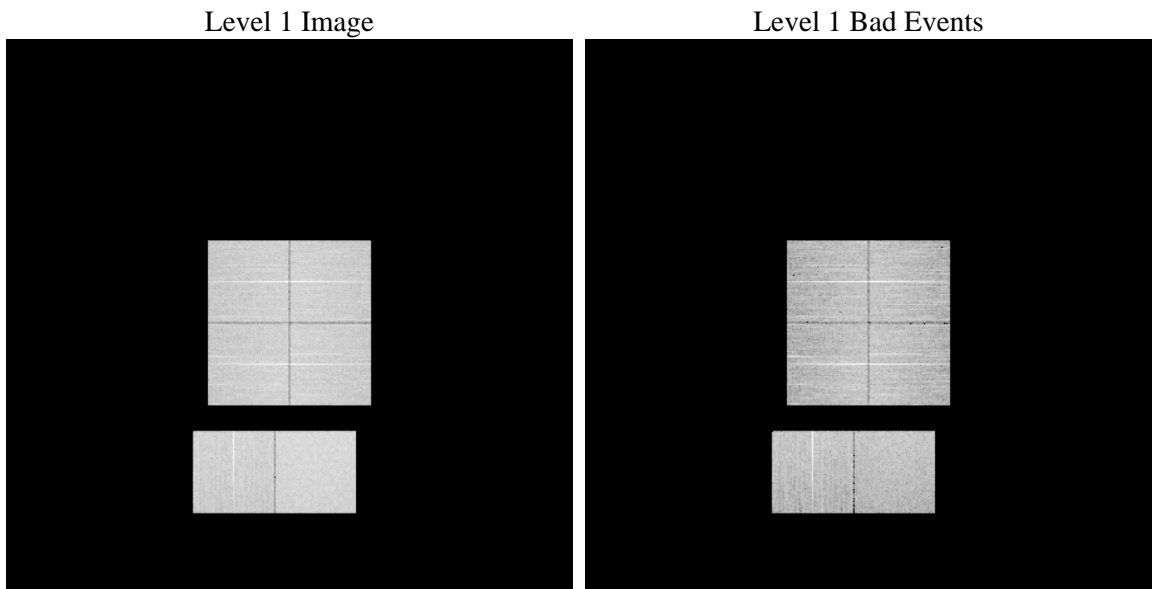
# 1 Front

seq_num	&#160	Sequence number
obs_id	56727	Observation id
title	ACIS-012367 diagnostics	Proposal title
observer	CHANDRA engineering request/realtime commanding	Principal investig
object	&#160	Source name
dtcycle	0	&#160
cycle	P	events from which exps? Prim/Second/Both
ra_targ	0.0	Observer's specified target RA [deg]
dec_targ	0.0	Observer's specified target Dec [deg]
ra_nom	48.85555107593	Nominal RA [deg]
dec_nom	-5.6229070304297	Nominal Dec [deg]
roll_nom	45.996328850513	Nominal Roll [deg]
revision	2	Processing version of data
ontime	8185.5999695659	Sum of GTIs [s]
livetime	8081.9489739747	Livetime [s]
ontime0	8185.5999695659	Sum of GTIs [s]
ontime1	8185.5999695659	Sum of GTIs [s]
ontime2	8185.5999695659	Sum of GTIs [s]
ontime3	8185.5999695659	Sum of GTIs [s]
ontime6	8185.5999695659	Sum of GTIs [s]
ontime7	8185.5999695659	Sum of GTIs [s]
l2events	441474	Number of level 2 events

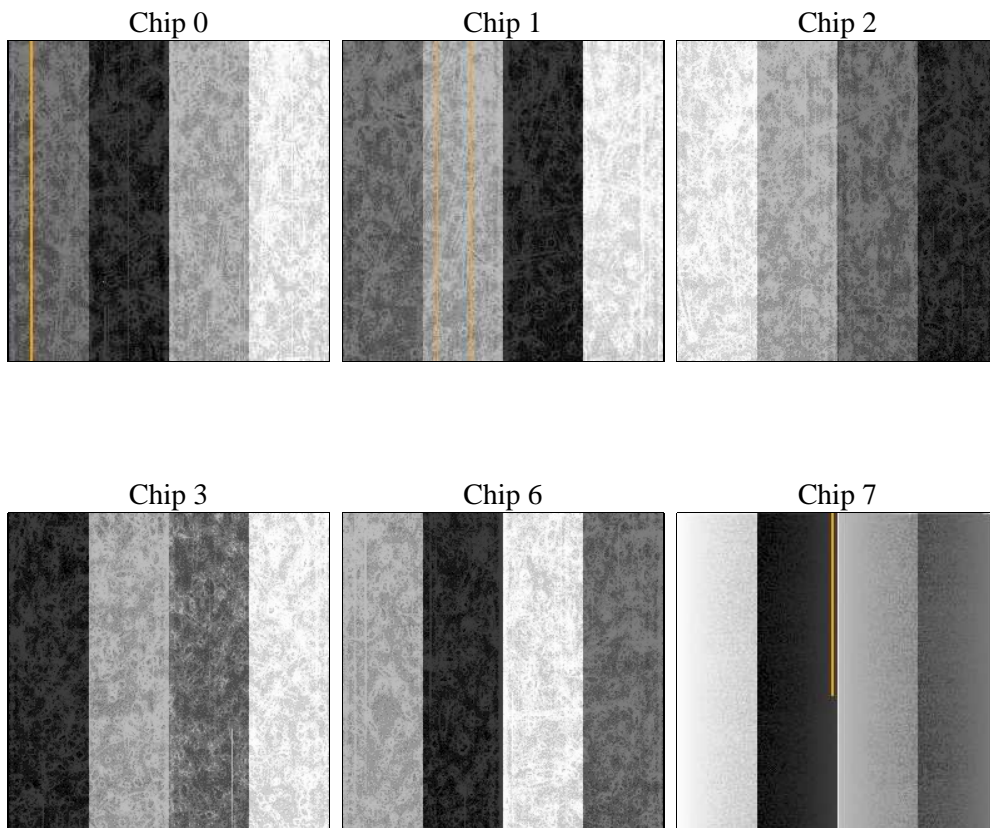
## 2 OBI

### 2.1 OBI

#### 2.1.1 Images



#### 2.1.2 Bias



### 2.1.3 Parameters

obi_num	0	Obi number	sched_exp_time	0.0	[s] Scheduled observation exposure time
ascdsver	8.4.5	Processing system revision	ontime	8185.5999695659	Sum of GTIs [s]
caldsver	4.4.10	&#160	ontime0	8185.5999695659	Sum of GTIs [s]
date	2012-06-15T08:06:11	Date and time of file creation	ontime1	8185.5999695659	Sum of GTIs [s]
revision	2	Processing version of data	ontime2	8185.5999695659	Sum of GTIs [s]
			ontime3	8185.5999695659	Sum of GTIs [s]
			ontime6	8185.5999695659	Sum of GTIs [s]
			ontime7	8185.5999695659	Sum of GTIs [s]
			l1events	920531	Number of level 1 events

### 2.1.4 Events

	ccd 0	ccd 1	ccd 2	ccd 3	ccd 6	ccd 7		ccd 0	ccd 1	ccd 2	ccd 3	ccd 6	ccd 7
level 1 events	142343	147633	146254	149667	151923	182711	grade 0 events	38097	37332	38986	38640	38652	19945
rejected events	71497	76651	75381	79050	78321	72625		26%	25%	26%	25%	25%	10%
rejected %	50%	51%	51%	52%	51%	39%	grade 1 events	264	252	298	300	272	178
								0%	0%	0%	0%	0%	0%
							grade 2 events	12836	13515	12451	12554	13300	24152
								9%	9%	8%	8%	8%	13%
							grade 3 events	4937	4760	4947	4933	4914	10123
								3%	3%	3%	3%	3%	5%
							grade 4 events	4745	4750	4947	4955	4845	10198
								3%	3%	3%	3%	3%	5%
							grade 5 events	4130	4295	3837	4551	4431	11679
								2%	2%	2%	3%	2%	6%
							grade 6 events	10953	11326	10254	10267	12679	46728
								7%	7%	7%	6%	8%	25%
							grade 7 events	66381	71403	70534	73467	72830	59708
								46%	48%	48%	49%	47%	32%

## 2.2 Compared Parameters

Parameter	Planned	Actual
Instrument	ACIS	ACIS
Detector	ACIS-012367	ACIS-012367
Grating	NONE	NONE
Data mode	FAINT	FAINT
Observation mode	SECONDARY	SECONDARY
[deg] Pointing RA	0	48.85555107592958
[deg] Pointing Dec	0	-5.622907030429747
[deg] Pointing Roll	0.0	45.99632885051324
[mm] SIM focus pos	-0.68282252473119	-0.68282252473119
[mm] SIM defocus	0.8505140384245534	0.8505140384245534
[mm] SIM translation stage pos	250.4660330802	250.4660330802
[mm] SIM translation stage offset	-0.01005726120527584	-0.01005726120527584
[s] Observation start time (MET)	372894770.606753	372894770.606753
Observation start date	2009-10-25T21:52:51	2009-10-25T21:52:50
[s] Observation end time (MET)	372904587.353128	372904587.353128
Observation end date	2009-10-26T00:36:27	2009-10-26T00:36:27
Read mode	TIMED	TIMED

Parameter	Planned	Actual
Obspar format version number	7	7
Obspar file type	PREDICTED	ACTUAL
Obspar update status	OVERRIDE	OVERRIDE
Number of optional ACIS chips dropped	0	0
On-chip summing requested	N	N
Subarray requested	NONE	NONE
Alternating exposures requested	N	N
[s] Primary exposure time	3.2	3.2

## 2.3 Star Slots

## 2.4 FID Slots

## **A Summary**

### **A.1 Status**

V&V Scientist	Jen Lauer
V&V Date (YYYY-MM-DD)	2012.06.19
V&V Edition	1
V&V Disposition and Status	OK
V&V Charge Time	8.1855999695659

### **A.2 Comments**