

# V&V Reference Report

## L2 ASCDS Version : 8.4.5

Observation 56707 - L2 Version 2  
Chandra X-Ray Center

L2 Processing Date : Jun 16 2012

## Contents

<b>1</b>	<b>Front</b>	<b>2</b>
<b>2</b>	<b>OBI</b>	<b>3</b>
2.1	OBI . . . . .	3
2.1.1	Images . . . . .	3
2.1.2	Bias . . . . .	3
2.1.3	Parameters . . . . .	4
2.1.4	Events . . . . .	4
2.2	Compared Parameters . . . . .	5
2.3	Star Slots . . . . .	6
2.4	FID Slots . . . . .	6
<b>A</b>	<b>Summary</b>	<b>7</b>
A.1	Status . . . . .	7
A.2	Comments . . . . .	7

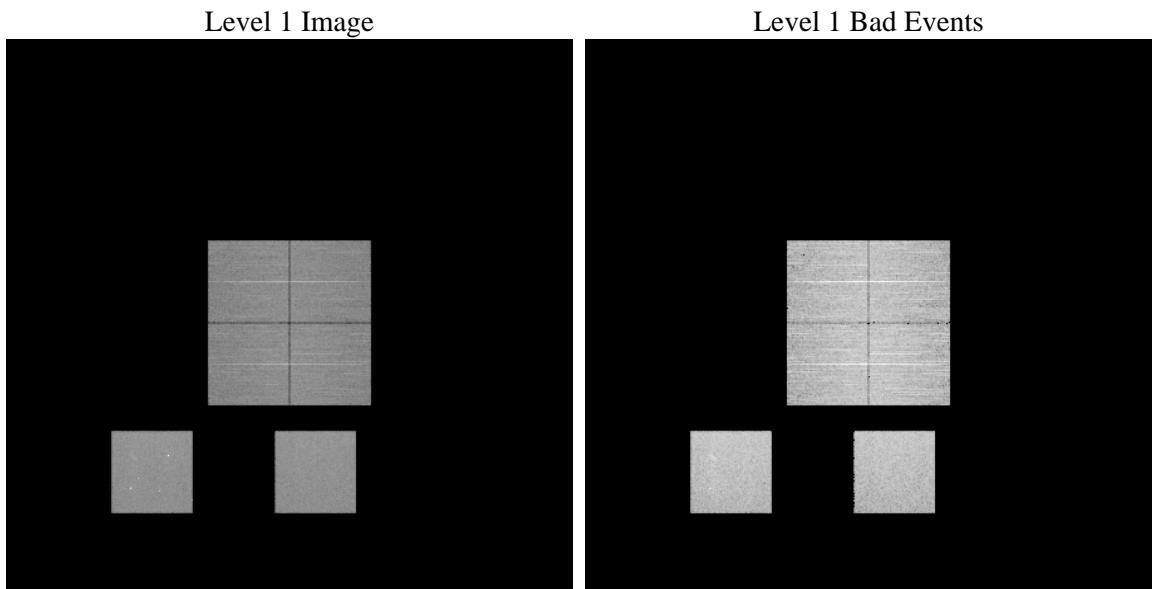
# 1 Front

seq_num	&#160	Sequence number
obs_id	56707	Observation id
title	ACIS-012357 diagnostics	Proposal title
observer	CHANDRA engineering request/realtime commanding	Principal investig
object	&#160	Source name
dtcycle	0	&#160
cycle	P	events from which exps? Prim/Second/Both
ra_targ	0.0	Observer's specified target RA [deg]
dec_targ	0.0	Observer's specified target Dec [deg]
ra_nom	41.998456582495	Nominal RA [deg]
dec_nom	15.801397749516	Nominal Dec [deg]
roll_nom	87.160654517445	Nominal Roll [deg]
revision	2	Processing version of data
ontime	8038.3999701142	Sum of GTIs [s]
livetime	7936.6129095493	Livetime [s]
ontime0	8038.3999701142	Sum of GTIs [s]
ontime1	8038.3999701142	Sum of GTIs [s]
ontime2	8038.3999701142	Sum of GTIs [s]
ontime3	8038.3999701142	Sum of GTIs [s]
ontime5	8038.3999701142	Sum of GTIs [s]
ontime7	8038.3999701142	Sum of GTIs [s]
l2events	473049	Number of level 2 events

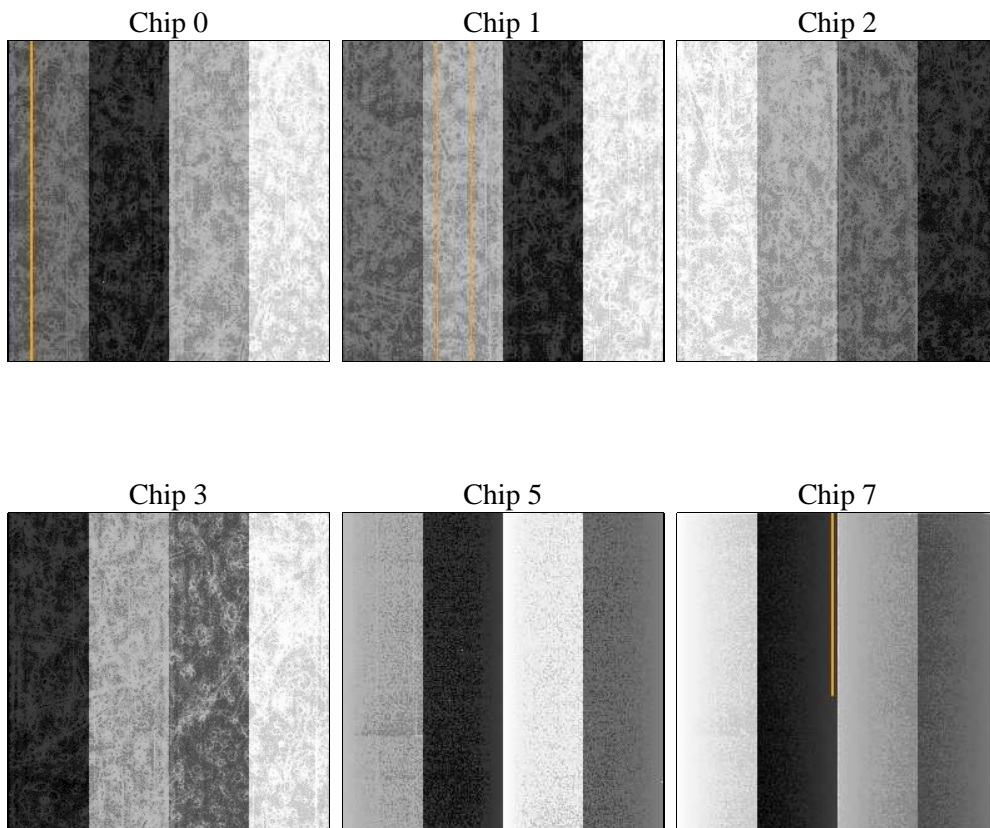
## 2 OBI

### 2.1 OBI

#### 2.1.1 Images



#### 2.1.2 Bias



### 2.1.3 Parameters

obi_num	0	Obi number	sched_exp_time	0.0	[s] Scheduled observation exposure time
ascdsver	8.4.5	Processing system revision	ontime	8038.3999701142	Sum of GTIs [s]
caldsver	4.4.10	&#160	ontime0	8038.3999701142	Sum of GTIs [s]
date	2012-06-16T03:30:31	Date and time of file creation	ontime1	8038.3999701142	Sum of GTIs [s]
revision	2	Processing version of data	ontime2	8038.3999701142	Sum of GTIs [s]
			ontime3	8038.3999701142	Sum of GTIs [s]
			ontime5	8038.3999701142	Sum of GTIs [s]
			ontime7	8038.3999701142	Sum of GTIs [s]
			l1events	942832	Number of level 1 events

### 2.1.4 Events

	ccd 0	ccd 1	ccd 2	ccd 3	ccd 5	ccd 7		ccd 0	ccd 1	ccd 2	ccd 3	ccd 5	ccd 7
level 1 events	141130	140182	143939	151610	186088	179883	grade 0 events	36892	36593	37813	38244	17957	20174
rejected events	72144	70123	74529	81490	74068	71081		26%	26%	26%	25%	9%	11%
rejected %	51%	50%	51%	53%	39%	39%	grade 1 events	277	228	332	309	259	162
								0%	0%	0%	0%	0%	0%
							grade 2 events	12807	13271	12163	12537	38950	23896
								9%	9%	8%	8%	20%	13%
							grade 3 events	4752	4862	4897	4827	5195	10114
								3%	3%	3%	3%	2%	5%
							grade 4 events	4491	4712	4801	4779	5103	9963
								3%	3%	3%	3%	2%	5%
							grade 5 events	4067	4169	3869	4443	10208	11671
								2%	2%	2%	2%	5%	6%
							grade 6 events	10617	11192	10332	10288	45760	45528
								7%	7%	7%	6%	24%	25%
							grade 7 events	67227	65155	69732	76183	62656	58375
								47%	46%	48%	50%	33%	32%

## 2.2 Compared Parameters

Parameter	Planned	Actual
Instrument	ACIS	ACIS
Detector	ACIS-012357	ACIS-012357
Grating	NONE	NONE
Data mode	FAINT	FAINT
Observation mode	SECONDARY	SECONDARY
[deg] Pointing RA	0	41.99845658249541
[deg] Pointing Dec	0	15.80139774951568
[deg] Pointing Roll	0.0	87.16065451744456
[mm] SIM focus pos	-0.68282252473119	-0.68282252473119
[mm] SIM defocus	0.8505140384245534	0.8505140384245534
[mm] SIM translation stage pos	250.4660330802	250.4660330802
[mm] SIM translation stage offset	-0.01005726120527584	-0.01005726120527584
[s] Observation start time (MET)	373764891.100582	373764891.100582
Observation start date	2009-11-04T23:34:51	2009-11-04T23:34:51
[s] Observation end time (MET)	373774267.791595	373774267.791595
Observation end date	2009-11-05T02:11:08	2009-11-05T02:11:07
Read mode	TIMED	TIMED

Parameter	Planned	Actual
Obspar format version number	7	7
Obspar file type	PREDICTED	ACTUAL
Obspar update status	OVERRIDE	OVERRIDE
Number of optional ACIS chips dropped	0	0
On-chip summing requested	N	N
Subarray requested	NONE	NONE
Alternating exposures requested	N	N
[s] Primary exposure time	3.2	3.2

## 2.3 Star Slots

## 2.4 FID Slots

## **A Summary**

### **A.1 Status**

V&V Scientist	Jen Lauer
V&V Date (YYYY-MM-DD)	2012.06.20
V&V Edition	1
V&V Disposition and Status	OK
V&V Charge Time	8.0383999701142

### **A.2 Comments**