

V&V Reference Report

L2 ASCDS Version : 8.4.5

Observation 56687 - L2 Version 2
Chandra X-Ray Center

L2 Processing Date : Jun 16 2012

Contents

1	Front	2
2	OBI	3
2.1	OBI	3
2.1.1	Images	3
2.1.2	Bias	3
2.1.3	Parameters	4
2.1.4	Events	4
2.2	Compared Parameters	5
2.3	Star Slots	6
2.4	FID Slots	6
A	Summary	7
A.1	Status	7
A.2	Comments	7

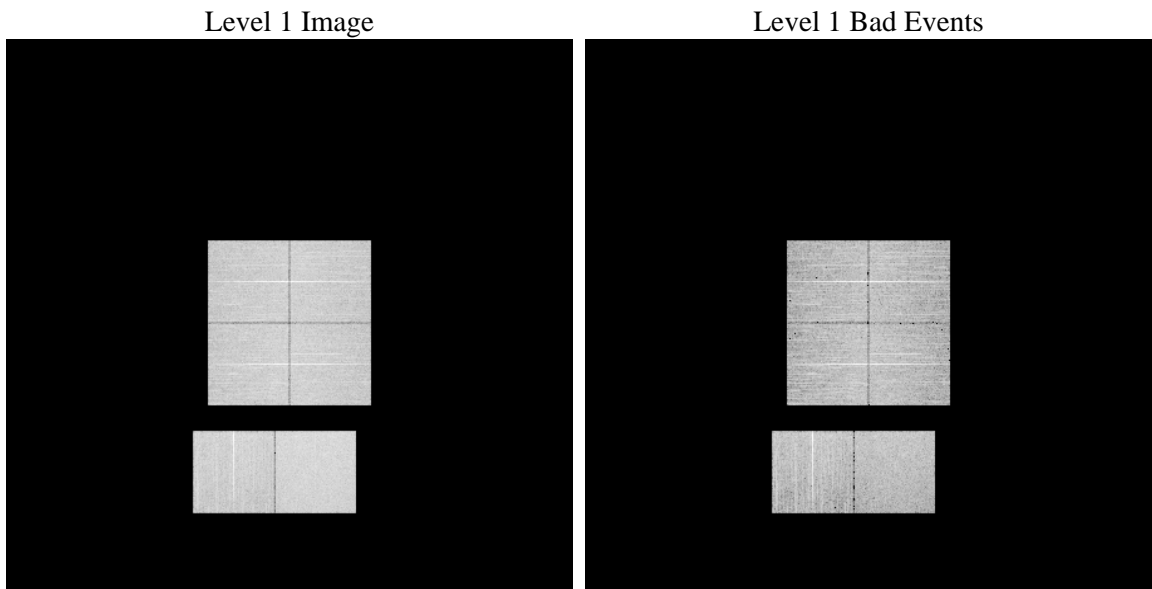
1 Front

seq_num	 	Sequence number
obs_id	56687	Observation id
title	ACIS-012367 diagnostics	Proposal title
observer	CHANDRA engineering request/realtime commanding	Principal investig
object	 	Source name
dtcycle	0	
cycle	P	events from which exps? Prim/Second/Both
ra_targ	0.0	Observer's specified target RA [deg]
dec_targ	0.0	Observer's specified target Dec [deg]
ra_nom	55.016564223839	Nominal RA [deg]
dec_nom	-4.9765470867664	Nominal Dec [deg]
roll_nom	22.089411569241	Nominal Roll [deg]
revision	2	Processing version of data
ontime	6910.8638125658	Sum of GTIs [s]
livetime	6823.3542937485	Livetime [s]
ontime0	6910.8227725625	Sum of GTIs [s]
ontime1	6910.7817325592	Sum of GTIs [s]
ontime2	6910.7406925559	Sum of GTIs [s]
ontime3	6910.9048525691	Sum of GTIs [s]
ontime6	6910.6996525526	Sum of GTIs [s]
ontime7	6910.8638125658	Sum of GTIs [s]
l2events	369528	Number of level 2 events

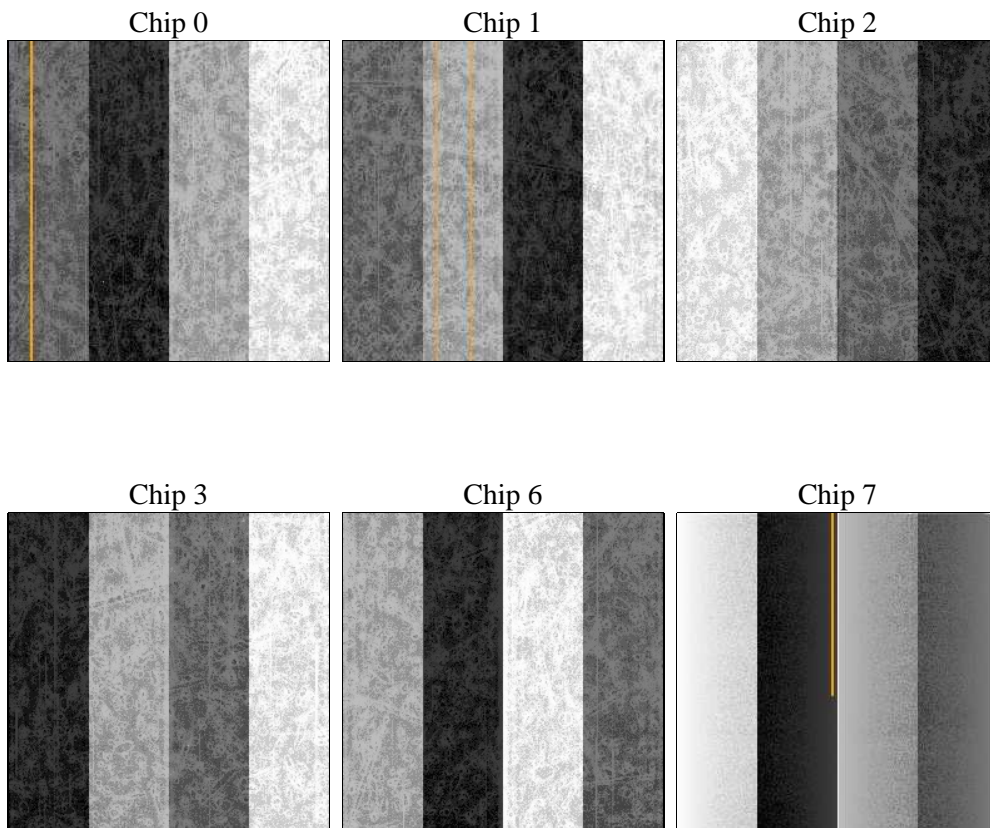
2 OBI

2.1 OBI

2.1.1 Images



2.1.2 Bias



2.1.3 Parameters

obi_num	0	Obi number	sched_exp_time	0.0	[s] Scheduled observation exposure time
ascdsver	8.4.5	Processing system revision	ontime	6910.8638125658	Sum of GTIs [s]
caldsver	4.4.10	 	ontime0	6910.8227725625	Sum of GTIs [s]
date	2012-06-16T15:33:20	Date and time of file creation	ontime1	6910.7817325592	Sum of GTIs [s]
revision	2	Processing version of data	ontime2	6910.7406925559	Sum of GTIs [s]
			ontime3	6910.9048525691	Sum of GTIs [s]
			ontime6	6910.6996525526	Sum of GTIs [s]
			ontime7	6910.8638125658	Sum of GTIs [s]
			l1events	764361	Number of level 1 events

2.1.4 Events

	ccd 0	ccd 1	ccd 2	ccd 3	ccd 6	ccd 7		ccd 0	ccd 1	ccd 2	ccd 3	ccd 6	ccd 7
level 1 events	118994	119172	123691	121723	128609	152172	grade 0 events	31412	30891	31839	32407	32120	16413
rejected events	59804	59754	64670	61927	67137	60087		26%	25%	25%	26%	24%	10%
rejected %	50%	50%	52%	50%	52%	39%	grade 1 events	248	243	240	267	186	108
								0%	0%	0%	0%	0%	0%
							grade 2 events	10844	11376	10299	10337	11022	20116
								9%	9%	8%	8%	8%	13%
							grade 3 events	3989	3878	4080	4201	4175	8470
								3%	3%	3%	3%	3%	5%
							grade 4 events	3897	3977	4011	4122	3955	8311
								3%	3%	3%	3%	3%	5%
							grade 5 events	3593	3620	3220	3845	3636	9783
								3%	3%	2%	3%	2%	6%
							grade 6 events	9069	9314	8819	8753	10224	38826
								7%	7%	7%	7%	7%	25%
							grade 7 events	55942	55873	61183	57791	63291	50145
								47%	46%	49%	47%	49%	32%

2.2 Compared Parameters

Parameter	Planned	Actual	Parameter	Planned	Actual
Instrument	ACIS	ACIS	Obspar format version number	7	7
Detector	ACIS-012367	ACIS-012367	Obspar file type	PREDICTED	ACTUAL
Grating	NONE	NONE	Obspar update status	NONE	UPDATED
Data mode	FAINT	FAINT	Number of optional ACIS chips dropped	0	0
Observation mode	SECONDARY	SECONDARY	On-chip summing requested	N	N
[deg] Pointing RA	0	55.01656422383935	Subarray requested	NONE	NONE
[deg] Pointing Dec	0	-4.976547086766444	Alternating exposures requested	N	N
[deg] Pointing Roll	0.0	22.08941156924089	[s] Primary exposure time	3.2	3.2
[mm] SIM focus pos	-1.429586	-0.7809083437167272			
[mm] SIM defocus	0.1037507710433287	0.7524282956875696			
[mm] SIM translation stage pos	250.455976	250.466033080201			
[mm] SIM translation stage offset	0	-0.01005468664627074			
[s] Observation start time (MET)	374265544.175822	374265543.15082			
Observation start date	2009-11-10T18:39:04	2009-11-10T18:39:03			
[s] Observation end time (MET)	374274184.926258	374274183.90125			
Observation end date	2009-11-10T21:03:05	2009-11-10T21:03:03			
Read mode	TIMED	TIMED			

2.3 Star Slots

2.4 FID Slots

A Summary

A.1 Status

V&V Scientist	Jen Lauer
V&V Date (YYYY-MM-DD)	2012.06.20
V&V Edition	1
V&V Disposition and Status	OK
V&V Charge Time	6.9108638125658

A.2 Comments