

# V&V Reference Report

## L2 ASCDS Version : 8.4.5

Observation 56678 - L2 Version 2  
Chandra X-Ray Center

L2 Processing Date : Jun 16 2012

## Contents

<b>1</b>	<b>Front</b>	<b>2</b>
<b>2</b>	<b>OBI</b>	<b>3</b>
2.1	OBI . . . . .	3
2.1.1	Images . . . . .	3
2.1.2	Bias . . . . .	3
2.1.3	Parameters . . . . .	4
2.1.4	Events . . . . .	4
2.2	Compared Parameters . . . . .	5
2.3	Star Slots . . . . .	6
2.4	FID Slots . . . . .	6
<b>A</b>	<b>Summary</b>	<b>7</b>
A.1	Status . . . . .	7
A.2	Comments . . . . .	7

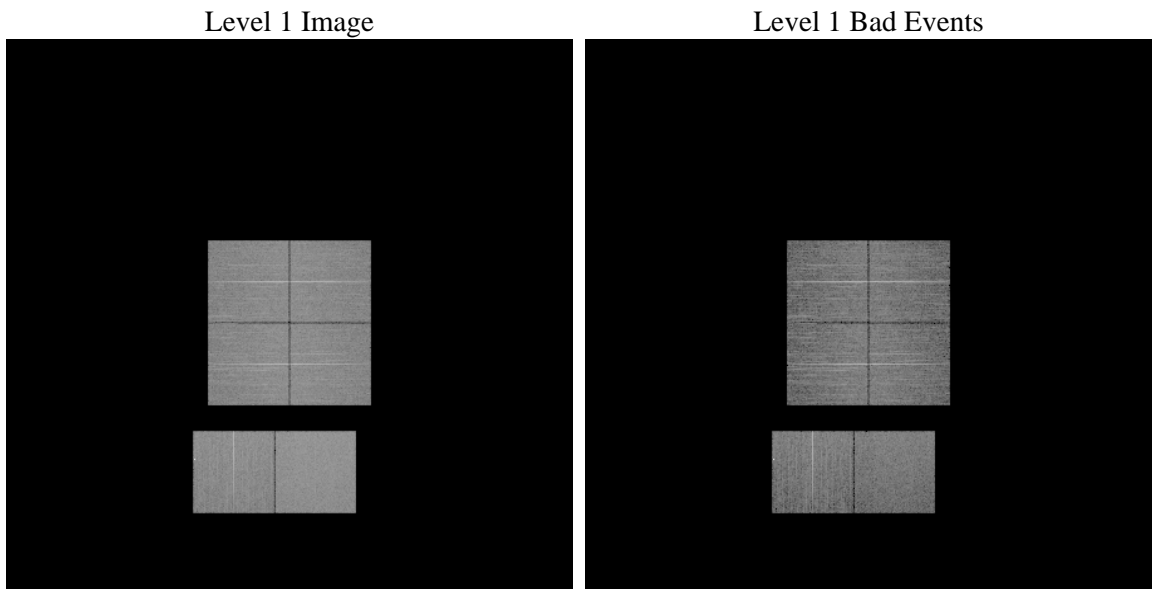
# 1 Front

seq_num	&#160	Sequence number
obs_id	56678	Observation id
title	ACIS-012367 diagnostics	Proposal title
observer	CHANDRA engineering request/realtime commanding	Principal investig
object	&#160	Source name
dtcycle	0	&#160
cycle	P	events from which exps? Prim/Second/Both
ra_targ	0.0	Observer's specified target RA [deg]
dec_targ	0.0	Observer's specified target Dec [deg]
ra_nom	42.927811951472	Nominal RA [deg]
dec_nom	-5.49241003253	Nominal Dec [deg]
roll_nom	342.32048364692	Nominal Roll [deg]
revision	2	Processing version of data
ontime	8271.7567902207	Sum of GTIs [s]
livetime	8167.014825089	Livetime [s]
ontime0	8271.7157502174	Sum of GTIs [s]
ontime1	8271.6747102141	Sum of GTIs [s]
ontime2	8271.6336702108	Sum of GTIs [s]
ontime3	8271.797830224	Sum of GTIs [s]
ontime6	8271.5926302075	Sum of GTIs [s]
ontime7	8271.7567902207	Sum of GTIs [s]
l2events	442531	Number of level 2 events

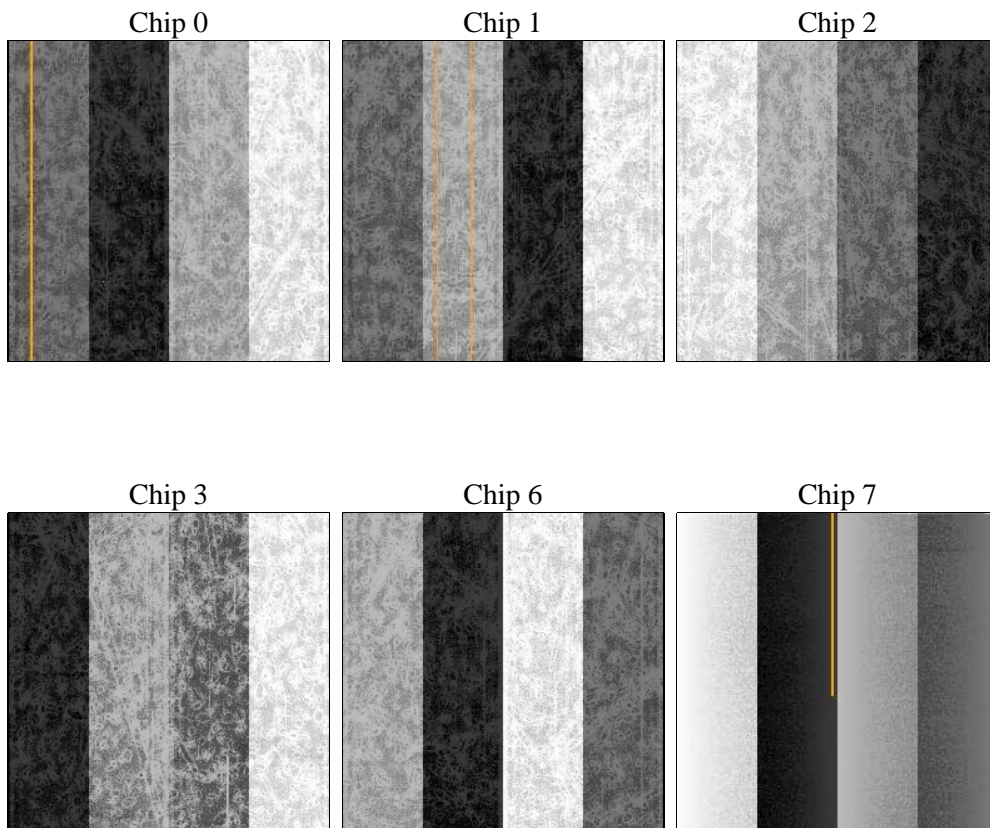
## 2 OBI

### 2.1 OBI

#### 2.1.1 Images



#### 2.1.2 Bias



### 2.1.3 Parameters

obi_num	0	Obi number	sched_exp_time	0.0	[s] Scheduled observation exposure time
ascdsver	8.4.5	Processing system revision	ontime	8271.7567902207	Sum of GTIs [s]
caldsver	4.4.10	&#160	ontime0	8271.7157502174	Sum of GTIs [s]
date	2012-06-16T18:34:03	Date and time of file creation	ontime1	8271.6747102141	Sum of GTIs [s]
revision	2	Processing version of data	ontime2	8271.6336702108	Sum of GTIs [s]
			ontime3	8271.797830224	Sum of GTIs [s]
			ontime6	8271.5926302075	Sum of GTIs [s]
			ontime7	8271.7567902207	Sum of GTIs [s]
			l1events	921807	Number of level 1 events

### 2.1.4 Events

	ccd 0	ccd 1	ccd 2	ccd 3	ccd 6	ccd 7		ccd 0	ccd 1	ccd 2	ccd 3	ccd 6	ccd 7
level 1 events	143749	143308	149217	148043	154697	182793	grade 0 events	37520	36780	37879	38950	38355	19936
rejected events	73324	72389	78533	76291	81107	72123		26%	25%	25%	26%	24%	10%
rejected %	51%	50%	52%	51%	52%	39%	grade 1 events	298	233	318	348	2479	158
								0%	0%	0%	0%	1%	0%
							grade 2 events	12755	13413	12486	12496	13368	23932
								8%	9%	8%	8%	8%	13%
							grade 3 events	4732	4656	4963	4928	4862	10297
								3%	3%	3%	3%	3%	5%
							grade 4 events	4701	4817	4888	4944	4758	10306
								3%	3%	3%	3%	3%	5%
							grade 5 events	4193	4309	4095	4581	4538	11747
								2%	3%	2%	3%	2%	6%
							grade 6 events	10744	11276	10497	10472	12283	46243
								7%	7%	7%	7%	7%	25%
							grade 7 events	68806	67824	74091	71324	74054	60174
								47%	47%	49%	48%	47%	32%

## 2.2 Compared Parameters

Parameter	Planned	Actual
Instrument	ACIS	ACIS
Detector	ACIS-012367	ACIS-012367
Grating	NONE	NONE
Data mode	FAINT	FAINT
Observation mode	SECONDARY	SECONDARY
[deg] Pointing RA	0	42.92781195147165
[deg] Pointing Dec	0	-5.49241003253003
[deg] Pointing Roll	0.0	342.3204836469176
[mm] SIM focus pos	-1.429586	-0.6828225247311905
[mm] SIM defocus	0.1037507710433287	0.8505141146731063
[mm] SIM translation stage pos	250.455976	250.466033080201
[mm] SIM translation stage offset	0	-0.01005468664627074
[s] Observation start time (MET)	374679055.84666	374679054.82167
Observation start date	2009-11-15T13:30:56	2009-11-15T13:30:54
[s] Observation end time (MET)	374688366.94713	374688365.92214
Observation end date	2009-11-15T16:06:07	2009-11-15T16:06:05
Read mode	TIMED	TIMED

Parameter	Planned	Actual
Obspar format version number	7	7
Obspar file type	PREDICTED	ACTUAL
Obspar update status	NONE	UPDATED
Number of optional ACIS chips dropped	0	0
On-chip summing requested	N	N
Subarray requested	NONE	NONE
Alternating exposures requested	N	N
[s] Primary exposure time	3.2	3.2

## **2.3 Star Slots**

## **2.4 FID Slots**

## A Summary

### A.1 Status

V&V Scientist	Jen Lauer
V&V Date (YYYY-MM-DD)	2012.06.20
V&V Edition	1
V&V Disposition and Status	OK
V&V Charge Time	8.2717567902207

### A.2 Comments