

V&V Reference Report

L2 ASCDS Version : 8.4.5

Observation 56582 - L2 Version 2
Chandra X-Ray Center

L2 Processing Date : Jun 18 2012

Contents

1	Front	2
2	OBI	3
2.1	OBI	3
2.1.1	Images	3
2.1.2	Bias	3
2.1.3	Parameters	4
2.1.4	Events	4
2.2	Compared Parameters	5
2.3	Star Slots	6
2.4	FID Slots	6
A	Summary	7
A.1	Status	7
A.2	Comments	7

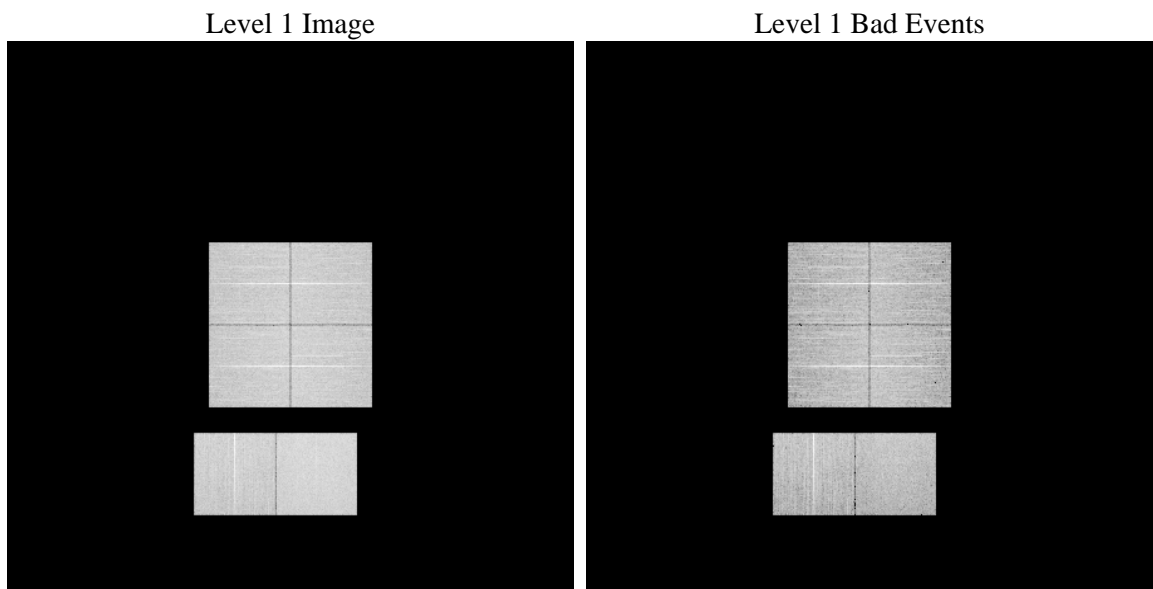
1 Front

seq_num	 	Sequence number
obs_id	56582	Observation id
title	ACIS-012367 diagnostics	Proposal title
observer	CHANDRA engineering request/realtime commanding	Principal investig
object	 	Source name
dtcycle	0	
cycle	P	events from which exps? Prim/Second/Both
ra_targ	0.0	Observer's specified target RA [deg]
dec_targ	0.0	Observer's specified target Dec [deg]
ra_nom	65.000765962783	Nominal RA [deg]
dec_nom	40.467854985207	Nominal Dec [deg]
roll_nom	231.37715209199	Nominal Roll [deg]
revision	2	Processing version of data
ontime	8271.4270706773	Sum of GTIs [s]
livetime	8166.6892806529	Livetime [s]
ontime0	8271.386030674	Sum of GTIs [s]
ontime1	8271.3449906707	Sum of GTIs [s]
ontime2	8271.3039506674	Sum of GTIs [s]
ontime3	8271.4681106806	Sum of GTIs [s]
ontime6	8271.2629106641	Sum of GTIs [s]
ontime7	8271.4270706773	Sum of GTIs [s]
l2events	434984	Number of level 2 events

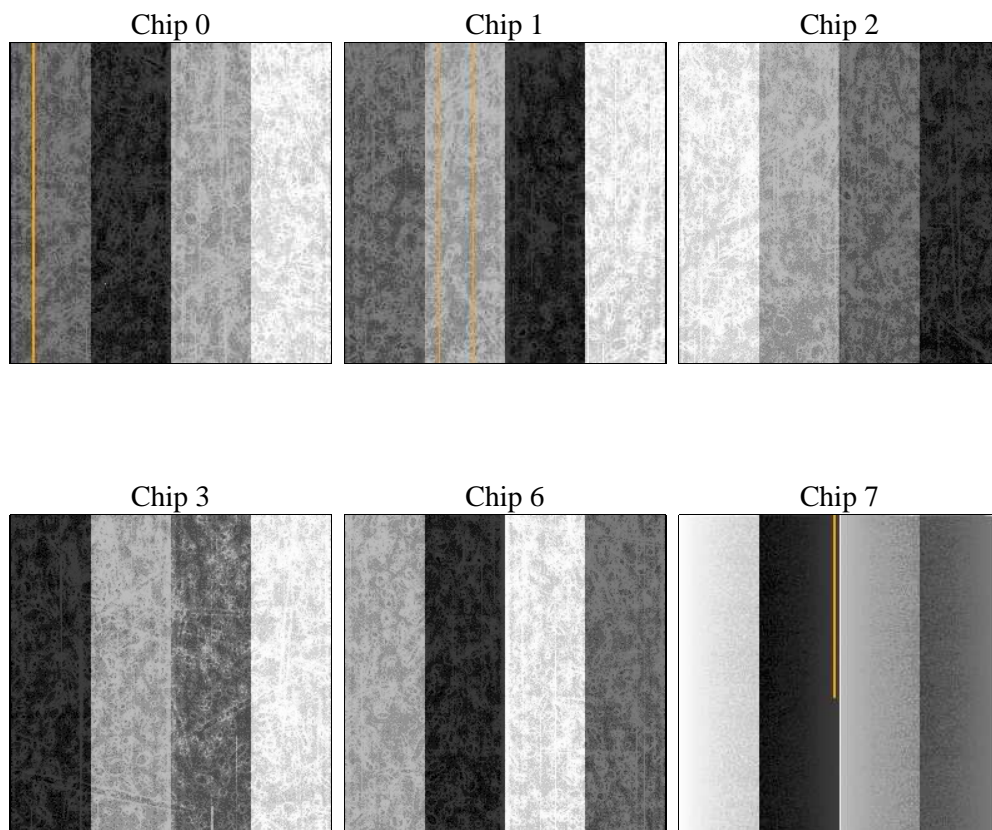
2 OBI

2.1 OBI

2.1.1 Images



2.1.2 Bias



2.1.3 Parameters

obi_num	0	Obi number	sched_exp_time	0.0	[s] Scheduled observation exposure time
ascdsver	8.4.5	Processing system revision	ontime	8271.4270706773	Sum of GTIs [s]
caldsver	4.4.10	 	ontime0	8271.386030674	Sum of GTIs [s]
date	2012-06-18T08:28:55	Date and time of file creation	ontime1	8271.3449906707	Sum of GTIs [s]
revision	2	Processing version of data	ontime2	8271.3039506674	Sum of GTIs [s]
			ontime3	8271.4681106806	Sum of GTIs [s]
			ontime6	8271.2629106641	Sum of GTIs [s]
			ontime7	8271.4270706773	Sum of GTIs [s]
			l1events	913594	Number of level 1 events

2.1.4 Events

	ccd 0	ccd 1	ccd 2	ccd 3	ccd 6	ccd 7		ccd 0	ccd 1	ccd 2	ccd 3	ccd 6	ccd 7
level 1 events	142462	141318	144922	150555	151217	183120	grade 0 events	36725	36464	37430	37706	37301	19430
rejected events	73023	71128	75516	80667	79532	73548		25%	25%	25%	25%	24%	10%
rejected %	51%	50%	52%	53%	52%	40%	grade 1 events	259	250	327	331	248	148
								0%	0%	0%	0%	0%	0%
							grade 2 events	12616	13072	12287	12265	12787	23692
								8%	9%	8%	8%	8%	12%
							grade 3 events	4778	4709	4855	4920	4776	10035
								3%	3%	3%	3%	3%	5%
							grade 4 events	4785	4688	4757	4806	4811	9996
								3%	3%	3%	3%	3%	5%
							grade 5 events	4109	4312	3940	4612	4557	11767
								2%	3%	2%	3%	3%	6%
							grade 6 events	10550	11285	10104	10218	12039	46452
								7%	7%	6%	6%	7%	25%
							grade 7 events	68640	66538	71222	75697	74698	61600
								48%	47%	49%	50%	49%	33%

2.2 Compared Parameters

Parameter	Planned	Actual	Parameter	Planned	Actual
Instrument	ACIS	ACIS	Obspar format version number	7	7
Detector	ACIS-012367	ACIS-012367	Obspar file type	PREDICTED	ACTUAL
Grating	NONE	NONE	Obspar update status	NONE	UPDATED
Data mode	FAINT	FAINT	Number of optional ACIS chips dropped	0	0
Observation mode	SECONDARY	SECONDARY	On-chip summing requested	N	N
[deg] Pointing RA	0	65.00076596278259	Subarray requested	NONE	NONE
[deg] Pointing Dec	0	40.46785498520658	Alternating exposures requested	N	N
[deg] Pointing Roll	0.0	231.3771520919931	[s] Primary exposure time	3.2	3.2
[mm] SIM focus pos	-1.429586	-0.6828225247311905			
[mm] SIM defocus	0.1037507710433287	0.8505141146731063			
[mm] SIM translation stage pos	250.455976	250.466033080201			
[mm] SIM translation stage offset	0	-0.01005468664627074			
[s] Observation start time (MET)	377460163.886984	377460162.86199			
Observation start date	2009-12-17T18:02:44	2009-12-17T18:02:42			
[s] Observation end time (MET)	377473287.987648	377473286.96265			
Observation end date	2009-12-17T21:41:28	2009-12-17T21:41:26			
Read mode	TIMED	TIMED			

2.3 Star Slots

2.4 FID Slots

A Summary

A.1 Status

V&V Scientist	Beth Sundheim
V&V Date (YYYY-MM-DD)	2012.06.21
V&V Edition	1
V&V Disposition and Status	OK
V&V Charge Time	8.2714270706773

A.2 Comments