

V&V Reference Report

L2 ASCDS Version : 8.4.4

Observation 57993 - L2 Version 2
Chandra X-Ray Center

L2 Processing Date : May 8 2012

Contents

1	Front	2
2	OBI	3
2.1	OBI	3
2.1.1	Images	3
2.1.2	Bias	3
2.1.3	Parameters	4
2.1.4	Events	4
2.2	Compared Parameters	5
2.3	Star Slots	6
2.4	FID Slots	6
A	Summary	7
A.1	Status	7
A.2	Comments	7

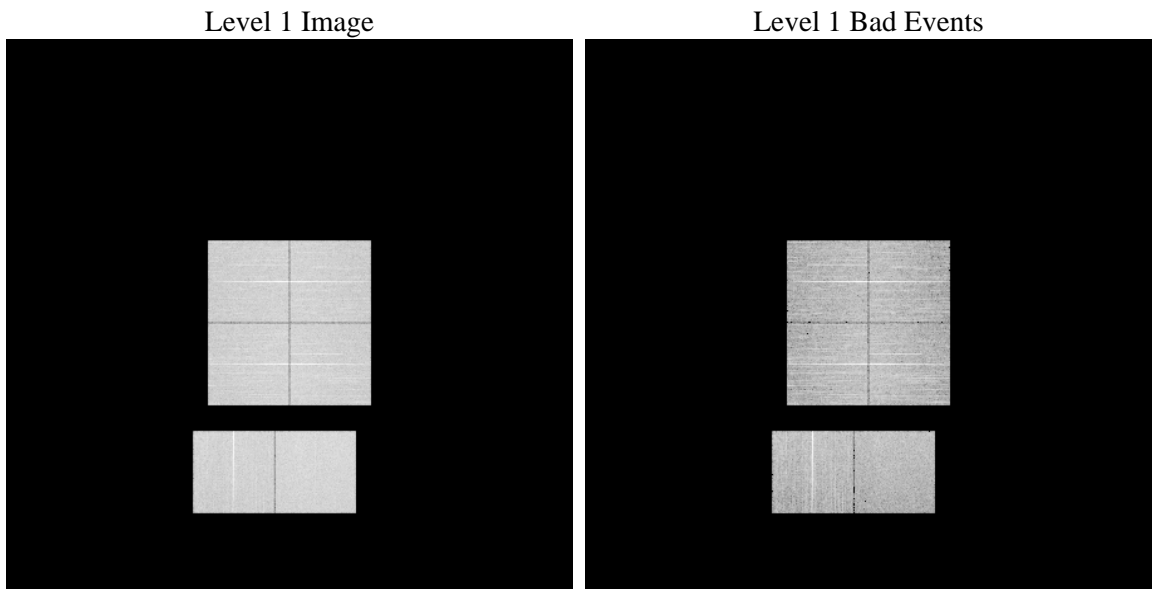
1 Front

seq_num	 	Sequence number
obs_id	57993	Observation id
title	ACIS-012367 diagnostics	Proposal title
observer	CHANDRA engineering request/realtime commanding	Principal investig
object	 	Source name
dtcycle	0	
cycle	P	events from which exps? Prim/Second/Both
ra_targ	0.0	Observer's specified target RA [deg]
dec_targ	0.0	Observer's specified target Dec [deg]
ra_nom	155.99795042067	Nominal RA [deg]
dec_nom	6.0286630417935	Nominal Dec [deg]
roll_nom	61.235390051574	Nominal Roll [deg]
revision	2	Processing version of data
ontime	7795.1999710202	Sum of GTIs [s]
livetime	7696.4924552813	Livetime [s]
ontime0	7795.1999710202	Sum of GTIs [s]
ontime1	7795.1999710202	Sum of GTIs [s]
ontime2	7795.1999710202	Sum of GTIs [s]
ontime3	7795.1999710202	Sum of GTIs [s]
ontime6	7795.1999710202	Sum of GTIs [s]
ontime7	7795.1999710202	Sum of GTIs [s]
l2events	601901	Number of level 2 events

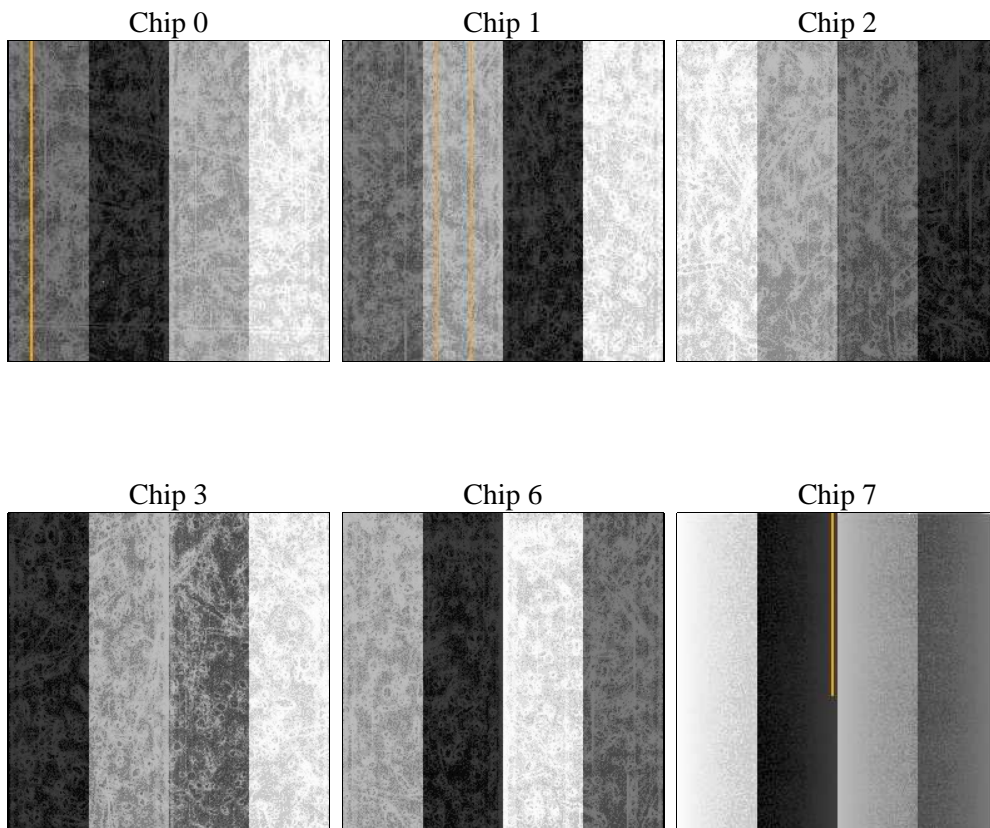
2 OBI

2.1 OBI

2.1.1 Images



2.1.2 Bias



2.1.3 Parameters

obi_num	0	Obi number	sched_exp_time	0.0	[s] Scheduled observation exposure time
ascdsver	8.4.4	Processing system revision	ontime	7795.1999710202	Sum of GTIs [s]
caldsver	4.4.9	 	ontime0	7795.1999710202	Sum of GTIs [s]
date	2012-05-08T18:14:10	Date and time of file creation	ontime1	7795.1999710202	Sum of GTIs [s]
revision	2	Processing version of data	ontime2	7795.1999710202	Sum of GTIs [s]
			ontime3	7795.1999710202	Sum of GTIs [s]
			ontime6	7795.1999710202	Sum of GTIs [s]
			ontime7	7795.1999710202	Sum of GTIs [s]
			l1events	1053145	Number of level 1 events

2.1.4 Events

	ccd 0	ccd 1	ccd 2	ccd 3	ccd 6	ccd 7		ccd 0	ccd 1	ccd 2	ccd 3	ccd 6	ccd 7
level 1 events	165841	167110	173645	174790	176197	195562	grade 0 events	53728	53070	55050	55857	54674	26488
rejected events	66908	67220	74062	74196	72773	62951		32%	31%	31%	31%	31%	13%
rejected %	40%	40%	42%	42%	41%	32%	grade 1 events	360	284	410	437	313	158
								0%	0%	0%	0%	0%	0%
							grade 2 events	17447	18724	16919	17101	18398	29022
								10%	11%	9%	9%	10%	14%
							grade 3 events	6550	6434	6650	6662	6585	12569
								3%	3%	3%	3%	3%	6%
							grade 4 events	6443	6456	6701	6630	6662	12525
								3%	3%	3%	3%	3%	6%
							grade 5 events	3680	3941	3632	4116	4147	10397
								2%	2%	2%	2%	2%	5%
							grade 6 events	14815	15248	14308	14391	17154	52064
								8%	9%	8%	8%	9%	26%
							grade 7 events	62818	62953	69975	69596	68264	52339
								37%	37%	40%	39%	38%	26%

2.2 Compared Parameters

Parameter	Planned	Actual	Parameter	Planned	Actual
Instrument	ACIS	ACIS	Obspar format version number	7	7
Detector	ACIS-012367	ACIS-012367	Obspar file type	PREDICTED	ACTUAL
Grating	NONE	NONE	Obspar update status	NONE	UPDATED
Data mode	FAINT	FAINT	On-chip summing requested	N	N
Observation mode	SECONDARY	SECONDARY	Subarray requested	NONE	NONE
[deg] Pointing RA	0	155.9979504206652	Alternating exposures requested	N	N
[deg] Pointing Dec	0	6.028663041793526	[s] Primary exposure time	3.2	3.2
[deg] Pointing Roll	0.0	61.23539005157389			
[mm] SIM focus pos	-0.782348	-0.7809083437167272			
[mm] SIM defocus	0	0.7524282956875696			
[mm] SIM translation stage pos	-233.592463	250.466033080201			
[mm] SIM translation stage offset	0	-0.01005468664627074			
[s] Observation start time (MET)	318012966.085561	318012965.06056			
Observation start date	2008-01-29T16:56:06	2008-01-29T16:56:05			
[s] Observation end time (MET)	318028287.786304	318028286.7613			
Observation end date	2008-01-29T21:11:28	2008-01-29T21:11:26			
Read mode	TIMED	TIMED			

2.3 Star Slots

2.4 FID Slots

A Summary

A.1 Status

V&V Scientist	Jen Lauer
V&V Date (YYYY-MM-DD)	2012.05.10
V&V Edition	1
V&V Disposition and Status	OK
V&V Charge Time	7.7951999710202

A.2 Comments