

# V&V Reference Report

## L2 ASCDS Version : 8.4.4

Observation 57989 - L2 Version 2  
Chandra X-Ray Center

L2 Processing Date : May 9 2012

## Contents

<b>1</b>	<b>Front</b>	<b>2</b>
<b>2</b>	<b>OBI</b>	<b>3</b>
2.1	OBI . . . . .	3
2.1.1	Images . . . . .	3
2.1.2	Bias . . . . .	3
2.1.3	Parameters . . . . .	4
2.1.4	Events . . . . .	4
2.2	Compared Parameters . . . . .	5
2.3	Star Slots . . . . .	6
2.4	FID Slots . . . . .	6
<b>A</b>	<b>Summary</b>	<b>7</b>
A.1	Status . . . . .	7
A.2	Comments . . . . .	7

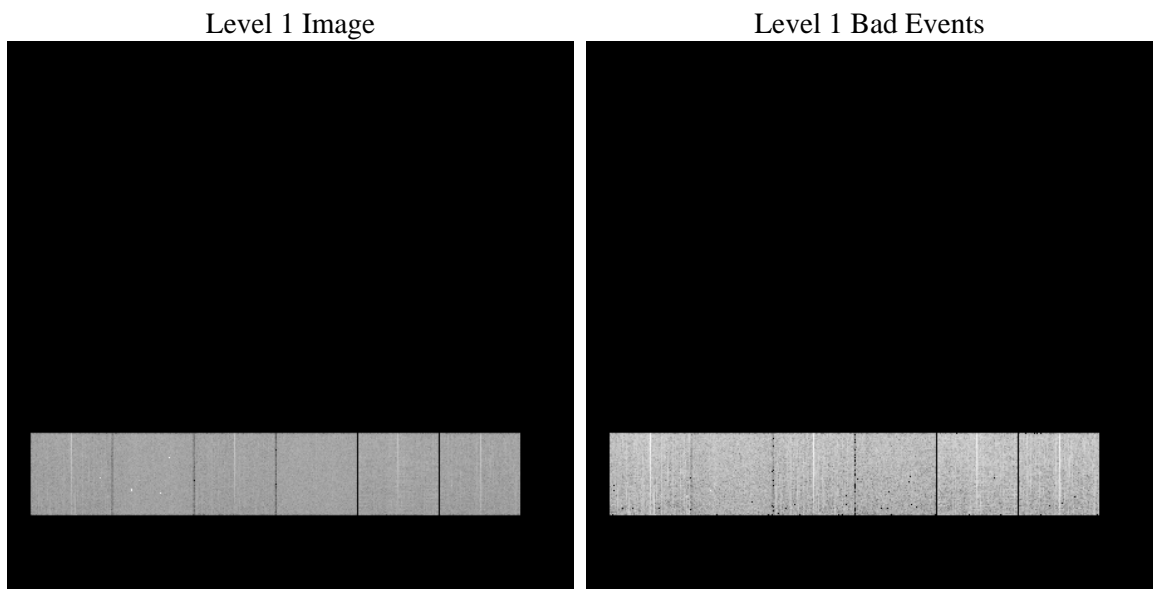
# 1 Front

seq_num	&#160	Sequence number
obs_id	57989	Observation id
title	ACIS-456789 diagnostics	Proposal title
observer	CHANDRA engineering request/realtime commanding	Principal investig
object	&#160	Source name
dtcycle	0	&#160
cycle	P	events from which exps? Prim/Second/Both
ra_targ	0.0	Observer's specified target RA [deg]
dec_targ	0.0	Observer's specified target Dec [deg]
ra_nom	106.03151314503	Nominal RA [deg]
dec_nom	-0.0061636287752276	Nominal Dec [deg]
roll_nom	303.32432338148	Nominal Roll [deg]
revision	2	Processing version of data
ontime	4290.7423685193	Sum of GTIs [s]
livetime	4236.4104050742	Livetime [s]
ontime4	4290.6192485094	Sum of GTIs [s]
ontime5	4290.701328516	Sum of GTIs [s]
ontime6	4290.6602885127	Sum of GTIs [s]
ontime7	4290.7423685193	Sum of GTIs [s]
ontime8	4290.5782085061	Sum of GTIs [s]
ontime9	4290.7834085226	Sum of GTIs [s]
l2events	392491	Number of level 2 events

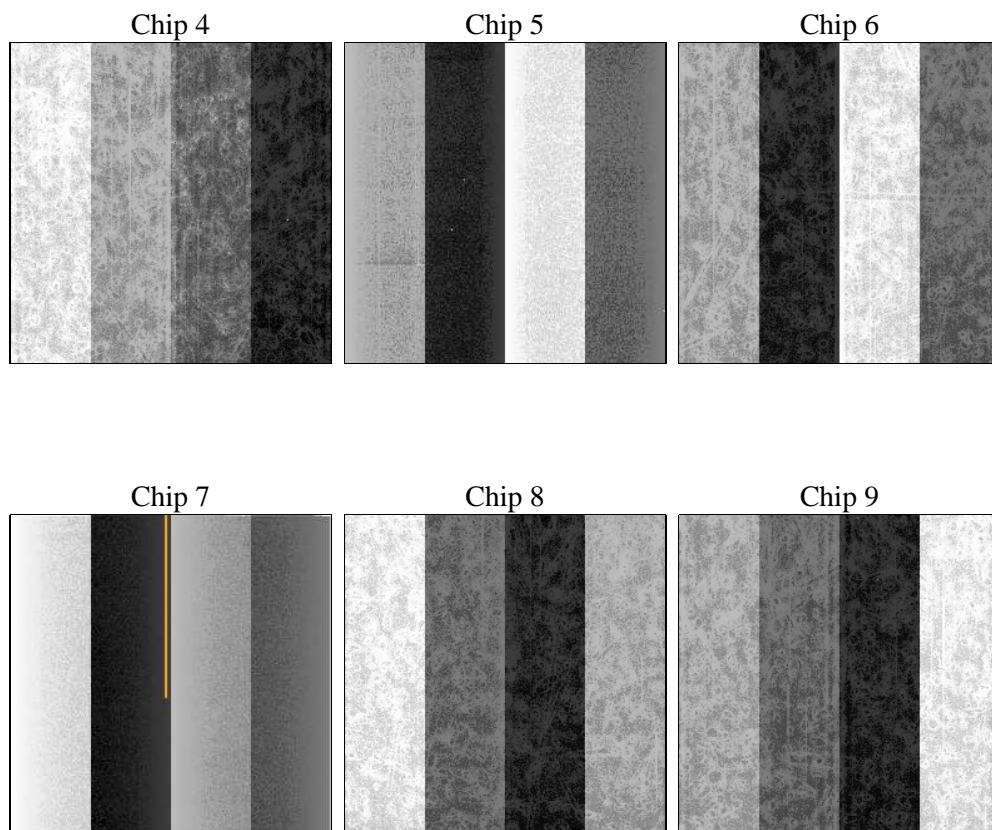
## 2 OBI

### 2.1 OBI

#### 2.1.1 Images



#### 2.1.2 Bias



### 2.1.3 Parameters

obi_num	0	Obi number	sched_exp_time	0.0	[s] Scheduled observation exposure time
ascdsver	8.4.4	Processing system revision	ontime	4290.7423685193	Sum of GTIs [s]
caldsver	4.4.9	&#160	ontime4	4290.6192485094	Sum of GTIs [s]
date	2012-05-09T02:55:39	Date and time of file creation	ontime5	4290.701328516	Sum of GTIs [s]
revision	2	Processing version of data	ontime6	4290.6602885127	Sum of GTIs [s]
			ontime7	4290.7423685193	Sum of GTIs [s]
			ontime8	4290.5782085061	Sum of GTIs [s]
			ontime9	4290.7834085226	Sum of GTIs [s]
			l1events	675591	Number of level 1 events

### 2.1.4 Events

	ccd 4	ccd 5	ccd 6	ccd 7	ccd 8	ccd 9		ccd 4	ccd 5	ccd 6	ccd 7	ccd 8	ccd 9
level 1 events	108203	115442	107739	114775	119578	109854	grade 0 events	36099	12552	33972	16644	37109	34760
rejected events	45662	37510	41449	34575	46809	45039		33%	10%	31%	14%	31%	31%
rejected %	42%	32%	38%	30%	39%	40%	grade 1 events	345	211	202	79	263	282
								0%	0%	0%	0%	0%	0%
							grade 2 events	9333	29601	12040	17823	12934	10841
								8%	25%	11%	15%	10%	9%
							grade 3 events	4231	3332	4095	7354	5051	4175
								3%	2%	3%	6%	4%	3%
							grade 4 events	4247	3301	4104	7063	4910	4198
								3%	2%	3%	6%	4%	3%
							grade 5 events	2258	4841	2227	5494	3085	2588
								2%	4%	2%	4%	2%	2%
							grade 6 events	8631	29146	12079	31316	12765	10841
								7%	25%	11%	27%	10%	9%
							grade 7 events	43059	32458	39020	29002	43461	42169
								39%	28%	36%	25%	36%	38%

## 2.2 Compared Parameters

Parameter	Planned	Actual	Parameter	Planned	Actual
Instrument	ACIS	ACIS	Obspar format version number	7	7
Detector	ACIS-456789	ACIS-456789	Obspar file type	PREDICTED	ACTUAL
Grating	NONE	NONE	Obspar update status	NONE	UPDATED
Data mode	FAINT	FAINT	On-chip summing requested	N	N
Observation mode	SECONDARY	SECONDARY	Subarray requested	NONE	NONE
[deg] Pointing RA	0	106.0315131450295	Alternating exposures requested	N	N
[deg] Pointing Dec	0	-0.006163628775227574	[s] Primary exposure time	3.2	3.2
[deg] Pointing Roll	0.0	303.3243233814784			
[mm] SIM focus pos	-0.684267	-0.6828225247311905			
[mm] SIM defocus	0	0.8505141146731063			
[mm] SIM translation stage pos	-190.132523	250.466033080201			
[mm] SIM translation stage offset	0	-0.01005468664627074			
[s] Observation start time (MET)	318245997.796865	318245996.77187			
Observation start date	2008-02-01T09:39:58	2008-02-01T09:39:56			
[s] Observation end time (MET)	318258888.197491	318258887.17249			
Observation end date	2008-02-01T13:14:48	2008-02-01T13:14:47			
Read mode	TIMED	TIMED			

## 2.3 Star Slots

## 2.4 FID Slots

## A Summary

### A.1 Status

V&V Scientist	Beth Sundheim
V&V Date (YYYY-MM-DD)	2012.05.10
V&V Edition	1
V&V Disposition and Status	OK
V&V Charge Time	4.2907423685193

### A.2 Comments