

V&V Reference Report

L2 ASCDS Version : 8.4.4

Observation 57911 - L2 Version 2
Chandra X-Ray Center

L2 Processing Date : May 11 2012

Contents

1	Front	2
2	OBI	3
2.1	OBI	3
2.1.1	Images	3
2.1.2	Bias	3
2.1.3	Parameters	4
2.1.4	Events	4
2.2	Compared Parameters	5
2.3	Star Slots	6
2.4	FID Slots	6
A	Summary	7
A.1	Status	7
A.2	Comments	7

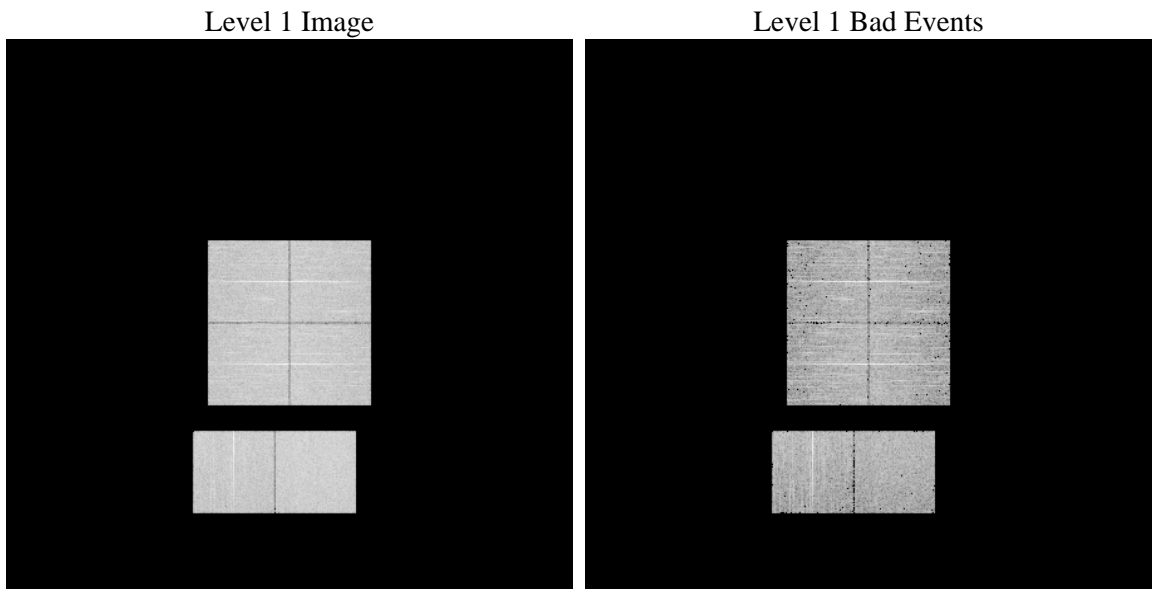
1 Front

seq_num	 	Sequence number
obs_id	57911	Observation id
title	ACIS-012367 diagnostics	Proposal title
observer	CHANDRA engineering request/realtime commanding	Principal investig
object	 	Source name
dtcycle	0	
cycle	P	events from which exps? Prim/Second/Both
ra_targ	0.0	Observer's specified target RA [deg]
dec_targ	0.0	Observer's specified target Dec [deg]
ra_nom	172.02950164038	Nominal RA [deg]
dec_nom	-24.989621045689	Nominal Dec [deg]
roll_nom	348.24389406104	Nominal Roll [deg]
revision	2	Processing version of data
ontime	4716.3639157414	Sum of GTIs [s]
livetime	4656.6424759869	Livetime [s]
ontime0	4716.3228757381	Sum of GTIs [s]
ontime1	4716.2818357348	Sum of GTIs [s]
ontime2	4716.2407957315	Sum of GTIs [s]
ontime3	4716.4049557447	Sum of GTIs [s]
ontime6	4716.1997557282	Sum of GTIs [s]
ontime7	4716.3639157414	Sum of GTIs [s]
l2events	352380	Number of level 2 events

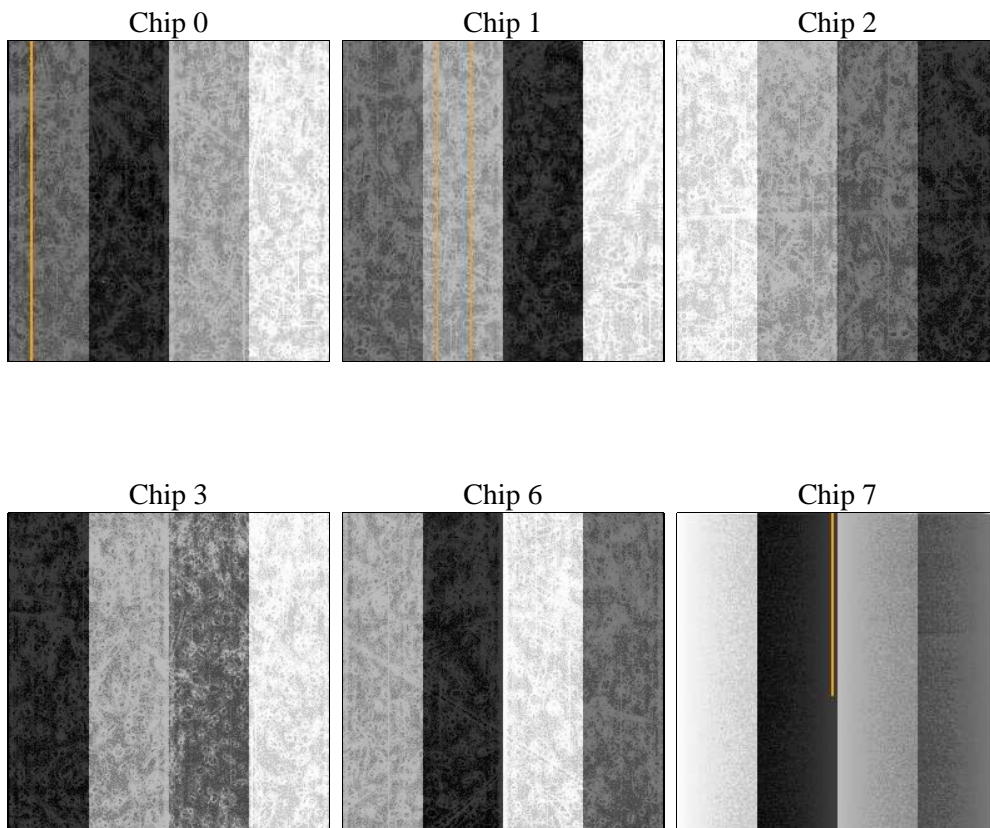
2 OBI

2.1 OBI

2.1.1 Images



2.1.2 Bias



2.1.3 Parameters

obi_num	0	Obi number	sched_exp_time	0.0	[s] Scheduled observation exposure time
ascdsver	8.4.4	Processing system revision	ontime	4716.3639157414	Sum of GTIs [s]
caldsver	4.4.9	 	ontime0	4716.3228757381	Sum of GTIs [s]
date	2012-05-11T15:22:38	Date and time of file creation	ontime1	4716.2818357348	Sum of GTIs [s]
revision	2	Processing version of data	ontime2	4716.2407957315	Sum of GTIs [s]
			ontime3	4716.4049557447	Sum of GTIs [s]
			ontime6	4716.1997557282	Sum of GTIs [s]
			ontime7	4716.3639157414	Sum of GTIs [s]
			l1events	608742	Number of level 1 events

2.1.4 Events

	ccd 0	ccd 1	ccd 2	ccd 3	ccd 6	ccd 7		ccd 0	ccd 1	ccd 2	ccd 3	ccd 6	ccd 7
level 1 events	95982	95838	100610	100277	101300	114735	grade 0 events	31220	30709	31933	32594	32139	15881
rejected events	38177	38028	42316	41155	40670	36545		32%	32%	31%	32%	31%	13%
rejected %	39%	39%	42%	41%	40%	31%	grade 1 events	222	168	239	249	227	82
								0%	0%	0%	0%	0%	0%
							grade 2 events	10204	10585	10108	10168	10629	17078
								10%	11%	10%	10%	10%	14%
							grade 3 events	3816	3722	4016	3961	3918	7527
								3%	3%	3%	3%	3%	6%
							grade 4 events	3820	3773	3938	3968	3924	7340
								3%	3%	3%	3%	3%	6%
							grade 5 events	2155	2271	2114	2407	2509	6121
								2%	2%	2%	2%	2%	5%
							grade 6 events	8781	9066	8353	8482	10070	30413
								9%	9%	8%	8%	9%	26%
							grade 7 events	35764	35544	39909	38448	37884	30293
								37%	37%	39%	38%	37%	26%

2.2 Compared Parameters

Parameter	Planned	Actual	Parameter	Planned	Actual
Instrument	ACIS	ACIS	Obspar format version number	7	7
Detector	ACIS-012367	ACIS-012367	Obspar file type	PREDICTED	ACTUAL
Grating	NONE	NONE	Obspar update status	NONE	UPDATED
Data mode	FAINT	FAINT	On-chip summing requested	N	N
Observation mode	SECONDARY	SECONDARY	Subarray requested	NONE	NONE
[deg] Pointing RA	0	172.0295016403798	Alternating exposures requested	N	N
[deg] Pointing Dec	0	-24.98962104568879	[s] Primary exposure time	3.2	3.2
[deg] Pointing Roll	0.0	348.2438940610405			
[mm] SIM focus pos	-0.782348	-0.6828225247311905			
[mm] SIM defocus	0	0.8505141146731063			
[mm] SIM translation stage pos	-233.592463	250.466033080201			
[mm] SIM translation stage offset	0	-0.01005468664627074			
[s] Observation start time (MET)	322129802.935465	322129801.91048			
Observation start date	2008-03-17T08:30:03	2008-03-17T08:30:01			
[s] Observation end time (MET)	322137066.085817	322137065.06083			
Observation end date	2008-03-17T10:31:06	2008-03-17T10:31:05			
Read mode	TIMED	TIMED			

2.3 Star Slots

2.4 FID Slots

A Summary

A.1 Status

V&V Scientist	Beth Sundheim
V&V Date (YYYY-MM-DD)	2012.05.14
V&V Edition	1
V&V Disposition and Status	OK
V&V Charge Time	4.7163639157414

A.2 Comments