

# V&V Reference Report

## L2 ASCDS Version : 8.4.4

Observation 57867 - L2 Version 3  
Chandra X-Ray Center

L2 Processing Date : May 12 2012

## Contents

<b>1</b>	<b>Front</b>	<b>2</b>
<b>2</b>	<b>OBI</b>	<b>3</b>
2.1	OBI . . . . .	3
2.1.1	Images . . . . .	3
2.1.2	Bias . . . . .	3
2.1.3	Parameters . . . . .	4
2.1.4	Events . . . . .	4
2.2	Compared Parameters . . . . .	5
2.3	Star Slots . . . . .	6
2.4	FID Slots . . . . .	6
<b>A</b>	<b>Summary</b>	<b>7</b>
A.1	Status . . . . .	7
A.2	Comments . . . . .	7

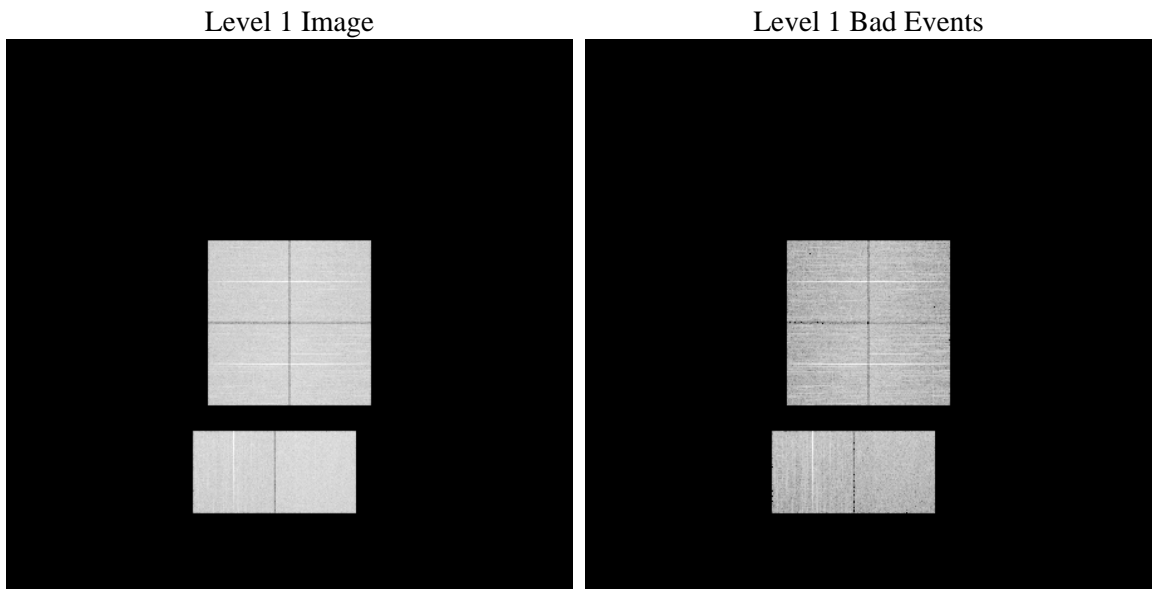
# 1 Front

seq_num	&#160	Sequence number
obs_id	57867	Observation id
title	ACIS-012367 diagnostics	Proposal title
observer	CHANDRA engineering request/realtime commanding	Principal investig
object	&#160	Source name
dtcycle	0	&#160
cycle	P	events from which exps? Prim/Second/Both
ra_targ	0.0	Observer's specified target RA [deg]
dec_targ	0.0	Observer's specified target Dec [deg]
ra_nom	228.61454279186	Nominal RA [deg]
dec_nom	11.179828621639	Nominal Dec [deg]
roll_nom	123.00096938082	Nominal Roll [deg]
revision	3	Processing version of data
ontime	8143.0599758625	Sum of GTIs [s]
livetime	8039.9476472861	Livetime [s]
ontime0	8139.7779455781	Sum of GTIs [s]
ontime1	8142.9778958559	Sum of GTIs [s]
ontime2	8142.9368558526	Sum of GTIs [s]
ontime3	8143.1010158658	Sum of GTIs [s]
ontime6	8142.8958158493	Sum of GTIs [s]
ontime7	8143.0599758625	Sum of GTIs [s]
l2events	596922	Number of level 2 events

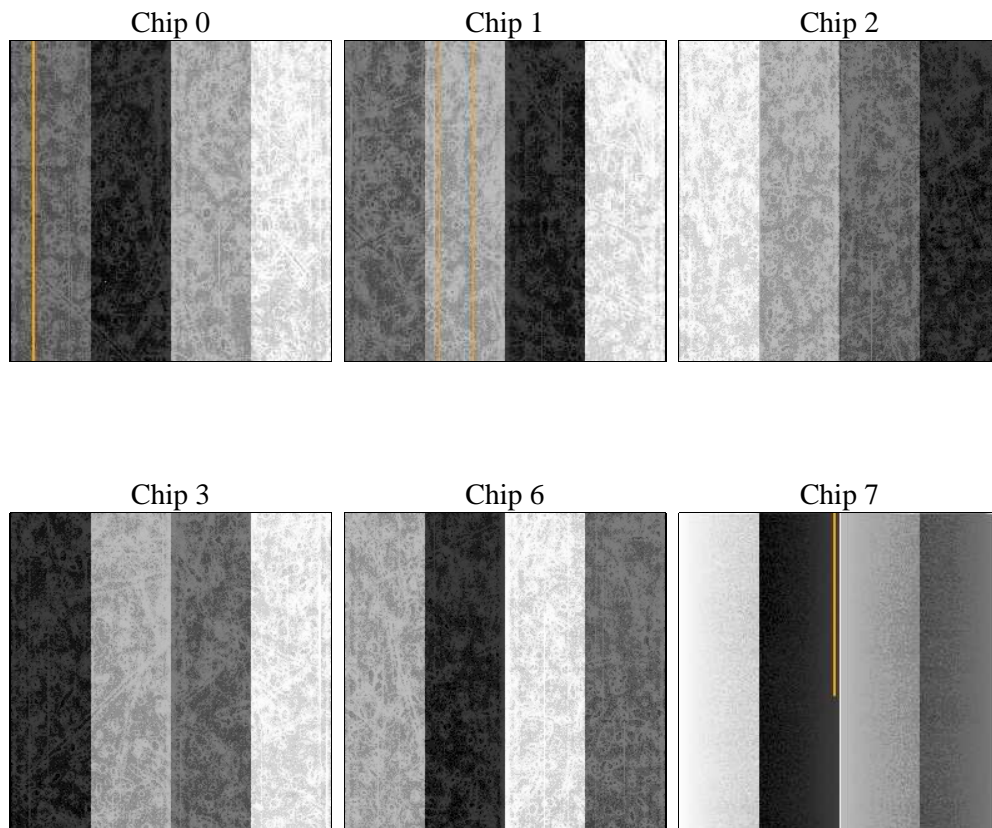
## 2 OBI

### 2.1 OBI

#### 2.1.1 Images



#### 2.1.2 Bias



### 2.1.3 Parameters

obi_num	0	Obi number	sched_exp_time	900	[s] Scheduled observation exposure time
ascdsver	8.4.4	Processing system revision	ontime	8143.0599758625	Sum of GTIs [s]
caldsver	4.4.9	&#160	ontime0	8139.7779455781	Sum of GTIs [s]
date	2012-05-13T00:10:57	Date and time of file creation	ontime1	8142.9778958559	Sum of GTIs [s]
revision	3	Processing version of data	ontime2	8142.9368558526	Sum of GTIs [s]
			ontime3	8143.1010158658	Sum of GTIs [s]
			ontime6	8142.8958158493	Sum of GTIs [s]
			ontime7	8143.0599758625	Sum of GTIs [s]
			l1events	1051942	Number of level 1 events

### 2.1.4 Events

	ccd 0	ccd 1	ccd 2	ccd 3	ccd 6	ccd 7		ccd 0	ccd 1	ccd 2	ccd 3	ccd 6	ccd 7
level 1 events	163378	167303	171354	176059	175477	198371	grade 0 events	54015	53270	54633	55409	54962	27335
rejected events	65005	68253	72846	76729	72999	66025		33%	31%	31%	31%	31%	13%
rejected %	39%	40%	42%	43%	41%	33%	grade 1 events	349	360	402	400	335	157
								0%	0%	0%	0%	0%	0%
							grade 2 events	17862	18471	17133	17190	18502	28714
								10%	11%	9%	9%	10%	14%
							grade 3 events	6534	6639	6768	6808	6619	12597
								3%	3%	3%	3%	3%	6%
							grade 4 events	6591	6784	6735	6925	6584	12717
								4%	4%	3%	3%	3%	6%
							grade 5 events	3894	3887	3584	4316	4186	10732
								2%	2%	2%	2%	2%	5%
							grade 6 events	14552	15154	14442	14245	17110	52601
								8%	9%	8%	8%	9%	26%
							grade 7 events	59581	62738	67657	70766	67179	53518
								36%	37%	39%	40%	38%	26%

## 2.2 Compared Parameters

Parameter	Planned	Actual
Instrument	ACIS	ACIS
Detector	ACIS-012367	ACIS-012367
Grating	NONE	NONE
Data mode	FAINT	FAINT
Observation mode	SECONDARY	SECONDARY
[deg] Pointing RA	228.6145427622313	228.6145427918559
[deg] Pointing Dec	11.17982859011605	11.17982862163893
[deg] Pointing Roll	123.0009695344018	123.0009693808236
[mm] SIM focus pos	-0.68282252473119	-0.68282252473119
[mm] SIM defocus	0.8505140384245534	0.8505140384245534
[mm] SIM translation stage pos	250.4660330802	250.4660330802
[mm] SIM translation stage offset	-0.01005726120527584	-0.01005726120527584
[s] Observation start time (MET)	324233677.03786	324233677.03786
Observation start date	2008-04-10T17:02:00	2008-04-10T16:54:37
[s] Observation end time (MET)	324242503.896881	324242503.896881
Observation end date	2008-04-10T17:17:00	2008-04-10T19:21:43
Read mode	TIMED	TIMED

Parameter	Planned	Actual
Obspar format version number	7	7
Obspar file type	PREDICTED	ACTUAL
Obspar update status	OVERRIDE	OVERRIDE
Number of optional ACIS chips dropped	0	0
On-chip summing requested	N	N
Subarray requested	NONE	NONE
Alternating exposures requested	N	N
[s] Primary exposure time	3.2	3.2

## 2.3 Star Slots

## 2.4 FID Slots

## A Summary

### A.1 Status

V&V Scientist	Beth Sundheim
V&V Date (YYYY-MM-DD)	2012.05.15
V&V Edition	1
V&V Disposition and Status	OK
V&V Charge Time	8.1430599758625

### A.2 Comments