

V&V Reference Report

L2 ASCDS Version : 8.4.4

Observation 57806 - L2 Version 3
Chandra X-Ray Center

L2 Processing Date : May 15 2012

Contents

1	Front	2
2	OBI	3
2.1	OBI	3
2.1.1	Images	3
2.1.2	Bias	3
2.1.3	Parameters	4
2.1.4	Events	4
2.2	Compared Parameters	5
2.3	Star Slots	6
2.4	FID Slots	6
A	Summary	7
A.1	Status	7
A.2	Comments	7

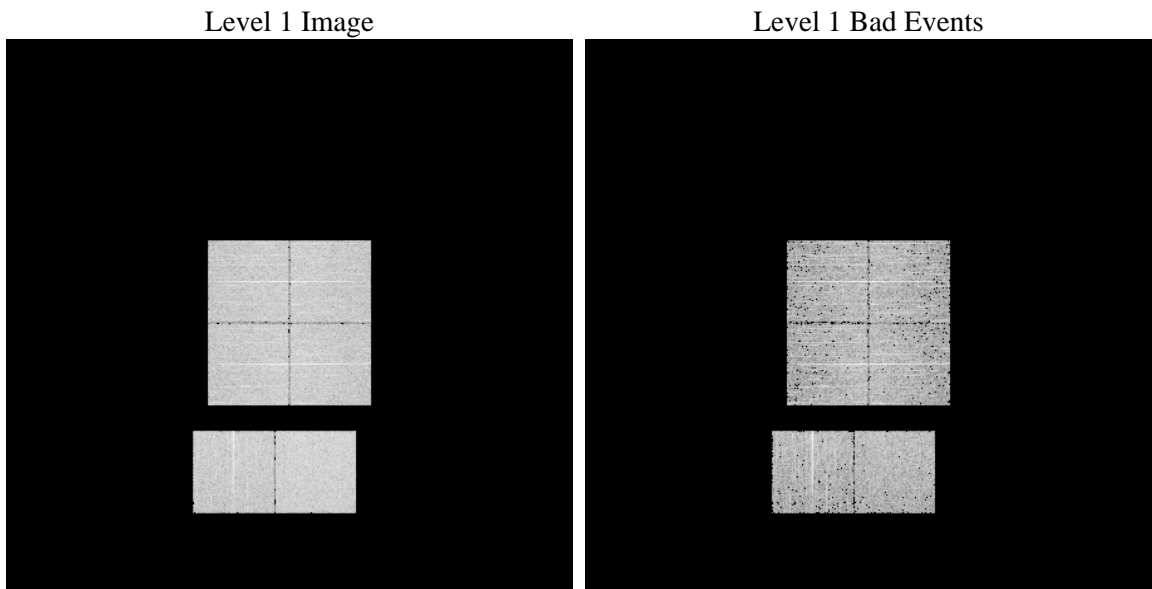
1 Front

seq_num	 	Sequence number
obs_id	57806	Observation id
title	ACIS-012367 diagnostics	Proposal title
observer	CHANDRA engineering request/realtime commanding	Principal investig
object	 	Source name
dtcycle	0	
cycle	P	events from which exps? Prim/Second/Both
ra_targ	0.0	Observer's specified target RA [deg]
dec_targ	0.0	Observer's specified target Dec [deg]
ra_nom	215.02535693447	Nominal RA [deg]
dec_nom	-30.018017100407	Nominal Dec [deg]
roll_nom	287.68916006187	Nominal Roll [deg]
revision	3	Processing version of data
ontime	2553.5713835955	Sum of GTIs [s]
livetime	2521.2365251603	Livetime [s]
ontime0	2553.5303435922	Sum of GTIs [s]
ontime1	2553.4893035889	Sum of GTIs [s]
ontime2	2553.4482635856	Sum of GTIs [s]
ontime3	2553.5999905467	Sum of GTIs [s]
ontime6	2553.4072235823	Sum of GTIs [s]
ontime7	2553.5713835955	Sum of GTIs [s]
l2events	183068	Number of level 2 events

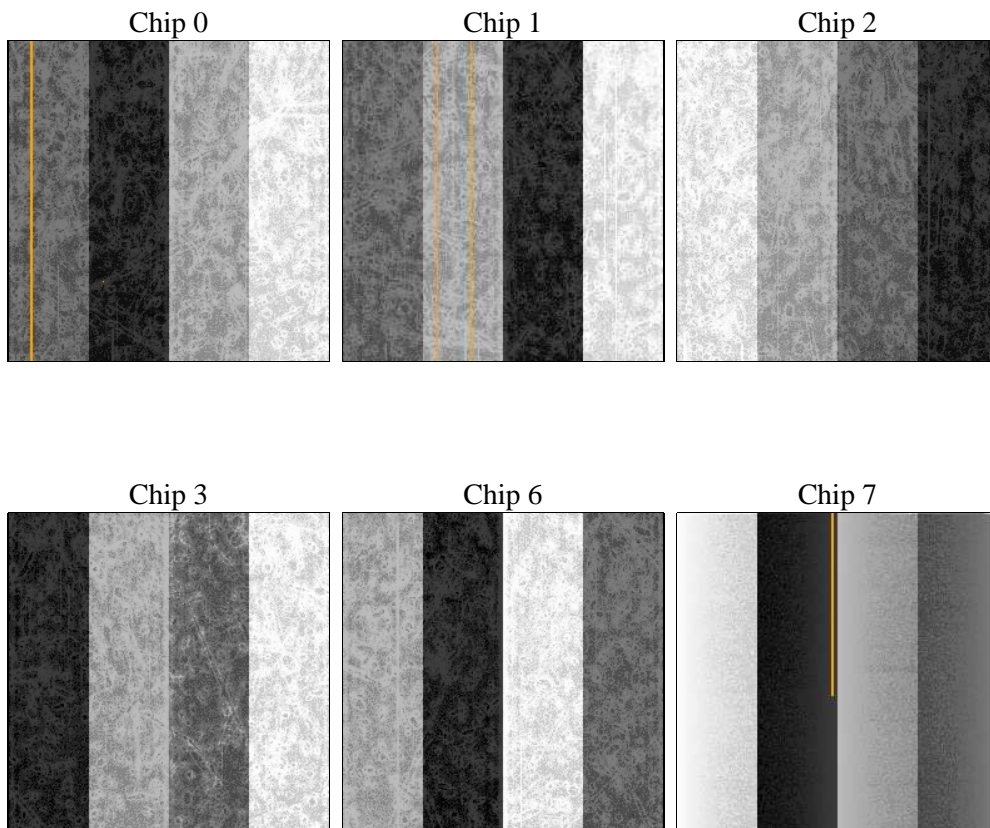
2 OBI

2.1 OBI

2.1.1 Images



2.1.2 Bias



2.1.3 Parameters

obi_num	1	Obi number	sched_exp_time	1380	[s] Scheduled observation exposure time
ascdsver	8.4.4	Processing system revision	ontime	2553.5713835955	Sum of GTIs [s]
caldbver	4.4.9	 	ontime0	2553.5303435922	Sum of GTIs [s]
date	2012-05-15T16:13:19	Date and time of file creation	ontime1	2553.4893035889	Sum of GTIs [s]
revision	3	Processing version of data	ontime2	2553.4482635856	Sum of GTIs [s]
			ontime3	2553.5999905467	Sum of GTIs [s]
			ontime6	2553.4072235823	Sum of GTIs [s]
			ontime7	2553.5713835955	Sum of GTIs [s]
			l1events	346399	Number of level 1 events

2.1.4 Events

	ccd 0	ccd 1	ccd 2	ccd 3	ccd 6	ccd 7		ccd 0	ccd 1	ccd 2	ccd 3	ccd 6	ccd 7
level 1 events	55338	55762	56421	55815	57170	65893	grade 0 events	17809	17605	18055	18378	18389	9121
rejected events	25145	25581	26554	25447	25612	24999		32%	31%	32%	32%	32%	13%
rejected %	45%	45%	47%	45%	44%	37%	grade 1 events	127	113	135	130	108	53
								0%	0%	0%	0%	0%	0%
							grade 2 events	5883	6166	5615	5813	6133	9834
								10%	11%	9%	10%	10%	14%
							grade 3 events	2173	2223	2266	2173	2318	4250
								3%	3%	4%	3%	4%	6%
							grade 4 events	2159	2120	2222	2139	2168	4175
								3%	3%	3%	3%	3%	6%
							grade 5 events	1229	1361	1124	1407	1364	3601
								2%	2%	1%	2%	2%	5%
							grade 6 events	4957	4999	4659	4758	5640	17434
								8%	8%	8%	8%	9%	26%
							grade 7 events	21001	21175	22345	21017	21050	17425
								37%	37%	39%	37%	36%	26%

2.2 Compared Parameters

Parameter	Planned	Actual	Parameter	Planned	Actual
Instrument	ACIS	ACIS	Obspar format version number	7	7
Detector	ACIS-012367	ACIS-012367	Obspar file type	PREDICTED	ACTUAL
Grating	NONE	NONE	Obspar update status	OVERRIDE	OVERRIDE
Data mode	FAINT	FAINT	Number of optional ACIS chips dropped	0	0
Observation mode	SECONDARY	SECONDARY	On-chip summing requested	N	N
[deg] Pointing RA	215.0253563642364	215.025356934472	Subarray requested	NONE	NONE
[deg] Pointing Dec	-30.01801823797864	-30.01801710040723	Alternating exposures requested	N	N
[deg] Pointing Roll	287.6891594691826	287.6891600618739	[s] Primary exposure time	3.2	3.2
[mm] SIM focus pos	-0.78090834371673	-0.78090834371673			
[mm] SIM defocus	0.7524282194390134	0.7524282194390134			
[mm] SIM translation stage pos	250.4635187649	250.4635187649			
[mm] SIM translation stage offset	-0.007542945905271381	-0.007542945905271381			
[s] Observation start time (MET)	327842626.363704	327842626.363704			
Observation start date	2008-05-22T11:49:00	2008-05-22T11:23:46			
[s] Observation end time (MET)	327847146.603814	327847146.603814			
Observation end date	2008-05-22T12:12:00	2008-05-22T12:39:06			
Read mode	TIMED	TIMED			

2.3 Star Slots

2.4 FID Slots

A Summary

A.1 Status

V&V Scientist	Jen Lauer
V&V Date (YYYY-MM-DD)	2012.05.21
V&V Edition	1
V&V Disposition and Status	OK
V&V Charge Time	2.5535713835955

A.2 Comments