

V&V Reference Report

L2 ASCDS Version : 8.4.4

Observation 57776 - L2 Version 2
Chandra X-Ray Center

L2 Processing Date : May 16 2012

Contents

1	Front	2
2	OBI	3
2.1	OBI	3
2.1.1	Images	3
2.1.2	Bias	3
2.1.3	Parameters	4
2.1.4	Events	4
2.2	Compared Parameters	5
2.3	Star Slots	6
2.4	FID Slots	6
A	Summary	7
A.1	Status	7
A.2	Comments	7

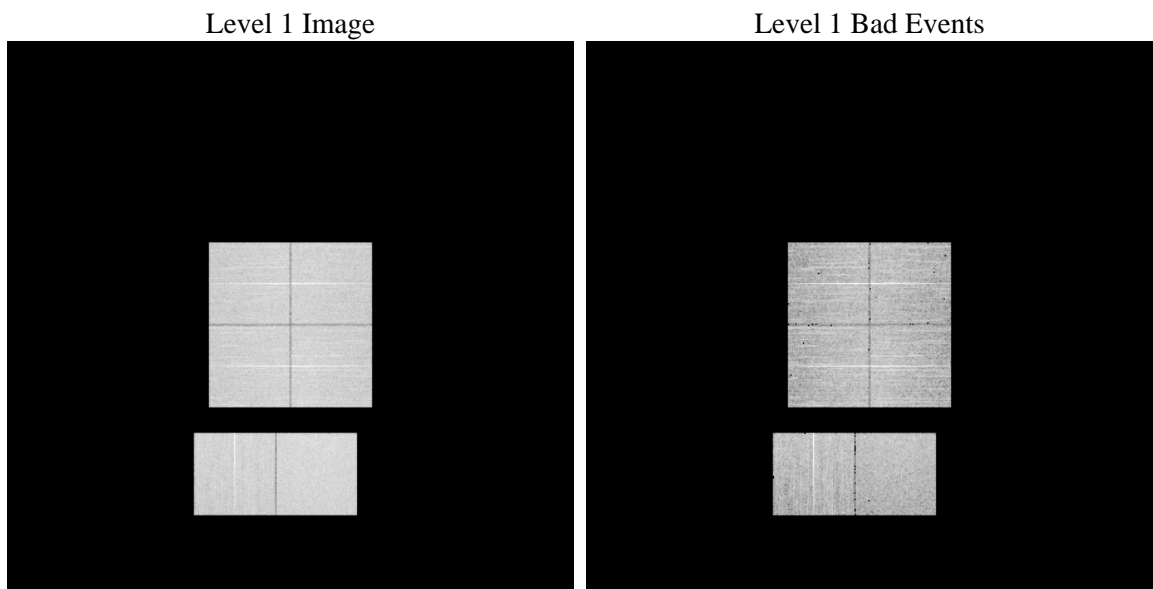
1 Front

seq_num	 	Sequence number
obs_id	57776	Observation id
title	ACIS-012367 diagnostics	Proposal title
observer	CHANDRA engineering request/realtime commanding	Principal investig
object	 	Source name
dtcycle	0	
cycle	P	events from which exps? Prim/Second/Both
ra_targ	0.0	Observer's specified target RA [deg]
dec_targ	0.0	Observer's specified target Dec [deg]
ra_nom	156.04294102433	Nominal RA [deg]
dec_nom	64.974048092475	Nominal Dec [deg]
roll_nom	268.55908213218	Nominal Roll [deg]
revision	2	Processing version of data
ontime	6623.9999753833	Sum of GTIs [s]
livetime	6540.122899201	Livetime [s]
ontime0	6623.9999753833	Sum of GTIs [s]
ontime1	6623.9999753833	Sum of GTIs [s]
ontime2	6623.9999753833	Sum of GTIs [s]
ontime3	6623.9999753833	Sum of GTIs [s]
ontime6	6623.9999753833	Sum of GTIs [s]
ontime7	6623.9999753833	Sum of GTIs [s]
l2events	473117	Number of level 2 events

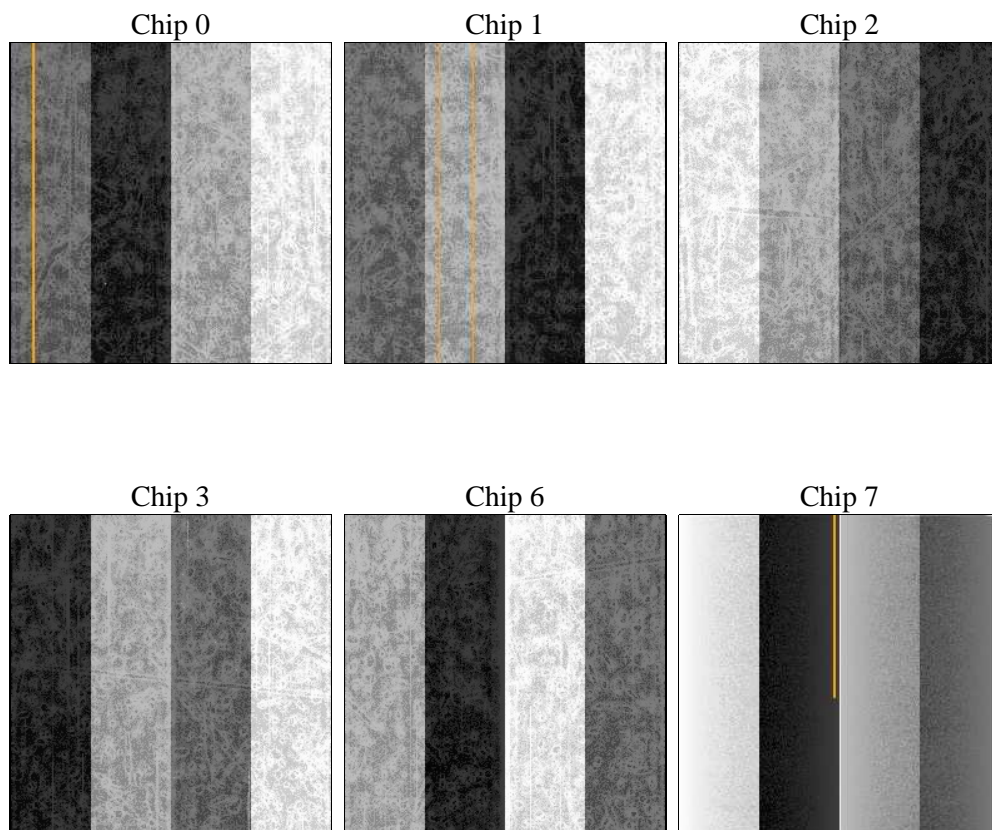
2 OBI

2.1 OBI

2.1.1 Images



2.1.2 Bias



2.1.3 Parameters

obi_num	0	Obi number	sched_exp_time	0.0	[s] Scheduled observation exposure time
ascdsver	8.4.4	Processing system revision	ontime	6623.9999753833	Sum of GTIs [s]
caldsver	4.4.9	 	ontime0	6623.9999753833	Sum of GTIs [s]
date	2012-05-16T05:06:39	Date and time of file creation	ontime1	6623.9999753833	Sum of GTIs [s]
revision	2	Processing version of data	ontime2	6623.9999753833	Sum of GTIs [s]
			ontime3	6623.9999753833	Sum of GTIs [s]
			ontime6	6623.9999753833	Sum of GTIs [s]
			ontime7	6623.9999753833	Sum of GTIs [s]
			l1events	830452	Number of level 1 events

2.1.4 Events

	ccd 0	ccd 1	ccd 2	ccd 3	ccd 6	ccd 7		ccd 0	ccd 1	ccd 2	ccd 3	ccd 6	ccd 7
level 1 events	131653	130877	134869	137794	137972	157287	grade 0 events	42050	41712	42956	42930	43003	21108
rejected events	53644	52780	56858	59502	56981	51744		31%	31%	31%	31%	31%	13%
rejected %	40%	40%	42%	43%	41%	32%	grade 1 events	301	230	315	324	287	106
								0%	0%	0%	0%	0%	0%
							grade 2 events	13950	14464	13364	13793	14524	22942
								10%	11%	9%	10%	10%	14%
							grade 3 events	5197	5013	5273	5315	5190	10006
								3%	3%	3%	3%	3%	6%
							grade 4 events	5244	5232	5243	5226	5136	9989
								3%	3%	3%	3%	3%	6%
							grade 5 events	3101	3205	2919	3493	3506	8466
								2%	2%	2%	2%	2%	5%
							grade 6 events	11602	11730	11224	11068	13185	41553
								8%	8%	8%	8%	9%	26%
							grade 7 events	50208	49291	53575	55645	53141	43117
								38%	37%	39%	40%	38%	27%

2.2 Compared Parameters

Parameter	Planned	Actual
Instrument	ACIS	ACIS
Detector	ACIS-012367	ACIS-012367
Grating	NONE	NONE
Data mode	FAINT	FAINT
Observation mode	SECONDARY	SECONDARY
[deg] Pointing RA	0	156.0429410243321
[deg] Pointing Dec	0	64.97404809247477
[deg] Pointing Roll	0.0	268.5590821321837
[mm] SIM focus pos	-1.429586	-0.7809083437167272
[mm] SIM defocus	0.1037507710433287	0.7524282956875696
[mm] SIM translation stage pos	250.455976	250.466033080201
[mm] SIM translation stage offset	0	-0.01005468664627074
[s] Observation start time (MET)	329210099.430484	329210098.40549
Observation start date	2008-06-07T07:14:59	2008-06-07T07:14:58
[s] Observation end time (MET)	329219435.13094	329219434.10594
Observation end date	2008-06-07T09:50:35	2008-06-07T09:50:34
Read mode	TIMED	TIMED

Parameter	Planned	Actual
Obspar format version number	7	7
Obspar file type	PREDICTED	ACTUAL
Obspar update status	NONE	UPDATED
On-chip summing requested	N	N
Subarray requested	NONE	NONE
Alternating exposures requested	N	N
[s] Primary exposure time	3.2	3.2

2.3 Star Slots

2.4 FID Slots

A Summary

A.1 Status

V&V Scientist	Beth Sundheim
V&V Date (YYYY-MM-DD)	2012.05.22
V&V Edition	1
V&V Disposition and Status	OK
V&V Charge Time	6.6239999753833

A.2 Comments