

# V&V Reference Report

## L2 ASCDS Version : 8.4.4

Observation 57668 - L2 Version 2  
Chandra X-Ray Center

L2 Processing Date : May 18 2012

## Contents

<b>1</b>	<b>Front</b>	<b>2</b>
<b>2</b>	<b>OBI</b>	<b>3</b>
2.1	OBI . . . . .	3
2.1.1	Images . . . . .	3
2.1.2	Bias . . . . .	3
2.1.3	Parameters . . . . .	4
2.1.4	Events . . . . .	4
2.2	Compared Parameters . . . . .	5
2.3	Star Slots . . . . .	6
2.4	FID Slots . . . . .	6
<b>A</b>	<b>Summary</b>	<b>7</b>
A.1	Status . . . . .	7
A.2	Comments . . . . .	7

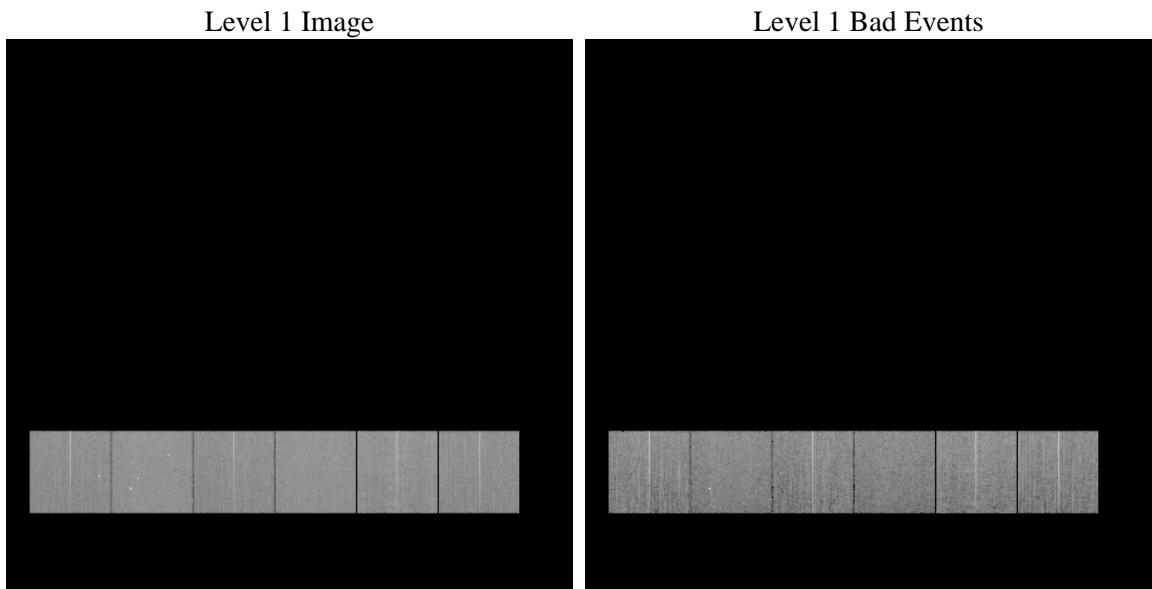
# 1 Front

seq_num	&#160	Sequence number
obs_id	57668	Observation id
title	ACIS-456789 diagnostics	Proposal title
observer	CHANDRA engineering request/realtime commanding	Principal investig
object	&#160	Source name
dtcycle	0	&#160
cycle	P	events from which exps? Prim/Second/Both
ra_targ	0.0	Observer's specified target RA [deg]
dec_targ	0.0	Observer's specified target Dec [deg]
ra_nom	330.01595059899	Nominal RA [deg]
dec_nom	-47.973334575349	Nominal Dec [deg]
roll_nom	35.402882017224	Nominal Roll [deg]
revision	2	Processing version of data
ontime	8175.9999696016	Sum of GTIs [s]
livetime	8072.4705349904	Livetime [s]
ontime4	8175.9999696016	Sum of GTIs [s]
ontime5	8175.9999696016	Sum of GTIs [s]
ontime6	8175.9999696016	Sum of GTIs [s]
ontime7	8175.9999696016	Sum of GTIs [s]
ontime8	8175.9999696016	Sum of GTIs [s]
ontime9	8175.9999696016	Sum of GTIs [s]
l2events	594209	Number of level 2 events

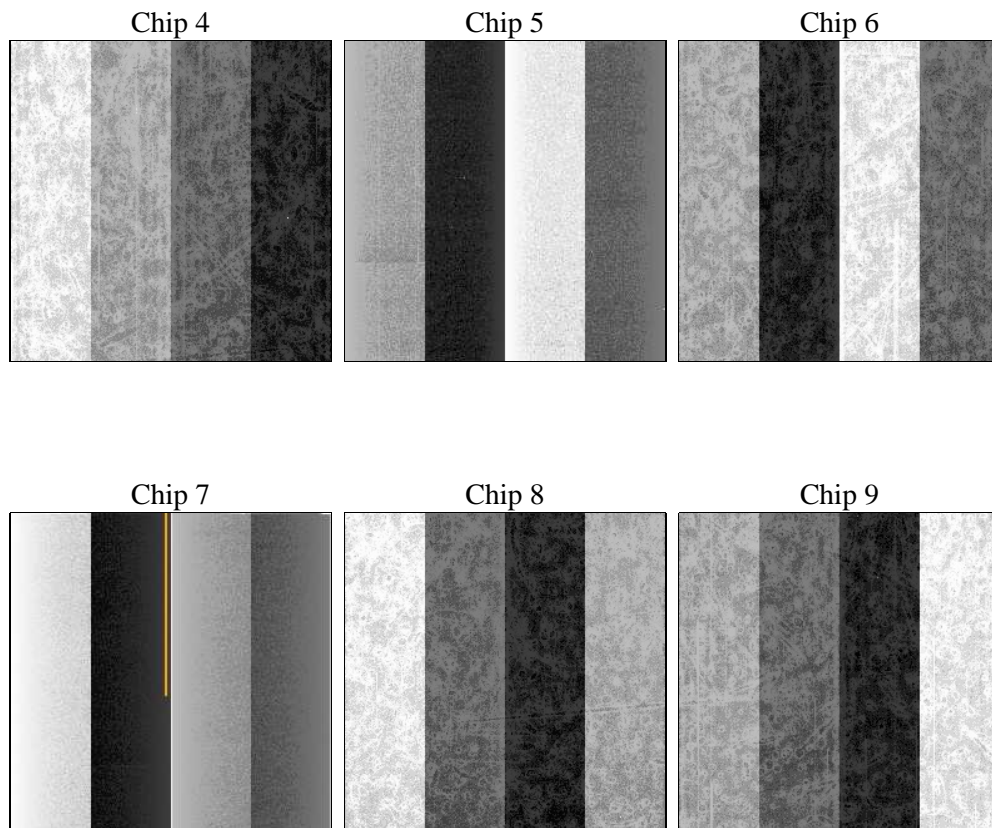
## 2 OBI

### 2.1 OBI

#### 2.1.1 Images



#### 2.1.2 Bias



### 2.1.3 Parameters

obi_num	0	Obi number	sched_exp_time	0.0	[s] Scheduled observation exposure time
ascdsver	8.4.4	Processing system revision	ontime	8175.9999696016	Sum of GTIs [s]
caldsver	4.4.9	&#160	ontime4	8175.9999696016	Sum of GTIs [s]
date	2012-05-18T16:55:35	Date and time of file creation	ontime5	8175.9999696016	Sum of GTIs [s]
revision	2	Processing version of data	ontime6	8175.9999696016	Sum of GTIs [s]
			ontime7	8175.9999696016	Sum of GTIs [s]
			ontime8	8175.9999696016	Sum of GTIs [s]
			ontime9	8175.9999696016	Sum of GTIs [s]
			l1events	1110784	Number of level 1 events

### 2.1.4 Events

	ccd 4	ccd 5	ccd 6	ccd 7	ccd 8	ccd 9		ccd 4	ccd 5	ccd 6	ccd 7	ccd 8	ccd 9
level 1 events	172417	201931	173617	195971	194489	172359	grade 0 events	54072	20583	51400	25495	55857	51044
rejected events	80315	74873	77465	68669	84954	78934		31%	10%	29%	13%	28%	29%
rejected %	46%	37%	44%	35%	43%	45%	grade 1 events	556	287	356	171	352	388
								0%	0%	0%	0%	0%	0%
							grade 2 events	14714	45735	17375	28025	20531	16527
								8%	22%	10%	14%	10%	9%
							grade 3 events	6349	6856	6241	12272	7671	6297
								3%	3%	3%	6%	3%	3%
							grade 4 events	6276	6030	6259	11954	7788	6088
								3%	2%	3%	6%	4%	3%
							grade 5 events	4128	10639	4272	10697	5495	4712
								2%	5%	2%	5%	2%	2%
							grade 6 events	11820	49401	16064	51085	18969	14639
								6%	24%	9%	26%	9%	8%
							grade 7 events	74502	62400	71650	56272	77826	72664
								43%	30%	41%	28%	40%	42%

## 2.2 Compared Parameters

Parameter	Planned	Actual	Parameter	Planned	Actual
Instrument	ACIS	ACIS	Obspar format version number	7	7
Detector	ACIS-456789	ACIS-456789	Obspar file type	PREDICTED	ACTUAL
Grating	NONE	NONE	Obspar update status	NONE	UPDATED
Data mode	FAINT	FAINT	On-chip summing requested	N	N
Observation mode	SECONDARY	SECONDARY	Subarray requested	NONE	NONE
[deg] Pointing RA	0	330.0159505989884	Alternating exposures requested	N	N
[deg] Pointing Dec	0	-47.97333457534886	[s] Primary exposure time	3.2	3.2
[deg] Pointing Roll	0.0	35.40288201722426			
[mm] SIM focus pos	-1.429586	-0.7809083437167272			
[mm] SIM defocus	0.1037507710433287	0.7524282956875696			
[mm] SIM translation stage pos	250.455976	250.466033080201			
[mm] SIM translation stage offset	0	-0.01005468664627074			
[s] Observation start time (MET)	333823296.656213	333823295.63121			
Observation start date	2008-07-30T16:41:37	2008-07-30T16:41:35			
[s] Observation end time (MET)	333836082.506839	333836081.48184			
Observation end date	2008-07-30T20:14:43	2008-07-30T20:14:41			
Read mode	TIMED	TIMED			

## 2.3 Star Slots

## 2.4 FID Slots

## A Summary

### A.1 Status

V&V Scientist	Beth Sundheim
V&V Date (YYYY-MM-DD)	2012.05.25
V&V Edition	1
V&V Disposition and Status	OK
V&V Charge Time	8.1759999696016

### A.2 Comments