

V&V Reference Report

L2 ASCDS Version : 8.4.4

Observation 57645 - L2 Version 2
Chandra X-Ray Center

L2 Processing Date : May 20 2012

Contents

1	Front	2
2	OBI	3
2.1	OBI	3
2.1.1	Images	3
2.1.2	Bias	3
2.1.3	Parameters	4
2.1.4	Events	4
2.2	Compared Parameters	5
2.3	Star Slots	6
2.4	FID Slots	6
A	Summary	7
A.1	Status	7
A.2	Comments	7

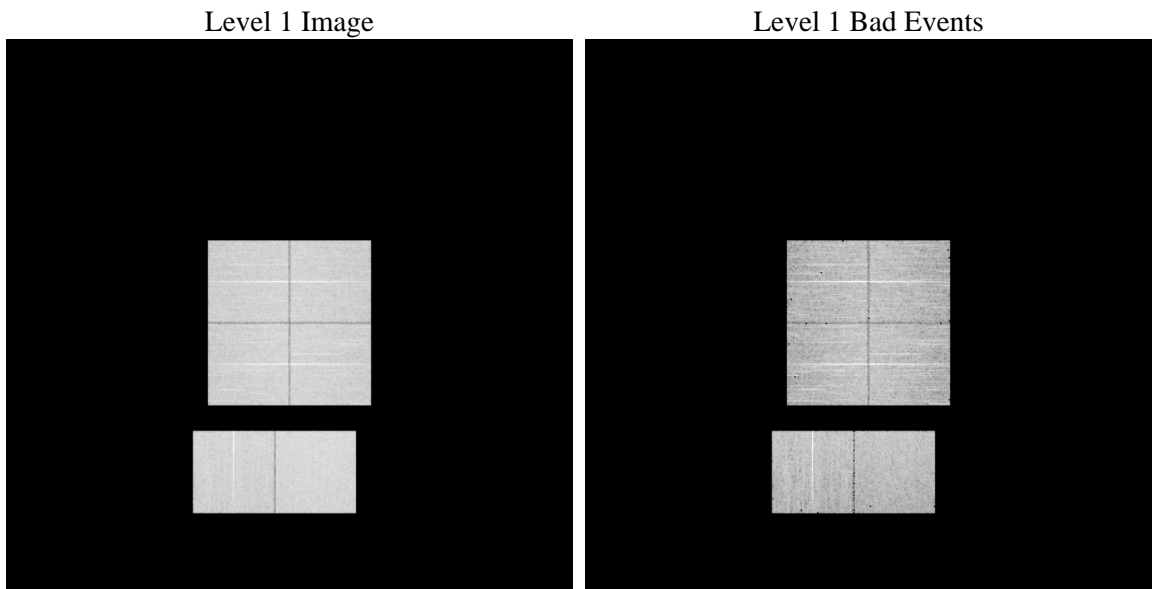
1 Front

seq_num	 	Sequence number
obs_id	57645	Observation id
title	ACIS-012367 diagnostics	Proposal title
observer	CHANDRA engineering request/realtime commanding	Principal investig
object	 	Source name
dtcycle	0	
cycle	P	events from which exps? Prim/Second/Both
ra_targ	0.0	Observer's specified target RA [deg]
dec_targ	0.0	Observer's specified target Dec [deg]
ra_nom	308.02467102097	Nominal RA [deg]
dec_nom	-25.014901549371	Nominal Dec [deg]
roll_nom	297.85735751261	Nominal Roll [deg]
revision	2	Processing version of data
ontime	7793.981472671	Sum of GTIs [s]
livetime	7695.2893862919	Livetime [s]
ontime0	7793.9404326677	Sum of GTIs [s]
ontime1	7793.8993926644	Sum of GTIs [s]
ontime2	7793.8583526611	Sum of GTIs [s]
ontime3	7794.0225126743	Sum of GTIs [s]
ontime6	7793.8173126578	Sum of GTIs [s]
ontime7	7793.981472671	Sum of GTIs [s]
l2events	548491	Number of level 2 events

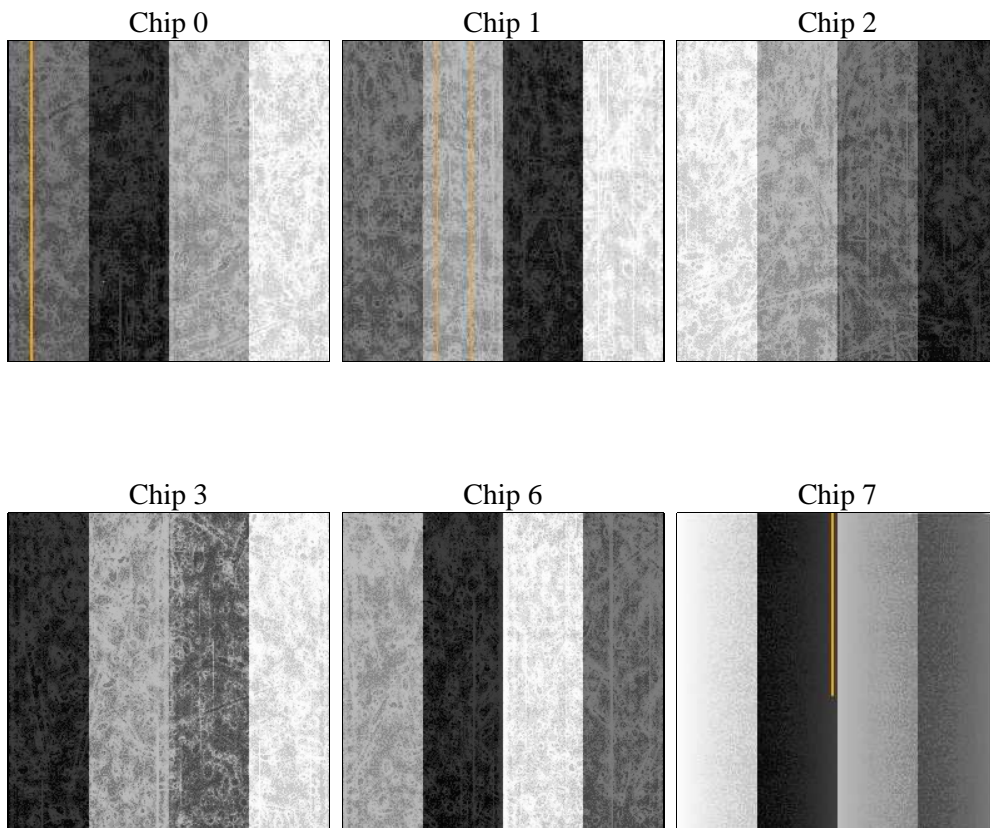
2 OBI

2.1 OBI

2.1.1 Images



2.1.2 Bias



2.1.3 Parameters

obi_num	0	Obi number	sched_exp_time	0.0	[s] Scheduled observation exposure time
ascdsver	8.4.4	Processing system revision	ontime	7793.981472671	Sum of GTIs [s]
caldsver	4.4.9	 	ontime0	7793.9404326677	Sum of GTIs [s]
date	2012-05-20T10:36:23	Date and time of file creation	ontime1	7793.8993926644	Sum of GTIs [s]
revision	2	Processing version of data	ontime2	7793.8583526611	Sum of GTIs [s]
			ontime3	7794.0225126743	Sum of GTIs [s]
			ontime6	7793.8173126578	Sum of GTIs [s]
			ontime7	7793.981472671	Sum of GTIs [s]
			l1events	979159	Number of level 1 events

2.1.4 Events

	ccd 0	ccd 1	ccd 2	ccd 3	ccd 6	ccd 7		ccd 0	ccd 1	ccd 2	ccd 3	ccd 6	ccd 7
level 1 events	154938	153895	160192	160495	163494	186145	grade 0 events	48168	47727	48936	49918	49527	25151
rejected events	65223	63233	70496	69232	69360	62491		31%	31%	30%	31%	30%	13%
rejected %	42%	41%	44%	43%	42%	33%	grade 1 events	332	267	374	371	306	147
								0%	0%	0%	0%	0%	0%
							grade 2 events	16094	16738	15629	15788	16687	26755
								10%	10%	9%	9%	10%	14%
							grade 3 events	5874	6018	5965	6214	6005	11783
								3%	3%	3%	3%	3%	6%
							grade 4 events	5854	5920	6059	6069	6143	11524
								3%	3%	3%	3%	3%	6%
							grade 5 events	3717	3814	3407	4097	4073	10470
								2%	2%	2%	2%	2%	5%
							grade 6 events	13725	14259	13107	13274	15772	48441
								8%	9%	8%	8%	9%	26%
							grade 7 events	61174	59152	66715	64764	64981	51874
								39%	38%	41%	40%	39%	27%

2.2 Compared Parameters

Parameter	Planned	Actual	Parameter	Planned	Actual
Instrument	ACIS	ACIS	Obspar format version number	7	7
Detector	ACIS-012367	ACIS-012367	Obspar file type	PREDICTED	ACTUAL
Grating	NONE	NONE	Obspar update status	NONE	UPDATED
Data mode	FAINT	FAINT	On-chip summing requested	N	N
Observation mode	SECONDARY	SECONDARY	Subarray requested	NONE	NONE
[deg] Pointing RA	0	308.0246710209693	Alternating exposures requested	N	N
[deg] Pointing Dec	0	-25.01490154937063	[s] Primary exposure time	3.2	3.2
[deg] Pointing Roll	0.0	297.8573575126053			
[mm] SIM focus pos	-1.429586	-0.6828225247311905			
[mm] SIM defocus	0.1037507710433287	0.8505141146731063			
[mm] SIM translation stage pos	250.455976	250.466033080201			
[mm] SIM translation stage offset	0	-0.01005468664627074			
[s] Observation start time (MET)	335606037.503412	335606036.47841			
Observation start date	2008-08-20T07:53:58	2008-08-20T07:53:56			
[s] Observation end time (MET)	335616392.053921	335616391.02892			
Observation end date	2008-08-20T10:46:32	2008-08-20T10:46:31			
Read mode	TIMED	TIMED			

2.3 Star Slots

2.4 FID Slots

A Summary

A.1 Status

V&V Scientist	Jen Lauer
V&V Date (YYYY-MM-DD)	2012.05.29
V&V Edition	1
V&V Disposition and Status	OK
V&V Charge Time	7.793981472671

A.2 Comments