

V&V Reference Report

L2 ASCDS Version : 8.4.4

Observation 57629 - L2 Version 2
Chandra X-Ray Center

L2 Processing Date : May 20 2012

Contents

1	Front	2
2	OBI	3
2.1	OBI	3
2.1.1	Images	3
2.1.2	Bias	3
2.1.3	Parameters	4
2.1.4	Events	4
2.2	Compared Parameters	5
2.3	Star Slots	6
2.4	FID Slots	6
A	Summary	7
A.1	Status	7
A.2	Comments	7

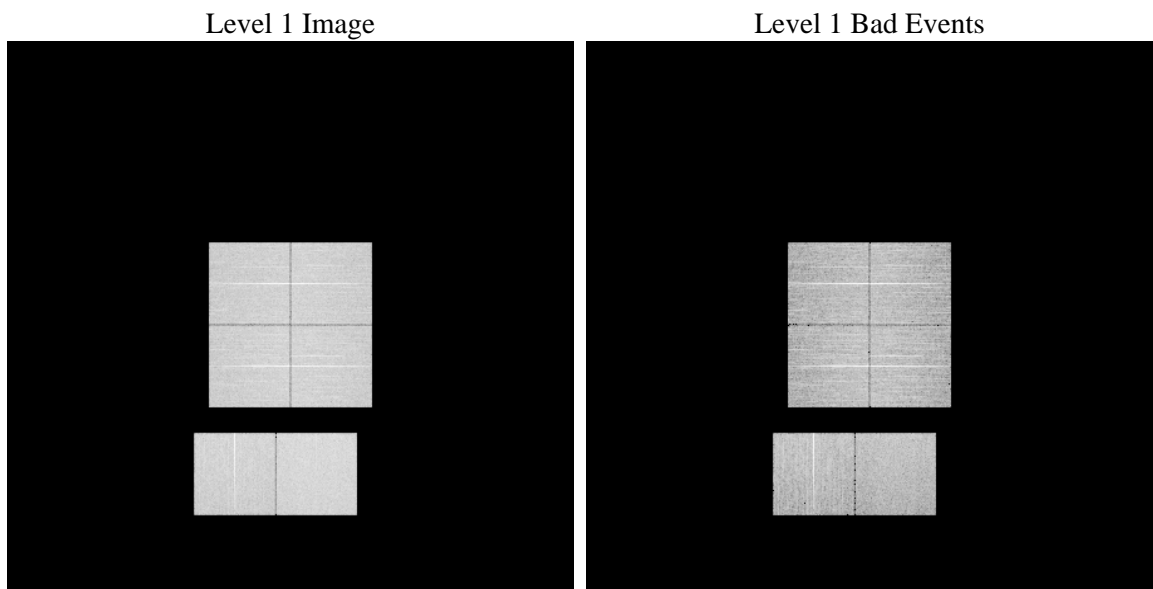
1 Front

seq_num	 	Sequence number
obs_id	57629	Observation id
title	ACIS-012367 diagnostics	Proposal title
observer	CHANDRA engineering request/realtime commanding	Principal investig
object	 	Source name
dtcycle	0	
cycle	P	events from which exps? Prim/Second/Both
ra_targ	0.0	Observer's specified target RA [deg]
dec_targ	0.0	Observer's specified target Dec [deg]
ra_nom	346.97932991669	Nominal RA [deg]
dec_nom	-38.62302763931	Nominal Dec [deg]
roll_nom	13.947133596444	Nominal Roll [deg]
revision	2	Processing version of data
ontime	8236.7999693751	Sum of GTIs [s]
livetime	8132.5006485574	Livetime [s]
ontime0	8236.7999693751	Sum of GTIs [s]
ontime1	8236.7999693751	Sum of GTIs [s]
ontime2	8236.7999693751	Sum of GTIs [s]
ontime3	8233.5589591265	Sum of GTIs [s]
ontime6	8236.7999693751	Sum of GTIs [s]
ontime7	8236.7999693751	Sum of GTIs [s]
l2events	559759	Number of level 2 events

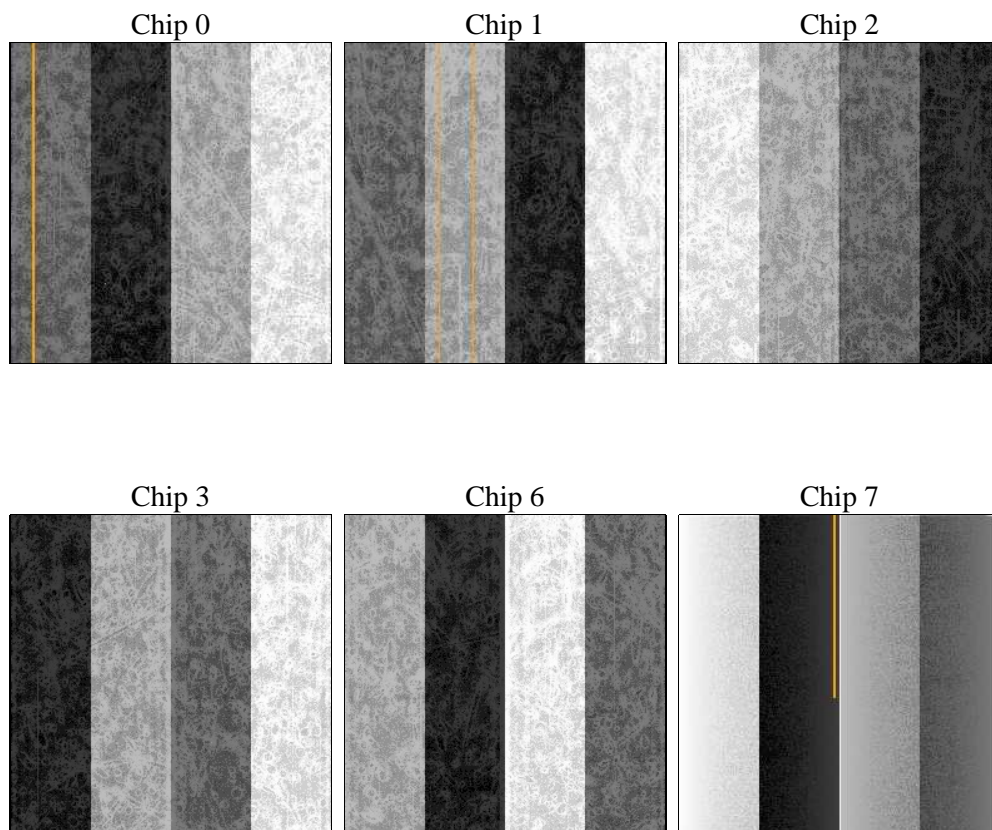
2 OBI

2.1 OBI

2.1.1 Images



2.1.2 Bias



2.1.3 Parameters

obi_num	0	Obi number	sched_exp_time	0.0	[s] Scheduled observation exposure time
ascdsver	8.4.4	Processing system revision	ontime	8236.7999693751	Sum of GTIs [s]
caldsver	4.4.9	 	ontime0	8236.7999693751	Sum of GTIs [s]
date	2012-05-20T01:59:50	Date and time of file creation	ontime1	8236.7999693751	Sum of GTIs [s]
revision	2	Processing version of data	ontime2	8236.7999693751	Sum of GTIs [s]
			ontime3	8233.5589591265	Sum of GTIs [s]
			ontime6	8236.7999693751	Sum of GTIs [s]
			ontime7	8236.7999693751	Sum of GTIs [s]
			l1events	1026437	Number of level 1 events

2.1.4 Events

	ccd 0	ccd 1	ccd 2	ccd 3	ccd 6	ccd 7		ccd 0	ccd 1	ccd 2	ccd 3	ccd 6	ccd 7
level 1 events	160172	162530	166138	168780	171641	197176	grade 0 events	49073	48832	50220	51173	50970	25070
rejected events	69530	70330	74586	75871	75893	68768		30%	30%	30%	30%	29%	12%
rejected %	43%	43%	44%	44%	44%	34%	grade 1 events	351	305	387	390	332	173
								0%	0%	0%	0%	0%	0%
							grade 2 events	16294	17105	16024	16091	16940	28019
								10%	10%	9%	9%	9%	14%
							grade 3 events	6089	6142	6204	6199	6162	12255
								3%	3%	3%	3%	3%	6%
							grade 4 events	5951	6158	6255	6452	6360	11953
								3%	3%	3%	3%	3%	6%
							grade 5 events	3888	4164	3665	4303	4418	11193
								2%	2%	2%	2%	2%	5%
							grade 6 events	13661	14377	13283	13347	15717	51644
								8%	8%	7%	7%	9%	26%
							grade 7 events	64865	65447	70100	70825	70742	56869
								40%	40%	42%	41%	41%	28%

2.2 Compared Parameters

Parameter	Planned	Actual	Parameter	Planned	Actual
Instrument	ACIS	ACIS	Obspar format version number	7	7
Detector	ACIS-012367	ACIS-012367	Obspar file type	PREDICTED	ACTUAL
Grating	NONE	NONE	Obspar update status	NONE	UPDATED
Data mode	FAINT	FAINT	Number of optional ACIS chips dropped	0	0
Observation mode	SECONDARY	SECONDARY	On-chip summing requested	N	N
[deg] Pointing RA	0	346.9793299166914	Subarray requested	NONE	NONE
[deg] Pointing Dec	0	-38.62302763930959	Alternating exposures requested	N	N
[deg] Pointing Roll	0.0	13.94713359644426	[s] Primary exposure time	3.2	3.2
[mm] SIM focus pos	-1.429586	-0.7809083437167272			
[mm] SIM defocus	0.1037507710433287	0.7524282956875696			
[mm] SIM translation stage pos	250.455976	250.4635187648994			
[mm] SIM translation stage offset	0	-0.007540371344731511			
[s] Observation start time (MET)	336555839.450031	336555838.42504			
Observation start date	2008-08-31T07:43:59	2008-08-31T07:43:58			
[s] Observation end time (MET)	336577417.75109	336577416.7261			
Observation end date	2008-08-31T13:43:38	2008-08-31T13:43:36			
Read mode	TIMED	TIMED			

2.3 Star Slots

2.4 FID Slots

A Summary

A.1 Status

V&V Scientist	Beth Sundheim
V&V Date (YYYY-MM-DD)	2012.05.27
V&V Edition	1
V&V Disposition and Status	OK
V&V Charge Time	8.2367999693751

A.2 Comments