

V&V Reference Report

L2 ASCDS Version : 8.4.4

Observation 57574 - L2 Version 2
Chandra X-Ray Center

L2 Processing Date : May 22 2012

Contents

| | | |
|----------|-------------------------------|----------|
| 1 | Front | 2 |
| 2 | OBI | 3 |
| 2.1 | OBI | 3 |
| 2.1.1 | Images | 3 |
| 2.1.2 | Bias | 3 |
| 2.1.3 | Parameters | 4 |
| 2.1.4 | Events | 4 |
| 2.2 | Compared Parameters | 5 |
| 2.3 | Star Slots | 6 |
| 2.4 | FID Slots | 6 |
| A | Summary | 7 |
| A.1 | Status | 7 |
| A.2 | Comments | 7 |

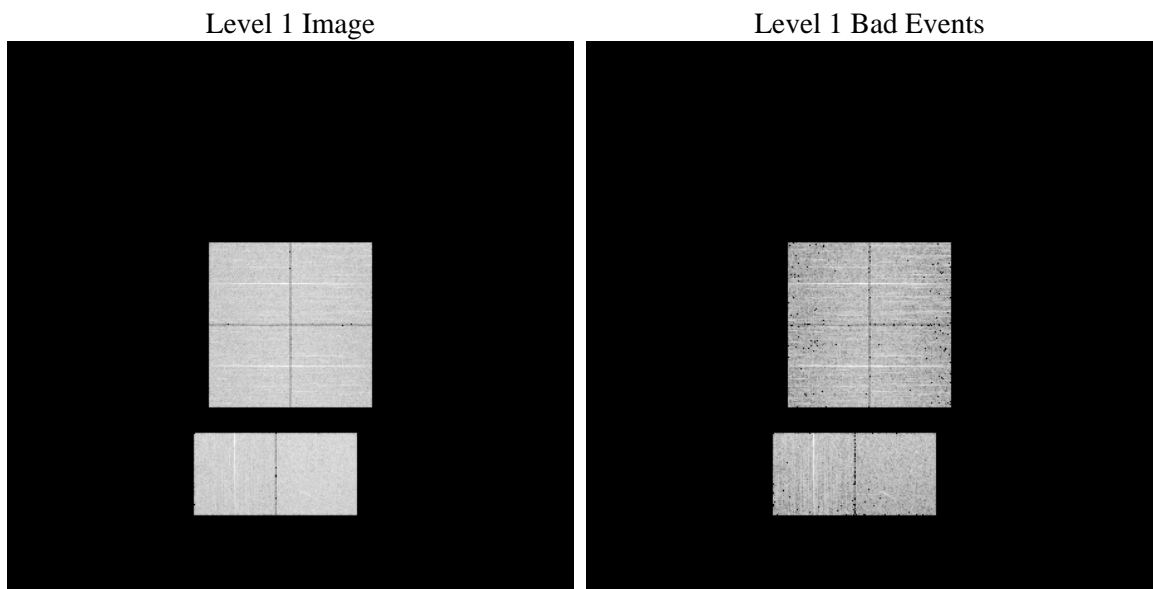
1 Front

| | | |
|----------|---|---|
| seq_num | | Sequence number |
| obs_id | 57574 | Observation id |
| title | ACIS-012367 diagnostics | Proposal title |
| observer | CHANDRA engineering request/realtime commanding | Principal investig |
| object | | Source name |
| dtcycle | 0 | |
| cycle | P | events from which exps? Prim/Second/Both |
| ra_targ | 0.0 | Observer's specified target RA [deg] |
| dec_targ | 0.0 | Observer's specified target Dec [deg] |
| ra_nom | 1.978226613098 | Nominal RA [deg] |
| dec_nom | 26.978845042949 | Nominal Dec [deg] |
| roll_nom | 194.57721796906 | Nominal Roll [deg] |
| revision | 2 | Processing version of data |
| ontime | 4421.4086875319 | Sum of GTIs [s] |
| livetime | 4365.4221484777 | Livetime [s] |
| ontime0 | 4421.3676475286 | Sum of GTIs [s] |
| ontime1 | 4421.3266075253 | Sum of GTIs [s] |
| ontime2 | 4421.285567522 | Sum of GTIs [s] |
| ontime3 | 4421.4497275352 | Sum of GTIs [s] |
| ontime6 | 4421.2445275187 | Sum of GTIs [s] |
| ontime7 | 4421.4086875319 | Sum of GTIs [s] |
| l2events | 295972 | Number of level 2 events |

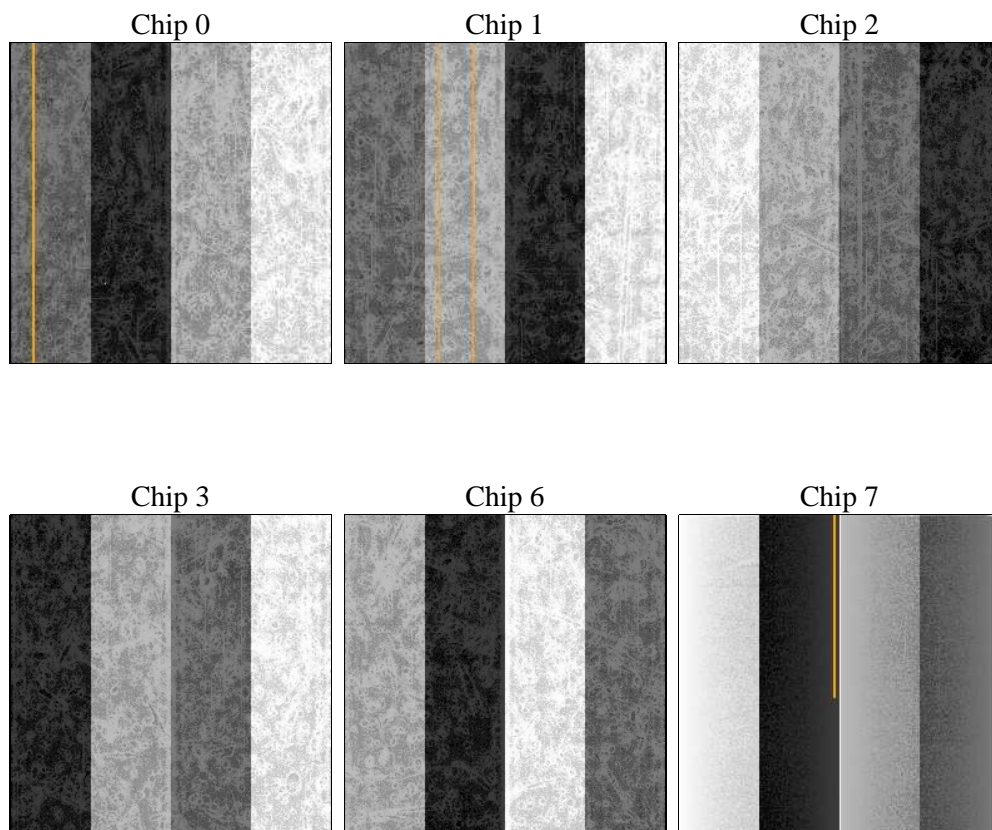
2 OBI

2.1 OBI

2.1.1 Images



2.1.2 Bias



2.1.3 Parameters

| | | | | | |
|----------|---------------------|--------------------------------|----------------|-----------------|---|
| obi_num | 0 | Obi number | sched_exp_time | 0.0 | [s] Scheduled observation exposure time |
| ascdsver | 8.4.4 | Processing system revision | ontime | 4421.4086875319 | Sum of GTIs [s] |
| caldbver | 4.4.9 | | ontime0 | 4421.3676475286 | Sum of GTIs [s] |
| date | 2012-05-22T10:48:04 | Date and time of file creation | ontime1 | 4421.3266075253 | Sum of GTIs [s] |
| revision | 2 | Processing version of data | ontime2 | 4421.285567522 | Sum of GTIs [s] |
| | | | ontime3 | 4421.4497275352 | Sum of GTIs [s] |
| | | | ontime6 | 4421.2445275187 | Sum of GTIs [s] |
| | | | ontime7 | 4421.4086875319 | Sum of GTIs [s] |
| | | | l1events | 539778 | Number of level 1 events |

2.1.4 Events

| | ccd 0 | ccd 1 | ccd 2 | ccd 3 | ccd 6 | ccd 7 | | ccd 0 | ccd 1 | ccd 2 | ccd 3 | ccd 6 | ccd 7 |
|-----------------|-------|-------|-------|-------|-------|--------|----------------|-------|-------|-------|-------|-------|-------|
| level 1 events | 84030 | 87633 | 86540 | 86325 | 91012 | 104238 | grade 0 events | 26198 | 25708 | 26524 | 26763 | 26523 | 13027 |
| rejected events | 35622 | 39025 | 38154 | 37832 | 40756 | 36016 | | 31% | 29% | 30% | 31% | 29% | 12% |
| rejected % | 42% | 44% | 44% | 43% | 44% | 34% | grade 1 events | 160 | 153 | 190 | 215 | 175 | 111 |
| | | | | | | | | 0% | 0% | 0% | 0% | 0% | 0% |
| | | | | | | | grade 2 events | 8606 | 9104 | 8235 | 8402 | 8879 | 14894 |
| | | | | | | | | 10% | 10% | 9% | 9% | 9% | 14% |
| | | | | | | | grade 3 events | 3172 | 3143 | 3270 | 3193 | 3215 | 6464 |
| | | | | | | | | 3% | 3% | 3% | 3% | 3% | 6% |
| | | | | | | | grade 4 events | 3211 | 3194 | 3319 | 3276 | 3346 | 6307 |
| | | | | | | | | 3% | 3% | 3% | 3% | 3% | 6% |
| | | | | | | | grade 5 events | 2135 | 2212 | 1906 | 2330 | 2345 | 5821 |
| | | | | | | | | 2% | 2% | 2% | 2% | 2% | 5% |
| | | | | | | | grade 6 events | 7260 | 7493 | 7074 | 6891 | 8321 | 27584 |
| | | | | | | | | 8% | 8% | 8% | 7% | 9% | 26% |
| | | | | | | | grade 7 events | 33288 | 36626 | 36022 | 35255 | 38208 | 30030 |
| | | | | | | | | 39% | 41% | 41% | 40% | 41% | 28% |

2.2 Compared Parameters

| Parameter | Planned | Actual | Parameter | Planned | Actual |
|-----------------------------------|---------------------|----------------------|---------------------------------------|-----------|---------|
| Instrument | ACIS | ACIS | Obspar format version number | 7 | 7 |
| Detector | ACIS-012367 | ACIS-012367 | Obspar file type | PREDICTED | ACTUAL |
| Grating | NONE | NONE | Obspar update status | NONE | UPDATED |
| Data mode | FAINT | FAINT | Number of optional ACIS chips dropped | 0 | 0 |
| Observation mode | SECONDARY | SECONDARY | On-chip summing requested | N | N |
| [deg] Pointing RA | 0 | 1.97822661309795 | Subarray requested | NONE | NONE |
| [deg] Pointing Dec | 0 | 26.97884504294885 | Alternating exposures requested | N | N |
| [deg] Pointing Roll | 0.0 | 194.5772179690573 | [s] Primary exposure time | 3.2 | 3.2 |
| [mm] SIM focus pos | -1.429586 | -0.7809083437167272 | | | |
| [mm] SIM defocus | 0.1037507710433287 | 0.7524282956875696 | | | |
| [mm] SIM translation stage pos | 250.455976 | 250.466033080201 | | | |
| [mm] SIM translation stage offset | 0 | -0.01005468664627074 | | | |
| [s] Observation start time (MET) | 339299344.334956 | 339299343.30996 | | | |
| Observation start date | 2008-10-02T01:49:04 | 2008-10-02T01:49:03 | | | |
| [s] Observation end time (MET) | 339316804.185815 | 339316803.16081 | | | |
| Observation end date | 2008-10-02T06:40:04 | 2008-10-02T06:40:03 | | | |
| Read mode | TIMED | TIMED | | | |

2.3 Star Slots

2.4 FID Slots

A Summary

A.1 Status

| | |
|----------------------------|-----------------|
| V&V Scientist | Jen Lauer |
| V&V Date (YYYY-MM-DD) | 2012.05.30 |
| V&V Edition | 1 |
| V&V Disposition and Status | OK |
| V&V Charge Time | 4.4214086875319 |

A.2 Comments