

V&V Reference Report

L2 ASCDS Version : 8.4.4

Observation 57437 - L2 Version 3
Chandra X-Ray Center

L2 Processing Date : May 26 2012

Contents

1	Front	2
2	OBI	3
2.1	OBI	3
2.1.1	Images	3
2.1.2	Bias	3
2.1.3	Parameters	4
2.1.4	Events	4
2.2	Compared Parameters	5
2.3	Star Slots	6
2.4	FID Slots	6
A	Summary	7
A.1	Status	7
A.2	Comments	7

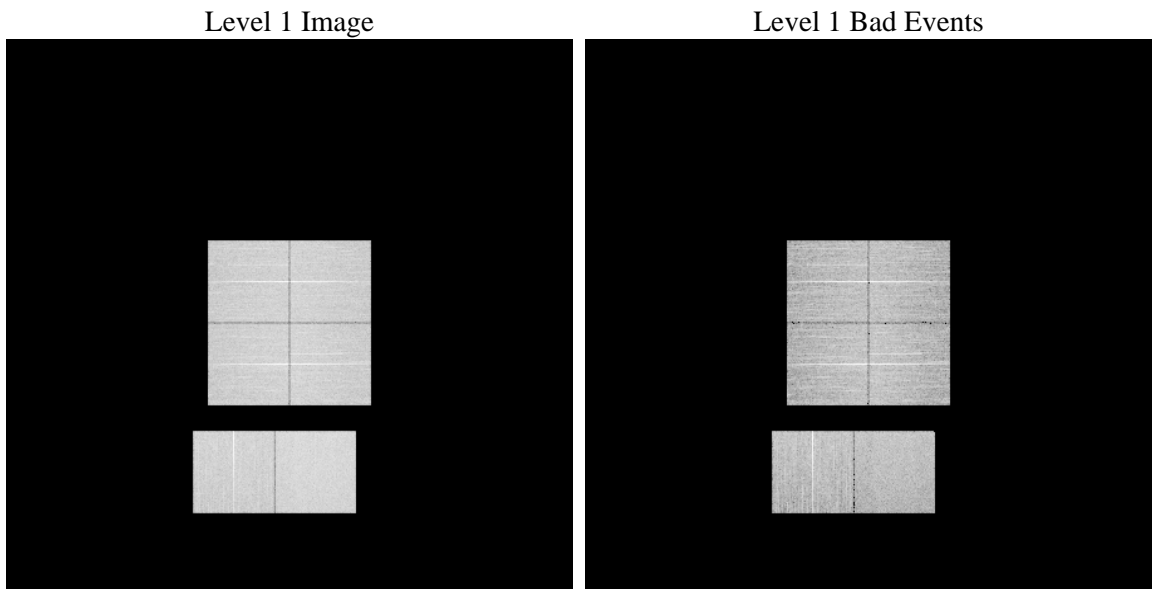
1 Front

seq_num	 	Sequence number
obs_id	57437	Observation id
title	ACIS-012367 diagnostics	Proposal title
observer	CHANDRA engineering request/realtime commanding	Principal investig
object	 	Source name
dtcycle	0	
cycle	P	events from which exps? Prim/Second/Both
ra_targ	0.0	Observer's specified target RA [deg]
dec_targ	0.0	Observer's specified target Dec [deg]
ra_nom	179.21125790448	Nominal RA [deg]
dec_nom	-58.139757256246	Nominal Dec [deg]
roll_nom	81.178647709726	Nominal Roll [deg]
revision	3	Processing version of data
ontime	7995.5153224468	Sum of GTIs [s]
livetime	7894.2712931127	Livetime [s]
ontime0	7995.4742824435	Sum of GTIs [s]
ontime1	7995.4332424402	Sum of GTIs [s]
ontime2	7995.3922024369	Sum of GTIs [s]
ontime3	7995.5563624501	Sum of GTIs [s]
ontime6	7995.3511624336	Sum of GTIs [s]
ontime7	7995.5153224468	Sum of GTIs [s]
l2events	511020	Number of level 2 events

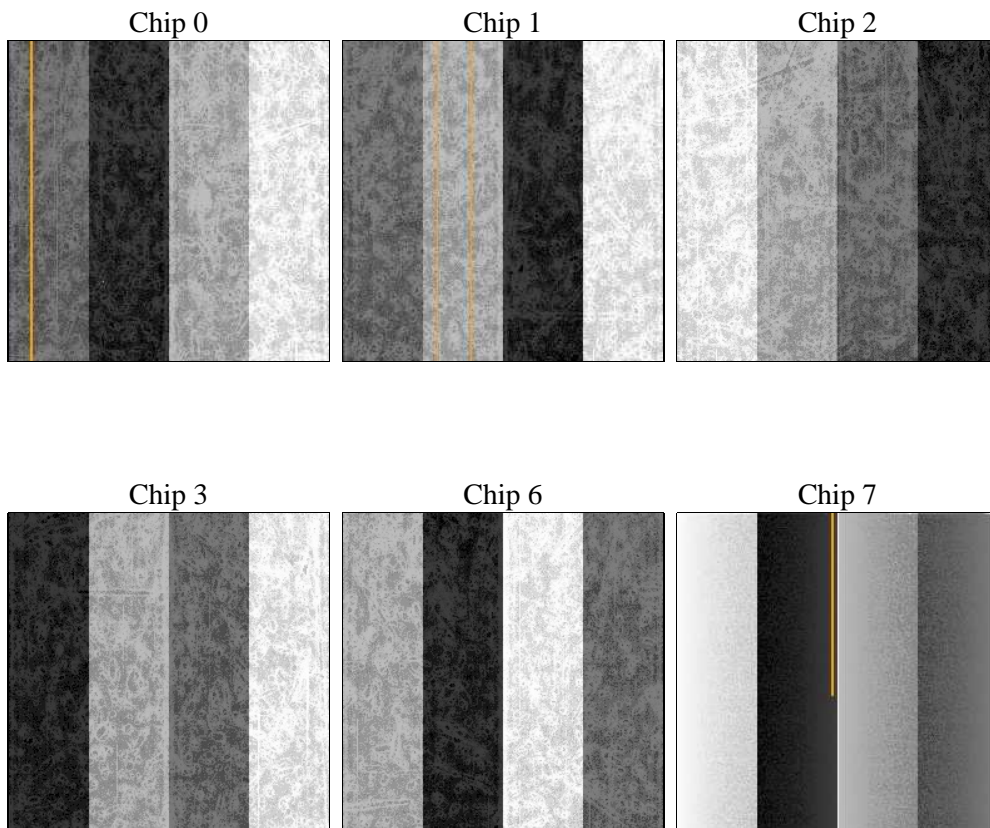
2 OBI

2.1 OBI

2.1.1 Images



2.1.2 Bias



2.1.3 Parameters

obi_num	1	Obi number	sched_exp_time	7560	[s] Scheduled observation exposure time
ascdsver	8.4.4	Processing system revision	ontime	7995.5153224468	Sum of GTIs [s]
caldsver	4.4.9	 	ontime0	7995.4742824435	Sum of GTIs [s]
date	2012-05-26T07:47:50	Date and time of file creation	ontime1	7995.4332424402	Sum of GTIs [s]
revision	3	Processing version of data	ontime2	7995.3922024369	Sum of GTIs [s]
			ontime3	7995.5563624501	Sum of GTIs [s]
			ontime6	7995.3511624336	Sum of GTIs [s]
			ontime7	7995.5153224468	Sum of GTIs [s]
			l1events	969958	Number of level 1 events

2.1.4 Events

	ccd 0	ccd 1	ccd 2	ccd 3	ccd 6	ccd 7		ccd 0	ccd 1	ccd 2	ccd 3	ccd 6	ccd 7
level 1 events	152788	152209	156165	158759	162061	187976	grade 0 events	44802	44306	46190	46560	45914	23062
rejected events	69778	68816	72652	75023	75540	68489		29%	29%	29%	29%	28%	12%
rejected %	45%	45%	46%	47%	46%	36%	grade 1 events	315	283	374	361	298	172
								0%	0%	0%	0%	0%	0%
							grade 2 events	15328	15902	14691	14650	15804	26415
								10%	10%	9%	9%	9%	14%
							grade 3 events	5750	5660	5755	5794	5721	11365
								3%	3%	3%	3%	3%	6%
							grade 4 events	5556	5568	5883	5666	5724	11056
								3%	3%	3%	3%	3%	5%
							grade 5 events	3974	4007	3836	4348	4334	10900
								2%	2%	2%	2%	2%	5%
							grade 6 events	12762	13182	12193	12259	14545	49327
								8%	8%	7%	7%	8%	26%
							grade 7 events	64301	63301	67243	69121	69721	55679
								42%	41%	43%	43%	43%	29%

2.2 Compared Parameters

Parameter	Planned	Actual	Parameter	Planned	Actual
Instrument	ACIS	ACIS	Obspar format version number	7	7
Detector	ACIS-012367	ACIS-012367	Obspar file type	PREDICTED	ACTUAL
Grating	NONE	NONE	Obspar update status	OVERRIDE	OVERRIDE
Data mode	FAINT	FAINT	Number of optional ACIS chips dropped	0	0
Observation mode	SECONDARY	SECONDARY	On-chip summing requested	N	N
[deg] Pointing RA	179.2085316680197	179.2112579044839	Subarray requested	NONE	NONE
[deg] Pointing Dec	-58.13945984667318	-58.13975725624589	Alternating exposures requested	N	N
[deg] Pointing Roll	81.17618095455285	81.17864770972626	[s] Primary exposure time	3.2	3.2
[mm] SIM focus pos	-0.68282252473119	-0.68282252473119			
[mm] SIM defocus	0.8505140384245534	0.8505140384245534			
[mm] SIM translation stage pos	250.4635187649	250.4635187649			
[mm] SIM translation stage offset	-0.007542945905271381	-0.007542945905271381			
[s] Observation start time (MET)	346157381.873346	346157381.873346			
Observation start date	2008-12-20T11:17:00	2008-12-20T10:49:41			
[s] Observation end time (MET)	346174613.721819	346174613.721819			
Observation end date	2008-12-20T13:23:00	2008-12-20T15:36:53			
Read mode	TIMED	TIMED			

2.3 Star Slots

2.4 FID Slots

A Summary

A.1 Status

V&V Scientist	Jen Lauer
V&V Date (YYYY-MM-DD)	2012.06.01
V&V Edition	1
V&V Disposition and Status	OK
V&V Charge Time	7.9955153224468

A.2 Comments