

V&V Reference Report

L2 ASCDS Version : 8.4.3.1

Observation 58605 - L2 Version 3
Chandra X-Ray Center

L2 Processing Date : Apr 16 2012

Contents

1	Front	2
2	OBI	3
2.1	OBI	3
2.1.1	Images	3
2.1.2	Bias	3
2.1.3	Parameters	4
2.1.4	Events	4
2.2	Compared Parameters	5
2.3	Star Slots	6
2.4	FID Slots	6
A	Summary	7
A.1	Status	7
A.2	Comments	7

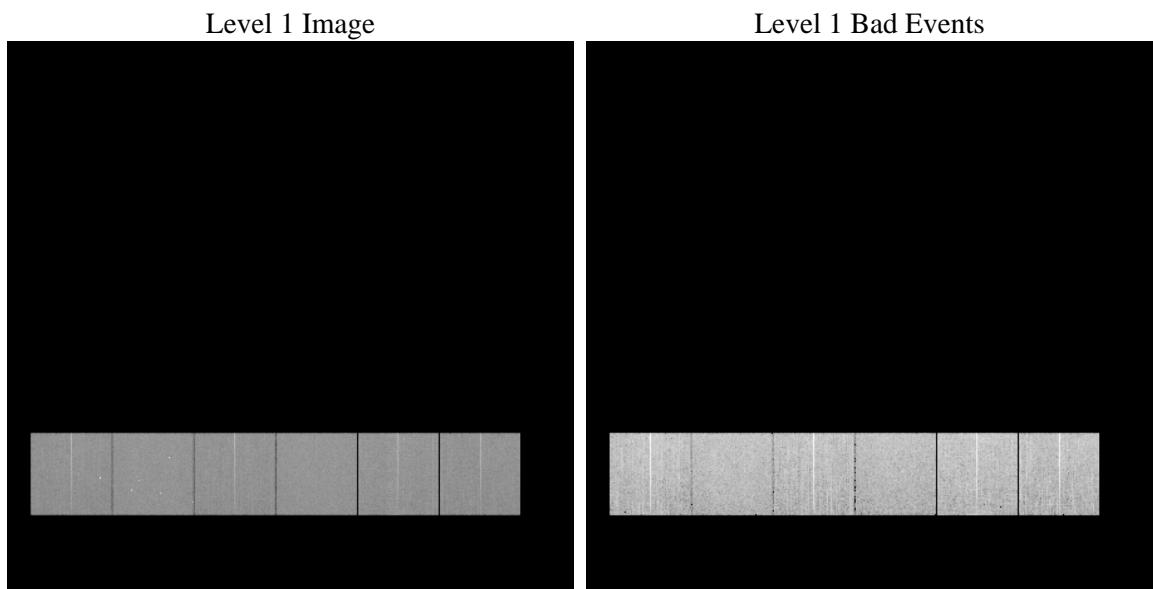
1 Front

seq_num	 	Sequence number
obs_id	58605	Observation id
title	ACIS-456789 diagnostics	Proposal title
observer	CHANDRA engineering request/realtime commanding	Principal investig
object	 	Source name
dtcycle	0	
cycle	P	events from which exps? Prim/Second/Both
ra_targ	0.0	Observer's specified target RA [deg]
dec_targ	0.0	Observer's specified target Dec [deg]
ra_nom	51.897719358597	Nominal RA [deg]
dec_nom	-7.4292360521997	Nominal Dec [deg]
roll_nom	249.01704819864	Nominal Roll [deg]
revision	3	Processing version of data
ontime	8248.703289628	Sum of GTIs [s]
livetime	8144.2532418019	Livetime [s]
ontime4	8248.5801696181	Sum of GTIs [s]
ontime5	8248.6622496247	Sum of GTIs [s]
ontime6	8248.6212096214	Sum of GTIs [s]
ontime7	8248.703289628	Sum of GTIs [s]
ontime8	8248.5391296148	Sum of GTIs [s]
ontime9	8248.7443296313	Sum of GTIs [s]
l2events	815896	Number of level 2 events

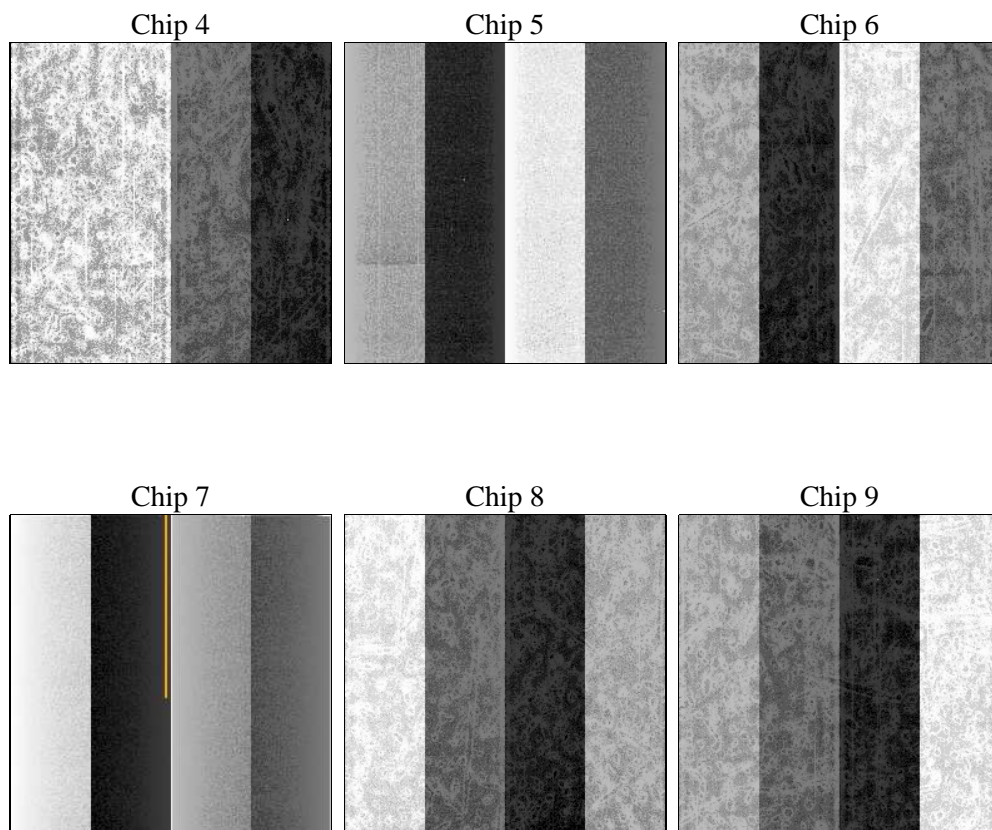
2 OBI

2.1 OBI

2.1.1 Images



2.1.2 Bias



2.1.3 Parameters

obi_num	0	Obi number	sched_exp_time	7260	[s] Scheduled observation exposure time
ascdsver	8.4.3.1	Processing system revision	ontime	8248.703289628	Sum of GTIs [s]
caldsver	4.4.9	 	ontime4	8248.5801696181	Sum of GTIs [s]
date	2012-04-16T14:10:34	Date and time of file creation	ontime5	8248.6622496247	Sum of GTIs [s]
revision	3	Processing version of data	ontime6	8248.6212096214	Sum of GTIs [s]
			ontime7	8248.703289628	Sum of GTIs [s]
			ontime8	8248.5391296148	Sum of GTIs [s]
			ontime9	8248.7443296313	Sum of GTIs [s]
			l1events	1299498	Number of level 1 events

2.1.4 Events

	ccd 4	ccd 5	ccd 6	ccd 7	ccd 8	ccd 9		ccd 4	ccd 5	ccd 6	ccd 7	ccd 8	ccd 9
level 1 events	207184	221612	211092	226138	227050	206422	grade 0 events	77183	29627	75262	36180	78422	73565
rejected events	74879	65959	71573	60966	77155	71462		37%	13%	35%	15%	34%	35%
rejected %	36%	29%	33%	26%	33%	34%	grade 1 events	676	242	436	191	462	463
								0%	0%	0%	0%	0%	0%
							grade 2 events	20898	55861	24277	36089	27163	23141
								10%	25%	11%	15%	11%	11%
							grade 3 events	8935	8143	8696	16101	10309	8948
								4%	3%	4%	7%	4%	4%
							grade 4 events	8772	8097	8990	16027	10167	8803
								4%	3%	4%	7%	4%	4%
							grade 5 events	4066	9454	4179	10159	5193	4545
								1%	4%	1%	4%	2%	2%
							grade 6 events	16871	54369	22631	61164	24250	20775
								8%	24%	10%	27%	10%	10%
							grade 7 events	69783	55819	66621	50227	71084	66182
								33%	25%	31%	22%	31%	32%

2.2 Compared Parameters

Parameter	Planned	Actual	Parameter	Planned	Actual
Instrument	ACIS	ACIS	Obspar format version number	7	7
Detector	ACIS-456789	ACIS-456789	Obspar file type	PREDICTED	ACTUAL
Grating	NONE	NONE	Obspar update status	OVERRIDE	OVERRIDE
Data mode	FAINT	FAINT	Number of optional ACIS chips dropped	0	0
Observation mode	SECONDARY	SECONDARY	On-chip summing requested	N	N
[deg] Pointing RA	51.8976660741759	51.89771935859668	Subarray requested	NONE	NONE
[deg] Pointing Dec	-7.429199335312569	-7.429236052199713	Alternating exposures requested	N	N
[deg] Pointing Roll	249.0170050133723	249.0170481986409	[s] Primary exposure time	3.2	3.2
[mm] SIM focus pos	-0.78090834371673	-0.78090834371673			
[mm] SIM defocus	0.7524282194390134	0.7524282194390134			
[mm] SIM translation stage pos	250.4635187649	250.4635187649			
[mm] SIM translation stage offset	-0.007542945905271381	-0.007542945905271381			
[s] Observation start time (MET)	284246506.316927	284246506.316927			
Observation start date	2007-01-03T21:49:00	2007-01-03T21:21:46			
[s] Observation end time (MET)	284262616.63282	284262616.63282			
Observation end date	2007-01-03T23:50:00	2007-01-04T01:50:16			
Read mode	TIMED	TIMED			

2.3 Star Slots

2.4 FID Slots

A Summary

A.1 Status

V&V Scientist	Jen Lauer
V&V Date (YYYY-MM-DD)	2012.04.19
V&V Edition	1
V&V Disposition and Status	OK
V&V Charge Time	8.248703289628

A.2 Comments

Overclocking values for nodes 1 and 2 of chip 4 are the same. Assumed to be correct.