

# V&V Reference Report

## L2 ASCDS Version : 8.4.4

Observation 58602 - L2 Version 3  
Chandra X-Ray Center

L2 Processing Date : Apr 17 2012

## Contents

<b>1</b>	<b>Front</b>	<b>2</b>
<b>2</b>	<b>OBI</b>	<b>3</b>
2.1	OBI . . . . .	3
2.1.1	Images . . . . .	3
2.1.2	Bias . . . . .	3
2.1.3	Parameters . . . . .	4
2.1.4	Events . . . . .	4
2.2	Compared Parameters . . . . .	5
2.3	Star Slots . . . . .	6
2.4	FID Slots . . . . .	6
<b>A</b>	<b>Summary</b>	<b>7</b>
A.1	Status . . . . .	7
A.2	Comments . . . . .	7

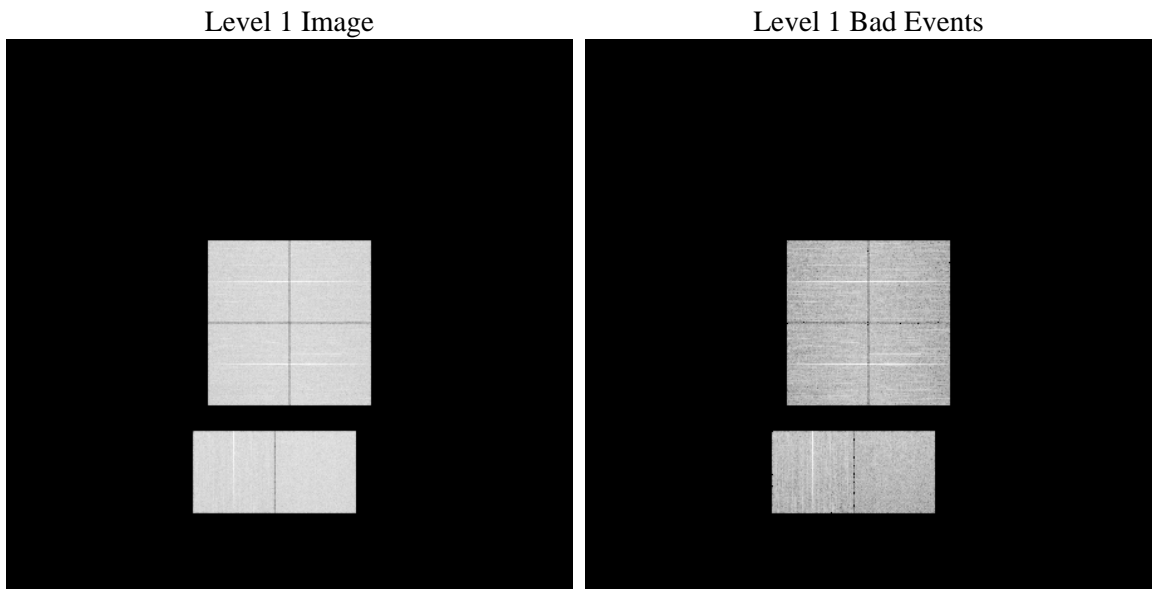
# 1 Front

seq_num	&#160	Sequence number
obs_id	58602	Observation id
title	ACIS-012367 diagnostics	Proposal title
observer	CHANDRA engineering request/realtime commanding	Principal investig
object	&#160	Source name
dtcycle	0	&#160
cycle	P	events from which exps? Prim/Second/Both
ra_targ	0.0	Observer's specified target RA [deg]
dec_targ	0.0	Observer's specified target Dec [deg]
ra_nom	156.74508124161	Nominal RA [deg]
dec_nom	36.66995699172	Nominal Dec [deg]
roll_nom	93.612617293653	Nominal Roll [deg]
revision	3	Processing version of data
ontime	6994.0134151578	Sum of GTIs [s]
livetime	6905.4510060058	Livetime [s]
ontime0	6993.9723751545	Sum of GTIs [s]
ontime1	6993.9313351512	Sum of GTIs [s]
ontime2	6993.8902951479	Sum of GTIs [s]
ontime3	6994.0544551611	Sum of GTIs [s]
ontime6	6990.6082548499	Sum of GTIs [s]
ontime7	6994.0134151578	Sum of GTIs [s]
l2events	766704	Number of level 2 events

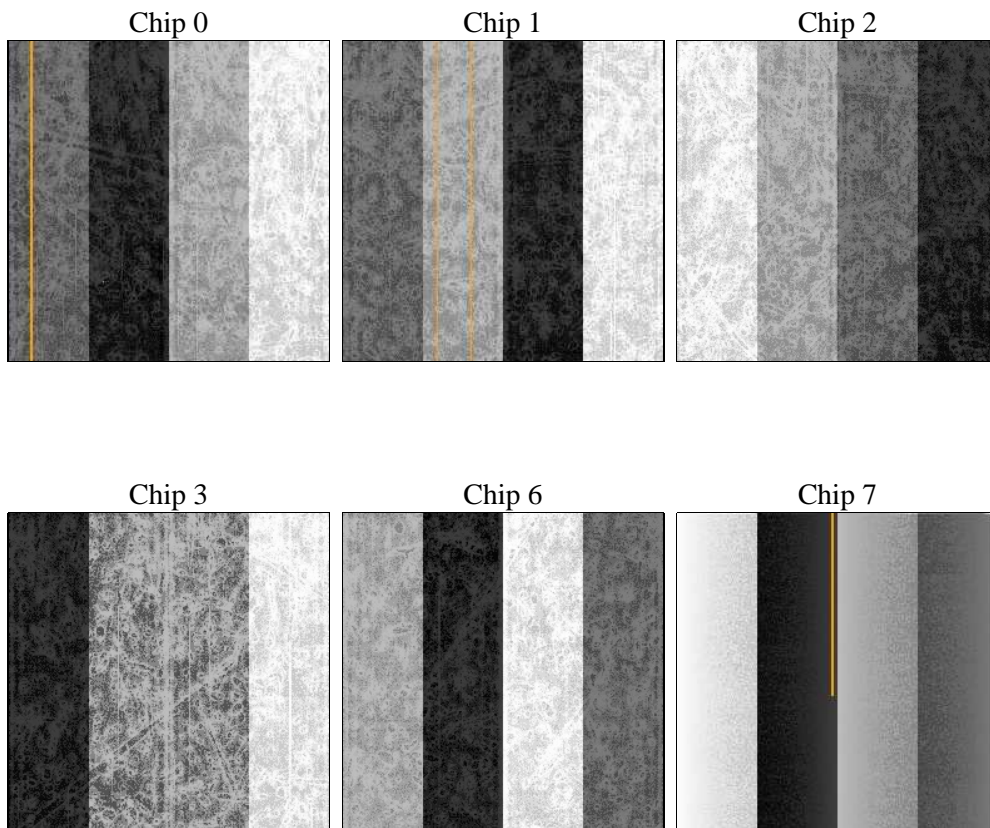
## 2 OBI

### 2.1 OBI

#### 2.1.1 Images



#### 2.1.2 Bias



### 2.1.3 Parameters

obi_num	0	Obi number	sched_exp_time	5760	[s] Scheduled observation exposure time
ascdsver	8.4.4	Processing system revision	ontime	6994.0134151578	Sum of GTIs [s]
caldsver	4.4.9	&#160	ontime0	6993.9723751545	Sum of GTIs [s]
date	2012-04-17T21:01:54	Date and time of file creation	ontime1	6993.9313351512	Sum of GTIs [s]
revision	3	Processing version of data	ontime2	6993.8902951479	Sum of GTIs [s]
			ontime3	6994.0544551611	Sum of GTIs [s]
			ontime6	6990.6082548499	Sum of GTIs [s]
			ontime7	6994.0134151578	Sum of GTIs [s]
			l1events	1188571	Number of level 1 events

### 2.1.4 Events

	ccd 0	ccd 1	ccd 2	ccd 3	ccd 6	ccd 7		ccd 0	ccd 1	ccd 2	ccd 3	ccd 6	ccd 7
level 1 events	193267	192068	193503	196446	202566	210721	grade 0 events	71265	70084	71720	73347	70600	34808
rejected events	63547	60876	65670	65596	68681	56514		36%	36%	37%	37%	34%	16%
rejected %	32%	31%	33%	33%	33%	26%	grade 1 events	472	407	564	496	410	158
								0%	0%	0%	0%	0%	0%
							grade 2 events	23568	25251	21587	22177	24581	34420
								12%	13%	11%	11%	12%	16%
							grade 3 events	8503	8382	8392	8600	8396	14585
								4%	4%	4%	4%	4%	6%
							grade 4 events	8278	8133	8516	8724	8328	14370
								4%	4%	4%	4%	4%	6%
							grade 5 events	3389	3557	3198	3666	3555	8822
								1%	1%	1%	1%	1%	4%
							grade 6 events	20041	21291	19600	19937	23869	58251
								10%	11%	10%	10%	11%	27%
							grade 7 events	57751	54963	59926	59499	62827	45307
								29%	28%	30%	30%	31%	21%

## 2.2 Compared Parameters

Parameter	Planned	Actual	Parameter	Planned	Actual
Instrument	ACIS	ACIS	Obspar format version number	7	7
Detector	ACIS-012367	ACIS-012367	Obspar file type	PREDICTED	ACTUAL
Grating	NONE	NONE	Obspar update status	OVERRIDE	OVERRIDE
Data mode	FAINT	FAINT	Number of optional ACIS chips dropped	0	0
Observation mode	SECONDARY	SECONDARY	On-chip summing requested	N	N
[deg] Pointing RA	156.7452075464405	156.7450812416097	Subarray requested	NONE	NONE
[deg] Pointing Dec	36.66984272589932	36.6699569917204	Alternating exposures requested	N	N
[deg] Pointing Roll	93.61253017952339	93.61261729365296	[s] Primary exposure time	3.2	3.2
[mm] SIM focus pos	-0.78090834371673	-0.78090834371673			
[mm] SIM defocus	0.7524282194390134	0.7524282194390134			
[mm] SIM translation stage pos	250.4635187649	250.4635187649			
[mm] SIM translation stage offset	-0.007542945905271381	-0.007542945905271381			
[s] Observation start time (MET)	284426670.575459	284426670.575459			
Observation start date	2007-01-05T23:49:00	2007-01-05T23:24:30			
[s] Observation end time (MET)	284435499.093558	284435499.093558			
Observation end date	2007-01-06T01:25:00	2007-01-06T01:51:39			
Read mode	TIMED	TIMED			

## **2.3 Star Slots**

## **2.4 FID Slots**

## A Summary

### A.1 Status

V&V Scientist	Beth Sundheim
V&V Date (YYYY-MM-DD)	2012.04.19
V&V Edition	1
V&V Disposition and Status	OK
V&V Charge Time	6.9940134151578

### A.2 Comments