

# V&V Reference Report

## L2 ASCDS Version : 8.4.4

Observation 58473 - L2 Version 2  
Chandra X-Ray Center

L2 Processing Date : Apr 22 2012

## Contents

<b>1</b>	<b>Front</b>	<b>2</b>
<b>2</b>	<b>OBI</b>	<b>3</b>
2.1	OBI . . . . .	3
2.1.1	Images . . . . .	3
2.1.2	Bias . . . . .	3
2.1.3	Parameters . . . . .	4
2.1.4	Events . . . . .	4
2.2	Compared Parameters . . . . .	5
2.3	Star Slots . . . . .	6
2.4	FID Slots . . . . .	6
<b>A</b>	<b>Summary</b>	<b>7</b>
A.1	Status . . . . .	7
A.2	Comments . . . . .	7

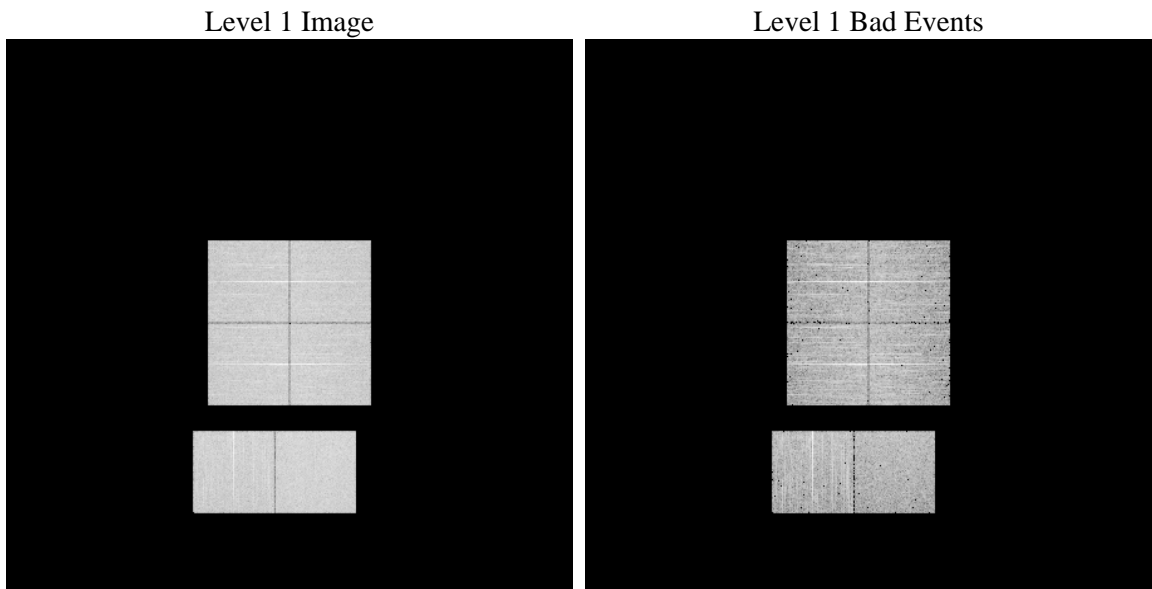
# 1 Front

seq_num	&#160	Sequence number
obs_id	58473	Observation id
title	ACIS-012367 diagnostics	Proposal title
observer	CHANDRA engineering request/realtime commanding	Principal investig
object	&#160	Source name
dtcycle	0	&#160
cycle	P	events from which exps? Prim/Second/Both
ra_targ	0.0	Observer's specified target RA [deg]
dec_targ	0.0	Observer's specified target Dec [deg]
ra_nom	153.02072759075	Nominal RA [deg]
dec_nom	-8.2191109126152	Nominal Dec [deg]
roll_nom	285.79771212092	Nominal Roll [deg]
revision	2	Processing version of data
ontime	4703.9999825358	Sum of GTIs [s]
livetime	4644.4351023482	Livetime [s]
ontime0	4703.9999825358	Sum of GTIs [s]
ontime1	4703.9999825358	Sum of GTIs [s]
ontime2	4703.9999825358	Sum of GTIs [s]
ontime3	4703.9999825358	Sum of GTIs [s]
ontime6	4703.9999825358	Sum of GTIs [s]
ontime7	4703.9999825358	Sum of GTIs [s]
l2events	437484	Number of level 2 events

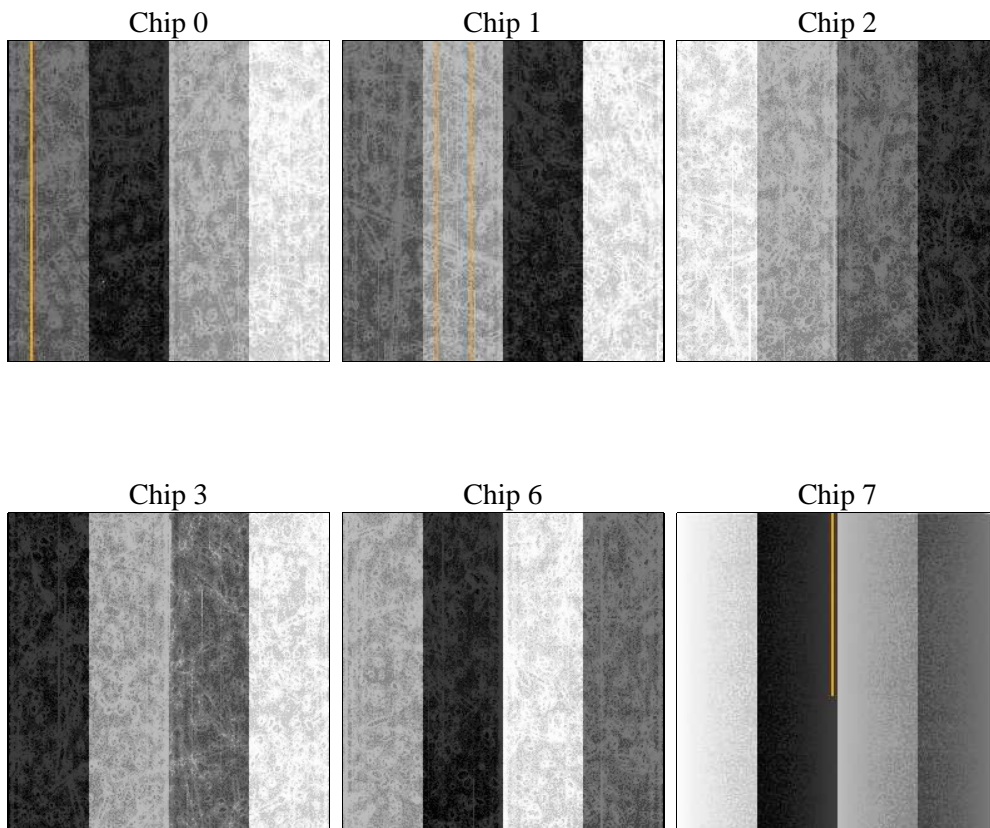
## 2 OBI

### 2.1 OBI

#### 2.1.1 Images



#### 2.1.2 Bias



### 2.1.3 Parameters

obi_num	0	Obi number	sched_exp_time	0.0	[s] Scheduled observation exposure time
ascdsver	8.4.4	Processing system revision	ontime	4703.9999825358	Sum of GTIs [s]
caldsver	4.4.9	&#160	ontime0	4703.9999825358	Sum of GTIs [s]
date	2012-04-22T04:29:09	Date and time of file creation	ontime1	4703.9999825358	Sum of GTIs [s]
revision	2	Processing version of data	ontime2	4703.9999825358	Sum of GTIs [s]
			ontime3	4703.9999825358	Sum of GTIs [s]
			ontime6	4703.9999825358	Sum of GTIs [s]
			ontime7	4703.9999825358	Sum of GTIs [s]
			l1events	705830	Number of level 1 events

### 2.1.4 Events

	ccd 0	ccd 1	ccd 2	ccd 3	ccd 6	ccd 7		ccd 0	ccd 1	ccd 2	ccd 3	ccd 6	ccd 7
level 1 events	111970	111795	116431	116001	120020	129613	grade 0 events	39307	39023	40522	40500	40649	20290
rejected events	39359	39085	43319	42866	44012	36243		35%	34%	34%	34%	33%	15%
rejected %	35%	34%	37%	36%	36%	27%	grade 1 events	278	249	303	306	249	84
								0%	0%	0%	0%	0%	0%
							grade 2 events	12966	13082	12523	12358	13370	20398
								11%	11%	10%	10%	11%	15%
							grade 3 events	4801	4739	4857	4933	4850	9173
								4%	4%	4%	4%	4%	7%
							grade 4 events	4625	4775	4961	4887	4997	9223
								4%	4%	4%	4%	4%	7%
							grade 5 events	2254	2286	2160	2485	2517	6192
								2%	2%	1%	2%	2%	4%
							grade 6 events	10957	11133	10299	10502	12184	34347
								9%	9%	8%	9%	10%	26%
							grade 7 events	36782	36508	40806	40030	41204	29906
								32%	32%	35%	34%	34%	23%

## 2.2 Compared Parameters

Parameter	Planned	Actual
Instrument	ACIS	ACIS
Detector	ACIS-012367	ACIS-012367
Grating	NONE	NONE
Data mode	FAINT	FAINT
Observation mode	SECONDARY	SECONDARY
[deg] Pointing RA	0	153.0207275907519
[deg] Pointing Dec	0	-8.219110912615198
[deg] Pointing Roll	0.0	285.797712120919
[mm] SIM focus pos	-0.782348	-0.6828225247311905
[mm] SIM defocus	0	0.8505141146731063
[mm] SIM translation stage pos	-233.592463	250.466033080201
[mm] SIM translation stage offset	0	-0.01005468664627074
[s] Observation start time (MET)	290825655.679291	290825654.65429
Observation start date	2007-03-21T00:54:16	2007-03-21T00:54:14
[s] Observation end time (MET)	290840577.630001	290840576.605
Observation end date	2007-03-21T05:02:58	2007-03-21T05:02:56
Read mode	TIMED	TIMED

Parameter	Planned	Actual
Obspar format version number	7	7
Obspar file type	PREDICTED	ACTUAL
Obspar update status	NONE	UPDATED
On-chip summing requested	N	N
Subarray requested	NONE	NONE
Alternating exposures requested	N	N
[s] Primary exposure time	3.2	3.2

## **2.3 Star Slots**

## **2.4 FID Slots**

## A Summary

### A.1 Status

V&V Scientist	Jen Lauer
V&V Date (YYYY-MM-DD)	2012.04.23
V&V Edition	1
V&V Disposition and Status	OK
V&V Charge Time	4.7039999825358

### A.2 Comments