

# V&V Reference Report

## L2 ASCDS Version : 8.4.4

Observation 58422 - L2 Version 2  
Chandra X-Ray Center

L2 Processing Date : Apr 23 2012

## Contents

<b>1</b>	<b>Front</b>	<b>2</b>
<b>2</b>	<b>OBI</b>	<b>3</b>
2.1	OBI . . . . .	3
2.1.1	Images . . . . .	3
2.1.2	Bias . . . . .	3
2.1.3	Parameters . . . . .	4
2.1.4	Events . . . . .	4
2.2	Compared Parameters . . . . .	5
2.3	Star Slots . . . . .	6
2.4	FID Slots . . . . .	6
<b>A</b>	<b>Summary</b>	<b>7</b>
A.1	Status . . . . .	7
A.2	Comments . . . . .	7

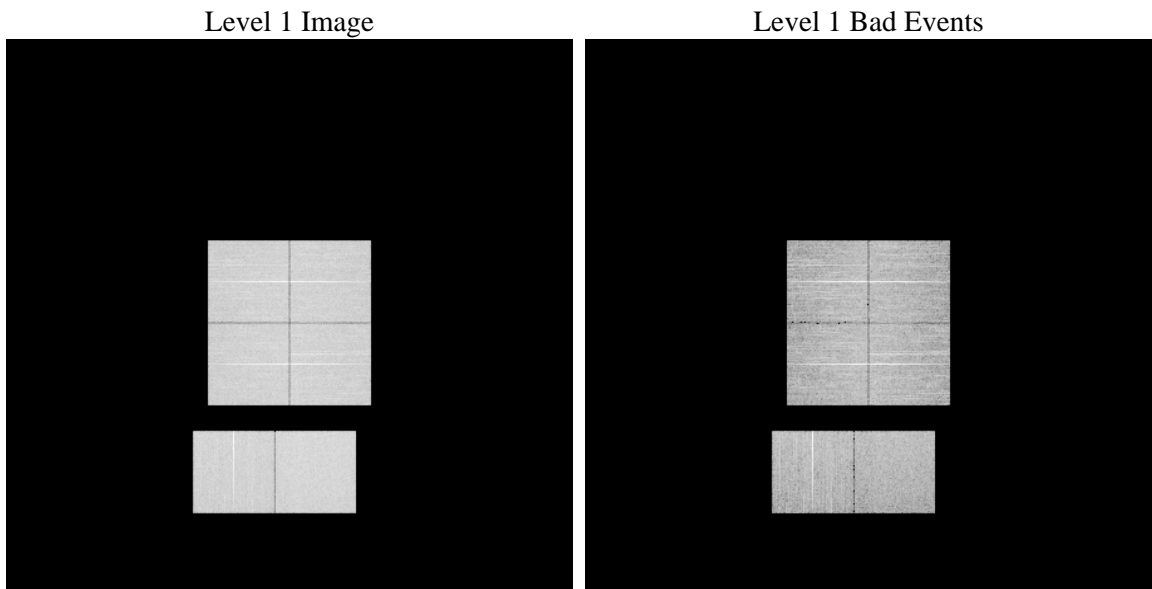
# 1 Front

seq_num	&#160	Sequence number
obs_id	58422	Observation id
title	ACIS-012367 diagnostics	Proposal title
observer	CHANDRA engineering request/realtime commanding	Principal investig
object	&#160	Source name
dtcycle	0	&#160
cycle	P	events from which exps? Prim/Second/Both
ra_targ	0.0	Observer's specified target RA [deg]
dec_targ	0.0	Observer's specified target Dec [deg]
ra_nom	184.00919532404	Nominal RA [deg]
dec_nom	-7.0272175102055	Nominal Dec [deg]
roll_nom	255.68788056098	Nominal Roll [deg]
revision	2	Processing version of data
ontime	8195.1999695301	Sum of GTIs [s]
livetime	8091.4274129589	Livetime [s]
ontime0	8195.1999695301	Sum of GTIs [s]
ontime1	8195.1999695301	Sum of GTIs [s]
ontime2	8195.1999695301	Sum of GTIs [s]
ontime3	8195.1999695301	Sum of GTIs [s]
ontime6	8195.1999695301	Sum of GTIs [s]
ontime7	8195.1999695301	Sum of GTIs [s]
l2events	730804	Number of level 2 events

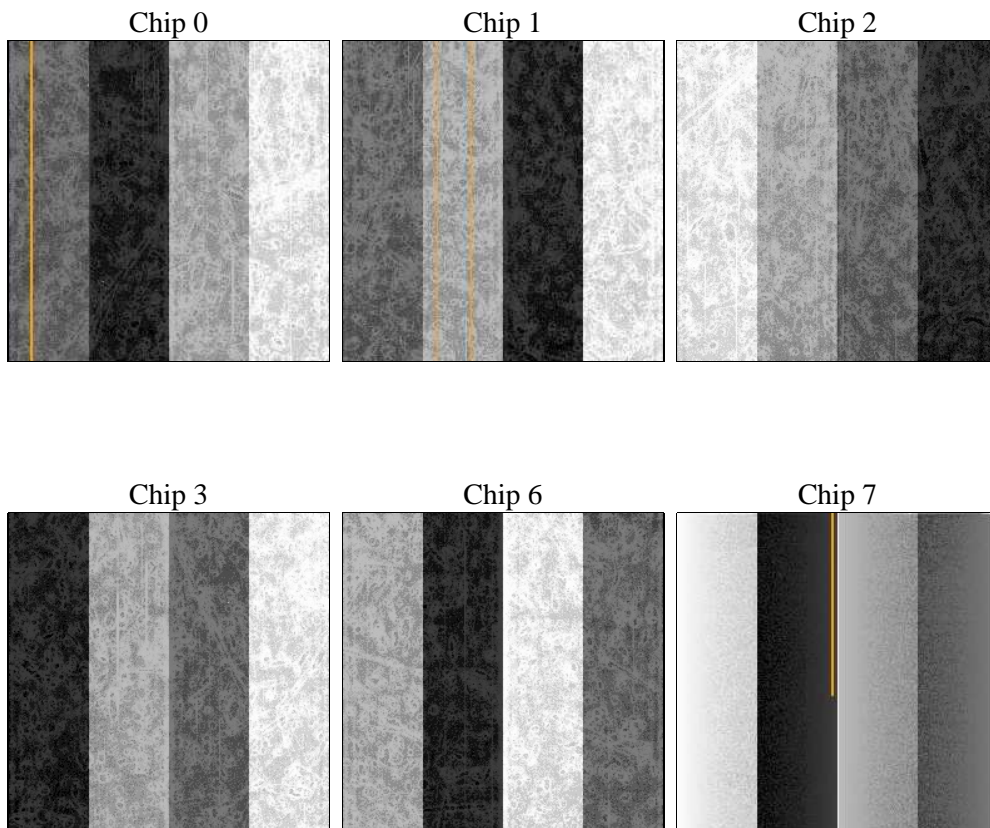
## 2 OBI

### 2.1 OBI

#### 2.1.1 Images



#### 2.1.2 Bias



### 2.1.3 Parameters

obi_num	0	Obi number	sched_exp_time	0.0	[s] Scheduled observation exposure time
ascdsver	8.4.4	Processing system revision	ontime	8195.1999695301	Sum of GTIs [s]
caldsver	4.4.9	&#160	ontime0	8195.1999695301	Sum of GTIs [s]
date	2012-04-23T22:28:22	Date and time of file creation	ontime1	8195.1999695301	Sum of GTIs [s]
revision	2	Processing version of data	ontime2	8195.1999695301	Sum of GTIs [s]
			ontime3	8195.1999695301	Sum of GTIs [s]
			ontime6	8195.1999695301	Sum of GTIs [s]
			ontime7	8195.1999695301	Sum of GTIs [s]
			l1events	1207946	Number of level 1 events

### 2.1.4 Events

	ccd 0	ccd 1	ccd 2	ccd 3	ccd 6	ccd 7		ccd 0	ccd 1	ccd 2	ccd 3	ccd 6	ccd 7
level 1 events	196061	192764	196742	199142	203016	220221	grade 0 events	66849	65405	68808	69307	66955	32151
rejected events	74325	70565	74914	76299	76198	65441		34%	33%	34%	34%	32%	14%
rejected %	37%	36%	38%	38%	37%	29%	grade 1 events	457	372	500	487	357	167
								0%	0%	0%	0%	0%	0%
							grade 2 events	21630	23324	19907	20390	23759	34848
								11%	12%	10%	10%	11%	15%
							grade 3 events	8071	7823	8383	8418	7836	14462
								4%	4%	4%	4%	3%	6%
							grade 4 events	7969	7729	8148	8338	7937	14081
								4%	4%	4%	4%	3%	6%
							grade 5 events	3669	3816	3477	4172	3960	10167
								1%	1%	1%	2%	1%	4%
							grade 6 events	18301	19048	17706	17497	21507	60630
								9%	9%	8%	8%	10%	27%
							grade 7 events	69115	65247	69813	70533	70705	53715
								35%	33%	35%	35%	34%	24%

## 2.2 Compared Parameters

Parameter	Planned	Actual
Instrument	ACIS	ACIS
Detector	ACIS-012367	ACIS-012367
Grating	NONE	NONE
Data mode	FAINT	FAINT
Observation mode	SECONDARY	SECONDARY
[deg] Pointing RA	0	184.0091953240382
[deg] Pointing Dec	0	-7.027217510205456
[deg] Pointing Roll	0.0	255.6878805609789
[mm] SIM focus pos	-0.782348	-0.7809083437167272
[mm] SIM defocus	0	0.7524282956875696
[mm] SIM translation stage pos	-233.592463	250.466033080201
[mm] SIM translation stage offset	0	-0.01005468664627074
[s] Observation start time (MET)	293832544.572544	293832543.54755
Observation start date	2007-04-24T20:09:05	2007-04-24T20:09:03
[s] Observation end time (MET)	293855662.423646	293855661.39866
Observation end date	2007-04-25T02:34:22	2007-04-25T02:34:21
Read mode	TIMED	TIMED

Parameter	Planned	Actual
Obspar format version number	7	7
Obspar file type	PREDICTED	ACTUAL
Obspar update status	NONE	UPDATED
On-chip summing requested	N	N
Subarray requested	NONE	NONE
Alternating exposures requested	N	N
[s] Primary exposure time	3.2	3.2

## 2.3 Star Slots

## 2.4 FID Slots

## A Summary

### A.1 Status

V&V Scientist	Jen Lauer
V&V Date (YYYY-MM-DD)	2012.04.24
V&V Edition	1
V&V Disposition and Status	OK
V&V Charge Time	8.1951999695301

### A.2 Comments