

# V&V Reference Report

## L2 ASCDS Version : 8.4.4

Observation 58354 - L2 Version 2  
Chandra X-Ray Center

L2 Processing Date : Apr 26 2012

## Contents

<b>1</b>	<b>Front</b>	<b>2</b>
<b>2</b>	<b>OBI</b>	<b>3</b>
2.1	OBI . . . . .	3
2.1.1	Images . . . . .	3
2.1.2	Bias . . . . .	3
2.1.3	Parameters . . . . .	4
2.1.4	Events . . . . .	4
2.2	Compared Parameters . . . . .	5
2.3	Star Slots . . . . .	6
2.4	FID Slots . . . . .	6
<b>A</b>	<b>Summary</b>	<b>7</b>
A.1	Status . . . . .	7
A.2	Comments . . . . .	7

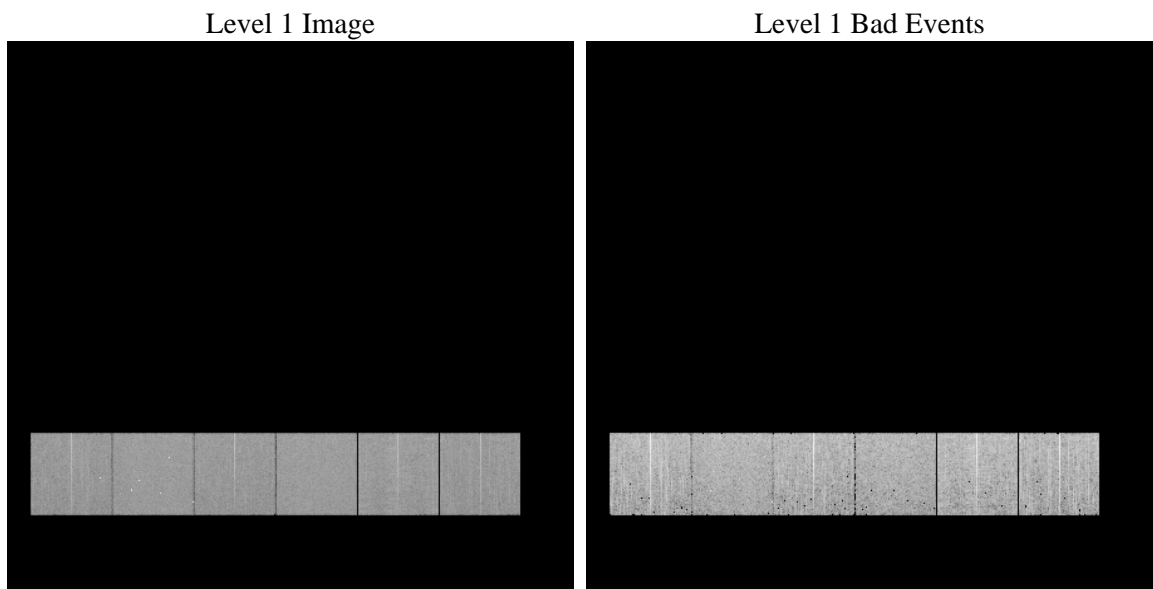
# 1 Front

seq_num	&#160	Sequence number
obs_id	58354	Observation id
title	ACIS-456789 diagnostics	Proposal title
observer	CHANDRA engineering request/realtime commanding	Principal investig
object	&#160	Source name
dtcycle	0	&#160
cycle	P	events from which exps? Prim/Second/Both
ra_targ	0.0	Observer's specified target RA [deg]
dec_targ	0.0	Observer's specified target Dec [deg]
ra_nom	291.97206305337	Nominal RA [deg]
dec_nom	-1.9932540767846	Nominal Dec [deg]
roll_nom	133.50638269673	Nominal Roll [deg]
revision	2	Processing version of data
ontime	5001.5999814272	Sum of GTIs [s]
livetime	4938.2667108604	Livetime [s]
ontime4	5001.5999814272	Sum of GTIs [s]
ontime5	5001.5999814272	Sum of GTIs [s]
ontime6	5001.5999814272	Sum of GTIs [s]
ontime7	5001.5999814272	Sum of GTIs [s]
ontime8	5001.5999814272	Sum of GTIs [s]
ontime9	5001.5999814272	Sum of GTIs [s]
l2events	454053	Number of level 2 events

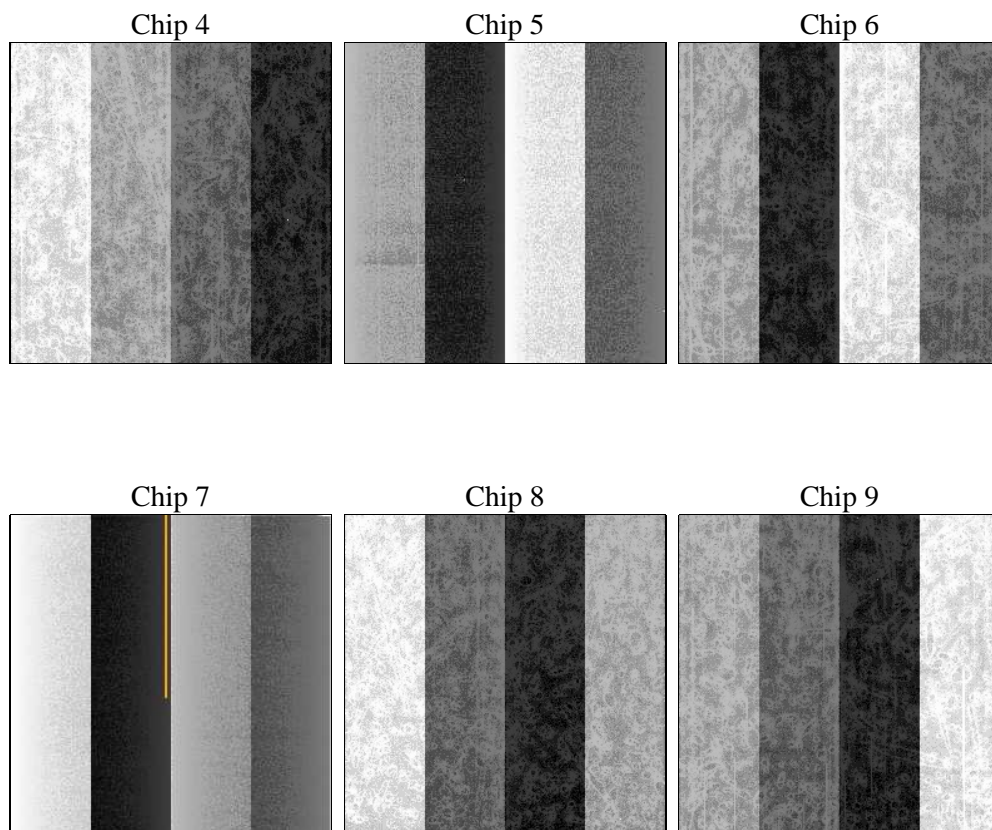
## 2 OBI

### 2.1 OBI

#### 2.1.1 Images



#### 2.1.2 Bias



### 2.1.3 Parameters

obi_num	1	Obi number	sched_exp_time	0.0	[s] Scheduled observation exposure time
ascdsver	8.4.4	Processing system revision	ontime	5001.5999814272	Sum of GTIs [s]
caldsver	4.4.9	&#160	ontime4	5001.5999814272	Sum of GTIs [s]
date	2012-04-26T14:07:13	Date and time of file creation	ontime5	5001.5999814272	Sum of GTIs [s]
revision	2	Processing version of data	ontime6	5001.5999814272	Sum of GTIs [s]
			ontime7	5001.5999814272	Sum of GTIs [s]
			ontime8	5001.5999814272	Sum of GTIs [s]
			ontime9	5001.5999814272	Sum of GTIs [s]
			l1events	766711	Number of level 1 events

### 2.1.4 Events

	ccd 4	ccd 5	ccd 6	ccd 7	ccd 8	ccd 9		ccd 4	ccd 5	ccd 6	ccd 7	ccd 8	ccd 9
level 1 events	121092	134239	121250	134009	134536	121585	grade 0 events	41550	17938	40537	20219	42974	39610
rejected events	49087	42152	45392	39439	51107	48338		34%	13%	33%	15%	31%	32%
rejected %	40%	31%	37%	29%	37%	39%	grade 1 events	414	220	251	91	290	282
								0%	0%	0%	0%	0%	0%
							grade 2 events	11401	32077	13425	20527	15123	12611
								9%	23%	11%	15%	11%	10%
							grade 3 events	4923	4855	4775	9166	5938	4848
								4%	3%	3%	6%	4%	3%
							grade 4 events	4847	4797	4895	9027	5679	4800
								4%	3%	4%	6%	4%	3%
							grade 5 events	2529	6144	2732	6704	3389	2925
								2%	4%	2%	5%	2%	2%
							grade 6 events	9329	32481	12277	35691	13777	11425
								7%	24%	10%	26%	10%	9%
							grade 7 events	46099	35727	42358	32584	47366	45084
								38%	26%	34%	24%	35%	37%

## 2.2 Compared Parameters

Parameter	Planned	Actual
Instrument	ACIS	ACIS
Detector	ACIS-456789	ACIS-456789
Grating	NONE	NONE
Data mode	FAINT	FAINT
Observation mode	SECONDARY	SECONDARY
[deg] Pointing RA	0	291.9720630533719
[deg] Pointing Dec	0	-1.993254076784632
[deg] Pointing Roll	0.0	133.506382696728
[mm] SIM focus pos	-0.684267	-0.7809083437167272
[mm] SIM defocus	0	0.7524282956875696
[mm] SIM translation stage pos	-190.132523	250.466033080201
[mm] SIM translation stage offset	0	-0.01005468664627074
[s] Observation start time (MET)	298594215.09999	298594214.075
Observation start date	2007-06-18T22:50:15	2007-06-18T22:50:14
[s] Observation end time (MET)	298609930.400741	298609929.37575
Observation end date	2007-06-19T03:12:10	2007-06-19T03:12:09
Read mode	TIMED	TIMED

Parameter	Planned	Actual
Obspar format version number	7	7
Obspar file type	PREDICTED	ACTUAL
Obspar update status	NONE	UPDATED
On-chip summing requested	N	N
Subarray requested	NONE	NONE
Alternating exposures requested	N	N
[s] Primary exposure time	3.2	3.2

## 2.3 Star Slots

## 2.4 FID Slots

## A Summary

### A.1 Status

V&V Scientist	Jen Lauer
V&V Date (YYYY-MM-DD)	2012.04.26
V&V Edition	1
V&V Disposition and Status	OK
V&V Charge Time	5.0015999814272

### A.2 Comments